



Prostaglandin E2 ELISA Kit

Catalog Number KA0326

96 assays

Version: 06

Intended for research use only

www.abnova.com

Table of Contents

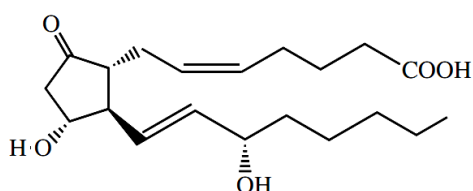
Introduction	3
Background	3
Principle of the Assay	3
General Information	4
Materials Supplied	4
Storage Instruction	4
Materials Required but Not Supplied	4
Precautions for Use	5
Assay Protocol	6
Reagent Preparation	6
Sample Preparation	6
Assay Procedure	7
Data Analysis.....	9
Calculation of Results.....	9
Performance Characteristics	11
Resources.....	13
References	13
Plate Layout	14

Introduction

Background

Prostaglandin E₂ is formed in a variety of cells from PGH₂, which itself is synthesized from arachidonic acid by the enzyme prostaglandin synthetase³⁻⁶. PGE₂ has been shown to have a number of biological actions, including vasodilation⁷, both anti- and proinflammatory action^{8,9}, modulation of sleep/wake cycles¹⁰, and facilitation of the replication of human immunodeficiency virus¹¹. It elevates cAMP levels¹² and stimulates bone resorption¹³, and has thermoregulatory effects. It has been shown to be a regulator of sodium excretion and renal hemodynamics¹⁴.

Prostaglandin E₂



Principle of the Assay

The Prostaglandin E₂ ELISA Kit is a competitive immunoassay for the quantitative determination of Prostaglandin E₂ in biological fluids. Please read the complete kit insert before performing this assay. The kit uses a monoclonal antibody to PGE₂ to bind, in a competitive manner, the PGE₂ in the sample or an alkaline phosphatase molecule which has PGE₂ covalently attached to it. After a simultaneous incubation at 4°C the excess reagents are washed away and substrate is added. After incubation at 37°C, the enzyme reaction is stopped and the yellow color generated is read on a microplate reader at 405 nm. The intensity of the bound yellow color is inversely proportional to the concentration of PGE₂ in either standards or samples. The measured optical density is used to calculate the concentration of PGE₂. For further explanation of the principles and practice of immunoassays please see the excellent books by Chard¹ or Tijssen².

General Information

Materials Supplied

List of component

Component	State	Amount
Goat anti-Mouse IgG Microtiter Plate	A plate using break-apart strips coated with goat antibody specific to mouse IgG.	96 wells/plate
PGE ₂ ELISA Conjugate	A blue solution alkaline phosphatase conjugated with PGE ₂ .	6 mL
PGE ₂ HS-ELISA Antibody	A yellow solution of a monoclonal antibody to PGE ₂ .	6 mL
Assay Buffer	Tris buffered saline containing proteins and sodium azide as preservative.	30 mL
Wash Buffer Concentrate	Tris buffered saline containing detergents.	30 mL
Prostaglandin E ₂ Standard	A solution of 50,000 pg/mL PGE ₂ .	0.5 mL
pNpp Substrate	A solution of p-nitrophenyl phosphate in buffer. Ready to use.	20 mL
Stop Solution	A solution of trisodium phosphate in water. Keep tightly capped. Caution: Caustic.	5 mL
Plate Sealers	-	2 slices

Storage Instruction

All components of this kit, except the Conjugate and Standard, are stable at 4°C until the kit's expiration date. The Conjugate and Standard must be stored at -20°C.

Materials Required but Not Supplied

- ✓ Deionized or distilled water.
- ✓ Precision pipets for volumes between 5 µL and 1,000 µL.
- ✓ Repeater pipets for dispensing 50 µL and 200 µL.
- ✓ Disposable beakers for diluting buffer concentrates.
- ✓ Graduated cylinders.
- ✓ A 37°C Incubator.
- ✓ Adsorbent paper for blotting.
- ✓ Microplate reader capable of reading at 405 nm, preferably with correction between 570 and 590 nm.

Precautions for Use

- Precautions
FOR RESEARCH USE ONLY. NOT FOR USE IN DIAGNOSTIC PROCEDURES.
- ✓ Some kit components contain azide, which may react with lead or copper plumbing. When disposing of reagents always flush with large volumes of water to prevent azide build-up.
- ✓ Stop Solution is a solution of trisodium phosphate. This solution is caustic; care should be taken in use.
- ✓ The activity of the alkaline phosphatase conjugate is dependent on the presence of Mg^{2+} and Zn^{2+} ions. The activity of the conjugate is affected by concentrations of chelators (>10 mM) such as EDTA and EGTA.
- ✓ We test this kit's performance with a variety of samples; however it is possible that high levels of interfering substances may cause variation in assay results.
- ✓ The Prostaglandin E_2 Standard provided is supplied in ethanolic buffer at a pH optimized to maintain PGE_2 integrity. Care should be taken handling this material because of the known and unknown effects of prostaglandins

- Procedural Notes:
 - ✓ Do not mix components from different kit lots or use reagent beyond the kit expiration date.
 - ✓ Allow all reagents to warm to room temperature for at least 30 minutes before opening.
 - ✓ Standards can be made up in either glass or plastic tubes.
 - ✓ Pre-rinse the pipet tip with the reagent, use fresh pipet tips for each sample, standard and reagent.
 - ✓ Pipet standards and samples to the bottom of the wells.
 - ✓ Add the reagents to the side of the well to avoid contamination.
 - ✓ This kit uses break-apart microtiter strips, which allow the user to measure as many samples as desired. Unused wells must be kept desiccated at 4°C in the sealed bag provided. The wells should be used in the frame provided.
 - ✓ Care must be taken to minimize contamination by endogenous alkaline phosphatase. Contamination alkaline phosphatase activity, especially in the substrate solution may lead to high blanks. Care should be taken not to touch pipet tips and other items that are used in the assay with bare hands.
 - ✓ Prior to addition of substrate, ensure that there is no residual wash buffer in the wells. Any remaining wash buffer may cause variation in assay results.

Assay Protocol

Reagent Preparation

- PGE₂ Standard

Allow the 50,000 pg/mL PGE₂ standard solution to warm to room temperature. Label eight 12 x 75 mm glass tubes #1 through #8. Pipet 1 mL of standard diluent (Assay Buffer or Tissue Culture Media) into tube #1. Pipet 500 µL of diluent into tubes #2 through #8. Remove 20 µL of diluent from tube #1.

Add 20 µL of the 50,000 pg/mL standard to tube #1. Vortex thoroughly. Add 500 µL of tube #1 to tube #2 and vortex thoroughly. Add 500 µL of tube #2 to tube #3 and vortex. Continue this for tubes #4 through #8.

The concentration of PGE₂ in tubes #1 through #8 will be 1,000, 500, 250, 125, 62.5, 31.25, 15.63, and 7.81 pg/mL, respectively. See Plate Layout and tables below for dilution details. Diluted standards should be used within 60 minutes of preparation.

Std.	Assay Buffer Vol. (µL)	Vol. Added (µL)	PGE ₂ Conc. (pg/mL)
1	980	20, Stock	1,000
2	500	500, Std. 1	500
3	500	500, Std. 2	250
4	500	500, Std. 3	125
5	500	500, Std. 4	62.5
6	500	500, Std. 5	31.25
7	500	500, Std. 6	15.63
8	500	500, Std. 7	7.81

- PGE₂ Conjugate

Allow the conjugate to warm to room temperature. Any unused conjugate should be aliquot and re-frozen at or below -20°C

- Wash Buffer

Prepare the Wash Buffer by diluting 5 mL of the supplied concentrate with 95 mL of deionized water. This can be stored at room temperature until the kit expiration date, or for 3 months, whichever is earlier.

Sample Preparation

- Sample Handling

The Prostaglandin E2 ELISA Kit is compatible with PGE₂ samples in a wide range of matrices after dilution in Assay Buffer. Please refer to the Sample Recovery recommendations for details of suggested dilutions. However, the end user must verify that the recommended dilutions are appropriate for their samples. Samples containing mouse IgG may interfere with the assay.

Samples in the majority of tissue culture media, including those containing fetal bovine serum, can also be read in the assay, provided the standards have been diluted into the tissue culture media instead of Assay Buffer. There will be a small change in binding associated with running the standards and samples in media. Users should only use standard curves generated in media or buffer to calculate concentrations of PGE₂ in the appropriate matrix. For tissue, urine and plasma samples, prostaglandin synthetase inhibitors such as indomethacin or meclofenamic acid at concentrations up to 10 µg/mL should be added to either the tissue homogenate or urine and plasma samples.

Some samples normally have very low levels of PGE₂ present and extraction may be necessary for accurate measurement. A suitable extraction procedure is outlined below:

- Materials Needed
 - ✓ PGE₂ Standard to allow extraction efficiency to be accurately determined
 - ✓ 2 M hydrochloric acid, deionized water, ethanol, hexane and ethyl acetate
 - ✓ 200 mg C₁₈ Reverse Phase Extraction Columns.
- Preparation procedure
 1. Acidify the plasma, urine or tissue homogenate by addition of 2 M HCl to pH of 3.5. Approximately 50 µL of HCl will be needed per mL of plasma. Allow to sit at 4°C for 15 minutes. Centrifuge samples in a microcentrifuge for 2 minutes to remove any precipitate.
 2. Prepare the C₁₈ reverse phase column by washing with 10 mL of ethanol followed by 10 mL of deionized water.
 3. Apply the sample under a slight positive pressure to obtain a flow rate of about 0.5 mL/minute. Wash the column with 10 mL of water, followed by 10 mL of 15% ethanol, and finally 10 mL hexane. Elute the sample from the column by addition of 10 mL ethyl acetate.
 4. If analysis is to be carried out immediately, evaporate samples under a stream of nitrogen. Add at least 250 µL of Assay Buffer to the dried samples. Vortex well then let sit for five minutes at room temperature. Repeat twice more. If analysis is to be delayed, store samples as the eluted ethyl acetate solutions at -80°C until the immunoassay is to be run.

Note: Please refer to references 15-18 for details of extraction protocols.

Assay Procedure

Bring all reagents to room temperature for at least 30 minutes prior to opening.

All standards and samples should be run in duplicate.

1. Refer to the Plate Layout to determine the number of wells to be used and return any remaining wells with the desiccant back into the pouch and seal the ziploc. Store unused wells at 4°C.
2. Pipet 100 µL of standard diluent (Assay Buffer or Tissue Culture Media) into the NSB and the Bo (0 pg/mL Standard) wells.
3. Pipet 100 µL of Standards #1 through #8 into the appropriate wells.

4. Pipet 100 μ L of the Samples into the appropriate wells.
5. Pipet 50 μ L of Assay Buffer into the NSB wells.
6. Pipet 50 μ L of blue Conjugate into each well, except the Total Activity (TA) and Blank wells.
7. Pipet 50 μ L of yellow Antibody into each well, except the Blank, TA and NSB wells.
NOTE: Every well used should be Green in color except the NSB wells which should be Blue. The Blank and TA wells are empty at this point and have no color.
8. Incubate the plate overnight (18-24 hours) at 4°C. The plate should be covered with the plate sealer provided.
9. Empty the contents of the wells and wash by adding 400 μ L of wash solution to every well. Repeat the wash 2 more times for a total of 3 Washes.
10. After the final wash, empty or aspirate the wells, and firmly tap the plate on a lint free paper towel to remove any remaining wash buffer.
11. Add 5 μ L of the blue Conjugate to the TA wells.
12. Add 200 μ L of the pNpp Substrate solution to every well. Incubate at 37°C for 1 hour without shaking. The plate should be covered with the provided plate sealer.
13. Add 50 μ L of Stop Solution to every well. This stops the reaction and the plate should be read immediately.
14. Blank the plate reader against the Blank wells, read the optical density at 405 nm, preferably with correction between 570 and 590 nm. If the plate reader is not able to be blanked against the Blank wells, manually subtract the mean optical density of the Blank wells from all readings.

- Short protocol

Well I.D.	Blank A1, B1	TA C1, D1	NSB E1, F1	B0 G1, H1	Stds. A2-H3	Samples A4-H12
Standard Diluent	---	---	100 μ L	100 μ L	---	---
Assay Buffer	---	---	50 μ L	---	---	---
Std. and/or Sample	---	---	---	---	100 μ L	100 μ L
Conjugate	---	---	50 μ L	50 μ L	50 μ L	50 μ L
Antibody	---	---	---	50 μ L	50 μ L	50 μ L
Incub. 18-24 hrs at 4°C, sealed	→	→	→	→	→	→
Asp. & Wash 3 x 400 μ L	→	→	→	→	→	→
Conjugate	---	5 μ L	---	---	---	---
Substrate	200 μ L	200 μ L	200 μ L	200 μ L	200 μ L	200 μ L
Incub. 1 hour at 37°C, sealed	→	→	→	→	→	→
Stop Solution	50 μ L	50 μ L	50 μ L	50 μ L	50 μ L	50 μ L

Data Analysis

Calculation of Results

Several options are available for the calculation of the concentration of PGE₂ in the samples. We recommend that the data be handled by an immunoassay software package utilizing a 4 parameter logistic curve fitting program. If data reduction software is not readily available, the concentration of PGE₂ can be calculated as follows:

- Calculate the average net Optical Density (OD) bound for each standard and sample by subtracting the average NSB OD from the average OD bound:
Average Net OD = Average Bound OD - Average NSB OD
- Calculate the binding of each pair of standard wells as a percentage of the maximum binding wells (Bo), using the following formula:
Percent Bound = Net OD/ Net Bo OD x 100
- Plot Percent Bound versus Concentration of PGE₂ for the standards. Approximate a straight line through the points. The concentration of PGE₂ in the unknowns can be determined by interpolation.

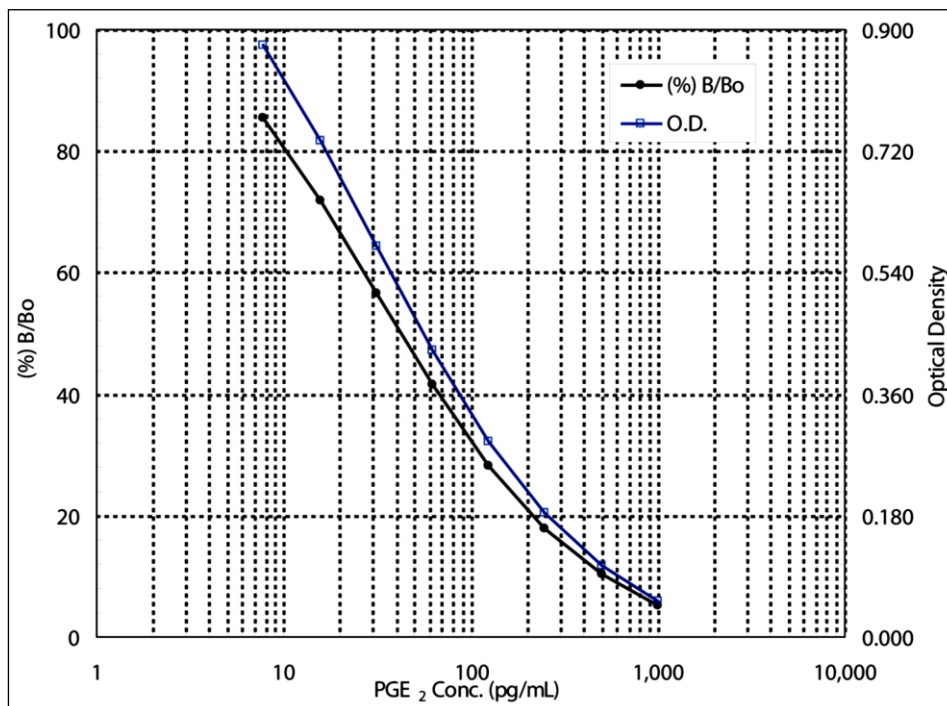
- Typical Results

The results shown below are for illustration only and should not be used to calculate results.

Sample	Mean OD(-Blank)	Average Net OD	Percent Bound	PGE ₂ (pg/mL)
Blank OD	(0.105)			
TA	2.406	2.301		
NSB	0.104	0.000	0.00%	
Bo	1.125	1.020	100%	0
S1	0.166	0.061	6.0%	1,000
S2	0.214	0.109	10.7%	500
S3	0.269	0.164	16.1%	250
S4	0.378	0.273	26.8%	125
S5	0.567	0.462	45.3%	62.5
S6	0.684	0.579	56.8%	31.25
S7	0.811	0.706	69.2%	15.63
S8	0.994	0.889	87.2%	7.81
Unknown 1	0.283	0.178	17.5%	260
Unknown 2	0.489	0.384	37.7%	76

- **Typical Standard Curve**

A typical standard curve is shown below. This curve must not be used to calculate PGE₂ concentrations; each user must run a standard curve for each assay.



- **Typical Quality Control Parameters**

Total Activity Added	=	2.406 x 10 = 24.06
%NSB	=	0.0%
%Bo/TA	=	4.2%
Quality of Fit	=	1.0 (Calculated from 4 parameter logistic curve fit)
20% Intercept	=	215 pg/mL
50% Intercept	=	42 pg/mL
80% Intercept	=	11 pg/mL

Performance Characteristics

The following parameters for this kit were determined using the guidelines listed in the National Committee for Clinical Laboratory Standards (NCCLS) Evaluation Protocols¹⁹.

- Sensitivity

Sensitivity was calculated by determining the average optical density bound for sixteen (16) wells run as Bo, and comparing to the average optical density for sixteen (16) wells run with Standard #8. The detection limit was determined as the concentration of PGE₂ measured at two (2) standard deviations from the zero along the standard curve. The value was determined to be 8.26 pg/mL.

- Linearity

A sample containing 200 pg/mL PGE₂ was diluted 4 times 1:2 in the kit Assay Buffer and measured in the assay. The data was plotted graphically as actual PGE₂ concentration versus measured PGE₂ concentration. The line obtained had a slope of 1.069 and a correlation coefficient of 1.000.

- Precision

Intra-assay precision was determined by taking samples containing low, medium and high concentrations of PGE₂ and running these samples multiple times (n=24) in the same assay. Inter-assay precision was determined by measuring three samples with low, medium and high concentrations of PGE₂ in multiple assays (n=8).

The precision numbers listed below represent the percent coefficient of variation for the concentrations of PGE₂ determined in these assays as calculated by a 4 parameter logistic curve fitting program.

	PGE ₂ (pg/mL)	Intra-assay %CV	Inter-assay %CV
Low	19	9.8	
Medium	56	6.1	
High	110	3.1	
Low	17		12.1
Medium	51		12.6
High	98		8.1

- Cross reactivity

The cross reactivities for a number of related eicosanoid compounds was determined by dissolving the cross reactant (purity checked by N.M.R. and other analytical methods) in Assay Buffer at concentrations from 500,000 to 39 pg/mL. These samples were then measured in the PGE₂ assay, and the measured PGE₂ concentration at 50% B/Bo calculated. The % cross reactivity was calculated by comparison with the actual concentration of cross reactant in the sample and expressed as a percentage.

Compound	Cross Reactivity
PGE ₂	100%
PGE ₁	70%
PGE ₃	16.3%
PGF _{1α}	1.4%
PGF _{2α}	0.7%
6-keto-PGF _{1α}	0.6%
PGA ₂	0.1%
PGB ₁	0.1%
13,14-dihydro-15-keto-PGF _{2α}	<0.1%
6,15-keto-13,14-dihydro-PGF _{1α}	<0.1%
Thromboxane B ₂	<0.1%
2-Arachidonoylglycerol	<0.1%
Anandamide	<0.1%
PGD ₂	<0.1%
Arachadonic Acid	<0.1%

- Sample Recoveries

Please refer to Sample Handling recommendations and Standard Preparation. PGE₂ concentrations were measured in a variety of different samples including tissue culture media, human saliva, serum, and urine. PGE₂ was spiked into the undiluted samples of these media which were then diluted with the appropriate diluent and assayed in the kit. The following results were obtained:

Sample	% Recovery*	Recommended Dilution*
Tissue Culture Media	104.4	None
Human Saliva	123.3	1:10
Human Urine	108.9	1:10
Human Male Serum	126.1	1:10
Human Female Serum	113.7	1:10
Human Whole Blood	101.2	1:10

*See Sample Handling instruction for details.

Resources

References

1. T. Chard, "An Introduction to Radioimmunoassay & Related Techniques 4th Ed.", (1990) Amsterdam: Elsevier.
2. P. Tijssen, "Practice & Theory of Enzyme Immunoassays", (1985) Amsterdam: Elsevier.
3. P.W. Ramwell, Biol. Reprod., (1977) 16: 70.
4. R.J. Flower & G.J. Blackwell, Biochem. Pharm., (1976) 25: 285.
5. S. Moncada & J.R. Vane, Pharm. Rev., (1979) 30: 293.
6. B. Samuelsson, et al., Ann. Rev Biochem., (1978) 47: 997.
7. P.D.I. Richardson, et al., Brit. J. Pharmacol., (1976) 57: 581.
8. J. Raud, et al., Proc. Natl. Acad. Sci., USA, (1988) 85: 2315.
9. J.W. Christman, et al., Prostaglandins, (1991) 41: 251.
10. O. Hayaishi, J. Biol. Chem., (1988) 263: 14593.
11. S. Kuno, et al., Proc. Natl. Acad. Sci., USA, (1986) 83: 3487.
12. D.L. Bareis, et al., Proc. Natl. Acad. Sci., USA, (1983) 80: 2514.
13. L.G. Raisz, et al., Nature, (1977) 267: 532.
14. C.R. Long, et al., Prostaglandins, (1990) 40: 591.
15. K. Green, et al., Anal. Biochem, (1973) 54: 434.
16. J. Frolich, et al., J. Clin. Invest., (1975) 55: 763.
17. J.E. Shaw & P.W. Ramwell, Meth. Biochem. Anal., (1969) 17: 325.
18. K. Green, et al., Adv. Prostaglandin & Thromboxane Res., (1978) 5: 15.
19. National Committee for Clinical Laboratory Standards Evaluation Protocols, SC1, (1989) Villanova, PA: NCCLS.

Plate Layout

	1	2	3	4	5	6	7	8	9	10	11	12
A	Blank	Std 1	Std 5									
B	Blank	Std 1	Std 5									
C	TA	Std 2	Std 6									
D	TA	Std 2	Std 6									
E	NSB	Std 3	Std 7									
F	NSB	Std 3	Std 7									
G	Bo	Std 4	Std 8									
H	Bo	Std 4	Std 8									