

Product Datasheet

Human Serum Albumin Antibody (3B8-H3-G1) - Chimeric - BSA Free NBP3-52356-100ul

Unit Size: 100 ul

Store at 4C short term. Aliquot and store at -20C long term. Avoid freeze-thaw cycles.

www.novusbio.com



technical@novusbio.com

Protocols, Publications, Related Products, Reviews, Research Tools and Images at:
www.novusbio.com/NBP3-52356

Updated 6/11/2026 v.20.1

Earn rewards for product
reviews and publications.

Submit a publication at www.novusbio.com/publications

Submit a review at www.novusbio.com/reviews/destination/NBP3-52356



NBP3-52356-100ul

Human Serum Albumin Antibody (3B8-H3-G1) - Chimeric - BSA Free

Product Information	
Unit Size	100 ul
Concentration	1 mg/ml
Storage	Store at 4C short term. Aliquot and store at -20C long term. Avoid freeze-thaw cycles.
Clonality	Monoclonal
Clone	3B8-H3-G1
Preservative	0.05% Sodium Azide
Isotype	IgY
Purity	Affinity purified
Buffer	1X PBS (pH 7.4)
Target Molecular Weight	66 kDa

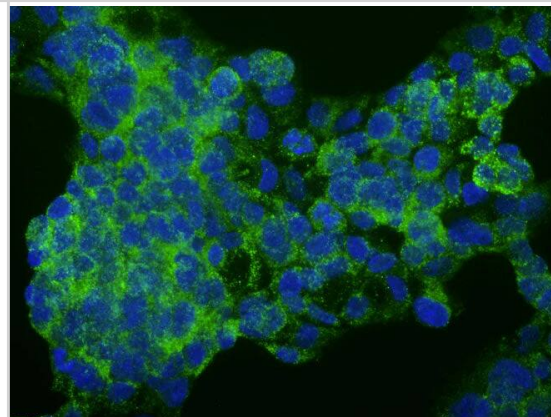
Product Description	
Description	This recombinant antibody is a chimeric antibody created by replacing the mouse heavy and light constant regions of clone 3B8-H3-G1 with chicken IgY heavy and light constant regions. As such this antibody retains the same binding performance as the original clone 3B8-H3-G1 but can be detected using standard anti-chicken secondary antibodies allowing flexibility for multiplexing applications. This antibody is expressed recombinantly in HEK293 cells and then affinity purified from the cell culture media.
Host	Chicken
Gene ID	213
Gene Symbol	ALB
Species	Human
Immunogen	Human Serum Albumin

Product Application Details	
Applications	Western Blot, ELISA, Immunocytochemistry/ Immunofluorescence, Immunohistochemistry
Recommended Dilutions	Western Blot 1:1000-1:3000, ELISA, Immunohistochemistry 1:100, Immunocytochemistry/ Immunofluorescence 1:100

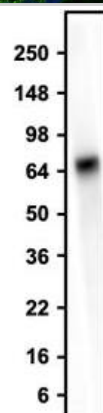


Images

Immunofluorescent staining of HepG2 cells using NBP3-52356 (green). DAPI nuclear stain (blue) shows cell nuclei. This antibody specifically stains the endogenous Human Serum Albumin protein in the cytoplasm of HepG2 cells.



Western blotting of 2 μ L human serum with NBP3-52356, detected with anti-chicken-HRP. This antibody recognizes endogenous albumin protein in human serum at ~66 kDa.





Novus Biologicals USA

10730 E. Briarwood Avenue
Centennial, CO 80112
USA
Phone: 303.730.1950
Toll Free: 1.888.506.6887
Fax: 303.730.1966
nb-customerservice@bio-techne.com

Bio-Techne Canada

21 Canmotor Ave
Toronto, ON M8Z 4E6
Canada
Phone: 905.827.6400
Toll Free: 855.668.8722
Fax: 905.827.6402
canada.inquires@bio-techne.com

Bio-Techne Ltd

19 Barton Lane
Abingdon Science Park
Abingdon, OX14 3NB, United Kingdom
Phone: (44) (0) 1235 529449
Free Phone: 0800 37 34 15
Fax: (44) (0) 1235 533420
info.EMEA@bio-techne.com

General Contact Information

www.novusbio.com
Technical Support: nb-technical@bio-techne.com
Orders: nb-customerservice@bio-techne.com
General: novus@novusbio.com

Products Related to NBP3-52356-100ul

BAF010	Goat anti-Chicken IgY Secondary Antibody [Biotin]
NB7276	Goat anti-Chicken IgM Heavy Chain Secondary Antibody
NBP1-97049-5mg	Human Serum Albumin Native Protein
210-TA-005	TNF-alpha [Unconjugated]

Limitations

This product is for research use only and is not approved for use in humans or in clinical diagnosis. Primary Antibodies are guaranteed for 1 year from date of receipt.

For more information on our 100% guarantee, please visit www.novusbio.com/guarantee

Earn gift cards/discounts by submitting a review: www.novusbio.com/reviews/submit/NBP3-52356

Earn gift cards/discounts by submitting a publication using this product:
www.novusbio.com/publications

