

Product Datasheet

Laminin beta 3 Antibody (CL3353)

NBP3-52063-100ul

Unit Size: 100 ul

Store at 4C short term. Aliquot and store at -20C long term. Avoid freeze-thaw cycles.

www.novusbio.com



technical@novusbio.com

Protocols, Publications, Related Products, Reviews, Research Tools and Images at:
www.novusbio.com/NBP3-52063

Updated 6/10/2026 v.20.1

Earn rewards for product reviews and publications.

Submit a publication at www.novusbio.com/publications

Submit a review at www.novusbio.com/reviews/destination/NBP3-52063



NBP3-52063-100ul

Laminin beta 3 Antibody (CL3353)

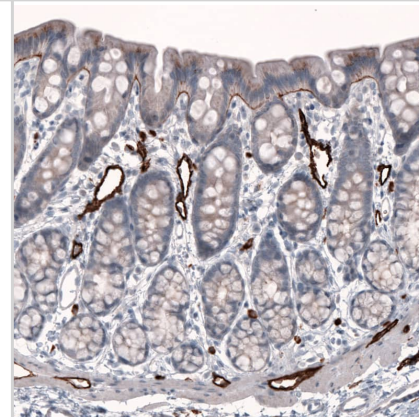
| Product Information | |
|---------------------|--|
| Unit Size | 100 ul |
| Concentration | 1 mg/ml |
| Storage | Store at 4C short term. Aliquot and store at -20C long term. Avoid freeze-thaw cycles. |
| Clonality | Monoclonal |
| Clone | CL3353 |
| Preservative | 0.02% Sodium Azide |
| Isotype | IgG1 |
| Purity | Protein A purified |
| Buffer | PBS, pH 7.2, 40% glycerol |

| Product Description | |
|---------------------|---|
| Host | Mouse |
| Gene ID | 3914 |
| Gene Symbol | LAMB3 |
| Species | Human, Rat |
| Immunogen | This antibody was developed using a recombinant protein derived from Q13751, with the exact immunogen sequence remaining proprietary. |

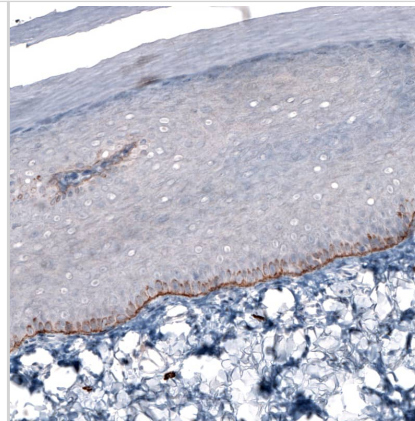
| Product Application Details | |
|-----------------------------|---|
| Applications | Western Blot, Immunohistochemistry-Paraffin, Immunocytochemistry/Immunofluorescence, Immunohistochemistry |
| Recommended Dilutions | Western Blot 1 ug/ml, Immunohistochemistry 1:200-1:500, Immunocytochemistry/ Immunofluorescence 2-10 ug/ml, Immunohistochemistry-Paraffin 1:200-1:500 |
| Application Notes | For IHC-Paraffin, HIER pH 6 retrieval is recommended. ICC/IF Fixation Permeabilization: Use PFA/Triton X-100. |

Images

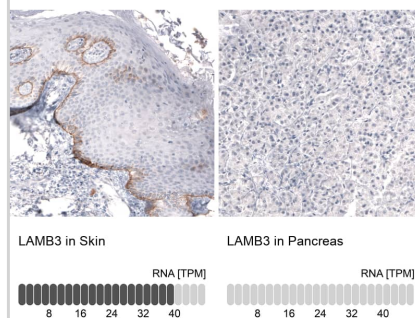
Staining of rat rectum shows moderate positivity in basement membrane of glandular cells, as well as strong positivity in endothelial cells.



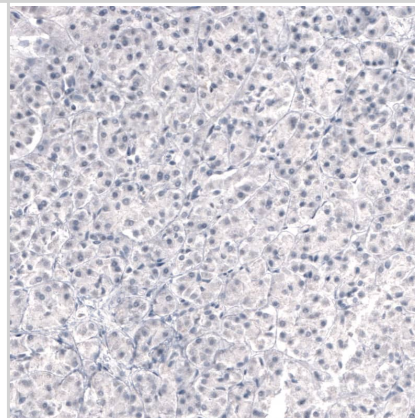
Staining of rat skin shows moderate to strong positivity in basement membrane basal epidermal cells.



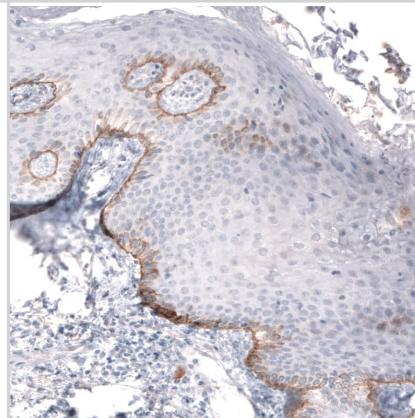
Analysis in human skin and pancreas tissues. Corresponding Laminin beta 3 RNA-seq data are presented for the same tissues.



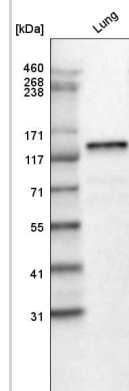
Staining of human pancreas shows no positivity in glandular cells as expected.



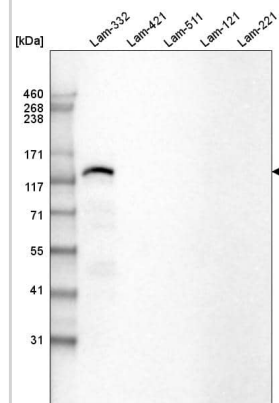
Staining of human skin shows moderate positivity in the basement membrane of the basal layer of epidermal cells.



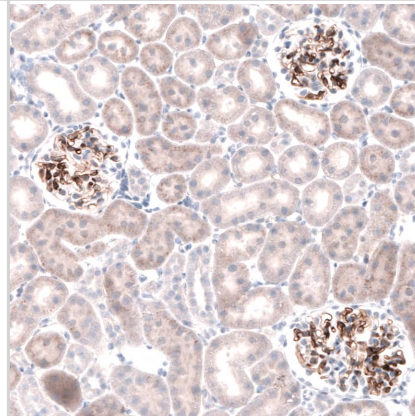
Analysis in human lung tissue.



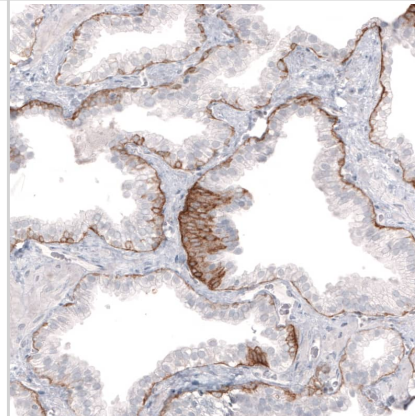
Analysis of purified human recombinant Laminin-332, Laminin-421, Laminin-511, Laminin-121 and Laminin-221.



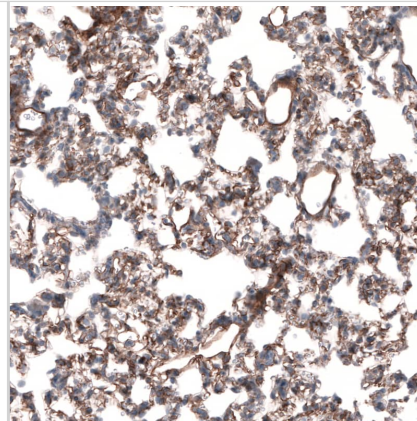
Staining of rat kidney shows strong positivity in basement membrane in cells in glomeruli.



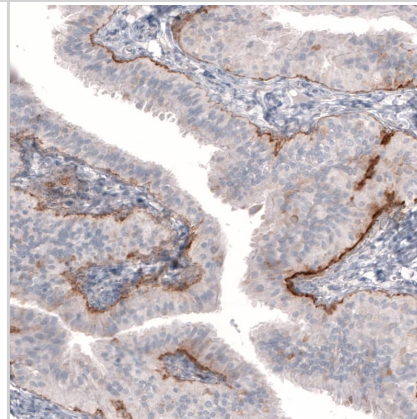
Staining of human prostate shows moderate to strong positivity in basement membrane of glandular cells.



Staining of rat lung shows moderate to strong positivity in basement membrane of pneumocytes.



Staining of human fallopian tube shows moderate to strong positivity in basement membrane of glandular cells.





Novus Biologicals USA

10730 E. Briarwood Avenue
Centennial, CO 80112
USA
Phone: 303.730.1950
Toll Free: 1.888.506.6887
Fax: 303.730.1966
nb-customerservice@bio-techne.com

Bio-Techne Canada

21 Canmotor Ave
Toronto, ON M8Z 4E6
Canada
Phone: 905.827.6400
Toll Free: 855.668.8722
Fax: 905.827.6402
canada.inquires@bio-techne.com

Bio-Techne Ltd

19 Barton Lane
Abingdon Science Park
Abingdon, OX14 3NB, United Kingdom
Phone: (44) (0) 1235 529449
Free Phone: 0800 37 34 15
Fax: (44) (0) 1235 533420
info.EMEA@bio-techne.com

General Contact Information

www.novusbio.com
Technical Support: nb-technical@bio-techne.com
Orders: nb-customerservice@bio-techne.com
General: novus@novusbio.com

Products Related to NBP3-52063-100ul

| | |
|--------------------|---|
| HAF007 | Goat anti-Mouse IgG Secondary Antibody [HRP] |
| NB7539 | Goat anti-Mouse IgG (H+L) Secondary Antibody [HRP] |
| NBP1-97005-0.5mg | Mouse IgG1 Isotype Control (MG1) |
| H00003914-Q01-10ug | Recombinant Human Laminin beta 3 GST (N-Term) Protein |

Limitations

This product is for research use only and is not approved for use in humans or in clinical diagnosis. Primary Antibodies are guaranteed for 1 year from date of receipt.

For more information on our 100% guarantee, please visit www.novusbio.com/guarantee

Earn gift cards/discounts by submitting a review: www.novusbio.com/reviews/submit/NBP3-52063

Earn gift cards/discounts by submitting a publication using this product:
www.novusbio.com/publications

