

Product Datasheet

Muscarinic Acetylcholine Receptor M1/CHRM1 Antibody (HL3933) NBP3-48854

Unit Size: 100 ul

Store at 4C short term. Aliquot and store at -20C long term. Avoid freeze-thaw cycles.

www.novusbio.com



technical@novusbio.com

Protocols, Publications, Related Products, Reviews, Research Tools and Images at:
www.novusbio.com/NBP3-48854

Updated 9/9/2025 v.20.1

Earn rewards for product
reviews and publications.

Submit a publication at www.novusbio.com/publications

Submit a review at www.novusbio.com/reviews/destination/NBP3-48854



NBP3-48854**Muscarinic Acetylcholine Receptor M1/CHRM1 Antibody (HL3933)**

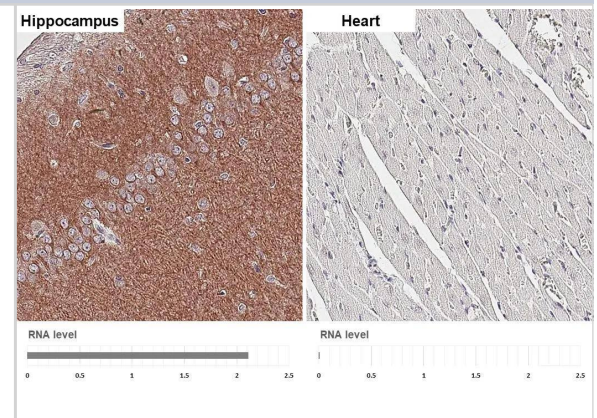
Product Information	
Unit Size	100 ul
Concentration	Concentrations vary lot to lot. See vial label for concentration. If unlisted please contact technical services.
Storage	Store at 4C short term. Aliquot and store at -20C long term. Avoid freeze-thaw cycles.
Clonality	Monoclonal
Clone	HL3933
Preservative	No Preservative
Isotype	IgG
Purity	Protein A purified
Buffer	PBS

Product Description	
Description	Novus Biologicals Rabbit Muscarinic Acetylcholine Receptor M1/CHRM1 Antibody (HL3933) (NBP3-48854) is a recombinant monoclonal antibody validated for use in WB. All Novus Biologicals antibodies are covered by our 100% guarantee.
Host	Rabbit
Gene ID	1128
Gene Symbol	CHRM1
Species	Mouse, Rat
Immunogen	Synthetic peptide encompassing a sequence within the Intracellular domain of human Muscarinic Acetylcholine Receptor M1/CHRM1. The exact sequence is proprietary.

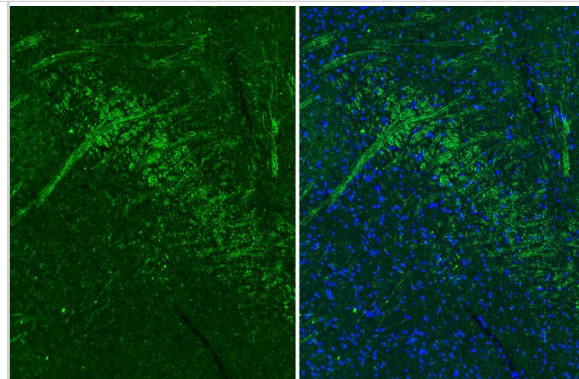
Product Application Details	
Applications	Western Blot
Recommended Dilutions	Western Blot

Images

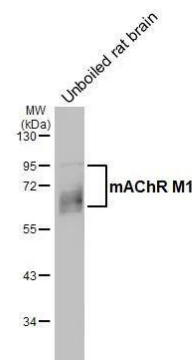
Muscarinic Acetylcholine Receptor M1/CHRM1 antibody [HL3933] detects Muscarinic Acetylcholine Receptor M1/CHRM1 protein by immunohistochemical analysis. Sample: Paraffin-embedded rat tissues. Muscarinic Acetylcholine Receptor M1/CHRM1 stained by Muscarinic Acetylcholine Receptor M1/CHRM1 antibody [HL3933] (NBP3-48854) diluted at 1:200. Antigen Retrieval: Tris-EDTA buffer, pH 9.0, 15 min



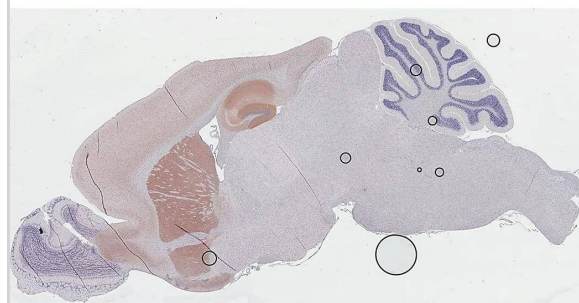
Muscarinic Acetylcholine Receptor M1/CHRM1 antibody [HL3933] detects Muscarinic Acetylcholine Receptor M1/CHRM1 protein by immunohistochemical analysis. Sample: Paraffin-embedded mouse striatum. Green: Muscarinic Acetylcholine Receptor M1/CHRM1 stained by Muscarinic Acetylcholine Receptor M1/CHRM1 antibody [HL3933] (NBP3-48854) diluted at 1:250. Red: beta Tubulin 3/ Tuj1 antibody [GT11710] diluted at 1:500. Blue: Hoechst 33342 staining. Antigen Retrieval: Tris-EDTA buffer, pH 9.0, 15 min



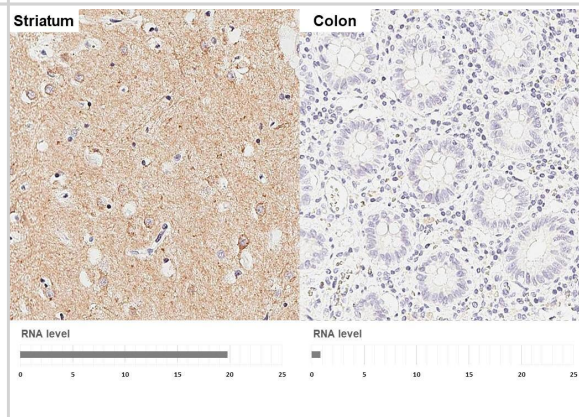
Unboiled rat tissue extract (50 ug) was separated by 10% SDS-PAGE, and the membrane was blotted with Muscarinic Acetylcholine Receptor M1/CHRM1 antibody [HL3933] (NBP3-48854) diluted at 1:1000. The HRP-conjugated anti-rabbit IgG antibody was used to detect the primary antibody.



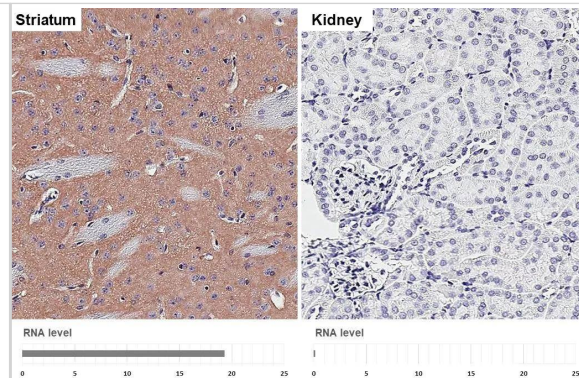
Muscarinic Acetylcholine Receptor M1/CHRM1 antibody [HL3933] detects Muscarinic Acetylcholine Receptor M1/CHRM1 protein by immunohistochemical analysis. Sample: Paraffin-embedded mouse brain. Muscarinic Acetylcholine Receptor M1/CHRM1 stained by Muscarinic Acetylcholine Receptor M1/CHRM1 antibody [HL3933] (NBP3-48854) diluted at 1:2000. Antigen Retrieval: Tris-EDTA buffer, pH 9.0, 15 min



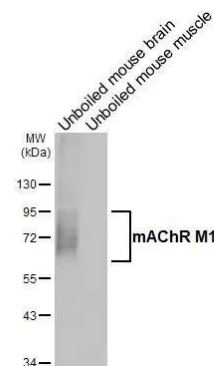
Muscarinic Acetylcholine Receptor M1/CHRM1 antibody [HL3933] detects Muscarinic Acetylcholine Receptor M1/CHRM1 protein by immunohistochemical analysis. Sample: Paraffin-embedded human tissues. Muscarinic Acetylcholine Receptor M1/CHRM1 stained by Muscarinic Acetylcholine Receptor M1/CHRM1 antibody [HL3933] (NBP3-48854) diluted at 1:200. Antigen Retrieval: Tris-EDTA buffer, pH 9.0, 15 min



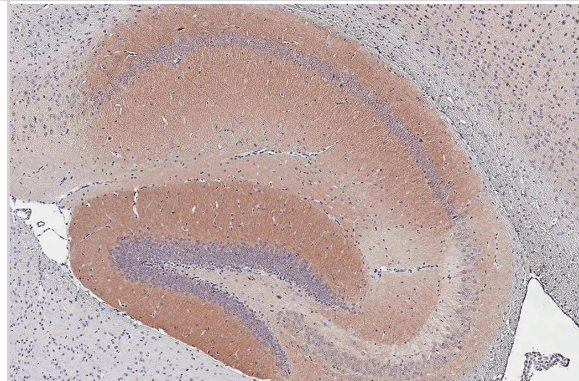
Muscarinic Acetylcholine Receptor M1/CHRM1 antibody [HL3933] detects Muscarinic Acetylcholine Receptor M1/CHRM1 protein by immunohistochemical analysis. Sample: Paraffin-embedded mouse tissues. Muscarinic Acetylcholine Receptor M1/CHRM1 stained by Muscarinic Acetylcholine Receptor M1/CHRM1 antibody [HL3933] (NBP3-48854) diluted at 1:2000. Antigen Retrieval: Tris-EDTA buffer, pH 9.0, 15 min



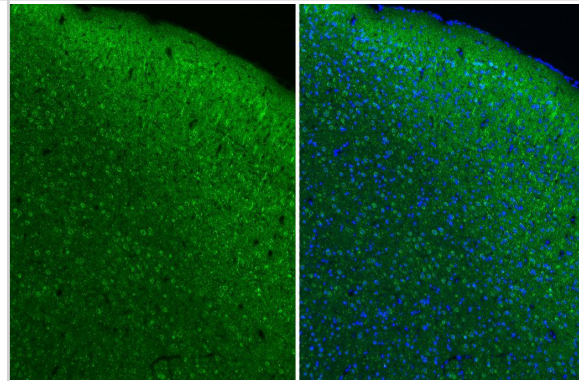
Unboiled various tissue extracts (50 ug) were separated by 10% SDS-PAGE, and the membrane was blotted with Muscarinic Acetylcholine Receptor M1/CHRM1 antibody [HL3933] (NBP3-48854) diluted at 1:1000. The HRP-conjugated anti-rabbit IgG antibody was used to detect the primary antibody.



Muscarinic Acetylcholine Receptor M1/CHRM1 antibody [HL3933] detects Muscarinic Acetylcholine Receptor M1/CHRM1 protein by immunohistochemical analysis. Sample: Paraffin-embedded mouse hippocampus. Muscarinic Acetylcholine Receptor M1/CHRM1 stained by Muscarinic Acetylcholine Receptor M1/CHRM1 antibody [HL3933] (NBP3-48854) diluted at 1:2000. Antigen Retrieval: Tris-EDTA buffer, pH 9.0, 15 min



Muscarinic Acetylcholine Receptor M1/CHRM1 antibody [HL3933] detects Muscarinic Acetylcholine Receptor M1/CHRM1 protein by immunohistochemical analysis. Sample: Paraffin-embedded mouse cerebral cortex. Green: Muscarinic Acetylcholine Receptor M1/CHRM1 stained by Muscarinic Acetylcholine Receptor M1/CHRM1 antibody [HL3933] (NBP3-48854) diluted at 1:250. Red: beta Tubulin 3/ Tuj1 antibody [GT11710] diluted at 1:500. Blue: Hoechst 33342 staining. Antigen Retrieval: Tris-EDTA buffer, pH 9.0, 15 min





Novus Biologicals USA

10730 E. Briarwood Avenue
Centennial, CO 80112
USA
Phone: 303.730.1950
Toll Free: 1.888.506.6887
Fax: 303.730.1966
nb-customerservice@bio-techne.com

Bio-Techne Canada

21 Canmotor Ave
Toronto, ON M8Z 4E6
Canada
Phone: 905.827.6400
Toll Free: 855.668.8722
Fax: 905.827.6402
canada.inquires@bio-techne.com

Bio-Techne Ltd

19 Barton Lane
Abingdon Science Park
Abingdon, OX14 3NB, United Kingdom
Phone: (44) (0) 1235 529449
Free Phone: 0800 37 34 15
Fax: (44) (0) 1235 533420
info.EMEA@bio-techne.com

General Contact Information

www.novusbio.com
Technical Support: nb-technical@bio-techne.com
Orders: nb-customerservice@bio-techne.com
General: novus@novusbio.com

Products Related to NBP3-48854

NBP2-33376H	Blue Marker Antibody (6F4-F6) [HRP]
HAF008	Goat anti-Rabbit IgG Secondary Antibody [HRP]
NB7160	Goat anti-Rabbit IgG (H+L) Secondary Antibody [HRP]
NBP2-24891	Rabbit IgG Isotype Control

Limitations

This product is for research use only and is not approved for use in humans or in clinical diagnosis. Primary Antibodies are guaranteed for 1 year from date of receipt.

For more information on our 100% guarantee, please visit www.novusbio.com/guarantee

Earn gift cards/discounts by submitting a review: www.novusbio.com/reviews/submit/NBP3-48854

Earn gift cards/discounts by submitting a publication using this product:
www.novusbio.com/publications

