

Product Datasheet

KDM6A Antibody (HMOV311)

NBP3-48801

Unit Size: 100 ul

Store at 4C short term. Aliquot and store at -20C long term. Avoid freeze-thaw cycles.

www.novusbio.com



technical@novusbio.com

Protocols, Publications, Related Products, Reviews, Research Tools and Images at:
www.novusbio.com/NBP3-48801

Updated 9/25/2025 v.20.1

Earn rewards for product reviews and publications.

Submit a publication at www.novusbio.com/publications

Submit a review at www.novusbio.com/reviews/destination/NBP3-48801



NBP3-48801

KDM6A Antibody (HVM311)

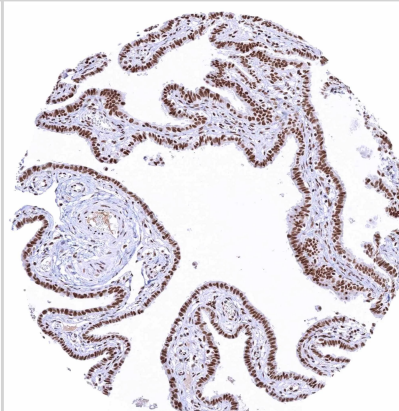
Product Information	
Unit Size	100 ul
Concentration	Concentrations vary lot to lot. See vial label for concentration. If unlisted please contact technical services.
Storage	Store at 4C short term. Aliquot and store at -20C long term. Avoid freeze-thaw cycles.
Clonality	Monoclonal
Clone	HMV311
Preservative	0.025% Proclin 300
Isotype	IgG
Purity	Protein A purified
Buffer	PBS, 2% BSA

Product Description	
Description	Novus Biologicals Rabbit KDM6A Antibody (HVM311) (NBP3-48801) is a recombinant monoclonal antibody validated for use in IHC. All Novus Biologicals antibodies are covered by our 100% guarantee.
Host	Rabbit
Gene ID	7403
Gene Symbol	KDM6A
Species	Human
Immunogen	Recombinant protein encompassing a sequence within the center region of human KDM6A. The exact sequence is proprietary.

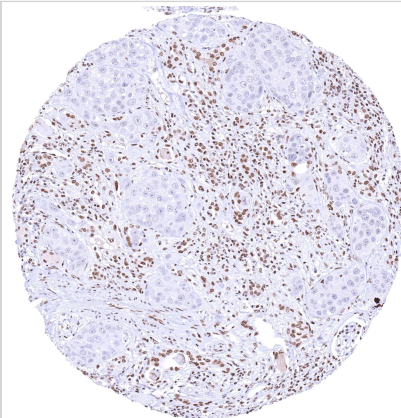
Product Application Details	
Applications	Immunohistochemistry-Paraffin, Immunohistochemistry
Recommended Dilutions	Immunohistochemistry, Immunohistochemistry-Paraffin

Images

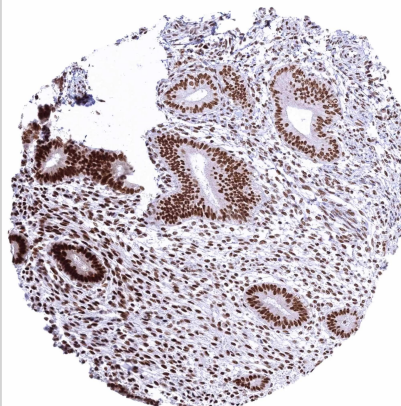
IHC-P analysis of human fallopian tube mucosa tissue using KDM6A antibody (HVM311). Strong nuclear KDM6A staining of all epithelial cells.



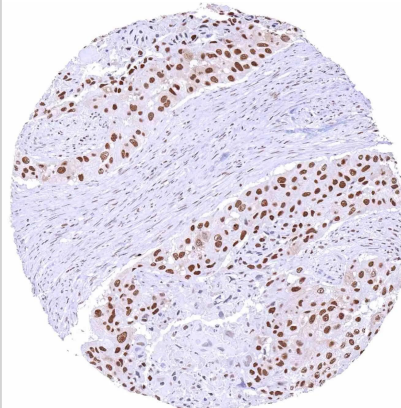
IHC-P analysis of human invasive urothelial carcinoma from kidney tissue using KDM6A antibody (HMV311). A complete absence of KDM6 staining in tumor cells



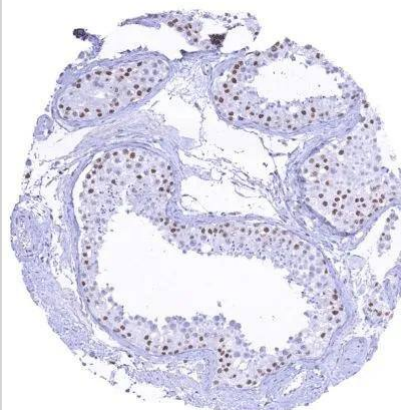
IHC-P analysis of human endometrium (proliferation) tissue using KDM6A antibody (HMV311). Strong nuclear KDM6A staining of epithelial and stromal cells.



IHC-P analysis of human squamous cell carcinoma (SCC) from penile tissue using KDM6A antibody (HMV311). Squamous cell carcinoma with strong KDM6A staining of tumor cells.



IHC-P analysis of human testis tissue using KDM6A antibody (HMV311). A moderate to A strong nuclear KDM6A staining of Sertoli cells. KDM6A staining is weak in spermatogonia and virtually absent in more mature cells of spermatogenesis.



IHC-P analysis of human thymus tissue using KDM6A antibody (HMV311). An intense nuclear KDM6A staining of all cell types.





Novus Biologicals USA

10730 E. Briarwood Avenue
Centennial, CO 80112
USA
Phone: 303.730.1950
Toll Free: 1.888.506.6887
Fax: 303.730.1966
nb-customerservice@bio-techne.com

Bio-Techne Canada

21 Canmotor Ave
Toronto, ON M8Z 4E6
Canada
Phone: 905.827.6400
Toll Free: 855.668.8722
Fax: 905.827.6402
canada.inquires@bio-techne.com

Bio-Techne Ltd

19 Barton Lane
Abingdon Science Park
Abingdon, OX14 3NB, United Kingdom
Phone: (44) (0) 1235 529449
Free Phone: 0800 37 34 15
Fax: (44) (0) 1235 533420
info.EMEA@bio-techne.com

General Contact Information

www.novusbio.com
Technical Support: nb-technical@bio-techne.com
Orders: nb-customerservice@bio-techne.com
General: novus@novusbio.com

Products Related to NBP3-48801

HAF008	Goat anti-Rabbit IgG Secondary Antibody [HRP]
NB7160	Goat anti-Rabbit IgG (H+L) Secondary Antibody [HRP]
NBP2-24891	Rabbit IgG Isotype Control
H00007403-Q01-10ug	Recombinant Human KDM6A GST (N-Term) Protein

Limitations

This product is for research use only and is not approved for use in humans or in clinical diagnosis. Primary Antibodies are guaranteed for 1 year from date of receipt.

For more information on our 100% guarantee, please visit www.novusbio.com/guarantee

Earn gift cards/discounts by submitting a review: www.novusbio.com/reviews/submit/NBP3-48801

Earn gift cards/discounts by submitting a publication using this product:
www.novusbio.com/publications

