

Product Datasheet

Dopamine Receptor D4 Antibody (HL2850) NBP3-48738

Unit Size: 100 ul

Store at 4C short term. Aliquot and store at -20C long term. Avoid freeze-thaw cycles.

www.novusbio.com



technical@novusbio.com

Protocols, Publications, Related Products, Reviews, Research Tools and Images at:
www.novusbio.com/NBP3-48738

Updated 9/9/2025 v.20.1

Earn rewards for product
reviews and publications.

Submit a publication at www.novusbio.com/publications

Submit a review at www.novusbio.com/reviews/destination/NBP3-48738



NBP3-48738**Dopamine Receptor D4 Antibody (HL2850)**

Product Information	
Unit Size	100 ul
Concentration	Concentrations vary lot to lot. See vial label for concentration. If unlisted please contact technical services.
Storage	Store at 4C short term. Aliquot and store at -20C long term. Avoid freeze-thaw cycles.
Clonality	Monoclonal
Clone	HL2850
Preservative	No Preservative
Isotype	IgG
Purity	Protein A purified
Buffer	PBS

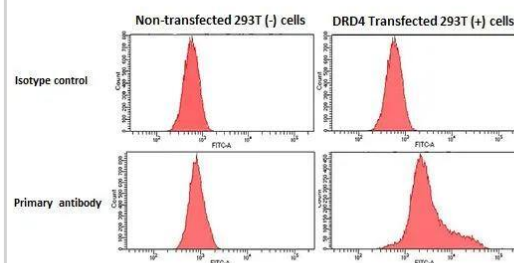
Product Description	
Description	Novus Biologicals Rabbit Dopamine Receptor D4 Antibody (HL2850) (NBP3-48738) is a recombinant monoclonal antibody validated for use in IHC. All Novus Biologicals antibodies are covered by our 100% guarantee.
Host	Rabbit
Gene ID	1815
Gene Symbol	DRD4
Species	Human
Immunogen	Synthetic peptide encompassing a sequence within the Extracellular domain human of Dopamine Receptor D4. The exact sequence is proprietary.

Product Application Details	
Applications	Immunohistochemistry-Paraffin, Immunohistochemistry
Recommended Dilutions	Immunohistochemistry, Immunohistochemistry-Paraffin

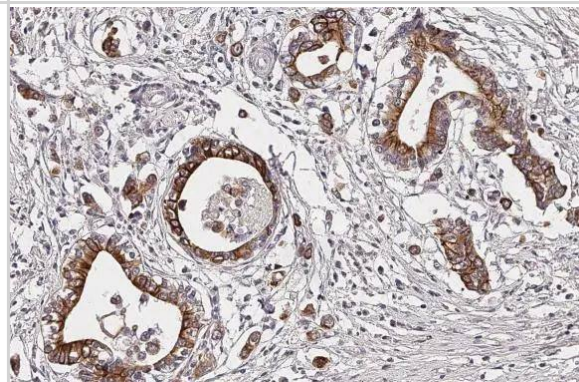


Images

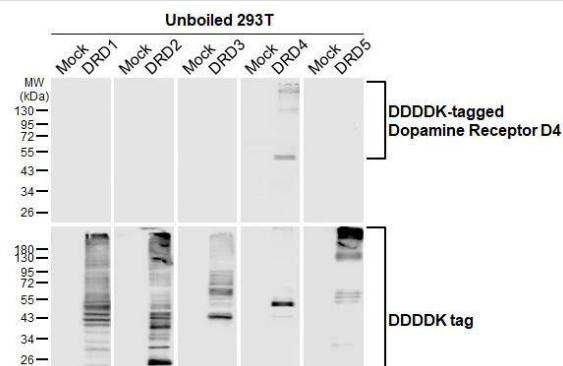
Dopamine Receptor D4 antibody [HL2850] (NBP3-48738) detects Dopamine Receptor D4 protein by flow cytometry analysis. Sample: Non-transfected and transfected 293T cells were fixed in 4% paraformaldehyde at 4C for 15 min and washed with 0.1% saponin buffer. The cells were following stained with Dopamine Receptor D4 antibody [HL2850] (NBP3-48738) diluted at 1:50 or a Rabbit monoclonal IgG isotype control at 4C for 1 hour.



Dopamine Receptor D4 antibody [HL2850] detects Dopamine Receptor D4 protein at cell membrane by immunohistochemical analysis. Sample: Paraffin-embedded human stomach tumor. Dopamine Receptor D4 stained by Dopamine Receptor D4 antibody [HL2850] (NBP3-48738) diluted at 1:100. Antigen Retrieval: Citrate buffer, pH 6.0, 15 min



Unboiled Non-transfected (-) and transfected (+) 293T whole cell extracts (30 ug) were separated by 10% SDS-PAGE, and the membrane was blotted with Dopamine Receptor D4 antibody [HL2850] (NBP3-48738) diluted at 1:5000. The HRP-conjugated anti-rabbit IgG antibody was used to detect the primary antibody.





Novus Biologicals USA

10730 E. Briarwood Avenue
Centennial, CO 80112
USA
Phone: 303.730.1950
Toll Free: 1.888.506.6887
Fax: 303.730.1966
nb-customerservice@bio-techne.com

Bio-Techne Canada

21 Canmotor Ave
Toronto, ON M8Z 4E6
Canada
Phone: 905.827.6400
Toll Free: 855.668.8722
Fax: 905.827.6402
canada.inquires@bio-techne.com

Bio-Techne Ltd

19 Barton Lane
Abingdon Science Park
Abingdon, OX14 3NB, United Kingdom
Phone: (44) (0) 1235 529449
Free Phone: 0800 37 34 15
Fax: (44) (0) 1235 533420
info.EMEA@bio-techne.com

General Contact Information

www.novusbio.com
Technical Support: nb-technical@bio-techne.com
Orders: nb-customerservice@bio-techne.com
General: novus@novusbio.com

Products Related to NBP3-48738

HAF008	Goat anti-Rabbit IgG Secondary Antibody [HRP]
NB7160	Goat anti-Rabbit IgG (H+L) Secondary Antibody [HRP]
NBP2-24891	Rabbit IgG Isotype Control
NBP3-24797PEP	Dopamine Receptor D4 Recombinant Protein Antigen

Limitations

This product is for research use only and is not approved for use in humans or in clinical diagnosis. Primary Antibodies are guaranteed for 1 year from date of receipt.

For more information on our 100% guarantee, please visit www.novusbio.com/guarantee

Earn gift cards/discounts by submitting a review: www.novusbio.com/reviews/submit/NBP3-48738

Earn gift cards/discounts by submitting a publication using this product:
www.novusbio.com/publications

