

Product Datasheet

DNA Polymerase beta Antibody (HL1512) NBP3-48656

Unit Size: 100 ul

Store at 4C short term. Aliquot and store at -20C long term. Avoid freeze-thaw cycles.

www.novusbio.com



technical@novusbio.com

Protocols, Publications, Related Products, Reviews, Research Tools and Images at:
www.novusbio.com/NBP3-48656

Updated 9/9/2025 v.20.1

Earn rewards for product
reviews and publications.

Submit a publication at www.novusbio.com/publications

Submit a review at www.novusbio.com/reviews/destination/NBP3-48656



NBP3-48656**DNA Polymerase beta Antibody (HL1512)**

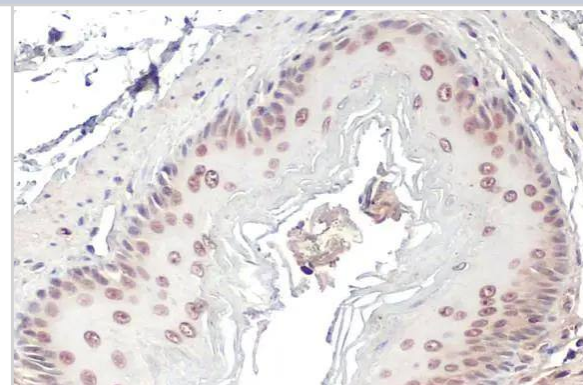
Product Information	
Unit Size	100 ul
Concentration	Concentrations vary lot to lot. See vial label for concentration. If unlisted please contact technical services.
Storage	Store at 4C short term. Aliquot and store at -20C long term. Avoid freeze-thaw cycles.
Clonality	Monoclonal
Clone	HL1512
Preservative	No Preservative
Isotype	IgG
Purity	Protein A purified
Buffer	PBS

Product Description	
Description	Novus Biologicals Rabbit DNA Polymerase beta Antibody (HL1512) (NBP3-48656) is a recombinant monoclonal antibody validated for use in IHC, WB and ICC/IF. All Novus Biologicals antibodies are covered by our 100% guarantee.
Host	Rabbit
Gene ID	5423
Gene Symbol	POLB
Species	Human, Mouse, Rat, Zebrafish
Immunogen	Recombinant protein encompassing a sequence within the center region of human DNA Polymerase beta. The exact sequence is proprietary.

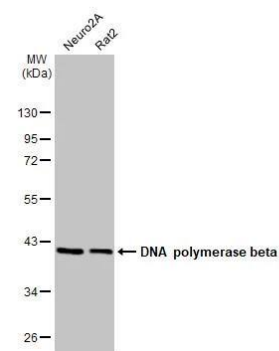
Product Application Details	
Applications	Western Blot, Immunohistochemistry-Paraffin, Immunocytochemistry/Immunofluorescence, Immunohistochemistry
Recommended Dilutions	Western Blot 1:500-1:3000, Immunohistochemistry, Immunocytochemistry/Immunofluorescence, Immunohistochemistry-Paraffin

Images

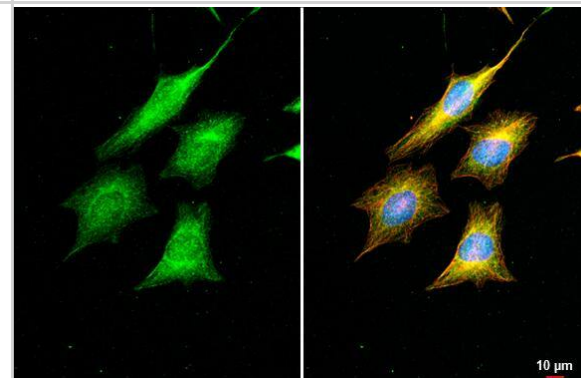
DNA Polymerase beta antibody [HL1512] detects DNA Polymerase beta protein at cytoplasm and nucleus by immunohistochemical analysis. Sample: Paraffin-embedded mouse esophagus. DNA Polymerase beta stained by DNA Polymerase beta antibody [HL1512] (NBP3-48656) diluted at 1:100. Antigen Retrieval: Citrate buffer, pH 6.0, 15 min



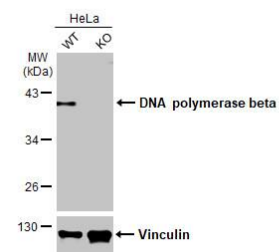
Various whole cell extracts (30 ug) were separated by 10% SDS-PAGE, and the membrane was blotted with DNA Polymerase beta antibody [HL1512] (NBP3-48656) diluted at 1:1000. The HRP-conjugated anti-rabbit IgG antibody was used to detect the primary antibody.



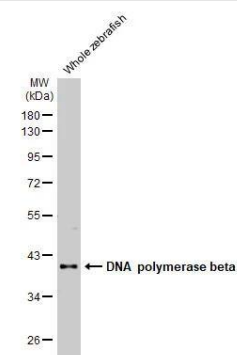
DNA Polymerase beta antibody [HL1512] detects DNA Polymerase beta protein by immunofluorescent analysis. Sample: HeLa cells were fixed in ice-cold MeOH for 10 min. Green: DNA Polymerase beta stained by DNA Polymerase beta antibody [HL1512] (NBP3-48656) diluted at 1:250. Red: alpha Tubulin, a cytoskeleton marker, stained by alpha Tubulin antibody [GT114] diluted at 1:1000. Blue: Fluoroshield with DAPI. Scale bar= 10 um.



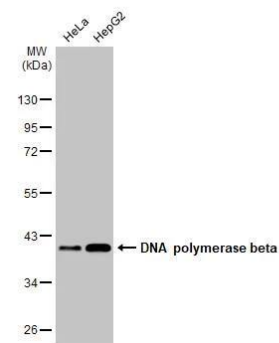
Wild-type (WT) and POLB knockout (KO) HeLa cell extracts (30 ug) were separated by 10% SDS-PAGE, and the membrane was blotted with DNA Polymerase beta antibody [HL1512] (NBP3-48656) diluted at 1:1000. The HRP-conjugated anti-rabbit IgG antibody was used to detect the primary antibody, and the signal was developed with Trident ECL plus-Enhanced.



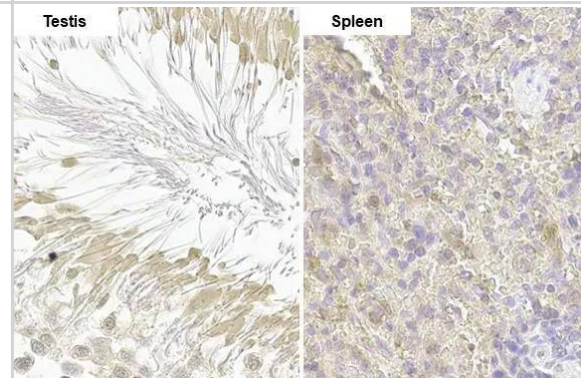
Whole zebrafish extract (30 ug) was separated by 10% SDS-PAGE, and the membrane was blotted with DNA Polymerase beta antibody [HL1512] (NBP3-48656) diluted at 1:1000. The HRP-conjugated anti-rabbit IgG antibody was used to detect the primary antibody.



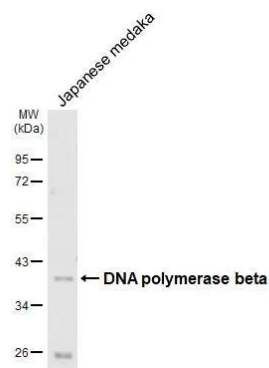
Various whole cell extracts (30 ug) were separated by 10% SDS-PAGE, and the membrane was blotted with DNA Polymerase beta antibody [HL1512] (NBP3-48656) diluted at 1:1000. The HRP-conjugated anti-rabbit IgG antibody was used to detect the primary antibody.



DNA Polymerase beta antibody [HL1512] detects DNA Polymerase beta protein by immunohistochemical analysis. Sample: Paraffin-embedded rat tissues. DNA Polymerase beta stained by DNA Polymerase beta antibody [HL1512] (NBP3-48656) diluted at 1:100. Antigen Retrieval: Citrate buffer, pH 6.0, 15 min



Whole Japanese medaka extract (30 ug) was separated by 10% SDS-PAGE, and the membrane was blotted with DNA Polymerase beta antibody [HL1512] (NBP3-48656) diluted at 1:1000. The HRP-conjugated anti-rabbit IgG antibody was used to detect the primary antibody.





Novus Biologicals USA

10730 E. Briarwood Avenue
Centennial, CO 80112
USA
Phone: 303.730.1950
Toll Free: 1.888.506.6887
Fax: 303.730.1966
nb-customerservice@bio-techne.com

Bio-Techne Canada

21 Canmotor Ave
Toronto, ON M8Z 4E6
Canada
Phone: 905.827.6400
Toll Free: 855.668.8722
Fax: 905.827.6402
canada.inquires@bio-techne.com

Bio-Techne Ltd

19 Barton Lane
Abingdon Science Park
Abingdon, OX14 3NB, United Kingdom
Phone: (44) (0) 1235 529449
Free Phone: 0800 37 34 15
Fax: (44) (0) 1235 533420
info.EMEA@bio-techne.com

General Contact Information

www.novusbio.com
Technical Support: nb-technical@bio-techne.com
Orders: nb-customerservice@bio-techne.com
General: novus@novusbio.com

Products Related to NBP3-48656

NBP2-33376H	Blue Marker Antibody (6F4-F6) [HRP]
HAF008	Goat anti-Rabbit IgG Secondary Antibody [HRP]
NB7160	Goat anti-Rabbit IgG (H+L) Secondary Antibody [HRP]
NBP2-24891	Rabbit IgG Isotype Control

Limitations

This product is for research use only and is not approved for use in humans or in clinical diagnosis. Primary Antibodies are guaranteed for 1 year from date of receipt.

For more information on our 100% guarantee, please visit www.novusbio.com/guarantee

Earn gift cards/discounts by submitting a review: www.novusbio.com/reviews/submit/NBP3-48656

Earn gift cards/discounts by submitting a publication using this product:
www.novusbio.com/publications

