

Product Datasheet

PDE6D Antibody (HL1359) NBP3-48654

Unit Size: 100 ul

Store at 4C short term. Aliquot and store at -20C long term. Avoid freeze-thaw cycles.

www.novusbio.com



technical@novusbio.com

Protocols, Publications, Related Products, Reviews, Research Tools and Images at:
www.novusbio.com/NBP3-48654

Updated 2/9/2026 v.20.1

Earn rewards for product
reviews and publications.

Submit a publication at www.novusbio.com/publications

Submit a review at www.novusbio.com/reviews/destination/NBP3-48654



NBP3-48654

PDE6D Antibody (HL1359)

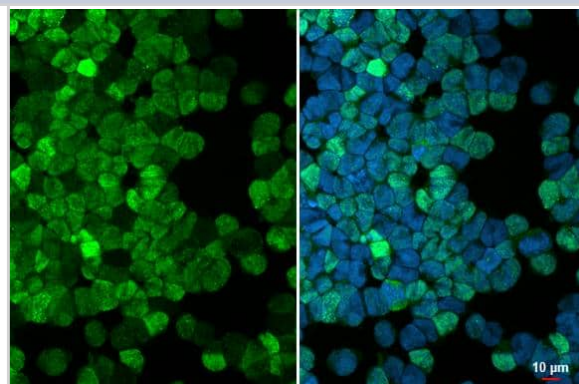
Product Information	
Unit Size	100 ul
Concentration	Concentrations vary lot to lot. See vial label for concentration. If unlisted please contact technical services.
Storage	Store at 4C short term. Aliquot and store at -20C long term. Avoid freeze-thaw cycles.
Clonality	Monoclonal
Clone	HL1359
Preservative	No Preservative
Isotype	IgG
Purity	Protein A purified
Buffer	PBS
Target Molecular Weight	17 kDa

Product Description	
Description	Novus Biologicals Rabbit PDE6D Antibody (HL1359) (NBP3-48654) is a recombinant monoclonal antibody validated for use in IHC, WB and ICC/IF. All Novus Biologicals antibodies are covered by our 100% guarantee.
Host	Rabbit
Gene ID	5147
Gene Symbol	PDE6D
Species	Human, Mouse, Rat, Canine, Feline, Zebrafish
Reactivity Notes	Japanese Medaka (100%).
Immunogen	Full length human PDE6D Recombinant protein

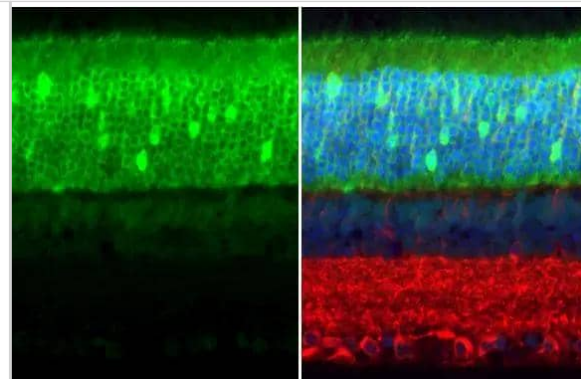
Product Application Details	
Applications	Western Blot, Immunohistochemistry-Paraffin, Immunocytochemistry/Immunofluorescence, Immunohistochemistry
Recommended Dilutions	Western Blot 1:500-1:3000, Immunohistochemistry Assay dependent, Immunocytochemistry/ Immunofluorescence Assay dependent, Immunohistochemistry-Paraffin Assay dependent

Images

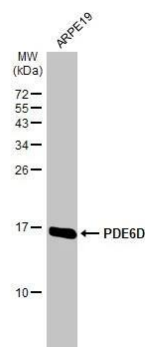
PDE6D antibody [HL1359] detects PDE6D protein at nucleus by immunofluorescent analysis. Sample: MOLT-4 cells were fixed in 4% paraformaldehyde at RT for 15 min. Green: PDE6D stained by PDE6D antibody [HL1359] (NBP3-48654) diluted at 1:500. Blue: Fluoroshield with DAPI .



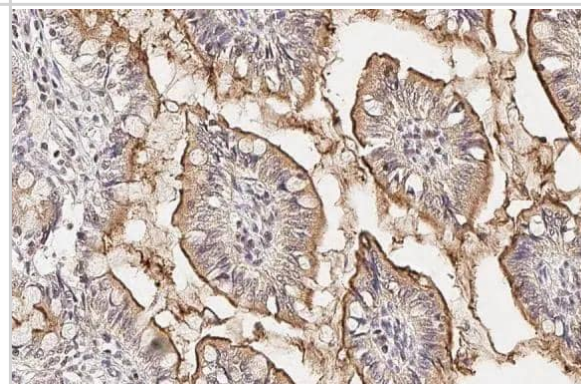
PDE6D antibody [HL1359] detects PDE6D protein at cytoplasm by immunohistochemical analysis. Sample: Paraffin-embedded mouse eye. Green: PDE6D stained by PDE6D antibody [HL1359] (NBP3-48654) diluted at 1:100. Red: beta Tubulin 3/ Tuj1, a neural marker, stained by beta Tubulin 3/ Tuj1 antibody [GT11710] diluted at 1:500. Blue: Fluoroshield with DAPI. Antigen Retrieval: Citrate buffer, pH 6.0, 15 min



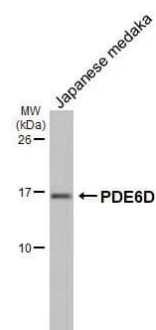
Whole cell extract (30 ug) was separated by 15% SDS-PAGE, and the membrane was blotted with PDE6D antibody [HL1359] (NBP3-48654) diluted at 1:1000. The HRP-conjugated anti-rabbit IgG antibody was used to detect the primary antibody.



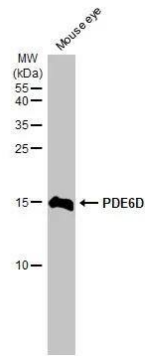
PDE6D antibody [HL1359] detects PDE6D protein at cytoplasm by immunohistochemical analysis. Sample: Paraffin-embedded cat colon. PDE6D stained by PDE6D antibody [HL1359] (NBP3-48654) diluted at 1:100. Antigen Retrieval: Citrate buffer, pH 6.0, 15 min



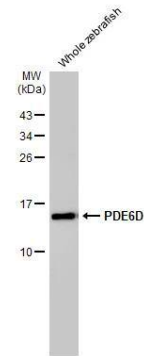
Whole Japanese medaka extract (30 ug) was separated by 15% SDS-PAGE, and the membrane was blotted with PDE6D antibody [HL1359] (NBP3-48654) diluted at 1:1000. The HRP-conjugated anti-rabbit IgG antibody was used to detect the primary antibody, and the signal was developed with Trident ECL plus-Enhanced.



Mouse tissue extract (50 ug) was separated by 15% SDS-PAGE, and the membrane was blotted with PDE6D antibody [HL1359] (NBP3-48654) diluted at 1:1000. The HRP-conjugated anti-rabbit IgG antibody was used to detect the primary antibody.



Whole zebrafish extract (30 ug) was separated by 15% SDS-PAGE, and the membrane was blotted with PDE6D antibody [HL1359] (NBP3-48654) diluted at 1:1000. The HRP-conjugated anti-rabbit IgG antibody was used to detect the primary antibody.

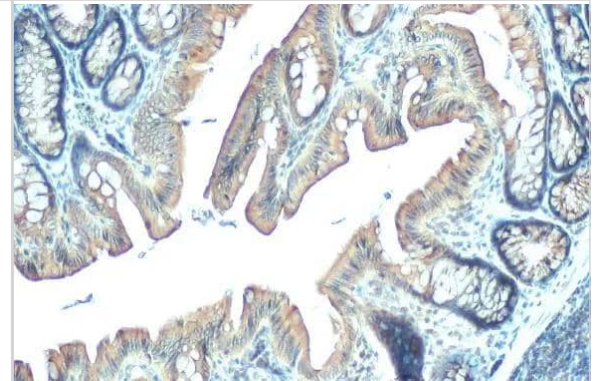


PDE6D antibody [HL1359] detects PDE6D protein at cytoplasm by immunohistochemical analysis.

Sample: Paraffin-embedded rat colon.

PDE6D stained by PDE6D antibody [HL1359] (NBP3-48654) diluted at 1:100.

Antigen Retrieval: Citrate buffer, pH 6.0, 15 min

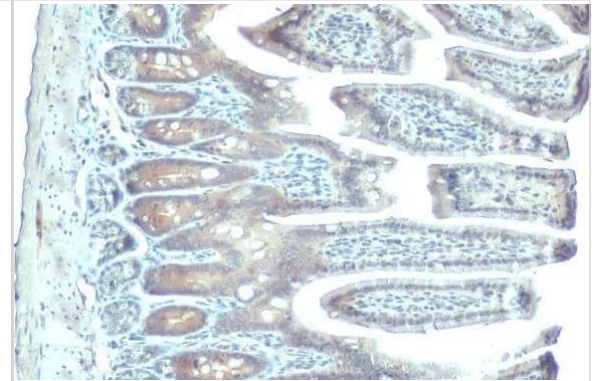


PDE6D antibody [HL1359] detects PDE6D protein at cytoplasm by immunohistochemical analysis.

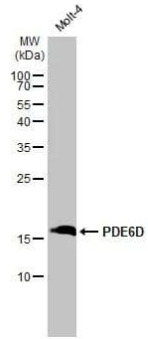
Sample: Paraffin-embedded mouse intestine.

PDE6D stained by PDE6D antibody [HL1359] (NBP3-48654) diluted at 1:100.

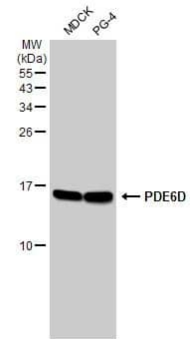
Antigen Retrieval: Citrate buffer, pH 6.0, 15 min



Whole cell extract (30 ug) was separated by 15% SDS-PAGE, and the membrane was blotted with PDE6D antibody [HL1359] (NBP3-48654) diluted at 1:1000. The HRP-conjugated anti-rabbit IgG antibody was used to detect the primary antibody.



Various whole cell extracts (30 ug) were separated by 15% SDS-PAGE, and the membrane was blotted with PDE6D antibody [HL1359] (NBP3-48654) diluted at 1:1000. The HRP-conjugated anti-rabbit IgG antibody was used to detect the primary antibody.





Novus Biologicals USA

10730 E. Briarwood Avenue
Centennial, CO 80112
USA
Phone: 303.730.1950
Toll Free: 1.888.506.6887
Fax: 303.730.1966
nb-customerservice@bio-techne.com

Bio-Techne Canada

21 Canmotor Ave
Toronto, ON M8Z 4E6
Canada
Phone: 905.827.6400
Toll Free: 855.668.8722
Fax: 905.827.6402
canada.inquires@bio-techne.com

Bio-Techne Ltd

19 Barton Lane
Abingdon Science Park
Abingdon, OX14 3NB, United Kingdom
Phone: (44) (0) 1235 529449
Free Phone: 0800 37 34 15
Fax: (44) (0) 1235 533420
info.EMEA@bio-techne.com

General Contact Information

www.novusbio.com
Technical Support: nb-technical@bio-techne.com
Orders: nb-customerservice@bio-techne.com
General: novus@novusbio.com

Products Related to NBP3-48654

NBP2-33376H	Blue Marker Antibody (6F4-F6) [HRP]
HAF008	Goat anti-Rabbit IgG Secondary Antibody [HRP]
NB7160	Goat anti-Rabbit IgG (H+L) Secondary Antibody [HRP]
NBP2-24891	Rabbit IgG Isotype Control

Limitations

This product is for research use only and is not approved for use in humans or in clinical diagnosis. Primary Antibodies are guaranteed for 1 year from date of receipt.

For more information on our 100% guarantee, please visit www.novusbio.com/guarantee

Earn gift cards/discounts by submitting a review: www.novusbio.com/reviews/submit/NBP3-48654

Earn gift cards/discounts by submitting a publication using this product:
www.novusbio.com/publications

