

# Product Datasheet

## Tau Antibody (HL2736) - Azide and BSA Free NBP3-45160

Unit Size: 100 ul

Store at 4C short term. Aliquot and store at -20C long term. Avoid freeze-thaw cycles.

[www.novusbio.com](http://www.novusbio.com)



[technical@novusbio.com](mailto:technical@novusbio.com)

Protocols, Publications, Related Products, Reviews, Research Tools and Images at:  
[www.novusbio.com/NBP3-45160](http://www.novusbio.com/NBP3-45160)

Updated 9/9/2025 v.20.1

Earn rewards for product  
reviews and publications.

Submit a publication at [www.novusbio.com/publications](http://www.novusbio.com/publications)

Submit a review at [www.novusbio.com/reviews/destination/NBP3-45160](http://www.novusbio.com/reviews/destination/NBP3-45160)



**NBP3-45160**

Tau Antibody (HL2736) - Azide and BSA Free

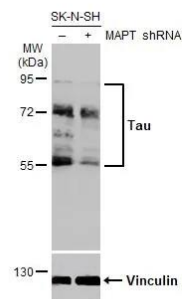
Product Information	
Unit Size	100 ul
Concentration	Concentrations vary lot to lot. See vial label for concentration. If unlisted please contact technical services.
Storage	Store at 4C short term. Aliquot and store at -20C long term. Avoid freeze-thaw cycles.
Clonality	Monoclonal
Clone	HL2736
Preservative	No Preservative
Isotype	IgG
Purity	Protein A purified
Buffer	PBS

Product Description	
Description	Novus Biologicals Rabbit Tau Antibody (HL2736) - Azide and BSA Free (NBP3-45160) is a recombinant monoclonal antibody validated for use in WB and ICC/IF. All Novus Biologicals antibodies are covered by our 100% guarantee.
Host	Rabbit
Gene ID	4137
Gene Symbol	MAPT
Species	Human, Mouse, Rat
Immunogen	Recombinant fragment of human Tau.

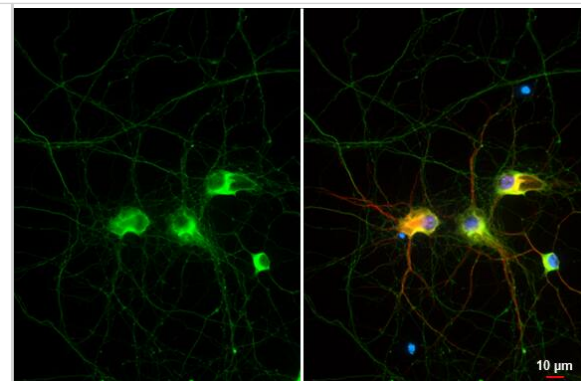
Product Application Details	
Applications	Western Blot, Immunocytochemistry/ Immunofluorescence, Knockdown Validated
Recommended Dilutions	Western Blot, Immunocytochemistry/ Immunofluorescence, Knockdown Validated

**Images**

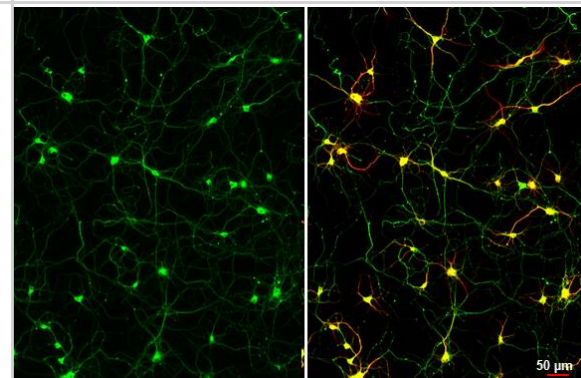
Western Blot: Rabbit Tau mAb (HL2736) [NBP3-45160] - Non-transfected (-) and transfected (+) SK-N-SH whole cell extracts (30 ug) were separated by 7.5% SDS-PAGE, and the membrane was blotted with Tau antibody [HL2736] diluted at 1:500. The HRP-conjugated anti-rabbit IgG antibody was used to detect the primary antibody, and the signal was developed with Trident ECL plus-Enhanced.



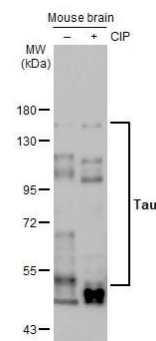
**Immunohistochemistry:** Rabbit Tau mAb (HL2736) [NBP3-45160] - Tau antibody [HL2736] detects Tau protein by immunofluorescent analysis.  
**Sample:** DIV11 rat E18 primary cortical neuron cells were fixed in 4% paraformaldehyde at RT for 15 min.  
**Green:** Tau stained by Tau antibody [HL2736] diluted at 1:250.  
**Red:** MAP2, a microtubule marker, stained by MAP2 antibody [HM-2] diluted at 1:500.



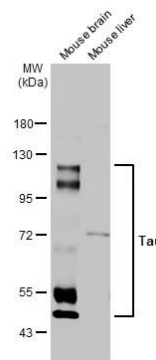
**Immunocytochemistry/ Immunofluorescence:** Rabbit Tau mAb (HL2736) [NBP3-45160] - Tau antibody [HL2736] detects Tau protein at cytoskeleton by immunofluorescent analysis.  
**Sample:** DIV9 rat E18 primary cortical neuron cells were fixed in 4% paraformaldehyde at RT for 15 min.  
**Green:** Tau stained by Tau antibody [HL2736] diluted at 1:250.  
**Red:** Tau, an axon marker, stained by Tau antibody [GT287] diluted at 1:500.  
**Blue:** Fluoroshield with DAPI.



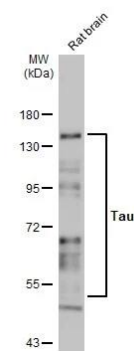
**Western Blot:** Rabbit Tau mAb (HL2736) [NBP3-45160] - Untreated (-) and treated (+) mouse tissue extract (50 µg) were separated by 7.5% SDS-PAGE, and the membrane was blotted with Tau antibody [HL2736] diluted at 1:1000. The HRP-conjugated anti-rabbit IgG antibody was used to detect the primary antibody.



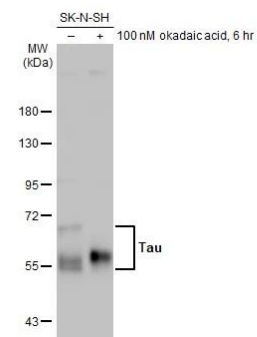
**Western Blot:** Rabbit Tau mAb (HL2736) [NBP3-45160] - Various tissue extracts (50 µg) were separated by 7.5% SDS-PAGE, and the membrane was blotted with Tau antibody [HL2736] diluted at 1:1000. The HRP-conjugated anti-rabbit IgG antibody was used to detect the primary antibody.



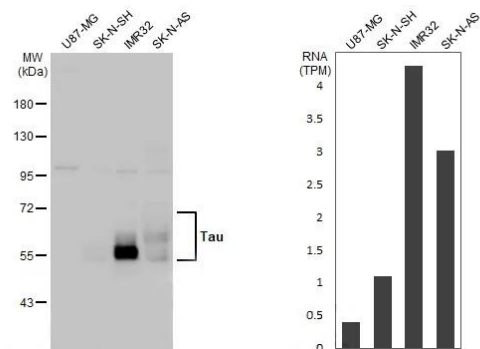
Western Blot: Rabbit Tau mAb (HL2736) [NBP3-45160] - Rat tissue extract (50 ug) was separated by 7.5% SDS-PAGE, and the membrane was blotted with Tau antibody [HL2736] diluted at 1:1000. The HRP-conjugated anti-rabbit IgG antibody was used to detect the primary antibody.



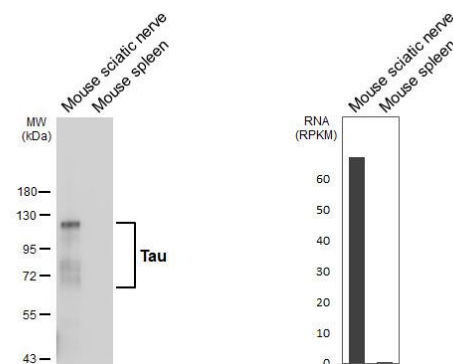
Western Blot: Rabbit Tau mAb (HL2736) [NBP3-45160] - Untreated (-) and treated (+) SK-N-SH whole cell extract (30  $\mu$ g) were separated by 7.5% SDS-PAGE, and the membrane was blotted with Tau antibody [HL2736] diluted at 1:500. The HRP-conjugated anti-rabbit IgG antibody was used to detect the primary antibody.



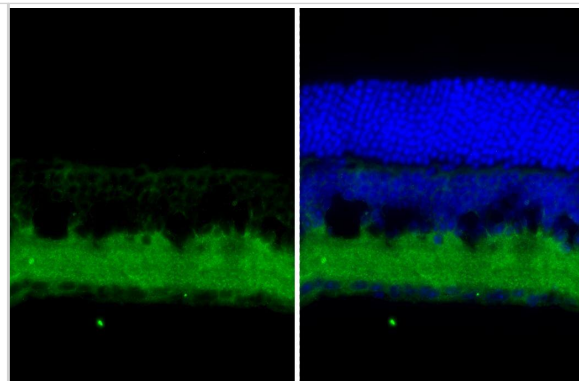
Western Blot: Rabbit Tau mAb (HL2736) [NBP3-45160] - Various whole cell extracts (30 ug) were separated by 7.5% SDS-PAGE, and the membrane was blotted with Tau antibody [HL2736] diluted at 1:1000. The HRP-conjugated anti-rabbit IgG antibody was used to detect the primary antibody. Corresponding RNA expression data for the same cell lines are based on Human Protein Atlas program.



Various tissue extracts (50 ug) were separated by 7.5% SDS-PAGE, and the membrane was blotted with Tau antibody [HL2736] (NBP3-45160) diluted at 1:1000. The HRP-conjugated anti-rabbit IgG antibody was used to detect the primary antibody. Corresponding RNA expression data are based on NCBI database.



Tau antibody [HL2736] detects Tau protein by immunohistochemical analysis. Sample: Frozen-sectioned mouse eye. Green: Tau stained by Tau antibody [HL2736] (NBP3-45160) diluted at 1:250. Blue: Hoechst 33342 staining.





### **Novus Biologicals USA**

10730 E. Briarwood Avenue  
Centennial, CO 80112  
USA  
Phone: 303.730.1950  
Toll Free: 1.888.506.6887  
Fax: 303.730.1966  
nb-customerservice@bio-techne.com

### **Bio-Techne Canada**

21 Canmotor Ave  
Toronto, ON M8Z 4E6  
Canada  
Phone: 905.827.6400  
Toll Free: 855.668.8722  
Fax: 905.827.6402  
canada.inquires@bio-techne.com

### **Bio-Techne Ltd**

19 Barton Lane  
Abingdon Science Park  
Abingdon, OX14 3NB, United Kingdom  
Phone: (44) (0) 1235 529449  
Free Phone: 0800 37 34 15  
Fax: (44) (0) 1235 533420  
info.EMEA@bio-techne.com

### **General Contact Information**

www.novusbio.com  
Technical Support: nb-technical@bio-techne.com  
Orders: nb-customerservice@bio-techne.com  
General: novus@novusbio.com

### **Products Related to NBP3-45160**

---

NBP2-33376H	Blue Marker Antibody (6F4-F6) [HRP]
HAF008	Goat anti-Rabbit IgG Secondary Antibody [HRP]
NB7160	Goat anti-Rabbit IgG (H+L) Secondary Antibody [HRP]
NBP2-24891	Rabbit IgG Isotype Control

---

### **Limitations**

This product is for research use only and is not approved for use in humans or in clinical diagnosis. Primary Antibodies are guaranteed for 1 year from date of receipt.

For more information on our 100% guarantee, please visit [www.novusbio.com/guarantee](http://www.novusbio.com/guarantee)

Earn gift cards/discounts by submitting a review: [www.novusbio.com/reviews/submit/NBP3-45160](http://www.novusbio.com/reviews/submit/NBP3-45160)

Earn gift cards/discounts by submitting a publication using this product:  
[www.novusbio.com/publications](http://www.novusbio.com/publications)

