

Product Datasheet

Human PTPLA - Ready-To-Use ELISA Kit (Colorimetric) NBP3-39060

Unit Size: 1 Kit

Storage of components varies. See protocol for specific instructions.

www.novusbio.com



technical@novusbio.com

Protocols, Publications, Related Products, Reviews, Research Tools and Images at:
www.novusbio.com/NBP3-39060

Updated 10/16/2024 v.20.1

Earn rewards for product
reviews and publications.

Submit a publication at www.novusbio.com/publications

Submit a review at www.novusbio.com/reviews/destination/NBP3-39060

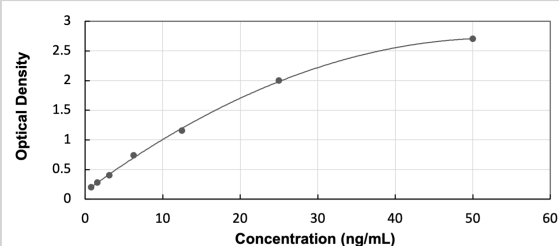


NBP3-39060**Human PTPLA - Ready-To-Use ELISA Kit (Colorimetric)**

Product Information	
Unit Size	1 Kit
Concentration	Concentration is not relevant for this product. Please see the protocols for proper use of this product.
Storage	Storage of components varies. See protocol for specific instructions.
Product Description	
Description	The Ready-To-Use ELISA kit offers pre-diluted detection reagents and a shorter experimental time. Assay Length: 3 hours
Gene ID	9200
Gene Symbol	HACD1
Species	Human
Kit Components	Pre-coated 96T strip plate, Plate sealer for 96 wells, Standard, Standard Diluent, Detection Solution A, Detection Solution B, TMB Substrate, Stop Solution, Wash Buffer (30 x concentrate), Instruction manual
Standard Curve Range	0.781 - 50 ng/mL (example only; lot dependent)
Sensitivity	0.25 ng/mL (example only; lot dependent)
Inter Assay	%CV < 12 (example only; lot dependent)
Intra Assay	%CV < 10 (example only; lot dependent)
Assay Type	Sandwich ELISA
Suitable Sample Type	Tissue homogenates, cell lysates and other biological fluids
Sample Volume	100 uL

Images

ELISA: Human PTPLA - Ready-To-Use ELISA Kit (Colorimetric) [NBP3-39060] - Standard Curve Reference





Novus Biologicals USA

10730 E. Briarwood Avenue
Centennial, CO 80112
USA
Phone: 303.730.1950
Toll Free: 1.888.506.6887
Fax: 303.730.1966
nb-customerservice@bio-techne.com

Bio-Techne Canada

21 Canmotor Ave
Toronto, ON M8Z 4E6
Canada
Phone: 905.827.6400
Toll Free: 855.668.8722
Fax: 905.827.6402
canada.inquires@bio-techne.com

Bio-Techne Ltd

19 Barton Lane
Abingdon Science Park
Abingdon, OX14 3NB, United Kingdom
Phone: (44) (0) 1235 529449
Free Phone: 0800 37 34 15
Fax: (44) (0) 1235 533420
info.EMEA@bio-techne.com

General Contact Information

www.novusbio.com
Technical Support: nb-technical@bio-techne.com
Orders: nb-customerservice@bio-techne.com
General: novus@novusbio.com

Products Related to NBP3-39060

210-TA-005	TNF-alpha [Unconjugated]
NBL1-14964	PTPLA Overexpression Lysate
M6000B-1	IL-6 [HRP]
MAB1455	Albumin Antibody (188835) [Unconjugated] - Serum

Limitations

This product is for research use only and is not approved for use in humans or in clinical diagnosis. ELISA Kits are guaranteed for 6 months from date of receipt.

For more information on our 100% guarantee, please visit www.novusbio.com/guarantee

Earn gift cards/discounts by submitting a review: www.novusbio.com/reviews/submit/NBP3-39060

Earn gift cards/discounts by submitting a publication using this product:
www.novusbio.com/publications

