

# Product Datasheet

## HLA DPB1 Antibody - BSA Free NBP3-35275-100ul

Unit Size: 100 ul

Store at -20C. Avoid freeze-thaw cycles.

[www.novusbio.com](http://www.novusbio.com)



[technical@novusbio.com](mailto:technical@novusbio.com)

Protocols, Publications, Related Products, Reviews, Research Tools and Images at:  
[www.novusbio.com/NBP3-35275](http://www.novusbio.com/NBP3-35275)

Updated 3/4/2026 v.20.1

Earn rewards for product  
reviews and publications.

Submit a publication at [www.novusbio.com/publications](http://www.novusbio.com/publications)

Submit a review at [www.novusbio.com/reviews/destination/NBP3-35275](http://www.novusbio.com/reviews/destination/NBP3-35275)



**NBP3-35275-100ul**

HLA DPB1 Antibody - BSA Free

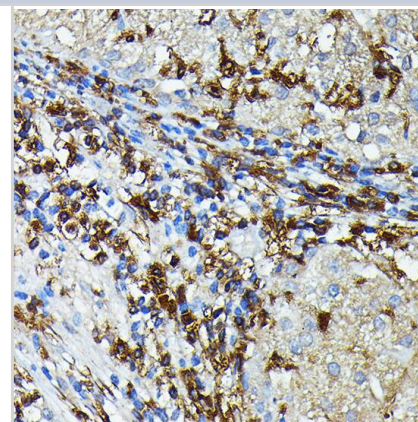
Product Information	
<b>Unit Size</b>	100 ul
<b>Concentration</b>	Please see the vial label for concentration. If unlisted please contact technical services.
<b>Storage</b>	Store at -20C. Avoid freeze-thaw cycles.
<b>Clonality</b>	Polyclonal
<b>Preservative</b>	0.02% Sodium Azide
<b>Isotype</b>	IgG
<b>Purity</b>	Affinity purified
<b>Buffer</b>	PBS (pH 7.3), 50% glycerol
<b>Target Molecular Weight</b>	29 kDa

Product Description	
<b>Host</b>	Rabbit
<b>Gene ID</b>	3115
<b>Gene Symbol</b>	HLA-DPB1
<b>Species</b>	Human, Mouse, Rat
<b>Immunogen</b>	A synthetic peptide corresponding to a sequence within amino acids 40-100 of human HLA DPB1 (NP_002112.3).  Sequence: GRQECYAFNGTQRFLERYIYNREEFARFSDVGEFRAVTELGRPAAEYWNSQ KDILEEKRA

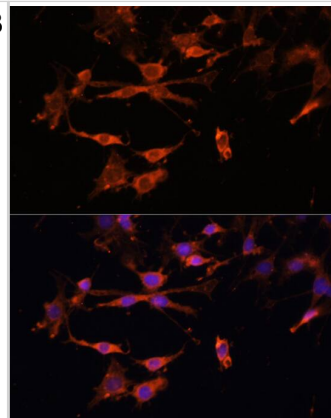
Product Application Details	
<b>Applications</b>	Western Blot, Immunohistochemistry-Paraffin, ELISA, Immunocytochemistry/ Immunofluorescence, Immunohistochemistry
<b>Recommended Dilutions</b>	Western Blot 1:500 - 1:1000, ELISA, Immunohistochemistry, Immunocytochemistry/ Immunofluorescence 1:50 - 1:200, Immunohistochemistry-Paraffin 1:50 - 1:200

**Images**

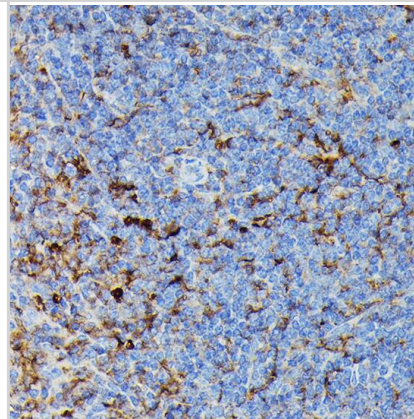
Immunohistochemistry: HLA DPB1 Antibody [NBP3-35275] - Immunohistochemistry analysis of paraffin-embedded Human liver cancer using HLA-DPB1 Rabbit pAb (A17495) at dilution of 1:100 (40x lens). High pressure antigen retrieval performed with 0.01M Citrate Bufferr (pH 6.0) prior to IHC staining.



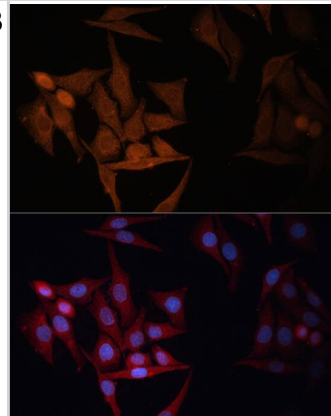
Immunocytochemistry/ Immunofluorescence: HLA DPB1 Antibody [NBP3-35275] - Immunofluorescence analysis of C6 cells using HLA-DPB1 Rabbit pAb (A17495) at dilution of 1:100. Secondary antibody: Cy3-conjugated Goat anti-Rabbit IgG (H+L) (AS007) at 1:500 dilution. Blue: DAPI for nuclear staining.



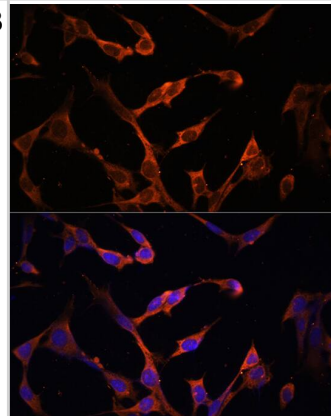
Immunohistochemistry: HLA DPB1 Antibody [NBP3-35275] - Immunohistochemistry analysis of paraffin-embedded Mouse spleen using HLA DPB1 Rabbit pAb at dilution of 1:100 (40x lens). High pressure antigen retrieval performed with 0.01M Citrate Bufferr (pH 6.0) prior to IHC staining.



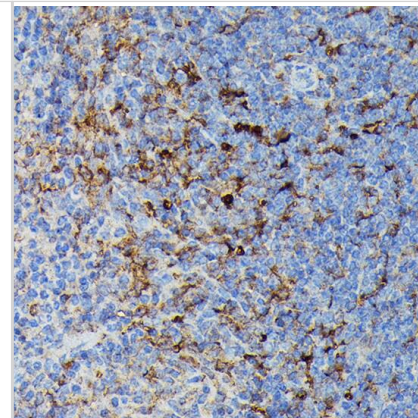
Immunocytochemistry/ Immunofluorescence: HLA DPB1 Antibody [NBP3-35275] - Immunofluorescence analysis of HeLa cells using HLA-DPB1 Rabbit pAb (A17495) at dilution of 1:100. Secondary antibody: Cy3-conjugated Goat anti-Rabbit IgG (H+L) (AS007) at 1:500 dilution. Blue: DAPI for nuclear staining.



Immunocytochemistry/ Immunofluorescence: HLA DPB1 Antibody [NBP3-35275] - Immunofluorescence analysis of NIH/3T3 cells using HLA-DPB1 Rabbit pAb (A17495) at dilution of 1:100. Secondary antibody: Cy3-conjugated Goat anti-Rabbit IgG (H+L) (AS007) at 1:500 dilution. Blue: DAPI for nuclear staining.



**Immunohistochemistry: HLA DPB1 Antibody [NBP3-35275] -**  
 Immunohistochemistry analysis of paraffin-embedded Human liver cancer using HLA DPB1 Rabbit pAb at dilution of 1:100 (40x lens). High pressure antigen retrieval performed with 0.01M Citrate Buffer (pH 6.0) prior to IHC staining.



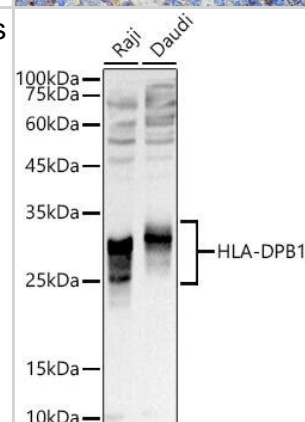
**Western Blot: HLA DPB1 Antibody [NBP3-35275] -** Western blot analysis of various lysates using HLA DPB1 Rabbit pAb at 1:1000 dilution.  
 Secondary antibody: HRP-conjugated Goat anti-Rabbit IgG (H+L) at 1:10000 dilution.

Lysates/proteins: 25ug per lane.

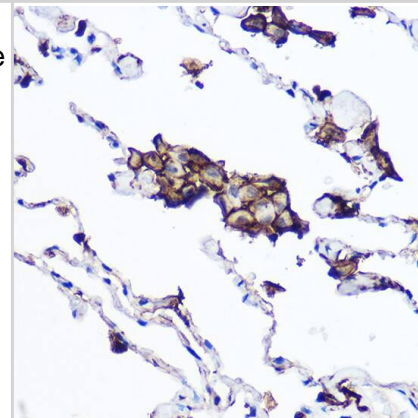
Blocking buffer: 3% nonfat dry milk in TBST.

Detection: ECL Basic Kit.

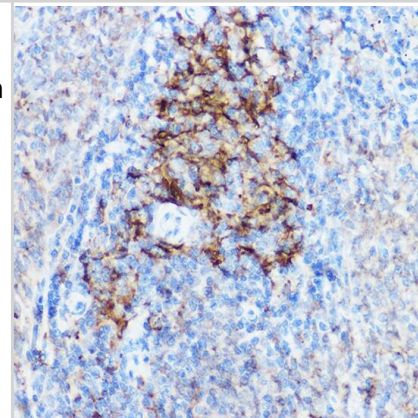
Exposure time: 1s.



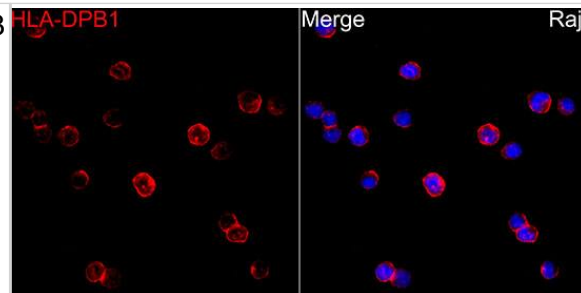
**Immunohistochemistry: HLA DPB1 Antibody [NBP3-35275] -**  
 Immunohistochemistry analysis of paraffin-embedded Human lung tissue using HLA DPB1 Rabbit pAb at a dilution of 1:100 (40x lens). High pressure antigen retrieval was performed with 0.01 M citrate buffer (pH 6.0) prior to IHC staining.



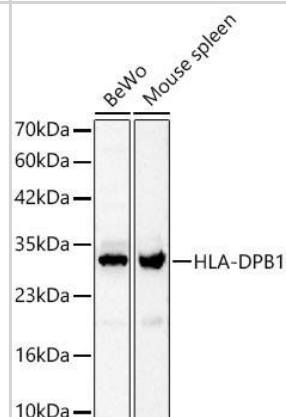
**Immunohistochemistry: HLA DPB1 Antibody [NBP3-35275] -**  
 Immunohistochemistry analysis of paraffin-embedded Mouse spleen tissue using HLA DPB1 Rabbit pAb at a dilution of 1:100 (40x lens). High pressure antigen retrieval was performed with 0.01 M citrate buffer (pH 6.0) prior to IHC staining.



Immunocytochemistry/ Immunofluorescence: HLA DPB1 Antibody [NBP3-35275] - Immunofluorescence analysis of Raji cells using HLA DPB1 Rabbit pAb at dilution of 1:100 (40x lens). Secondary antibody: Cy3-conjugated Goat anti-Rabbit IgG (H+L) at 1:500 dilution. Blue: DAPI for nuclear staining.



Western Blot: HLA DPB1 Antibody [NBP3-35275] - Western Blot analysis of various lysates using HLA DPB1 Rabbit pAb at 1:1000 dilution.  
Secondary antibody: HRP-conjugated Goat anti-Rabbit IgG (H+L) at 1:10000 dilution.  
Lysates / proteins: 25 ug per lane.  
Blocking buffer: 3 % nonfat dry milk in TBST.  
Detection: ECL Basic Kit.  
Exposure time: 45s.





### Novus Biologicals USA

10730 E. Briarwood Avenue  
Centennial, CO 80112  
USA  
Phone: 303.730.1950  
Toll Free: 1.888.506.6887  
Fax: 303.730.1966  
nb-customerservice@bio-techne.com

### Bio-Techne Canada

21 Canmotor Ave  
Toronto, ON M8Z 4E6  
Canada  
Phone: 905.827.6400  
Toll Free: 855.668.8722  
Fax: 905.827.6402  
canada.inquires@bio-techne.com

### Bio-Techne Ltd

19 Barton Lane  
Abingdon Science Park  
Abingdon, OX14 3NB, United Kingdom  
Phone: (44) (0) 1235 529449  
Free Phone: 0800 37 34 15  
Fax: (44) (0) 1235 533420  
info.EMEA@bio-techne.com

### General Contact Information

www.novusbio.com  
Technical Support: nb-technical@bio-techne.com  
Orders: nb-customerservice@bio-techne.com  
General: novus@novusbio.com

### Products Related to NBP3-35275-100ul

---

HAF008	Goat anti-Rabbit IgG Secondary Antibody [HRP]
NB7160	Goat anti-Rabbit IgG (H+L) Secondary Antibody [HRP]
NBP2-24891	Rabbit IgG Isotype Control
H00003115-P01-10ug	Recombinant Human HLA DPB1 GST (N-Term) Protein

---

### Limitations

This product is for research use only and is not approved for use in humans or in clinical diagnosis. Primary Antibodies are guaranteed for 1 year from date of receipt.

For more information on our 100% guarantee, please visit [www.novusbio.com/guarantee](http://www.novusbio.com/guarantee)

Earn gift cards/discounts by submitting a review: [www.novusbio.com/reviews/submit/NBP3-35275](http://www.novusbio.com/reviews/submit/NBP3-35275)

Earn gift cards/discounts by submitting a publication using this product:  
[www.novusbio.com/publications](http://www.novusbio.com/publications)

