

# Product Datasheet

## Adenine Nucleotide Translocase 1 Antibody (3C1Q3) NBP3-35061-100ul

Unit Size: 100 ul

Store at -20C. Avoid freeze-thaw cycles.

[www.novusbio.com](http://www.novusbio.com)



[technical@novusbio.com](mailto:technical@novusbio.com)

Protocols, Publications, Related Products, Reviews, Research Tools and Images at:  
[www.novusbio.com/NBP3-35061](http://www.novusbio.com/NBP3-35061)

Updated 2/17/2026 v.20.1

Earn rewards for product  
reviews and publications.

Submit a publication at [www.novusbio.com/publications](http://www.novusbio.com/publications)

Submit a review at [www.novusbio.com/reviews/destination/NBP3-35061](http://www.novusbio.com/reviews/destination/NBP3-35061)



**NBP3-35061-100ul****Adenine Nucleotide Translocase 1 Antibody (3C1Q3)**

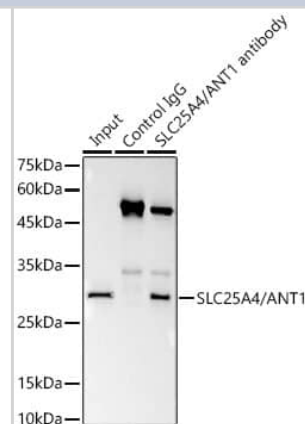
Product Information	
<b>Unit Size</b>	100 ul
<b>Concentration</b>	Please see the vial label for concentration. If unlisted please contact technical services.
<b>Storage</b>	Store at -20C. Avoid freeze-thaw cycles.
<b>Clonality</b>	Monoclonal
<b>Clone</b>	3C1Q3
<b>Preservative</b>	0.02% Sodium Azide
<b>Isotype</b>	IgG
<b>Purity</b>	Affinity purified
<b>Buffer</b>	PBS (pH 7.3), 50% glycerol, 0.05% BSA
<b>Target Molecular Weight</b>	33 kDa

Product Description	
<b>Description</b>	Novus Biologicals Rabbit Adenine Nucleotide Translocase 1 Antibody (3C1Q3) (NBP3-35061) is a monoclonal antibody validated for use in WB, ELISA, ICC/IF and IP. All Novus Biologicals antibodies are covered by our 100% guarantee.
<b>Host</b>	Rabbit
<b>Gene ID</b>	291
<b>Gene Symbol</b>	SLC25A4
<b>Species</b>	Human, Mouse, Rat
<b>Immunogen</b>	A synthetic peptide corresponding to a sequence within amino acids 100-200 of human Adenine Nucleotide Translocase 1 (NP_001142.2).  Sequence: LGGVDRHKQFWRYFAGNLSGGAAGATSLCFVYPLDFARTRLAADVKGKAAQ REFHGLGDCIIKIFKSDGLRGLYQGFNVSVQGIIIYRAAYFGVYDTAKG

Product Application Details	
<b>Applications</b>	Western Blot, ELISA, Immunocytochemistry/ Immunofluorescence, Immunoprecipitation
<b>Recommended Dilutions</b>	Western Blot 1:500 - 1:1000, ELISA, Immunocytochemistry/ Immunofluorescence 1:50 - 1:200, Immunoprecipitation 0.5ug - 4ug antibody for 200ug - 400ug extracts of whole cells

**Images**

Immunoprecipitation: Adenine Nucleotide Translocase 1 Antibody (3C1Q3) [NBP3-35061] - Immunoprecipitation analysis of 300 ug extracts of 293T cells using 3 ug Adenine Nucleotide Translocase 1 antibody. Western blot was performed from the immunoprecipitate using Adenine Nucleotide Translocase 1 antibody at a dilution of 1:1000.



Western Blot: Adenine Nucleotide Translocase 1 Antibody (3C1Q3) [NBP3-35061] - Western blot analysis of various lysates using [KO Validated] Adenine Nucleotide Translocase 1 Rabbit mAb at 1:1000 dilution.

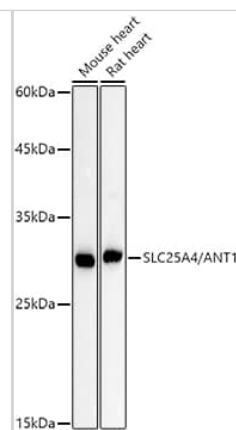
Secondary antibody: HRP-conjugated Goat anti-Rabbit IgG (H+L) at 1:10000 dilution.

Lysates/proteins: 25ug per lane.

Blocking buffer: 3% nonfat dry milk in TBST.

Detection: ECL Basic Kit.

Exposure time: 60s.



Western Blot: Adenine Nucleotide Translocase 1 Antibody (3C1Q3) [NBP3-35061] - Western blot analysis of lysates from MCF7 cells, using [KO Validated] Adenine Nucleotide Translocase 1 Rabbit mAb at 1:1000 dilution.

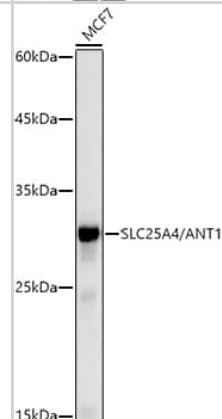
Secondary antibody: HRP-conjugated Goat anti-Rabbit IgG (H+L) at 1:10000 dilution.

Lysates/proteins: 25ug per lane.

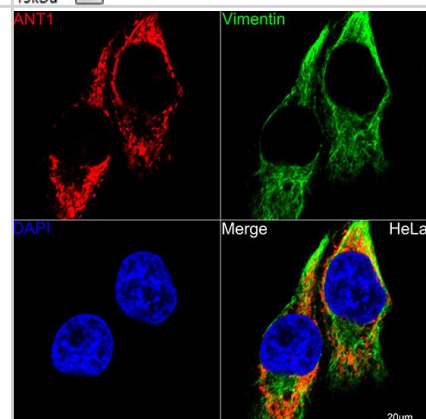
Blocking buffer: 3% nonfat dry milk in TBST.

Detection: ECL Basic Kit.

Exposure time: 10s.



Immunocytochemistry/ Immunofluorescence: Adenine Nucleotide Translocase 1 Antibody (3C1Q3) [NBP3-35061] - Confocal imaging of HeLa cells using [KO Validated] SLC25A4/ANT1 Rabbit mAb. The cells were counterstained with [KO Validated] Vimentin Rabbit mAb (Green). DAPI was used for nuclear staining (blue). Objective: 60x.



Western Blot: Adenine Nucleotide Translocase 1 Antibody (3C1Q3) [NBP3-35061] - Western Blot analysis of lysates from wild type (WT) and Adenine Nucleotide Translocase 1 knockout (KO) 293T cells, using [KO Validated] Adenine Nucleotide Translocase 1 Rabbit mAb at 1:1000 dilution.

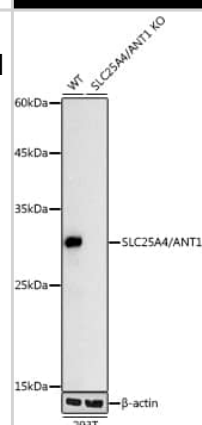
Secondary antibody: HRP-conjugated Goat anti-Rabbit IgG (H+L) at 1:10000 dilution.

Lysates/proteins: 25ug per lane.

Blocking buffer: 3% nonfat dry milk in TBST.

Detection: ECL Basic Kit.

Exposure time: 10s.





### **Novus Biologicals USA**

10730 E. Briarwood Avenue  
Centennial, CO 80112  
USA  
Phone: 303.730.1950  
Toll Free: 1.888.506.6887  
Fax: 303.730.1966  
nb-customerservice@bio-techne.com

### **Bio-Techne Canada**

21 Canmotor Ave  
Toronto, ON M8Z 4E6  
Canada  
Phone: 905.827.6400  
Toll Free: 855.668.8722  
Fax: 905.827.6402  
canada.inquires@bio-techne.com

### **Bio-Techne Ltd**

19 Barton Lane  
Abingdon Science Park  
Abingdon, OX14 3NB, United Kingdom  
Phone: (44) (0) 1235 529449  
Free Phone: 0800 37 34 15  
Fax: (44) (0) 1235 533420  
info.EMEA@bio-techne.com

### **General Contact Information**

www.novusbio.com  
Technical Support: nb-technical@bio-techne.com  
Orders: nb-customerservice@bio-techne.com  
General: novus@novusbio.com

### **Products Related to NBP3-35061-100ul**

---

NBP2-33376H	Blue Marker Antibody (6F4-F6) [HRP]
HAF008	Goat anti-Rabbit IgG Secondary Antibody [HRP]
NB7160	Goat anti-Rabbit IgG (H+L) Secondary Antibody [HRP]
NBP2-24891	Rabbit IgG Isotype Control

---

### **Limitations**

This product is for research use only and is not approved for use in humans or in clinical diagnosis. Primary Antibodies are guaranteed for 1 year from date of receipt.

For more information on our 100% guarantee, please visit [www.novusbio.com/guarantee](http://www.novusbio.com/guarantee)

Earn gift cards/discounts by submitting a review: [www.novusbio.com/reviews/submit/NBP3-35061](http://www.novusbio.com/reviews/submit/NBP3-35061)

Earn gift cards/discounts by submitting a publication using this product:  
[www.novusbio.com/publications](http://www.novusbio.com/publications)

