

Product Datasheet

IRIS11 Prestained Protein Ladder NBP3-33168

Unit Size: 500 ul

Store at 4C short term. Store at -20C long term. Avoid freeze-thaw cycles.

www.novusbio.com



technical@novusbio.com

Protocols, Publications, Related Products, Reviews, Research Tools and Images at:
www.novusbio.com/NBP3-33168

Updated 11/13/2024 v.20.1

Earn rewards for product
reviews and publications.

Submit a publication at www.novusbio.com/publications

Submit a review at www.novusbio.com/reviews/destination/NBP3-33168



NBP3-33168**IRIS11 Prestained Protein Ladder**

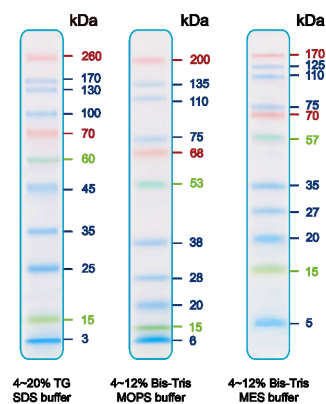
Product Information	
Unit Size	500 ul
Concentration	Please see the protocols for proper use of this product. If no protocol is available, contact technical services for assistance.
Storage	Store at 4C short term. Store at -20C long term. Avoid freeze-thaw cycles.
Buffer	20 mM Trisphosphate at pH 7.5, 2% SDS, 0.2 mM Dithiothreitol, 3.6 M Urea, and 15% (v/v) Glycerol.

Product Description	
Description	<p>The IRIS11 Prestained Protein Ladder is a combination of 11 pre-stained proteins with molecular weights from 3 to 260 kDa. The 11 recombinant proteins are covalently coupled with blue chromophore, while 2 red bands at 70 kDa and 260 kDa, a green band at 15 kDa and a newly designed peacock green band at 60 kDa serve as reference bands. The IRIS11 Prestained Protein Ladder keeps track of the size and separation of proteins during SDS-polyacrylamide gel electrophoresis, approximating the target protein size and validating the Western transfer efficiency on PVDF, nylon, or nitrocellulose membranes.</p> <p>(11 pre-stained bands, 3-260 kDa)</p>

Product Application Details	
Applications	Western Blot
Recommended Dilutions	Western Blot
Application Notes	3ul or 5ul per loading for clear visualization during electrophoresis on 15-well or 10-well mini-gel, respectively. 2.5ul per well for general Western transferring.

Images

Western Blot: IRIS11 Prestained Protein Ladder [NBP3-33168] - The IRIS11 Prestained Protein Ladder is a combination of 11 pre-stained proteins with molecular weights from 3 to 260 kDa. The 11 recombinant proteins are covalently coupled with blue chromophore, while 2 red bands at 70 kDa and 260 kDa, a green band at 15 kDa and a newly designed peacock green band at 60 kDa serve as reference bands. The IRIS11 Prestained Protein Ladder keeps track of the size and separation of proteins during SDS-polyacrylamide gel electrophoresis, approximating the target protein size and validating the Western transfer efficiency on PVDF, nylon, or nitrocellulose membranes.





Novus Biologicals USA

10730 E. Briarwood Avenue
Centennial, CO 80112
USA
Phone: 303.730.1950
Toll Free: 1.888.506.6887
Fax: 303.730.1966
nb-customerservice@bio-techne.com

Bio-Techne Canada

21 Canmotor Ave
Toronto, ON M8Z 4E6
Canada
Phone: 905.827.6400
Toll Free: 855.668.8722
Fax: 905.827.6402
canada.inquires@bio-techne.com

Bio-Techne Ltd

19 Barton Lane
Abingdon Science Park
Abingdon, OX14 3NB, United Kingdom
Phone: (44) (0) 1235 529449
Free Phone: 0800 37 34 15
Fax: (44) (0) 1235 533420
info.EMEA@bio-techne.com

General Contact Information

www.novusbio.com
Technical Support: nb-technical@bio-
techne.com
Orders: nb-customerservice@bio-techne.com
General: novus@novusbio.com

Limitations

This product is for research use only and is not approved for use in humans or in clinical diagnosis. Support products are guaranteed for 6 months from date of receipt.

For more information on our 100% guarantee, please visit www.novusbio.com/guarantee

Earn gift cards/discounts by submitting a review: www.novusbio.com/reviews/submit/NBP3-33168

Earn gift cards/discounts by submitting a publication using this product:
www.novusbio.com/publications

