

# Product Datasheet

## Sodium Potassium ATPase Alpha 1 Antibody (ST0533) NBP3-33143

Unit Size: 100 ul

Store at 4C short term. Aliquot and store at -20C long term. Avoid freeze-thaw cycles.

[www.novusbio.com](http://www.novusbio.com)



[technical@novusbio.com](mailto:technical@novusbio.com)

Protocols, Publications, Related Products, Reviews, Research Tools and Images at:  
[www.novusbio.com/NBP3-33143](http://www.novusbio.com/NBP3-33143)

Updated 9/9/2025 v.20.1

Earn rewards for product  
reviews and publications.

Submit a publication at [www.novusbio.com/publications](http://www.novusbio.com/publications)

Submit a review at [www.novusbio.com/reviews/destination/NBP3-33143](http://www.novusbio.com/reviews/destination/NBP3-33143)



**NBP3-33143****Sodium Potassium ATPase Alpha 1 Antibody (ST0533)**

Product Information	
Unit Size	100 ul
Concentration	1 mg/ml
Storage	Store at 4C short term. Aliquot and store at -20C long term. Avoid freeze-thaw cycles.
Clonality	Monoclonal
Clone	ST0533
Preservative	0.05% Sodium Azide
Isotype	IgG
Purity	Protein A purified
Buffer	1*TBS (pH7.4), 0.05% BSA and 40% Glycerol
Target Molecular Weight	113 kDa

Product Description	
Description	Novus Biologicals Rabbit Sodium Potassium ATPase Alpha 1 Antibody (ST0533) (NBP3-33143) is a recombinant monoclonal antibody validated for use in IHC, WB and ICC/IF. All Novus Biologicals antibodies are covered by our 100% guarantee.
Host	Rabbit
Gene ID	476
Gene Symbol	ATP1A1
Species	Human, Mouse, Rat
Immunogen	Synthetic peptide within Human Sodium Potassium ATPase Alpha 1 aa 39-83 / 1023. (Uniprot: P05023)

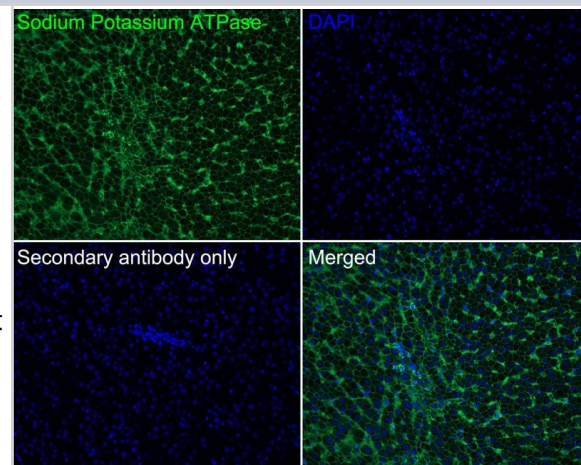
Product Application Details	
Applications	Western Blot, Immunohistochemistry-Paraffin, Immunocytochemistry/Immunofluorescence, Immunohistochemistry
Recommended Dilutions	Western Blot 1:50000-1:100000, Immunohistochemistry, Immunocytochemistry/Immunofluorescence 1:500-1:200, Immunohistochemistry-Paraffin 1:50-1:5000

**Images**

Immunohistochemistry: Sodium Potassium ATPase Alpha 1 Antibody (ST0533) [NBP3-33143] - Immunofluorescence analysis of paraffin-embedded human liver tissue labeling Sodium Potassium ATPase Alpha 1 with Rabbit anti-Sodium Potassium ATPase Alpha 1 antibody (NBP3-33143) at 1/200 dilution.

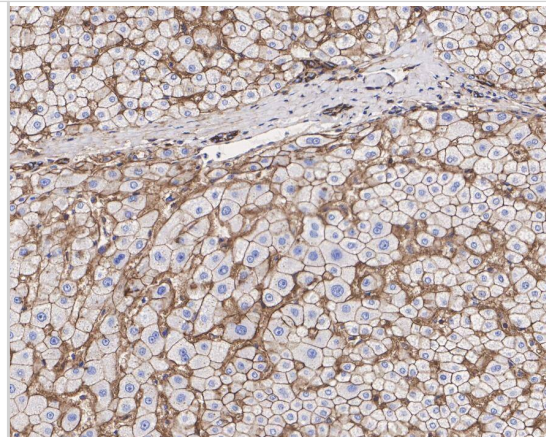
The section was pre-treated using heat mediated antigen retrieval with Tris-EDTA buffer (pH 9.0) for 20 minutes. The tissues were blocked in 10% negative goat serum for 1 hour at room temperature, washed with PBS, and then probed with the primary antibody (NBP3-33143, green) at 1/200 dilution overnight at 4 °C, washed with PBS.

Goat Anti-Rabbit IgG H&L (iFluor™ 488) was used as the secondary antibody at 1/1,000 dilution. Nuclei were counterstained with DAPI (blue).



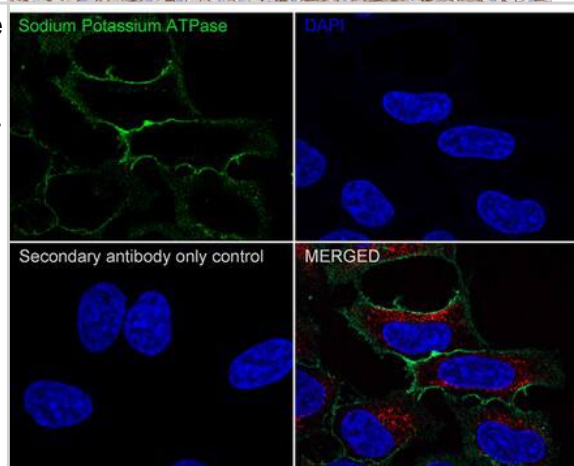
**Immunohistochemistry: Sodium Potassium ATPase Alpha 1 Antibody (ST0533) [NBP3-33143]** - Immunohistochemical analysis of paraffin-embedded human liver tissue with Rabbit anti-Sodium Potassium ATPase Alpha 1 antibody (NBP3-33143) at 1/2,000 dilution.

The section was pre-treated using heat mediated antigen retrieval with Tris-EDTA buffer (pH 9.0) for 20 minutes. The tissues were blocked in 1% BSA for 20 minutes at room temperature, washed with ddH<sub>2</sub>O and PBS, and then probed with the primary antibody (NBP3-33143) at 1/2,000 dilution for 1 hour at room temperature. The detection was performed using an HRP conjugated compact polymer system. DAB was used as the chromogen. Tissues were counterstained with hematoxylin and mounted with DPX.



**Immunocytochemistry/ Immunofluorescence: Sodium Potassium ATPase Alpha 1 Antibody (ST0533) [NBP3-33143]** - Immunocytochemistry analysis of HeLa cells labeling Sodium Potassium ATPase Alpha 1 with Rabbit anti-Sodium Potassium ATPase Alpha 1 antibody (NBP3-33143) at 1/500 dilution.

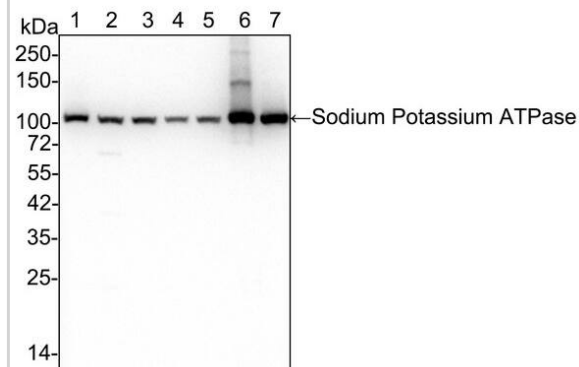
Cells were fixed in 100% precooled methanol for 5 minutes at room temperature, then blocked with 1% BSA in 10% negative goat serum for 1 hour at room temperature. Cells were then incubated with Rabbit anti-Sodium Potassium ATPase antibody at 1/500 dilution in 1% BSA in PBST overnight at 4 °C. Goat Anti-Rabbit IgG H&L (iFluor™ 488) was used as the secondary antibody at 1/1,000 dilution. PBS instead of the primary antibody was used as the secondary antibody only control. Nuclear DNA was labelled in blue with DAPI.



Beta tubulin (red) was stained at 1/100 dilution overnight at +4°C. Goat Anti-Mouse IgG H&L (iFluor™ 594) was used as the secondary antibody at 1/1,000 dilution.

**Western Blot: Sodium Potassium ATPase Alpha 1 Antibody (ST0533) [NBP3-33143]** - Western blot analysis of Sodium Potassium ATPase Alpha 1 on different lysates with Rabbit anti-Sodium Potassium ATPase Alpha 1 antibody (NBP3-33143) at 1/100,000 dilution.

Lane 1: HeLa cell lysate (no heat) (20 µg/Lane)  
 Lane 2: HT-29 cell lysate (no heat) (20 µg/Lane)  
 Lane 3: HepG2 cell lysate (no heat) (20 µg/Lane)  
 Lane 4: NIH/3T3 cell lysate (no heat) (20 µg/Lane)  
 Lane 5: L-929 cell lysate (no heat) (20 µg/Lane)  
 Lane 6: Mouse brain tissue lysate (no heat) (20 µg/Lane)  
 Lane 7: Rat brain tissue lysate (no heat) (20 µg/Lane)



Predicted band size: 113 kDa  
 Observed band size: 100 kDa

Exposure time: 20 seconds;

4-20% SDS-PAGE gel.

Proteins were transferred to a PVDF membrane and blocked with 5% NFDN/TBST for 1 hour at room temperature. The primary antibody at 1/100,000 dilution was used in 5% NFDN/TBST at 4°C overnight. Goat Anti-Rabbit IgG - HRP Secondary Antibody at 1:50,000 dilution was used for 1 hour at room temperature.



### **Novus Biologicals USA**

10730 E. Briarwood Avenue  
Centennial, CO 80112  
USA  
Phone: 303.730.1950  
Toll Free: 1.888.506.6887  
Fax: 303.730.1966  
nb-customerservice@bio-techne.com

### **Bio-Techne Canada**

21 Canmotor Ave  
Toronto, ON M8Z 4E6  
Canada  
Phone: 905.827.6400  
Toll Free: 855.668.8722  
Fax: 905.827.6402  
canada.inquires@bio-techne.com

### **Bio-Techne Ltd**

19 Barton Lane  
Abingdon Science Park  
Abingdon, OX14 3NB, United Kingdom  
Phone: (44) (0) 1235 529449  
Free Phone: 0800 37 34 15  
Fax: (44) (0) 1235 533420  
info.EMEA@bio-techne.com

### **General Contact Information**

www.novusbio.com  
Technical Support: nb-technical@bio-techne.com  
Orders: nb-customerservice@bio-techne.com  
General: novus@novusbio.com

### **Products Related to NBP3-33143**

---

NBP2-33376H	Blue Marker Antibody (6F4-F6) [HRP]
HAF008	Goat anti-Rabbit IgG Secondary Antibody [HRP]
NB7160	Goat anti-Rabbit IgG (H+L) Secondary Antibody [HRP]
NBP2-24891	Rabbit IgG Isotype Control

---

### **Limitations**

This product is for research use only and is not approved for use in humans or in clinical diagnosis. Primary Antibodies are guaranteed for 1 year from date of receipt.

For more information on our 100% guarantee, please visit [www.novusbio.com/guarantee](http://www.novusbio.com/guarantee)

Earn gift cards/discounts by submitting a review: [www.novusbio.com/reviews/submit/NBP3-33143](http://www.novusbio.com/reviews/submit/NBP3-33143)

Earn gift cards/discounts by submitting a publication using this product:  
[www.novusbio.com/publications](http://www.novusbio.com/publications)

