

# Product Datasheet

## YTHD1 Antibody (PSH0-23)

### NBP3-33109

Unit Size: 100 ul

Store at 4C short term. Aliquot and store at -20C long term. Avoid freeze-thaw cycles.

[www.novusbio.com](http://www.novusbio.com)



[technical@novusbio.com](mailto:technical@novusbio.com)

Protocols, Publications, Related Products, Reviews, Research Tools and Images at:  
[www.novusbio.com/NBP3-33109](http://www.novusbio.com/NBP3-33109)

Updated 9/9/2025 v.20.1

Earn rewards for product  
reviews and publications.

Submit a publication at [www.novusbio.com/publications](http://www.novusbio.com/publications)

Submit a review at [www.novusbio.com/reviews/destination/NBP3-33109](http://www.novusbio.com/reviews/destination/NBP3-33109)



**NBP3-33109**

YTHD1 Antibody (PSH0-23)

Product Information	
Unit Size	100 ul
Concentration	1 mg/ml
Storage	Store at 4C short term. Aliquot and store at -20C long term. Avoid freeze-thaw cycles.
Clonality	Monoclonal
Clone	PSH0-23
Preservative	0.05% Sodium Azide
Isotype	IgG
Purity	Protein A purified
Buffer	PBS (pH7.4), 0.1% BSA and 40% Glycerol
Target Molecular Weight	61 kDa

Product Description	
Description	Novus Biologicals Rabbit YTHD1 Antibody (PSH0-23) (NBP3-33109) is a recombinant monoclonal antibody validated for use in IHC, WB and Flow. All Novus Biologicals antibodies are covered by our 100% guarantee.
Host	Rabbit
Gene ID	54915
Gene Symbol	YTHDF1
Species	Human, Mouse, Rat
Immunogen	Recombinant protein within human YTHD1 aa 300-559. (Uniprot: Q9BYJ9)

Product Application Details	
Applications	Western Blot, Immunohistochemistry-Paraffin, Flow Cytometry, Immunohistochemistry
Recommended Dilutions	Western Blot 1:1000, Flow Cytometry 1ug/mL, Immunohistochemistry, Immunohistochemistry-Paraffin 1:1000



## Images

Western Blot: YTHD1 Antibody (PSH0-23) [NBP3-33109] - Western blot analysis of YTHD1 on different lysates with Rabbit anti-YTHD1 antibody (NBP3-33109) at 1/1,000 dilution.

Lane 1: HepG2 cell lysate (10 ug/Lane)  
 Lane 2: Hela cell lysate (10 ug/Lane)  
 Lane 3: 293T cell lysate (10 ug/Lane)  
 Lane 4: MCF-7 cell lysate (10 ug/Lane)  
 Lane 5: NIH/3T3 cell lysate (10 ug/Lane)  
 Lane 6: PC-12 cell lysate (10 ug/Lane)  
 Lane 7: HCT116 cell lysate (10 ug/Lane)  
 Lane 8: Mouse testis liver tissue lysate (20 ug/Lane)  
 Lane 9: Rat testis tissue lysate (20 ug/Lane)  
 Lane 10: Mouse brain tissue lysate (20 ug/Lane)  
 Lane 11: Rat brain tissue lysate (20 ug/Lane)

Predicted band size: 61 kDa  
 Observed band size: 69 kDa

Exposure time: 5 minutes;

10% SDS-PAGE gel.

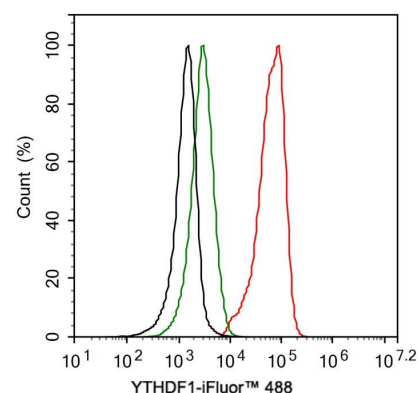
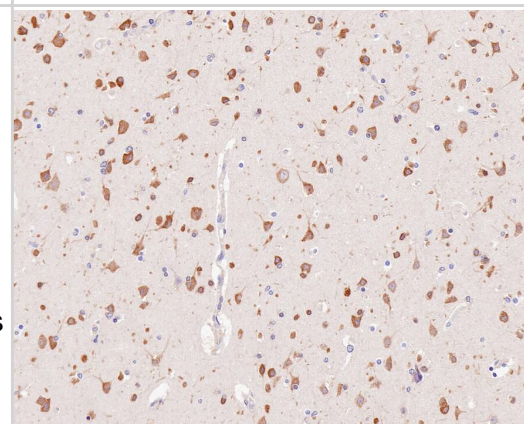
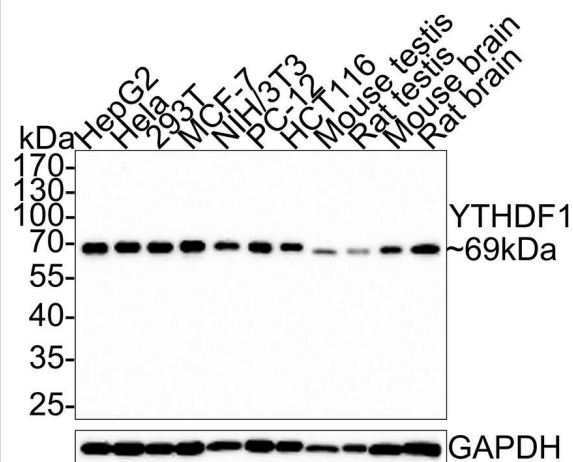
Proteins were transferred to a PVDF membrane and blocked with 5% NFDM/TBST for 1 hour at room temperature. The primary antibody (NBP3-33109) at 1/1,000 dilution was used in 5% NFDM/TBST at room temperature for 2 hours. Goat Anti-Rabbit IgG - HRP Secondary Antibody at 1:300,000 dilution was used for 1 hour at room temperature.

Immunohistochemistry: YTHD1 Antibody (PSH0-23) [NBP3-33109] - Immunohistochemical analysis of paraffin-embedded human brain tissue with Rabbit anti-YTHD1 antibody (NBP3-33109) at 1/1,000 dilution.

The section was pre-treated using heat mediated antigen retrieval with Tris-EDTA buffer (pH 9.0) for 20 minutes. The tissues were blocked in 1% BSA for 20 minutes at room temperature, washed with ddH<sub>2</sub>O and PBS, and then probed with the primary antibody (NBP3-33109) at 1/1,000 dilution for 1 hour at room temperature. The detection was performed using an HRP conjugated compact polymer system. DAB was used as the chromogen. Tissues were counterstained with hematoxylin and mounted with DPX.

Flow Cytometry: YTHD1 Antibody (PSH0-23) [NBP3-33109] - Flow cytometric analysis of 293 cells labeling YTHD1.

Cells were fixed and permeabilized. Then stained with the primary antibody (NBP3-33109, 1ug/ml) (red) compared with Rabbit IgG Isotype Control (green). After incubation of the primary antibody at +4°C for an hour, the cells were stained with a iFluor™ 488 conjugate-Goat anti-Rabbit IgG Secondary antibody at 1/1,000 dilution for 30 minutes at +4°C. Unlabelled sample was used as a control (cells without incubation with primary antibody; black).





### **Novus Biologicals USA**

10730 E. Briarwood Avenue  
Centennial, CO 80112  
USA  
Phone: 303.730.1950  
Toll Free: 1.888.506.6887  
Fax: 303.730.1966  
nb-customerservice@bio-techne.com

### **Bio-Techne Canada**

21 Canmotor Ave  
Toronto, ON M8Z 4E6  
Canada  
Phone: 905.827.6400  
Toll Free: 855.668.8722  
Fax: 905.827.6402  
canada.inquires@bio-techne.com

### **Bio-Techne Ltd**

19 Barton Lane  
Abingdon Science Park  
Abingdon, OX14 3NB, United Kingdom  
Phone: (44) (0) 1235 529449  
Free Phone: 0800 37 34 15  
Fax: (44) (0) 1235 533420  
info.EMEA@bio-techne.com

### **General Contact Information**

www.novusbio.com  
Technical Support: nb-technical@bio-techne.com  
Orders: nb-customerservice@bio-techne.com  
General: novus@novusbio.com

### **Products Related to NBP3-33109**

---

NBP2-33376H	Blue Marker Antibody (6F4-F6) [HRP]
HAF008	Goat anti-Rabbit IgG Secondary Antibody [HRP]
NB7160	Goat anti-Rabbit IgG (H+L) Secondary Antibody [HRP]
NBP2-24891	Rabbit IgG Isotype Control

---

### **Limitations**

This product is for research use only and is not approved for use in humans or in clinical diagnosis. Primary Antibodies are guaranteed for 1 year from date of receipt.

For more information on our 100% guarantee, please visit [www.novusbio.com/guarantee](http://www.novusbio.com/guarantee)

Earn gift cards/discounts by submitting a review: [www.novusbio.com/reviews/submit/NBP3-33109](http://www.novusbio.com/reviews/submit/NBP3-33109)

Earn gift cards/discounts by submitting a publication using this product:  
[www.novusbio.com/publications](http://www.novusbio.com/publications)

