

# Product Datasheet

## PSMC6 Antibody (PSH0-12)

### NBP3-32866

Unit Size: 100 ul

Store at 4C short term. Aliquot and store at -20C long term. Avoid freeze-thaw cycles.

[www.novusbio.com](http://www.novusbio.com)



[technical@novusbio.com](mailto:technical@novusbio.com)

Protocols, Publications, Related Products, Reviews, Research Tools and Images at:  
[www.novusbio.com/NBP3-32866](http://www.novusbio.com/NBP3-32866)

Updated 9/9/2025 v.20.1

Earn rewards for product  
reviews and publications.

Submit a publication at [www.novusbio.com/publications](http://www.novusbio.com/publications)

Submit a review at [www.novusbio.com/reviews/destination/NBP3-32866](http://www.novusbio.com/reviews/destination/NBP3-32866)



**NBP3-32866****PSMC6 Antibody (PSH0-12)**

<b>Product Information</b>	
<b>Unit Size</b>	100 ul
<b>Concentration</b>	1 mg/ml
<b>Storage</b>	Store at 4C short term. Aliquot and store at -20C long term. Avoid freeze-thaw cycles.
<b>Clonality</b>	Monoclonal
<b>Clone</b>	PSH0-12
<b>Preservative</b>	0.05% Sodium Azide
<b>Isotype</b>	IgG
<b>Purity</b>	Protein A purified
<b>Buffer</b>	PBS (pH7.4), 0.1% BSA and 40% Glycerol
<b>Target Molecular Weight</b>	44 kDa
<b>Product Description</b>	
<b>Description</b>	Novus Biologicals Rabbit PSMC6 Antibody (PSH0-12) (NBP3-32866) is a recombinant monoclonal antibody validated for use in IHC, WB and Flow. All Novus Biologicals antibodies are covered by our 100% guarantee.
<b>Host</b>	Rabbit
<b>Gene ID</b>	5706
<b>Gene Symbol</b>	PSMC6
<b>Species</b>	Human, Mouse, Rat
<b>Immunogen</b>	Recombinant protein within human PSMC6 aa 1-200 / 389. (Uniprot: P62333)
<b>Product Application Details</b>	
<b>Applications</b>	Western Blot, Immunohistochemistry-Paraffin, Flow Cytometry, Immunohistochemistry
<b>Recommended Dilutions</b>	Western Blot 1:1000, Flow Cytometry 1:500-1:1000, Immunohistochemistry, Immunohistochemistry-Paraffin 1:400

## Images

**Western Blot: PSMC6 Antibody (PSH0-12) [NBP3-32866]** - Western blot analysis of PSMC6 on different lysates with Rabbit anti-PSMC6 antibody (NBP3-32866) at 1/1,000 dilution.

Lane 1: Hela cell lysate (10 ug/Lane)  
 Lane 2: 293T cell lysate (10 ug/Lane)  
 Lane 3: SH-SY5Y cell lysate (10 ug/Lane)  
 Lane 4: HepG2 cell lysate (10 ug/Lane)  
 Lane 5: PC-12 cell lysate (10 ug/Lane)  
 Lane 6: NIH/3T3 cell lysate (10 ug/Lane)  
 Lane 7: Mouse kidney tissue lysate (20 ug/Lane)  
 Lane 8: Rat kidney tissue lysate (20 ug/Lane)  
 Lane 9: Rat brain tissue lysate (20 ug/Lane)

Predicted band size: 44 kDa  
 Observed band size: 44 kDa

Exposure time: 2 minutes;

10% SDS-PAGE gel.

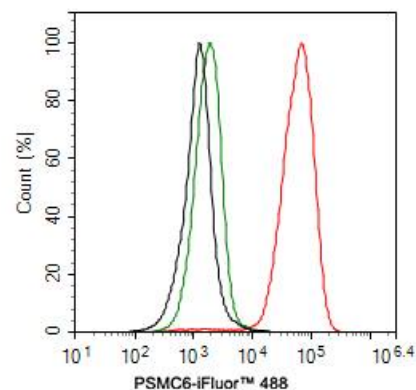
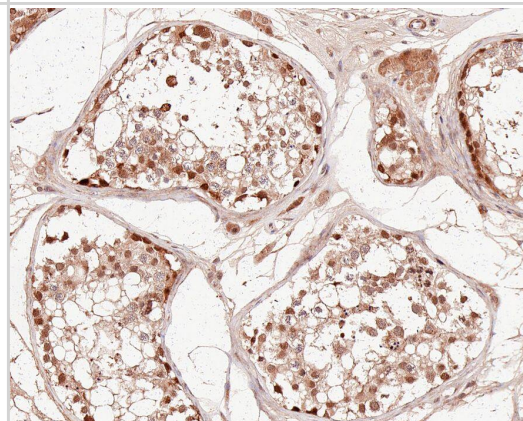
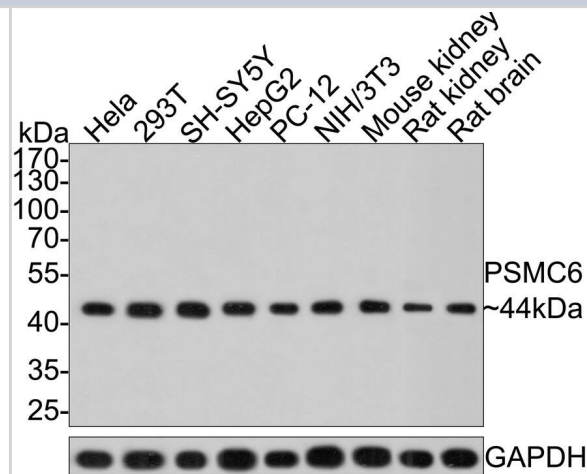
Proteins were transferred to a PVDF membrane and blocked with 5% NFDm/TBST for 1 hour at room temperature. The primary antibody (NBP3-32866) at 1/1,000 dilution was used in 5% NFDm/TBST at room temperature for 2 hours. Goat Anti-Rabbit IgG - HRP Secondary Antibody at 1:300,000 dilution was used for 1 hour at room temperature.

**Immunohistochemistry: PSMC6 Antibody (PSH0-12) [NBP3-32866]** - Immunohistochemical analysis of paraffin-embedded human testis tissue with Rabbit anti-PSMC6 antibody (NBP3-32866) at 1/400 dilution.

The section was pre-treated using heat mediated antigen retrieval with sodium citrate buffer (pH 6.0) for 2 minutes. The tissues were blocked in 1% BSA for 20 minutes at room temperature, washed with ddH<sub>2</sub>O and PBS, and then probed with the primary antibody (NBP3-32866) at 1/400 dilution for 1 hour at room temperature. The detection was performed using an HRP conjugated compact polymer system. DAB was used as the chromogen. Tissues were counterstained with hematoxylin and mounted with DPX.

**Flow Cytometry: PSMC6 Antibody (PSH0-12) [NBP3-32866]** - Flow cytometric analysis of SH-SY5Y cells labeling PSMC6.

Cells were fixed and permeabilized. Then stained with the primary antibody (NBP3-32866, 1ug/ml) (red) compared with Rabbit IgG Isotype Control (green). After incubation of the primary antibody at +4°C for an hour, the cells were stained with a iFluor™ 488 conjugate-Goat anti-Rabbit IgG Secondary antibody at 1/1,000 dilution for 30 minutes at +4°C. Unlabelled sample was used as a control (cells without incubation with primary antibody; black).





### **Novus Biologicals USA**

10730 E. Briarwood Avenue  
Centennial, CO 80112  
USA  
Phone: 303.730.1950  
Toll Free: 1.888.506.6887  
Fax: 303.730.1966  
nb-customerservice@bio-techne.com

### **Bio-Techne Canada**

21 Canmotor Ave  
Toronto, ON M8Z 4E6  
Canada  
Phone: 905.827.6400  
Toll Free: 855.668.8722  
Fax: 905.827.6402  
canada.inquires@bio-techne.com

### **Bio-Techne Ltd**

19 Barton Lane  
Abingdon Science Park  
Abingdon, OX14 3NB, United Kingdom  
Phone: (44) (0) 1235 529449  
Free Phone: 0800 37 34 15  
Fax: (44) (0) 1235 533420  
info.EMEA@bio-techne.com

### **General Contact Information**

www.novusbio.com  
Technical Support: nb-technical@bio-techne.com  
Orders: nb-customerservice@bio-techne.com  
General: novus@novusbio.com

### **Products Related to NBP3-32866**

---

NBP2-33376H	Blue Marker Antibody (6F4-F6) [HRP]
HAF008	Goat anti-Rabbit IgG Secondary Antibody [HRP]
NB7160	Goat anti-Rabbit IgG (H+L) Secondary Antibody [HRP]
NBP2-24891	Rabbit IgG Isotype Control

---

### **Limitations**

This product is for research use only and is not approved for use in humans or in clinical diagnosis. Primary Antibodies are guaranteed for 1 year from date of receipt.

For more information on our 100% guarantee, please visit [www.novusbio.com/guarantee](http://www.novusbio.com/guarantee)

Earn gift cards/discounts by submitting a review: [www.novusbio.com/reviews/submit/NBP3-32866](http://www.novusbio.com/reviews/submit/NBP3-32866)

Earn gift cards/discounts by submitting a publication using this product:  
[www.novusbio.com/publications](http://www.novusbio.com/publications)

