

Product Datasheet

Ribosomal Protein S6/RPS6 [p Ser240, p Ser244] Antibody (PS00-65) NBP3-32797

Unit Size: 100 ul

Store at 4C short term. Aliquot and store at -20C long term. Avoid freeze-thaw cycles.

www.novusbio.com



technical@novusbio.com

Protocols, Publications, Related Products, Reviews, Research Tools and Images at:
www.novusbio.com/NBP3-32797

Updated 9/9/2025 v.20.1

Earn rewards for product
reviews and publications.

Submit a publication at www.novusbio.com/publications

Submit a review at www.novusbio.com/reviews/destination/NBP3-32797



NBP3-32797

Ribosomal Protein S6/RPS6 [p Ser240, p Ser244] Antibody (PS00-65)

Product Information	
Unit Size	100 ul
Concentration	1 mg/ml
Storage	Store at 4C short term. Aliquot and store at -20C long term. Avoid freeze-thaw cycles.
Clonality	Monoclonal
Clone	PS00-65
Preservative	0.05% Sodium Azide
Isotype	IgG
Purity	Protein A purified
Buffer	PBS (pH7.4), 0.1% BSA and 40% Glycerol
Target Molecular Weight	29 kDa

Product Description	
Description	Novus Biologicals Rabbit Ribosomal Protein S6/RPS6 [p Ser240, p Ser244] Antibody (PS00-65) (NBP3-32797) is a recombinant monoclonal antibody validated for use in IHC, WB and ICC/IF. All Novus Biologicals antibodies are covered by our 100% guarantee.
Host	Rabbit
Gene ID	6194
Gene Symbol	RPS6
Species	Human, Mouse, Rat
Immunogen	Synthetic peptide within Human Ribosomal Protein S6/RPS6 aa 200 to the C-terminus (p Ser 240, p Ser 244). (Uniprot: P62753)

Product Application Details	
Applications	Western Blot, Immunohistochemistry-Paraffin, Immunocytochemistry/Immunofluorescence, Immunohistochemistry
Recommended Dilutions	Western Blot 1:1000, Immunohistochemistry, Immunocytochemistry/Immunofluorescence 1:50, Immunohistochemistry-Paraffin 1:5000-10000



Images

Western Blot: Ribosomal Protein S6/RPS6 [p Ser240, p Ser244] Antibody (PS00-65) [NBP3-32797] - Western blot analysis of Ribosomal Protein S6/RPS6 on A431 cell lysates with Rabbit anti-Ribosomal Protein S6/RPS6 antibody (NBP3-32797) at 1/1,000 dilution.

Lysates/proteins at 10 ug/Lane.

Predicted band size: 29 kDa
Observed band size: 33 kDa

Exposure time: 2 minutes;

12% SDS-PAGE gel.

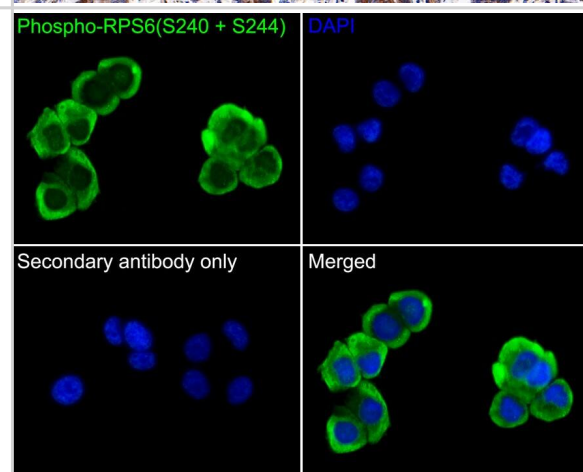
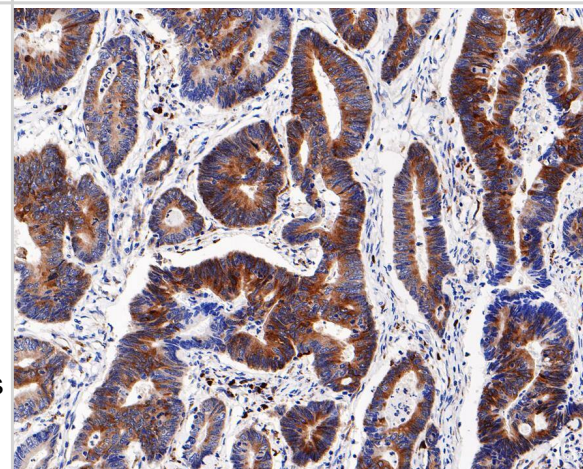
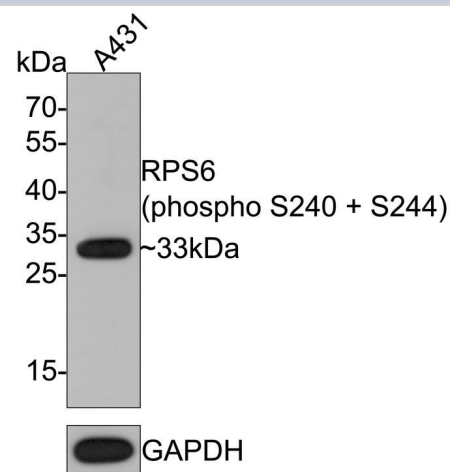
Proteins were transferred to a PVDF membrane and blocked with 5% NFDm/TBST for 1 hour at room temperature. The primary antibody (NBP3-32797) at 1/1,000 dilution was used in 5% NFDm/TBST at room temperature for 2 hours. Goat Anti-Rabbit IgG - HRP Secondary Antibody at 1:300,000 dilution was used for 1 hour at room temperature.

Immunohistochemistry: Ribosomal Protein S6/RPS6 [p Ser240, p Ser244] Antibody (PS00-65) [NBP3-32797] - Immunohistochemical analysis of paraffin-embedded human colon carcinoma tissue with Rabbit anti-Ribosomal Protein S6/RPS6 antibody (NBP3-32797) at 1/5,000 dilution.

The section was pre-treated using heat mediated antigen retrieval with sodium citrate buffer (pH 6.0) for 2 minutes. The tissues were blocked in 1% BSA for 20 minutes at room temperature, washed with ddH₂O and PBS, and then probed with the primary antibody (NBP3-32797) at 1/5,000 dilution for 1 hour at room temperature. The detection was performed using an HRP conjugated compact polymer system. DAB was used as the chromogen. Tissues were counterstained with hematoxylin and mounted with DPX.

Immunocytochemistry/ Immunofluorescence: Ribosomal Protein S6/RPS6 [p Ser240, p Ser244] Antibody (PS00-65) [NBP3-32797] - Immunocytochemistry analysis of SK-Br-3 cells labeling Ribosomal Protein S6/RPS6 with Rabbit anti-Ribosomal Protein S6/RPS6 antibody (NBP3-32797) at 1/50 dilution.

Cells were fixed in 4% paraformaldehyde for 10 minutes at 37 °C, permeabilized with 0.05% Triton X-100 in PBS for 20 minutes, and then blocked with 2% negative goat serum for 30 minutes at room temperature. Cells were then incubated with Rabbit anti-Ribosomal Protein S6/RPS6 antibody (NBP3-32797) at 1/50 dilution in 2% negative goat serum overnight at 4 °C. Goat Anti-Rabbit IgG H&L (iFluor™ 488) was used as the secondary antibody at 1/1,000 dilution. PBS instead of the primary antibody was used as the secondary antibody only control. Nuclear DNA was labelled in blue with DAPI.





Novus Biologicals USA

10730 E. Briarwood Avenue
Centennial, CO 80112
USA
Phone: 303.730.1950
Toll Free: 1.888.506.6887
Fax: 303.730.1966
nb-customerservice@bio-techne.com

Bio-Techne Canada

21 Canmotor Ave
Toronto, ON M8Z 4E6
Canada
Phone: 905.827.6400
Toll Free: 855.668.8722
Fax: 905.827.6402
canada.inquires@bio-techne.com

Bio-Techne Ltd

19 Barton Lane
Abingdon Science Park
Abingdon, OX14 3NB, United Kingdom
Phone: (44) (0) 1235 529449
Free Phone: 0800 37 34 15
Fax: (44) (0) 1235 533420
info.EMEA@bio-techne.com

General Contact Information

www.novusbio.com
Technical Support: nb-technical@bio-techne.com
Orders: nb-customerservice@bio-techne.com
General: novus@novusbio.com

Products Related to NBP3-32797

NBP2-33376H	Blue Marker Antibody (6F4-F6) [HRP]
HAF008	Goat anti-Rabbit IgG Secondary Antibody [HRP]
NB7160	Goat anti-Rabbit IgG (H+L) Secondary Antibody [HRP]
NBP2-24891	Rabbit IgG Isotype Control

Limitations

This product is for research use only and is not approved for use in humans or in clinical diagnosis. Primary Antibodies are guaranteed for 1 year from date of receipt.

For more information on our 100% guarantee, please visit www.novusbio.com/guarantee

Earn gift cards/discounts by submitting a review: www.novusbio.com/reviews/submit/NBP3-32797

Earn gift cards/discounts by submitting a publication using this product:
www.novusbio.com/publications

