

Product Datasheet

Pyruvate Dehydrogenase E1-alpha subunit [p Ser293] Antibody (JE58-27) NBP3-32787

Unit Size: 100 ul

Store at 4C short term. Aliquot and store at -20C long term. Avoid freeze-thaw cycles.

www.novusbio.com



technical@novusbio.com

Protocols, Publications, Related Products, Reviews, Research Tools and Images at:
www.novusbio.com/NBP3-32787

Updated 9/9/2025 v.20.1

Earn rewards for product
reviews and publications.

Submit a publication at www.novusbio.com/publications

Submit a review at www.novusbio.com/reviews/destination/NBP3-32787



NBP3-32787

Pyruvate Dehydrogenase E1-alpha subunit [p Ser293] Antibody (JE58-27)

Product Information	
Unit Size	100 ul
Concentration	1 mg/ml
Storage	Store at 4C short term. Aliquot and store at -20C long term. Avoid freeze-thaw cycles.
Clonality	Monoclonal
Clone	JE58-27
Preservative	0.05% Sodium Azide
Isotype	IgG
Purity	Protein A purified
Buffer	1*TBS (pH7.4), 0.05% BSA and 40% Glycerol
Target Molecular Weight	43 kDa
Product Description	
Description	Novus Biologicals Rabbit Pyruvate Dehydrogenase E1-alpha subunit [p Ser293] Antibody (JE58-27) (NBP3-32787) is a recombinant monoclonal antibody validated for use in IHC, WB and ICC/IF. All Novus Biologicals antibodies are covered by our 100% guarantee.
Host	Rabbit
Gene ID	5160
Gene Symbol	PDHA1
Species	Human, Mouse, Rat
Immunogen	Synthetic phosphopeptide corresponding to residues surrounding Ser293 of human Pyruvate Dehydrogenase E1-alpha subunit protein. (Uniprot: P08559)
Product Application Details	
Applications	Western Blot, Immunohistochemistry-Paraffin, Immunocytochemistry/Immunofluorescence, Immunohistochemistry
Recommended Dilutions	Western Blot 1:1000, Immunohistochemistry, Immunocytochemistry/Immunofluorescence 1:100, Immunohistochemistry-Paraffin 1:500-1:2000



Images

Western Blot: Pyruvate Dehydrogenase E1-alpha subunit [p Ser293] Antibody (JE58-27) [NBP3-32787] - Western blot analysis of Pyruvate Dehydrogenase E1-alpha subunit on different lysates with Rabbit anti-Pyruvate Dehydrogenase E1-alpha subunit antibody (NBP3-32787) at 1/1,000 dilution.

Lane 1: A549 cell lysate (20 ug/Lane)
 Lane 2: Jurkat cell lysate (20 ug/Lane)
 Lane 3: HepG2 cell lysate (20 ug/Lane)
 Lane 4: HeLa cell lysate (20 ug/Lane)
 Lane 5: HEK-293 cell lysate (20 ug/Lane)
 Lane 6: Human kidney tissue lysate (40 ug/Lane)
 Lane 7: Mouse brain tissue lysate (40 ug/Lane)
 Lane 8: Mouse heart tissue lysate (40 ug/Lane)

Predicted band size: 43 kDa
 Observed band size: 43 kDa

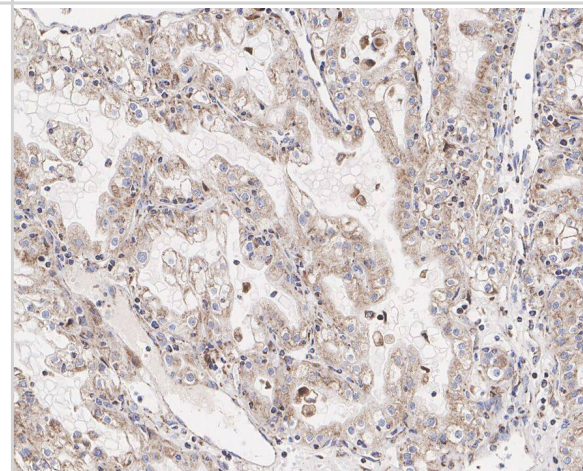
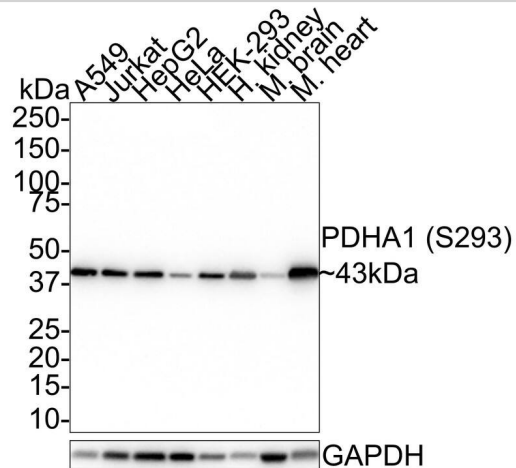
Exposure time: 39 seconds;

4-20% SDS-PAGE gel.

Proteins were transferred to a PVDF membrane and blocked with 5% NFDM/TBST for 1 hour at room temperature. The primary antibody (NBP3-32787) at 1/1,000 dilution was used in 5% NFDM/TBST at room temperature for 2 hours. Goat Anti-Rabbit IgG - HRP Secondary Antibody at 1:100,000 dilution was used for 1 hour at room temperature.

Immunohistochemistry: Pyruvate Dehydrogenase E1-alpha subunit [p Ser293] Antibody (JE58-27) [NBP3-32787] - Immunohistochemical analysis of paraffin-embedded human renal clear cell carcinoma tissue with Rabbit anti-Pyruvate Dehydrogenase E1-alpha subunit antibody (NBP3-32787) at 1/500 dilution.

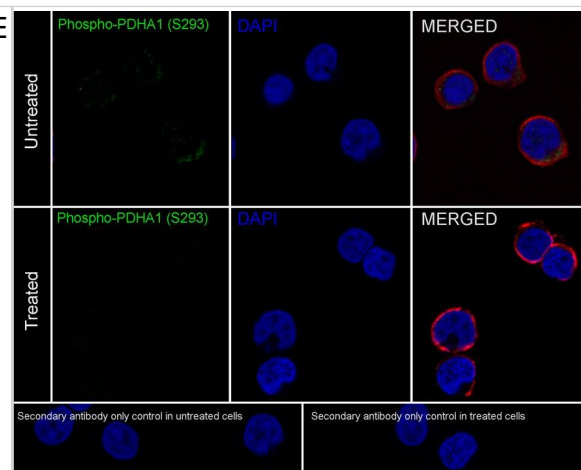
The section was pre-treated using heat mediated antigen retrieval with Tris-EDTA buffer (pH 9.0) for 20 minutes. The tissues were blocked in 1% BSA for 20 minutes at room temperature, washed with ddH₂O and PBS, and then probed with the primary antibody (NBP3-32787) at 1/500 dilution for 1 hour at room temperature. The detection was performed using an HRP conjugated compact polymer system. DAB was used as the chromogen. Tissues were counterstained with hematoxylin and mounted with DPX.



Immunocytochemistry/ Immunofluorescence: Pyruvate Dehydrogenase E1-alpha subunit [p Ser293] Antibody (JE58-27) [NBP3-32787] - Immunocytochemistry analysis of Jurkat cells treated with or without λ pp labeling Pyruvate Dehydrogenase E1-alpha subunit with Rabbit anti-Pyruvate Dehydrogenase E1-alpha subunit antibody (NBP3-32787) at 1/100 dilution.

Cells were fixed in 4% paraformaldehyde for 10 minutes at 37 °C, permeabilized with 0.05% Triton X-100 in PBS for 20 minutes, and then blocked with 2% negative goat serum for 30 minutes at room temperature. Cells were then incubated with Rabbit anti-Pyruvate Dehydrogenase E1-alpha subunit antibody (NBP3-32787) at 1/100 dilution in 2% negative goat serum overnight at 4 °C. Goat Anti-Rabbit IgG H&L (iFluor™ 488) was used as the secondary antibody at 1/1,000 dilution. Nuclear DNA was labelled in blue with DAPI.

Beta tubulin (red) was stained at 1/200 dilution overnight at +4°C. Goat Anti-Mouse IgG H&L (iFluor™ 594) was used as the secondary antibody at 1/1,000 dilution.





Novus Biologicals USA

10730 E. Briarwood Avenue
Centennial, CO 80112
USA
Phone: 303.730.1950
Toll Free: 1.888.506.6887
Fax: 303.730.1966
nb-customerservice@bio-techne.com

Bio-Techne Canada

21 Canmotor Ave
Toronto, ON M8Z 4E6
Canada
Phone: 905.827.6400
Toll Free: 855.668.8722
Fax: 905.827.6402
canada.inquires@bio-techne.com

Bio-Techne Ltd

19 Barton Lane
Abingdon Science Park
Abingdon, OX14 3NB, United Kingdom
Phone: (44) (0) 1235 529449
Free Phone: 0800 37 34 15
Fax: (44) (0) 1235 533420
info.EMEA@bio-techne.com

General Contact Information

www.novusbio.com
Technical Support: nb-technical@bio-techne.com
Orders: nb-customerservice@bio-techne.com
General: novus@novusbio.com

Products Related to NBP3-32787

NBP2-33376H	Blue Marker Antibody (6F4-F6) [HRP]
HAF008	Goat anti-Rabbit IgG Secondary Antibody [HRP]
NB7160	Goat anti-Rabbit IgG (H+L) Secondary Antibody [HRP]
NBP2-24891	Rabbit IgG Isotype Control

Limitations

This product is for research use only and is not approved for use in humans or in clinical diagnosis. Primary Antibodies are guaranteed for 1 year from date of receipt.

For more information on our 100% guarantee, please visit www.novusbio.com/guarantee

Earn gift cards/discounts by submitting a review: www.novusbio.com/reviews/submit/NBP3-32787

Earn gift cards/discounts by submitting a publication using this product:
www.novusbio.com/publications

