

Product Datasheet

PHF6 Antibody (PSH02-35)

NBP3-32746

Unit Size: 100 ul

Store at 4C short term. Aliquot and store at -20C long term. Avoid freeze-thaw cycles.

www.novusbio.com



technical@novusbio.com

Protocols, Publications, Related Products, Reviews, Research Tools and Images at:
www.novusbio.com/NBP3-32746

Updated 9/9/2025 v.20.1

Earn rewards for product
reviews and publications.

Submit a publication at www.novusbio.com/publications

Submit a review at www.novusbio.com/reviews/destination/NBP3-32746



NBP3-32746

PHF6 Antibody (PSH02-35)

Product Information	
Unit Size	100 ul
Concentration	1 mg/ml
Storage	Store at 4C short term. Aliquot and store at -20C long term. Avoid freeze-thaw cycles.
Clonality	Monoclonal
Clone	PSH02-35
Preservative	0.05% Sodium Azide
Isotype	IgG
Purity	Protein A purified
Buffer	PBS (pH7.4), 0.1% BSA and 40% Glycerol
Target Molecular Weight	41 kDa

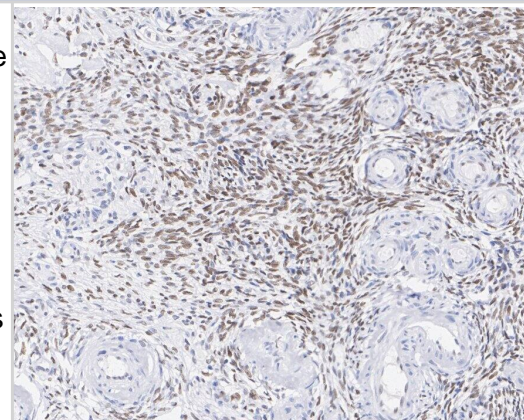
Product Description	
Description	Novus Biologicals Rabbit PHF6 Antibody (PSH02-35) (NBP3-32746) is a recombinant monoclonal antibody validated for use in IHC, WB and ICC/IF. All Novus Biologicals antibodies are covered by our 100% guarantee.
Host	Rabbit
Gene ID	84295
Gene Symbol	PHF6
Species	Human, Mouse, Rat, Monkey
Immunogen	Recombinant protein within human PHF6 aa 1-365 / 365 (Q8IWS0). (Uniprot: Q8IWS0)

Product Application Details	
Applications	Western Blot, Immunohistochemistry-Paraffin, Immunocytochemistry/Immunofluorescence, Immunohistochemistry
Recommended Dilutions	Western Blot 1:1000, Immunohistochemistry, Immunocytochemistry/Immunofluorescence 1:100, Immunohistochemistry-Paraffin 1:1000

Images

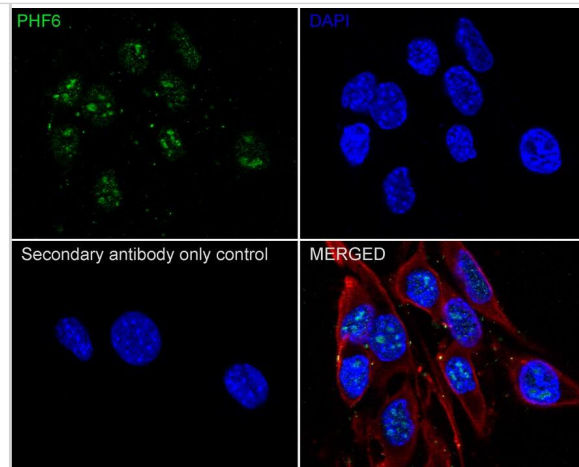
Immunohistochemistry: PHF6 Antibody (PSH02-35) [NBP3-32746] - Immunohistochemical analysis of paraffin-embedded human ovary tissue with Rabbit anti-PHF6 antibody (NBP3-32746) at 1/1,000 dilution.

The section was pre-treated using heat mediated antigen retrieval with sodium citrate buffer (pH 6.0) for 2 minutes. The tissues were blocked in 1% BSA for 20 minutes at room temperature, washed with ddH₂O and PBS, and then probed with the primary antibody (NBP3-32746) at 1/1,000 dilution for 1 hour at room temperature. The detection was performed using an HRP conjugated compact polymer system. DAB was used as the chromogen. Tissues were counterstained with hematoxylin and mounted with DPX.



Immunocytochemistry/ Immunofluorescence: PHF6 Antibody (PSH02-35) [NBP3-32746] - Immunocytochemistry analysis of NIH/3T3 cells labeling PHF6 with Rabbit anti-PHF6 antibody (NBP3-32746) at 1/100 dilution.

Cells were fixed in 4% paraformaldehyde for 20 minutes at room temperature, permeabilized with 0.1% Triton X-100 in PBS for 5 minutes at room temperature, then blocked with 1% BSA in 10% negative goat serum for 1 hour at room temperature. Cells were then incubated with Rabbit anti-PHF6 antibody (NBP3-32746) at 1/100 dilution in 1% BSA in PBST overnight at 4 °C. Goat Anti-Rabbit IgG H&L (iFluor™ 488) was used as the secondary antibody at 1/1,000 dilution. PBS instead of the primary antibody was used as the secondary antibody only control. Nuclear DNA was labelled in blue with DAPI.



Beta tubulin (red) was stained at 1/100 dilution overnight at +4°C. Goat Anti-Mouse IgG H&L (iFluor™ 594) was used as the secondary antibody at 1/1,000 dilution.

Western Blot: PHF6 Antibody (PSH02-35) [NBP3-32746] - Western blot analysis of PHF6 on different lysates with Rabbit anti-PHF6 antibody (NBP3-32746) at 1/1,000 dilution.

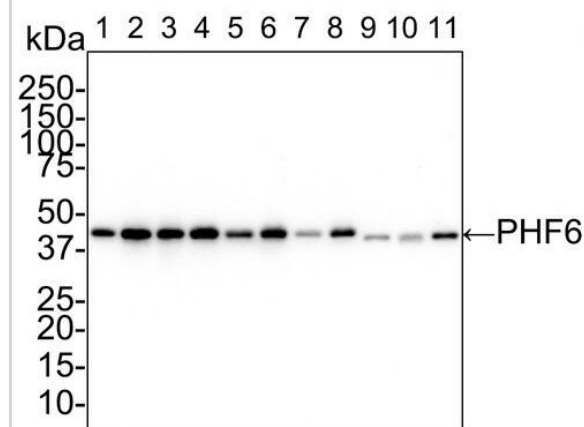
Lane 1: HeLa cell lysate (20 µg/Lane)
 Lane 2: HEK-293 cell lysate (20 µg/Lane)
 Lane 3: K-562 cell lysate (20 µg/Lane)
 Lane 4: Jurkat cell lysate (20 µg/Lane)
 Lane 5: A431 cell lysate (20 µg/Lane)
 Lane 6: HepG2 cell lysate (20 µg/Lane)
 Lane 7: MCF7 cell lysate (20 µg/Lane)
 Lane 8: COS-1 cell lysate (20 µg/Lane)
 Lane 9: NIH/3T3 cell lysate (20 µg/Lane)
 Lane 10: Neuro-2a cell lysate (20 µg/Lane)
 Lane 11: RAW264.7 cell lysate (20 µg/Lane)

Predicted band size: 41 kDa
 Observed band size: 41 kDa

Exposure time: 20 seconds;

4-20% SDS-PAGE gel.

Proteins were transferred to a PVDF membrane and blocked with 5% NFDM/TBST for 1 hour at room temperature. The primary antibody at 1/1,000 dilution was used in 5% NFDM/TBST at 4°C overnight. Goat Anti-Rabbit IgG - HRP Secondary Antibody at 1/50,000 dilution was used for 1 hour at room temperature.





Novus Biologicals USA

10730 E. Briarwood Avenue
Centennial, CO 80112
USA
Phone: 303.730.1950
Toll Free: 1.888.506.6887
Fax: 303.730.1966
nb-customerservice@bio-techne.com

Bio-Techne Canada

21 Canmotor Ave
Toronto, ON M8Z 4E6
Canada
Phone: 905.827.6400
Toll Free: 855.668.8722
Fax: 905.827.6402
canada.inquires@bio-techne.com

Bio-Techne Ltd

19 Barton Lane
Abingdon Science Park
Abingdon, OX14 3NB, United Kingdom
Phone: (44) (0) 1235 529449
Free Phone: 0800 37 34 15
Fax: (44) (0) 1235 533420
info.EMEA@bio-techne.com

General Contact Information

www.novusbio.com
Technical Support: nb-technical@bio-techne.com
Orders: nb-customerservice@bio-techne.com
General: novus@novusbio.com

Products Related to NBP3-32746

NBP2-33376H	Blue Marker Antibody (6F4-F6) [HRP]
HAF008	Goat anti-Rabbit IgG Secondary Antibody [HRP]
NB7160	Goat anti-Rabbit IgG (H+L) Secondary Antibody [HRP]
NBP2-24891	Rabbit IgG Isotype Control

Limitations

This product is for research use only and is not approved for use in humans or in clinical diagnosis. Primary Antibodies are guaranteed for 1 year from date of receipt.

For more information on our 100% guarantee, please visit www.novusbio.com/guarantee

Earn gift cards/discounts by submitting a review: www.novusbio.com/reviews/submit/NBP3-32746

Earn gift cards/discounts by submitting a publication using this product:
www.novusbio.com/publications

