

Product Datasheet

NF2/Merlin Antibody (PSH02-52) NBP3-32590

Unit Size: 100 ul

Store at 4C short term. Aliquot and store at -20C long term. Avoid freeze-thaw cycles.

www.novusbio.com



technical@novusbio.com

Protocols, Publications, Related Products, Reviews, Research Tools and Images at:
www.novusbio.com/NBP3-32590

Updated 9/9/2025 v.20.1

Earn rewards for product
reviews and publications.

Submit a publication at www.novusbio.com/publications

Submit a review at www.novusbio.com/reviews/destination/NBP3-32590



NBP3-32590

NF2/Merlin Antibody (PSH02-52)

| Product Information | |
|-------------------------|--|
| Unit Size | 100 ul |
| Concentration | 1 mg/ml |
| Storage | Store at 4C short term. Aliquot and store at -20C long term. Avoid freeze-thaw cycles. |
| Clonality | Monoclonal |
| Clone | PSH02-52 |
| Preservative | 0.05% Sodium Azide |
| Isotype | IgG |
| Purity | Protein A purified |
| Buffer | PBS (pH7.4), 0.1% BSA and 40% Glycerol |
| Target Molecular Weight | 70 kDa |

| Product Description | |
|---------------------|---|
| Description | Novus Biologicals Rabbit NF2/Merlin Antibody (PSH02-52) (NBP3-32590) is a recombinant monoclonal antibody validated for use in WB, Flow and ICC/IF. All Novus Biologicals antibodies are covered by our 100% guarantee. |
| Host | Rabbit |
| Gene ID | 4771 |
| Gene Symbol | NF2 |
| Species | Human, Mouse, Rat, Monkey |
| Immunogen | Recombinant protein within human NF2/Merlin aa 1-350 / 595 (P35240). (Uniprot: P35240) |

| Product Application Details | |
|-----------------------------|---|
| Applications | Western Blot, Flow Cytometry, Immunocytochemistry/ Immunofluorescence |
| Recommended Dilutions | Western Blot 1:2000, Flow Cytometry 1:1000, Immunocytochemistry/ Immunofluorescence 1:100 |



Images

Western Blot: NF2/Merlin Antibody (PSH02-52) [NBP3-32590] - Western blot analysis of NF2/Merlin on different lysates with Rabbit anti-NF2/Merlin antibody (NBP3-32590) at 1/2,000 dilution.

Lane 1: PC-3M cell lysate (20 ug/Lane)
 Lane 2: HeLa cell lysate (20 ug/Lane)
 Lane 3: MDA-MB-468 cell lysate (20 ug/Lane)
 Lane 4: SH-SY5Y cell lysate (20 ug/Lane)
 Lane 5: HUVEC cell lysate (20 ug/Lane)
 Lane 6: HEK-293 cell lysate (20 ug/Lane)
 Lane 7: Jurkat cell lysate (20 ug/Lane)
 Lane 8: MDA-MB-231 cell lysate (negative) (20 ug/Lane)
 Lane 9: COS-1 cell lysate (20 ug/Lane)
 Lane 10: Neuro-2a cell lysate (20 ug/Lane)
 Lane 11: NIH/3T3 cell lysate (20 ug/Lane)
 Lane 12: C6 cell lysate (20 ug/Lane)

Predicted band size: 70 kDa
 Observed band size: 70 kDa

Exposure time: 1 minute 41 seconds;

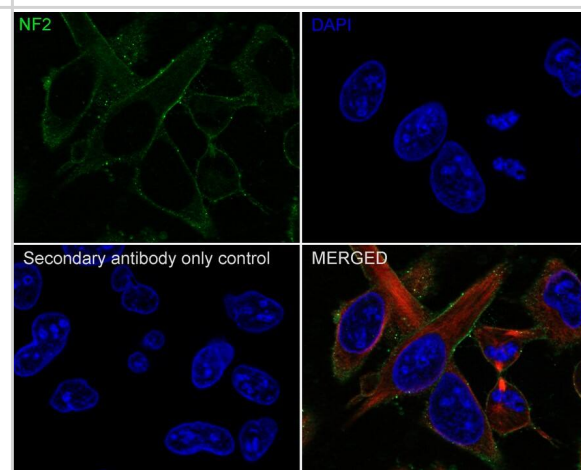
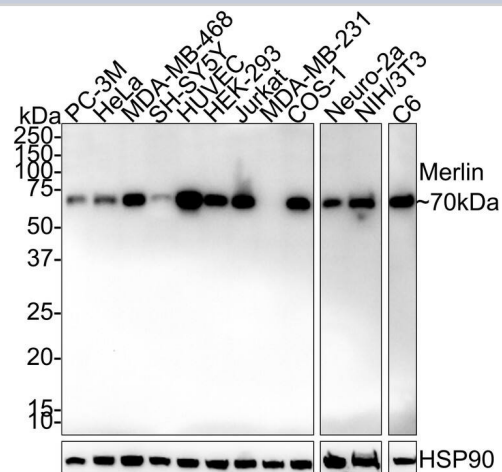
4-20% SDS-PAGE gel.

Proteins were transferred to a PVDF membrane and blocked with 5% NFDM/TBST for 1 hour at room temperature. The primary antibody (NBP3-32590) at 1/2,000 dilution was used in 5% NFDM/TBST at 4 overnight. Goat Anti-Rabbit IgG - HRP Secondary Antibody at 1/50,000 dilution was used for 1 hour at room temperature.

Immunocytochemistry/ Immunofluorescence: NF2/Merlin Antibody (PSH02-52) [NBP3-32590] - Immunocytochemistry analysis of HUVEC cells labeling NF2/Merlin with Rabbit anti-NF2/Merlin antibody (NBP3-32590) at 1/100 dilution.

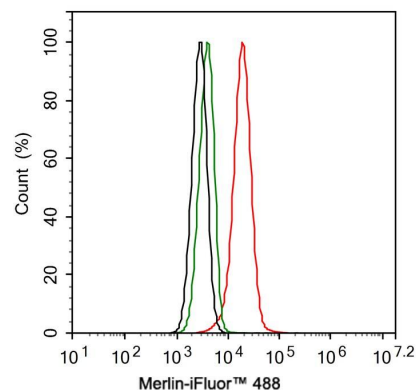
Cells were fixed in 100% precooled methanol for 5 minutes at room temperature, then blocked with 1% BSA in 10% negative goat serum for 1 hour at room temperature. Cells were then incubated with Rabbit anti-NF2/Merlin antibody (NBP3-32590) at 1/100 dilution in 1% BSA in PBST overnight at 4 °C. Goat Anti-Rabbit IgG H&L (iFluor™ 488) was used as the secondary antibody at 1/1,000 dilution. PBS instead of the primary antibody was used as the secondary antibody only control. Nuclear DNA was labelled in blue with DAPI.

Beta tubulin (red) was stained at 1/100 dilution overnight at +4 °C. Goat Anti-Mouse IgG H&L (iFluor™ 594) was used as the secondary antibody at 1/1,000 dilution.



Flow Cytometry: NF2/Merlin Antibody (PSH02-52) [NBP3-32590] - Flow cytometric analysis of NIH/3T3 cells labeling NF2/Merlin.

Cells were fixed and permeabilized. Then stained with the primary antibody (NBP3-32590, 1 μ g/mL) (red) compared with Rabbit IgG Isotype Control (green). After incubation of the primary antibody at +4 \square for an hour, the cells were stained with a iFluor™ 488 conjugate-Goat anti-Rabbit IgG Secondary antibody at 1/1,000 dilution for 30 minutes at +4 \square . Unlabelled sample was used as a control (cells without incubation with primary antibody; black).





Novus Biologicals USA

10730 E. Briarwood Avenue
Centennial, CO 80112
USA
Phone: 303.730.1950
Toll Free: 1.888.506.6887
Fax: 303.730.1966
nb-customerservice@bio-techne.com

Bio-Techne Canada

21 Canmotor Ave
Toronto, ON M8Z 4E6
Canada
Phone: 905.827.6400
Toll Free: 855.668.8722
Fax: 905.827.6402
canada.inquires@bio-techne.com

Bio-Techne Ltd

19 Barton Lane
Abingdon Science Park
Abingdon, OX14 3NB, United Kingdom
Phone: (44) (0) 1235 529449
Free Phone: 0800 37 34 15
Fax: (44) (0) 1235 533420
info.EMEA@bio-techne.com

General Contact Information

www.novusbio.com
Technical Support: nb-technical@bio-techne.com
Orders: nb-customerservice@bio-techne.com
General: novus@novusbio.com

Products Related to NBP3-32590

| | |
|-------------|---|
| NBP2-33376H | Blue Marker Antibody (6F4-F6) [HRP] |
| HAF008 | Goat anti-Rabbit IgG Secondary Antibody [HRP] |
| NB7160 | Goat anti-Rabbit IgG (H+L) Secondary Antibody [HRP] |
| NBP2-24891 | Rabbit IgG Isotype Control |

Limitations

This product is for research use only and is not approved for use in humans or in clinical diagnosis. Primary Antibodies are guaranteed for 1 year from date of receipt.

For more information on our 100% guarantee, please visit www.novusbio.com/guarantee

Earn gift cards/discounts by submitting a review: www.novusbio.com/reviews/submit/NBP3-32590

Earn gift cards/discounts by submitting a publication using this product:
www.novusbio.com/publications

