

# Product Datasheet

## LAP3 Antibody (PSH01-26)

### NBP3-32525

Unit Size: 100 ul

Store at 4C short term. Aliquot and store at -20C long term. Avoid freeze-thaw cycles.

[www.novusbio.com](http://www.novusbio.com)



[technical@novusbio.com](mailto:technical@novusbio.com)

Protocols, Publications, Related Products, Reviews, Research Tools and Images at:  
[www.novusbio.com/NBP3-32525](http://www.novusbio.com/NBP3-32525)

Updated 9/9/2025 v.20.1

Earn rewards for product  
reviews and publications.

Submit a publication at [www.novusbio.com/publications](http://www.novusbio.com/publications)

Submit a review at [www.novusbio.com/reviews/destination/NBP3-32525](http://www.novusbio.com/reviews/destination/NBP3-32525)



**NBP3-32525**

LAP3 Antibody (PSH01-26)

Product Information	
Unit Size	100 ul
Concentration	1 mg/ml
Storage	Store at 4C short term. Aliquot and store at -20C long term. Avoid freeze-thaw cycles.
Clonality	Monoclonal
Clone	PSH01-26
Preservative	0.05% Sodium Azide
Isotype	IgG
Purity	Protein A purified
Buffer	PBS (pH7.4), 0.1% BSA and 40% Glycerol
Target Molecular Weight	56 kDa

Product Description	
Description	Novus Biologicals Rabbit LAP3 Antibody (PSH01-26) (NBP3-32525) is a recombinant monoclonal antibody validated for use in IHC and WB. All Novus Biologicals antibodies are covered by our 100% guarantee.
Host	Rabbit
Gene ID	51056
Gene Symbol	LAP3
Species	Human, Mouse, Rat
Immunogen	Recombinant protein within human LAP3 aa 1-519 / 519. (Uniprot: P28838)

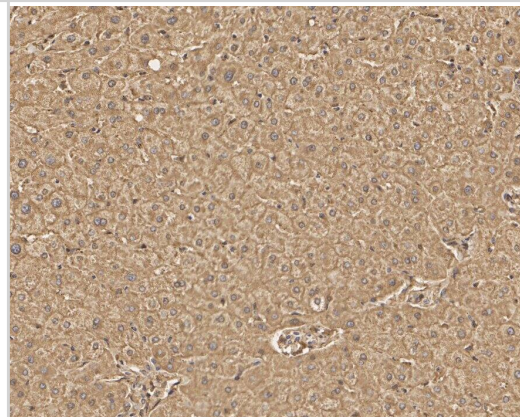
Product Application Details	
Applications	Western Blot, Immunohistochemistry-Paraffin, Immunohistochemistry
Recommended Dilutions	Western Blot 1:1000-1:5000, Immunohistochemistry, Immunohistochemistry-Paraffin 1:1000



## Images

Immunohistochemistry: LAP3 Antibody (PSH01-26) [NBP3-32525] - Immunohistochemical analysis of paraffin-embedded human liver tissue with Rabbit anti-LAP3 antibody (NBP3-32525) at 1/1,000 dilution.

The section was pre-treated using heat mediated antigen retrieval with Tris-EDTA buffer (pH 9.0) for 20 minutes. The tissues were blocked in 1% BSA for 20 minutes at room temperature, washed with ddH<sub>2</sub>O and PBS, and then probed with the primary antibody (NBP3-32525) at 1/1,000 dilution for 1 hour at room temperature. The detection was performed using an HRP conjugated compact polymer system. DAB was used as the chromogen. Tissues were counterstained with hematoxylin and mounted with DPX.



Western Blot: LAP3 Antibody (PSH01-26) [NBP3-32525] - Western blot analysis of LAP3 on different lysates with Rabbit anti-LAP3 antibody (NBP3-32525) at 1/5,000 dilution.

Lane 1: HeLa cell lysate (15 µg/Lane)  
 Lane 2: HepG2 cell lysate (15 µg/Lane)  
 Lane 3: U-87 MG cell lysate (15 µg/Lane)  
 Lane 4: Daudi cell lysate (15 µg/Lane)  
 Lane 5: C6 cell lysate (15 µg/Lane)  
 Lane 6: Mouse liver tissue lysate (30 µg/Lane)  
 Lane 7: Rat liver tissue lysate (30 µg/Lane)

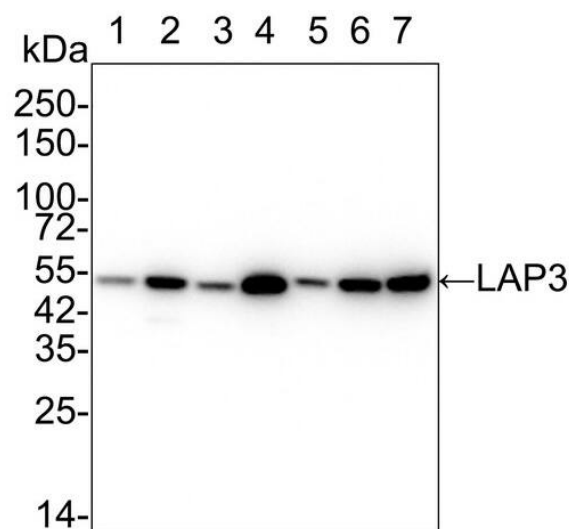
Predicted band size: 56 kDa  
 Observed band size: 50 kDa

Exposure time:

Lane 1-7 (left): 1 minute;  
 Lane 1-7 (right): 3 minutes;

4-20% SDS-PAGE gel.

Proteins were transferred to a PVDF membrane and blocked with 5% NFDm/TBST for 1 hour at room temperature. The primary antibody at 1/5,000 dilution was used in 5% NFDm/TBST at 4°C overnight. Goat Anti-Rabbit IgG - HRP Secondary Antibody at 1/50,000 dilution was used for 1 hour at room temperature.





### **Novus Biologicals USA**

10730 E. Briarwood Avenue  
Centennial, CO 80112  
USA  
Phone: 303.730.1950  
Toll Free: 1.888.506.6887  
Fax: 303.730.1966  
nb-customerservice@bio-techne.com

### **Bio-Techne Canada**

21 Canmotor Ave  
Toronto, ON M8Z 4E6  
Canada  
Phone: 905.827.6400  
Toll Free: 855.668.8722  
Fax: 905.827.6402  
canada.inquires@bio-techne.com

### **Bio-Techne Ltd**

19 Barton Lane  
Abingdon Science Park  
Abingdon, OX14 3NB, United Kingdom  
Phone: (44) (0) 1235 529449  
Free Phone: 0800 37 34 15  
Fax: (44) (0) 1235 533420  
info.EMEA@bio-techne.com

### **General Contact Information**

www.novusbio.com  
Technical Support: nb-technical@bio-techne.com  
Orders: nb-customerservice@bio-techne.com  
General: novus@novusbio.com

### **Products Related to NBP3-32525**

---

NBP2-33376H	Blue Marker Antibody (6F4-F6) [HRP]
HAF008	Goat anti-Rabbit IgG Secondary Antibody [HRP]
NB7160	Goat anti-Rabbit IgG (H+L) Secondary Antibody [HRP]
NBP2-24891	Rabbit IgG Isotype Control

---

### **Limitations**

This product is for research use only and is not approved for use in humans or in clinical diagnosis. Primary Antibodies are guaranteed for 1 year from date of receipt.

For more information on our 100% guarantee, please visit [www.novusbio.com/guarantee](http://www.novusbio.com/guarantee)

Earn gift cards/discounts by submitting a review: [www.novusbio.com/reviews/submit/NBP3-32525](http://www.novusbio.com/reviews/submit/NBP3-32525)

Earn gift cards/discounts by submitting a publication using this product:  
[www.novusbio.com/publications](http://www.novusbio.com/publications)

