

Product Datasheet

Lysine (K)-specific Demethylase 3A/KDM3A/JMJD1A Antibody (PSH01-77) NBP3-32490

Unit Size: 100 ul

Store at 4C short term. Aliquot and store at -20C long term. Avoid freeze-thaw cycles.

www.novusbio.com



technical@novusbio.com

Protocols, Publications, Related Products, Reviews, Research Tools and Images at:
www.novusbio.com/NBP3-32490

Updated 9/9/2025 v.20.1

Earn rewards for product
reviews and publications.

Submit a publication at www.novusbio.com/publications

Submit a review at www.novusbio.com/reviews/destination/NBP3-32490



NBP3-32490

Lysine (K)-specific Demethylase 3A/KDM3A/JMJD1A Antibody (PSH01-77)

Product Information	
Unit Size	100 ul
Concentration	1 mg/ml
Storage	Store at 4C short term. Aliquot and store at -20C long term. Avoid freeze-thaw cycles.
Clonality	Monoclonal
Clone	PSH01-77
Preservative	0.05% Sodium Azide
Isotype	IgG
Purity	Protein A purified
Buffer	PBS (pH7.4), 0.1% BSA and 40% Glycerol
Target Molecular Weight	147 kDa

Product Description	
Description	Novus Biologicals Rabbit Lysine (K)-specific Demethylase 3A/KDM3A/JMJD1A Antibody (PSH01-77) (NBP3-32490) is a recombinant monoclonal antibody validated for use in IHC and WB. All Novus Biologicals antibodies are covered by our 100% guarantee.
Host	Rabbit
Gene ID	55818
Gene Symbol	KDM3A
Species	Human, Mouse
Immunogen	Recombinant protein within human KDM3A aa 1-400 / 1,321. (Uniprot: Q9Y4C1)

Product Application Details	
Applications	Western Blot, Immunohistochemistry
Recommended Dilutions	Western Blot 1:1000, Immunohistochemistry 1:200-1:1000



Images

Western Blot: Lysine (K)-specific Demethylase 3A/KDM3A/JMJD1A Antibody (PSH01-77) [NBP3-32490] - Western blot analysis of Lysine (K)-specific Demethylase 3A/KDM3A/JMJD1A on different lysates with Rabbit anti-Lysine (K)-specific Demethylase 3A/KDM3A/JMJD1A antibody (NBP3-32490) at 1/1,000 dilution.

Lane 1: HCT116 cell lysate
 Lane 2: Hela cell lysate
 Lane 3: MCF7 cell lysate
 Lane 4: Ramos cell lysate
 Lane 5: Jurkat cell lysate
 Lane 6: NIH/3T3 cell lysate

Lysates/proteins at 30 ug/Lane.

Predicted band size: 147 kDa
 Observed band size: 150 kDa

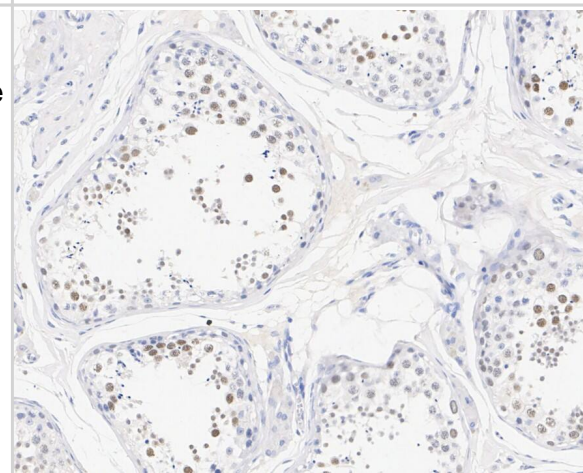
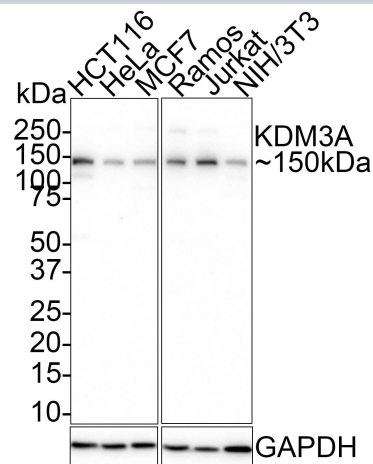
Exposure time: 2 minutes 50 seconds;

4-20% SDS-PAGE gel.

Proteins were transferred to a PVDF membrane and blocked with 5% NFDM/TBST for 1 hour at room temperature. The primary antibody (NBP3-32490) at 1/1,000 dilution was used in 5% NFDM/TBST at 4 overnight. Goat Anti-Rabbit IgG - HRP Secondary Antibody at 1/50,000 dilution was used for 1 hour at room temperature.

Immunohistochemistry: Lysine (K)-specific Demethylase 3A/KDM3A/JMJD1A Antibody (PSH01-77) [NBP3-32490] - Immunohistochemical analysis of paraffin-embedded human testis tissue with Rabbit anti-Lysine (K)-specific Demethylase 3A/KDM3A/JMJD1A antibody (NBP3-32490) at 1/200 dilution.

The section was pre-treated using heat mediated antigen retrieval with sodium citrate buffer (pH 6.0) for 2 minutes. The tissues were blocked in 1% BSA for 20 minutes at room temperature, washed with ddH₂O and PBS, and then probed with the primary antibody (NBP3-32490) at 1/200 dilution for 1 hour at room temperature. The detection was performed using an HRP conjugated compact polymer system. DAB was used as the chromogen. Tissues were counterstained with hematoxylin and mounted with DPX.





Novus Biologicals USA

10730 E. Briarwood Avenue
Centennial, CO 80112
USA
Phone: 303.730.1950
Toll Free: 1.888.506.6887
Fax: 303.730.1966
nb-customerservice@bio-techne.com

Bio-Techne Canada

21 Canmotor Ave
Toronto, ON M8Z 4E6
Canada
Phone: 905.827.6400
Toll Free: 855.668.8722
Fax: 905.827.6402
canada.inquires@bio-techne.com

Bio-Techne Ltd

19 Barton Lane
Abingdon Science Park
Abingdon, OX14 3NB, United Kingdom
Phone: (44) (0) 1235 529449
Free Phone: 0800 37 34 15
Fax: (44) (0) 1235 533420
info.EMEA@bio-techne.com

General Contact Information

www.novusbio.com
Technical Support: nb-technical@bio-techne.com
Orders: nb-customerservice@bio-techne.com
General: novus@novusbio.com

Products Related to NBP3-32490

NBP2-33376H	Blue Marker Antibody (6F4-F6) [HRP]
HAF008	Goat anti-Rabbit IgG Secondary Antibody [HRP]
NB7160	Goat anti-Rabbit IgG (H+L) Secondary Antibody [HRP]
NBP2-24891	Rabbit IgG Isotype Control

Limitations

This product is for research use only and is not approved for use in humans or in clinical diagnosis. Primary Antibodies are guaranteed for 1 year from date of receipt.

For more information on our 100% guarantee, please visit www.novusbio.com/guarantee

Earn gift cards/discounts by submitting a review: www.novusbio.com/reviews/submit/NBP3-32490

Earn gift cards/discounts by submitting a publication using this product:
www.novusbio.com/publications

