

# Product Datasheet

## HUWE1 Antibody (PSH02-38)

### NBP3-32455

Unit Size: 100 ul

Store at 4C short term. Aliquot and store at -20C long term. Avoid freeze-thaw cycles.

[www.novusbio.com](http://www.novusbio.com)



[technical@novusbio.com](mailto:technical@novusbio.com)

Protocols, Publications, Related Products, Reviews, Research Tools and Images at:  
[www.novusbio.com/NBP3-32455](http://www.novusbio.com/NBP3-32455)

Updated 9/9/2025 v.20.1

Earn rewards for product  
reviews and publications.

Submit a publication at [www.novusbio.com/publications](http://www.novusbio.com/publications)

Submit a review at [www.novusbio.com/reviews/destination/NBP3-32455](http://www.novusbio.com/reviews/destination/NBP3-32455)



**NBP3-32455**

HUWE1 Antibody (PSH02-38)

<b>Product Information</b>	
<b>Unit Size</b>	100 ul
<b>Concentration</b>	1 mg/ml
<b>Storage</b>	Store at 4C short term. Aliquot and store at -20C long term. Avoid freeze-thaw cycles.
<b>Clonality</b>	Monoclonal
<b>Clone</b>	PSH02-38
<b>Preservative</b>	0.05% Sodium Azide
<b>Isotype</b>	IgG
<b>Purity</b>	Protein A purified
<b>Buffer</b>	PBS (pH7.4), 0.1% BSA and 40% Glycerol
<b>Target Molecular Weight</b>	482.7 kDa
<b>Product Description</b>	
<b>Description</b>	Novus Biologicals Rabbit HUWE1 Antibody (PSH02-38) (NBP3-32455) is a recombinant monoclonal antibody validated for use in IHC, WB, Flow and ICC/IF. All Novus Biologicals antibodies are covered by our 100% guarantee.
<b>Host</b>	Rabbit
<b>Gene ID</b>	10075
<b>Gene Symbol</b>	HUWE1
<b>Species</b>	Human, Mouse, Rat
<b>Immunogen</b>	Synthetic peptide within rat HUWE1 aa 2,701-2,750 / 4,378 (A0A8I6A634). (Uniprot: A0A8I6A634)
<b>Product Application Details</b>	
<b>Applications</b>	Western Blot, Immunohistochemistry-Paraffin, Flow Cytometry, Immunocytochemistry/ Immunofluorescence, Immunohistochemistry
<b>Recommended Dilutions</b>	Western Blot 1:1000, Flow Cytometry 1:1000, Immunohistochemistry, Immunocytochemistry/ Immunofluorescence 1:100, Immunohistochemistry-Paraffin 1:1000



## Images

Western Blot: HUWE1 Antibody (PSH02-38) [NBP3-32455] - Western blot analysis of HUWE1 on PC-12 cell lysates with Rabbit anti-HUWE1 antibody (NBP3-32455) at 1/1,000 dilution.

Lysates/proteins at 20 ug/Lane.

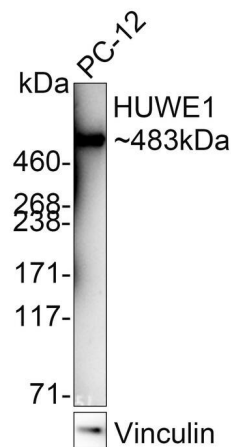
Predicted band size: 482.7 kDa

Observed band size: 482.7 kDa

Exposure time: 5 minutes;

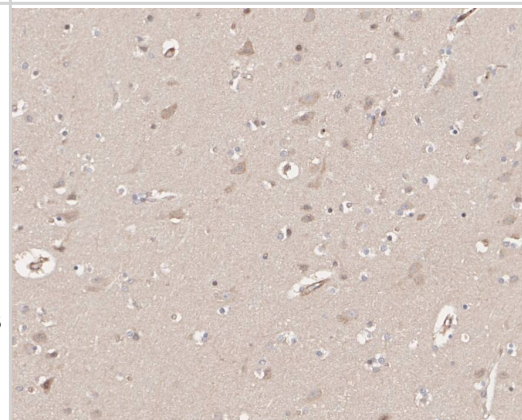
4-20% SDS-PAGE gel.

Proteins were transferred to a PVDF membrane and blocked with 5% NFDM/TBST for 1 hour at room temperature. The primary antibody (NBP3-32455) at 1/1,000 dilution was used in 5% NFDM/TBST at 4 overnight. Goat Anti-Rabbit IgG - HRP Secondary Antibody at 1/50,000 dilution was used for 1 hour at room temperature.



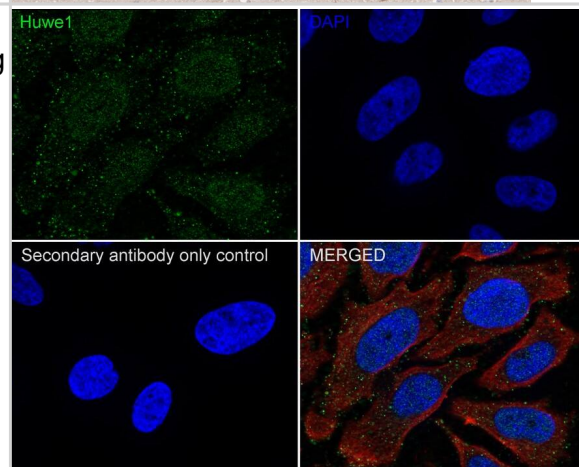
Immunohistochemistry: HUWE1 Antibody (PSH02-38) [NBP3-32455] - Immunohistochemical analysis of paraffin-embedded human brain tissue with Rabbit anti-HUWE1 antibody (NBP3-32455) at 1/1,000 dilution.

The section was pre-treated using heat mediated antigen retrieval with sodium citrate buffer (pH 6.0) for 2 minutes. The tissues were blocked in 1% BSA for 20 minutes at room temperature, washed with ddH<sub>2</sub>O and PBS, and then probed with the primary antibody (NBP3-32455) at 1/1,000 dilution for 1 hour at room temperature. The detection was performed using an HRP conjugated compact polymer system. DAB was used as the chromogen. Tissues were counterstained with hematoxylin and mounted with DPX.



Immunocytochemistry/ Immunofluorescence: HUWE1 Antibody (PSH02-38) [NBP3-32455] - Immunocytochemistry analysis of HeLa cells labeling HUWE1 with Rabbit anti-HUWE1 antibody (NBP3-32455) at 1/100 dilution.

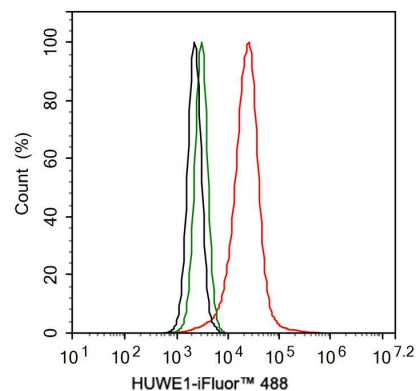
Cells were fixed in 4% paraformaldehyde for 20 minutes at room temperature, permeabilized with 0.1% Triton X-100 in PBS for 5 minutes at room temperature, then blocked with 1% BSA in 10% negative goat serum for 1 hour at room temperature. Cells were then incubated with Rabbit anti-HUWE1 antibody (NBP3-32455) at 1/100 dilution in 1% BSA in PBST overnight at 4 °C. Goat Anti-Rabbit IgG H&L (iFluor™ 488) was used as the secondary antibody at 1/1,000 dilution. PBS instead of the primary antibody was used as the secondary antibody only control. Nuclear DNA was labelled in blue with DAPI.



Beta tubulin (red) was stained at 1/100 dilution overnight at +4 °C. Goat Anti-Mouse IgG H&L (iFluor™ 594) was used as the secondary antibody at 1/1,000 dilution.

**Flow Cytometry: HUWE1 Antibody (PSH02-38) [NBP3-32455] - Flow cytometric analysis of HeLa cells labeling HUWE1.**

Cells were fixed and permeabilized. Then stained with the primary antibody (NBP3-32455, 1:1,000) (red) compared with Rabbit IgG Isotype Control (green). After incubation of the primary antibody at +4°C for an hour, the cells were stained with a iFluor™ 488 conjugate-Goat anti-Rabbit IgG Secondary antibody at 1/1,000 dilution for 30 minutes at +4°C. Unlabelled sample was used as a control (cells without incubation with primary antibody; black).





### **Novus Biologicals USA**

10730 E. Briarwood Avenue  
Centennial, CO 80112  
USA  
Phone: 303.730.1950  
Toll Free: 1.888.506.6887  
Fax: 303.730.1966  
nb-customerservice@bio-techne.com

### **Bio-Techne Canada**

21 Canmotor Ave  
Toronto, ON M8Z 4E6  
Canada  
Phone: 905.827.6400  
Toll Free: 855.668.8722  
Fax: 905.827.6402  
canada.inquires@bio-techne.com

### **Bio-Techne Ltd**

19 Barton Lane  
Abingdon Science Park  
Abingdon, OX14 3NB, United Kingdom  
Phone: (44) (0) 1235 529449  
Free Phone: 0800 37 34 15  
Fax: (44) (0) 1235 533420  
info.EMEA@bio-techne.com

### **General Contact Information**

www.novusbio.com  
Technical Support: nb-technical@bio-techne.com  
Orders: nb-customerservice@bio-techne.com  
General: novus@novusbio.com

### **Products Related to NBP3-32455**

---

NBP2-33376H	Blue Marker Antibody (6F4-F6) [HRP]
HAF008	Goat anti-Rabbit IgG Secondary Antibody [HRP]
NB7160	Goat anti-Rabbit IgG (H+L) Secondary Antibody [HRP]
NBP2-24891	Rabbit IgG Isotype Control

---

### **Limitations**

This product is for research use only and is not approved for use in humans or in clinical diagnosis. Primary Antibodies are guaranteed for 1 year from date of receipt.

For more information on our 100% guarantee, please visit [www.novusbio.com/guarantee](http://www.novusbio.com/guarantee)

Earn gift cards/discounts by submitting a review: [www.novusbio.com/reviews/submit/NBP3-32455](http://www.novusbio.com/reviews/submit/NBP3-32455)

Earn gift cards/discounts by submitting a publication using this product:  
[www.novusbio.com/publications](http://www.novusbio.com/publications)

