

Product Datasheet

HADHA Antibody (PSH01-29)

NBP3-32415

Unit Size: 100 ul

Store at 4C short term. Aliquot and store at -20C long term. Avoid freeze-thaw cycles.

www.novusbio.com



technical@novusbio.com

Protocols, Publications, Related Products, Reviews, Research Tools and Images at:
www.novusbio.com/NBP3-32415

Updated 9/9/2025 v.20.1

Earn rewards for product
reviews and publications.

Submit a publication at www.novusbio.com/publications

Submit a review at www.novusbio.com/reviews/destination/NBP3-32415



NBP3-32415

HADHA Antibody (PSH01-29)

Product Information	
Unit Size	100 ul
Concentration	Please see the vial label for concentration. If unlisted please contact technical services.
Storage	Store at 4C short term. Aliquot and store at -20C long term. Avoid freeze-thaw cycles.
Clonality	Monoclonal
Clone	PSH01-29
Preservative	0.05% Sodium Azide
Isotype	IgG
Purity	Protein A purified
Buffer	PBS (pH7.4), 0.1% BSA and 40% Glycerol
Target Molecular Weight	83 kDa

Product Description	
Description	Novus Biologicals Rabbit HADHA Antibody (PSH01-29) (NBP3-32415) is a recombinant monoclonal antibody validated for use in WB. All Novus Biologicals antibodies are covered by our 100% guarantee.
Host	Rabbit
Gene ID	3030
Gene Symbol	HADHA
Species	Human, Mouse, Rat, Monkey
Immunogen	Recombinant protein within human HADHA aa 1-763 / 763. (Uniprot: P40939)

Product Application Details	
Applications	Western Blot
Recommended Dilutions	Western Blot 1:1000



Images

Western Blot: HADHA Antibody (PSH01-29) [NBP3-32415] - Western blot analysis of HADHA on different lysates with Rabbit anti-HADHA antibody (NBP3-32415) at 1/1,000 dilution.

Lane 1: 293T cell lysate
 Lane 2: HeLa cell lysate
 Lane 3: HepG2 cell lysate
 Lane 4: Jurkat cell lysate
 Lane 5: SH-SY5Y cell lysate
 Lane 6: COS-1 cell lysate
 Lane 7: Mouse heart tissue lysate
 Lane 8: Mouse kidney tissue lysate
 Lane 9: Human kidney tissue lysate
 Lane 10: Rat liver tissue lysate

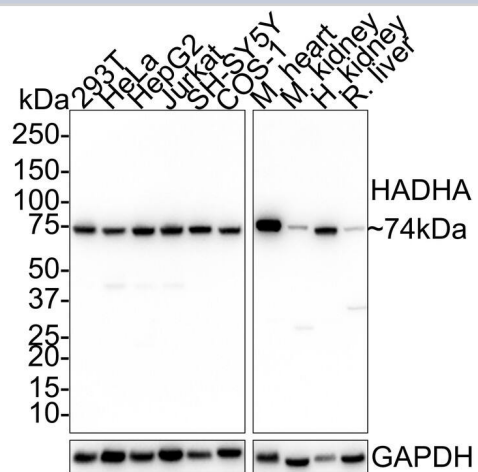
Lysates/proteins at 30 ug/Lane.

Predicted band size: 83 kDa
 Observed band size: 74 kDa

Exposure time: 24 seconds;

4-20% SDS-PAGE gel.

Proteins were transferred to a PVDF membrane and blocked with 5% NFDM/TBST for 1 hour at room temperature. The primary antibody (NBP3-32415) at 1/1,000 dilution was used in 5% NFDM/TBST at room temperature for 2 hours. Goat Anti-Rabbit IgG - HRP Secondary Antibody at 1:100,000 dilution was used for 1 hour at room temperature.





Novus Biologicals USA

10730 E. Briarwood Avenue
Centennial, CO 80112
USA
Phone: 303.730.1950
Toll Free: 1.888.506.6887
Fax: 303.730.1966
nb-customerservice@bio-techne.com

Bio-Techne Canada

21 Canmotor Ave
Toronto, ON M8Z 4E6
Canada
Phone: 905.827.6400
Toll Free: 855.668.8722
Fax: 905.827.6402
canada.inquires@bio-techne.com

Bio-Techne Ltd

19 Barton Lane
Abingdon Science Park
Abingdon, OX14 3NB, United Kingdom
Phone: (44) (0) 1235 529449
Free Phone: 0800 37 34 15
Fax: (44) (0) 1235 533420
info.EMEA@bio-techne.com

General Contact Information

www.novusbio.com
Technical Support: nb-technical@bio-techne.com
Orders: nb-customerservice@bio-techne.com
General: novus@novusbio.com

Products Related to NBP3-32415

NBP2-33376H	Blue Marker Antibody (6F4-F6) [HRP]
HAF008	Goat anti-Rabbit IgG Secondary Antibody [HRP]
NB7160	Goat anti-Rabbit IgG (H+L) Secondary Antibody [HRP]
NBP2-24891	Rabbit IgG Isotype Control

Limitations

This product is for research use only and is not approved for use in humans or in clinical diagnosis. Primary Antibodies are guaranteed for 1 year from date of receipt.

For more information on our 100% guarantee, please visit www.novusbio.com/guarantee

Earn gift cards/discounts by submitting a review: www.novusbio.com/reviews/submit/NBP3-32415

Earn gift cards/discounts by submitting a publication using this product:
www.novusbio.com/publications

