

# Product Datasheet

## EPCR Antibody (PSH03-50)

### NBP3-32311

Unit Size: 100 ul

Store at 4C short term. Aliquot and store at -20C long term. Avoid freeze-thaw cycles.

[www.novusbio.com](http://www.novusbio.com)



[technical@novusbio.com](mailto:technical@novusbio.com)

Protocols, Publications, Related Products, Reviews, Research Tools and Images at:  
[www.novusbio.com/NBP3-32311](http://www.novusbio.com/NBP3-32311)

Updated 9/9/2025 v.20.1

Earn rewards for product  
reviews and publications.

Submit a publication at [www.novusbio.com/publications](http://www.novusbio.com/publications)

Submit a review at [www.novusbio.com/reviews/destination/NBP3-32311](http://www.novusbio.com/reviews/destination/NBP3-32311)



**NBP3-32311**

EPCR Antibody (PSH03-50)

Product Information	
<b>Unit Size</b>	100 ul
<b>Concentration</b>	1 mg/ml
<b>Storage</b>	Store at 4C short term. Aliquot and store at -20C long term. Avoid freeze-thaw cycles.
<b>Clonality</b>	Monoclonal
<b>Clone</b>	PSH03-50
<b>Preservative</b>	0.05% Sodium Azide
<b>Isotype</b>	IgG
<b>Purity</b>	Protein A purified
<b>Buffer</b>	PBS (pH7.4), 0.1% BSA and 40% Glycerol
<b>Target Molecular Weight</b>	27 kDa

Product Description	
<b>Description</b>	Novus Biologicals Rabbit EPCR Antibody (PSH03-50) (NBP3-32311) is a recombinant monoclonal antibody validated for use in WB, Flow and ICC/IF. All Novus Biologicals antibodies are covered by our 100% guarantee.
<b>Host</b>	Rabbit
<b>Gene ID</b>	10544
<b>Gene Symbol</b>	PROCR
<b>Species</b>	Human
<b>Immunogen</b>	Recombinant protein within human EPCR aa 1-238 / 238. (Uniprot: Q9UNN8)

Product Application Details	
<b>Applications</b>	Western Blot, Flow Cytometry, Immunocytochemistry/ Immunofluorescence
<b>Recommended Dilutions</b>	Western Blot 1:1000, Flow Cytometry 1:1000, Immunocytochemistry/ Immunofluorescence 1:100



## Images

Western Blot: EPCR Antibody (PSH03-50) [NBP3-32311] - Western blot analysis of EPCR on different lysates with Rabbit anti-EPCR antibody (NBP3-32311) at 1/1,000 dilution.

Lane 1: HUVEC cell lysate  
Lane 2: EA.hy926 cell lysate  
Lane 3: Jurkat cell lysate (negative)

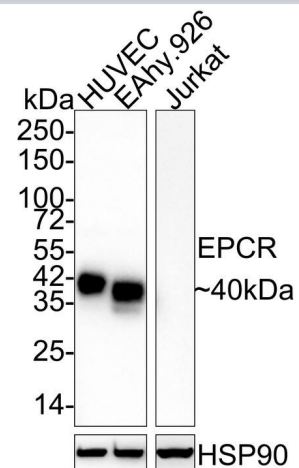
Lysates/proteins at 20 ug/Lane.

Predicted band size: 27 kDa  
Observed band size: 40 kDa

Exposure time: 1 minute 2 seconds;

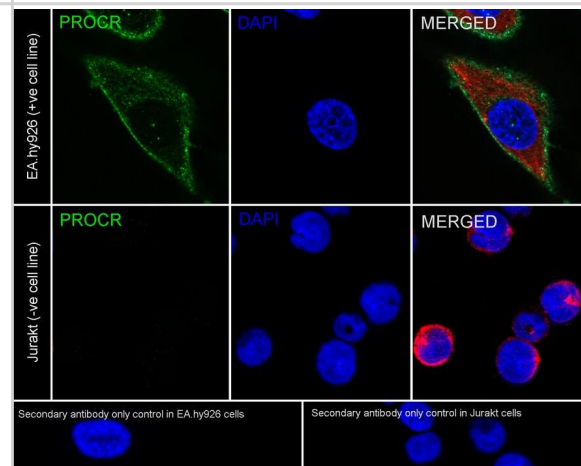
4-20% SDS-PAGE gel.

Proteins were transferred to a PVDF membrane and blocked with 5% NFDm/TBST for 1 hour at room temperature. The primary antibody (NBP3-32311) at 1/1,000 dilution was used in 5% NFDm/TBST at 4°C overnight. Goat Anti-Rabbit IgG - HRP Secondary Antibody at 1/50,000 dilution was used for 1 hour at room temperature.



Immunocytochemistry/ Immunofluorescence: EPCR Antibody (PSH03-50) [NBP3-32311] - Immunocytochemistry analysis of EA.hy926 (positive) and Jurkat (negative) labeling EPCR with Rabbit anti-EPCR antibody (NBP3-32311) at 1/100 dilution.

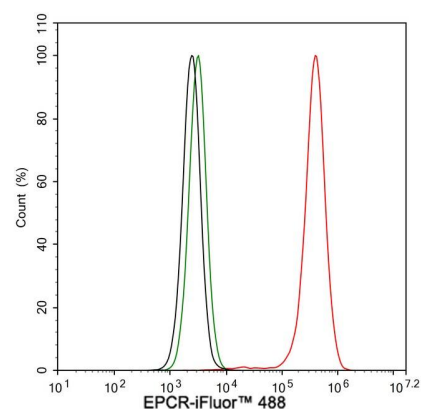
Cells were fixed in 100% precooled methanol for 5 minutes at room temperature, then blocked with 1% BSA in 10% negative goat serum for 1 hour at room temperature. Cells were then incubated with Rabbit anti-EPCR antibody (NBP3-32311) at 1/100 dilution in 1% BSA in PBST overnight at 4°C. Goat Anti-Rabbit IgG H&L (iFluor™ 488) was used as the secondary antibody at 1/1,000 dilution. PBS instead of the primary antibody was used as the secondary antibody only control. Nuclear DNA was labelled in blue with DAPI.



Beta tubulin (red) was stained at 1/100 dilution overnight at +4°C. Goat Anti-Mouse IgG H&L (iFluor™ 594) was used as the secondary antibody at 1/1,000 dilution.

Flow Cytometry: EPCR Antibody (PSH03-50) [NBP3-32311] - Flow cytometric analysis of EA.hy926 cells labeling EPCR.

Cells were washed twice with cold PBS and resuspend. Then stained with the primary antibody (NBP3-32311, 1µg/mL) (red) compared with Rabbit IgG Isotype Control (green). After incubation of the primary antibody at +4°C for an hour, the cells were stained with a iFluor™ 488 conjugate-Goat anti-Rabbit IgG Secondary antibody at 1/1,000 dilution for 30 minutes at +4°C. Unlabelled sample was used as a control (cells without incubation with primary antibody; black).





### **Novus Biologicals USA**

10730 E. Briarwood Avenue  
Centennial, CO 80112  
USA  
Phone: 303.730.1950  
Toll Free: 1.888.506.6887  
Fax: 303.730.1966  
nb-customerservice@bio-techne.com

### **Bio-Techne Canada**

21 Canmotor Ave  
Toronto, ON M8Z 4E6  
Canada  
Phone: 905.827.6400  
Toll Free: 855.668.8722  
Fax: 905.827.6402  
canada.inquires@bio-techne.com

### **Bio-Techne Ltd**

19 Barton Lane  
Abingdon Science Park  
Abingdon, OX14 3NB, United Kingdom  
Phone: (44) (0) 1235 529449  
Free Phone: 0800 37 34 15  
Fax: (44) (0) 1235 533420  
info.EMEA@bio-techne.com

### **General Contact Information**

www.novusbio.com  
Technical Support: nb-technical@bio-techne.com  
Orders: nb-customerservice@bio-techne.com  
General: novus@novusbio.com

### **Products Related to NBP3-32311**

---

NBP2-33376H	Blue Marker Antibody (6F4-F6) [HRP]
HAF008	Goat anti-Rabbit IgG Secondary Antibody [HRP]
NB7160	Goat anti-Rabbit IgG (H+L) Secondary Antibody [HRP]
NBP2-24891	Rabbit IgG Isotype Control

---

### **Limitations**

This product is for research use only and is not approved for use in humans or in clinical diagnosis. Primary Antibodies are guaranteed for 1 year from date of receipt.

For more information on our 100% guarantee, please visit [www.novusbio.com/guarantee](http://www.novusbio.com/guarantee)

Earn gift cards/discounts by submitting a review: [www.novusbio.com/reviews/submit/NBP3-32311](http://www.novusbio.com/reviews/submit/NBP3-32311)

Earn gift cards/discounts by submitting a publication using this product:  
[www.novusbio.com/publications](http://www.novusbio.com/publications)

