

Product Datasheet

eEF-2 Antibody (JE32-57)

NBP3-32293

Unit Size: 100 ul

Store at 4C short term. Aliquot and store at -20C long term. Avoid freeze-thaw cycles.

www.novusbio.com



technical@novusbio.com

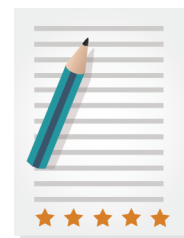
Protocols, Publications, Related Products, Reviews, Research Tools and Images at:
www.novusbio.com/NBP3-32293

Updated 9/9/2025 v.20.1

Earn rewards for product
reviews and publications.

Submit a publication at www.novusbio.com/publications

Submit a review at www.novusbio.com/reviews/destination/NBP3-32293



NBP3-32293

eEF-2 Antibody (JE32-57)

Product Information	
Unit Size	100 ul
Concentration	1 mg/ml
Storage	Store at 4C short term. Aliquot and store at -20C long term. Avoid freeze-thaw cycles.
Clonality	Monoclonal
Clone	JE32-57
Preservative	0.05% Sodium Azide
Isotype	IgG
Purity	Protein A purified
Buffer	1*TBS (pH7.4), 0.05% BSA and 40% Glycerol
Target Molecular Weight	95 kDa

Product Description	
Description	Novus Biologicals Rabbit eEF-2 Antibody (JE32-57) (NBP3-32293) is a recombinant monoclonal antibody validated for use in WB, Flow and ICC/IF. All Novus Biologicals antibodies are covered by our 100% guarantee.
Host	Rabbit
Gene ID	1938
Gene Symbol	EEF2
Species	Human, Mouse, Rat
Immunogen	Synthetic peptide within Human eEF-2 aa 809-858 / 858. (Uniprot: P13639)

Product Application Details	
Applications	Western Blot, Flow Cytometry, Immunocytochemistry/ Immunofluorescence
Recommended Dilutions	Western Blot 1:1000-1:2000, Flow Cytometry 1:500-1:1000, Immunocytochemistry/ Immunofluorescence 1:250



Images

Western Blot: eEF-2 Antibody (JE32-57) [NBP3-32293] - Western blot analysis of eEF-2 on different lysates with Rabbit anti-eEF-2 antibody (NBP3-32293) at 1/1,000 dilution.

Lane 1: HeLa cell lysate (20 ug/Lane)
 Lane 2: Jurkat cell lysate (20 ug/Lane)
 Lane 3: NIH/3T3 cell lysate (20 ug/Lane)
 Lane 4: PC-12 cell lysate (20 ug/Lane)
 Lane 5: Mouse liver tissue lysate (40 ug/Lane)
 Lane 6: Rat spleen tissue lysate (40 ug/Lane)

Predicted band size: 95 kDa
 Observed band size: 95 kDa

Exposure time: 8 seconds;

4-20% SDS-PAGE gel.

Proteins were transferred to a PVDF membrane and blocked with 5% NFDN/TBST for 1 hour at room temperature. The primary antibody (NBP3-32293) at 1/1,000 dilution was used in 5% NFDN/TBST at room temperature for 2 hours. Goat Anti-Rabbit IgG - HRP Secondary Antibody at 1:100,000 dilution was used for 1 hour at room temperature.

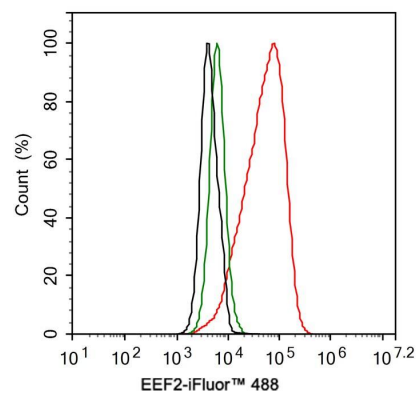
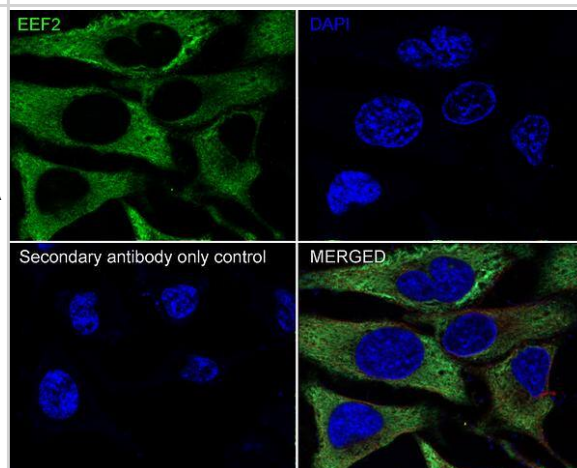
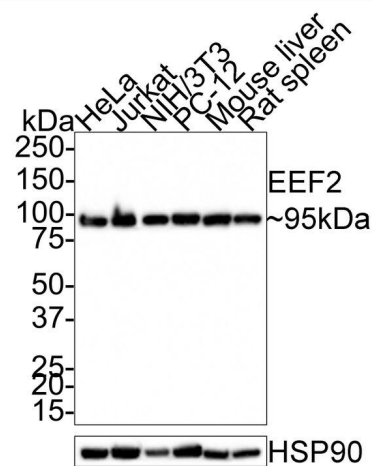
Immunocytochemistry/ Immunofluorescence: eEF-2 Antibody (JE32-57) [NBP3-32293] - Immunocytochemistry analysis of HeLa cells labeling eEF-2 with Rabbit anti-eEF-2 antibody (NBP3-32293) at 1/250 dilution.

Cells were fixed in 100% methanol for 10 minutes, permeabilized with 0.1% Triton X-100 in PBS for 15 minutes, and then blocked with 1% BSA for 30 minutes at room temperature. Cells were then incubated with Rabbit anti-eEF-2 antibody (NBP3-32293) at 1/250 dilution in 2% negative goat serum overnight at 4 °C. Goat Anti-Rabbit IgG H&L (iFluor™ 488) was used as the secondary antibody at 1/1,000 dilution. Nuclear DNA was labelled in blue with DAPI.

Beta tubulin (red) was stained at 1/100 dilution overnight at +4 °C. Goat Anti-Mouse IgG H&L (iFluor™ 594) was used as the secondary antibody at 1/1,000 dilution.

Flow Cytometry: eEF-2 Antibody (JE32-57) [NBP3-32293] - Flow cytometric analysis of HeLa cells labeling eEF-2.

Cells were fixed and permeabilized. Then stained with the primary antibody (NBP3-32293, 1ug/ml) (red) compared with Rabbit IgG Isotype Control (green). After incubation of the primary antibody at +4 °C for an hour, the cells were stained with a iFluor™ 488 conjugate-Goat anti-Rabbit IgG Secondary antibody at 1/1,000 dilution for 30 minutes at +4 °C. Unlabelled sample was used as a control (cells without incubation with primary antibody; black).





Novus Biologicals USA

10730 E. Briarwood Avenue
Centennial, CO 80112
USA
Phone: 303.730.1950
Toll Free: 1.888.506.6887
Fax: 303.730.1966
nb-customerservice@bio-techne.com

Bio-Techne Canada

21 Canmotor Ave
Toronto, ON M8Z 4E6
Canada
Phone: 905.827.6400
Toll Free: 855.668.8722
Fax: 905.827.6402
canada.inquires@bio-techne.com

Bio-Techne Ltd

19 Barton Lane
Abingdon Science Park
Abingdon, OX14 3NB, United Kingdom
Phone: (44) (0) 1235 529449
Free Phone: 0800 37 34 15
Fax: (44) (0) 1235 533420
info.EMEA@bio-techne.com

General Contact Information

www.novusbio.com
Technical Support: nb-technical@bio-techne.com
Orders: nb-customerservice@bio-techne.com
General: novus@novusbio.com

Products Related to NBP3-32293

NBP2-33376H	Blue Marker Antibody (6F4-F6) [HRP]
HAF008	Goat anti-Rabbit IgG Secondary Antibody [HRP]
NB7160	Goat anti-Rabbit IgG (H+L) Secondary Antibody [HRP]
NBP2-24891	Rabbit IgG Isotype Control

Limitations

This product is for research use only and is not approved for use in humans or in clinical diagnosis. Primary Antibodies are guaranteed for 1 year from date of receipt.

For more information on our 100% guarantee, please visit www.novusbio.com/guarantee

Earn gift cards/discounts by submitting a review: www.novusbio.com/reviews/submit/NBP3-32293

Earn gift cards/discounts by submitting a publication using this product:
www.novusbio.com/publications

