

Product Datasheet

Casein Kinase 2 alpha Antibody (PSH04-54) NBP3-32228

Unit Size: 100 ul

Store at 4C short term. Aliquot and store at -20C long term. Avoid freeze-thaw cycles.

www.novusbio.com



technical@novusbio.com

Protocols, Publications, Related Products, Reviews, Research Tools and Images at:
www.novusbio.com/NBP3-32228

Updated 9/9/2025 v.20.1

Earn rewards for product
reviews and publications.

Submit a publication at www.novusbio.com/publications

Submit a review at www.novusbio.com/reviews/destination/NBP3-32228



NBP3-32228

Casein Kinase 2 alpha Antibody (PSH04-54)

| Product Information | |
|-------------------------|--|
| Unit Size | 100 ul |
| Concentration | 1 mg/ml |
| Storage | Store at 4C short term. Aliquot and store at -20C long term. Avoid freeze-thaw cycles. |
| Clonality | Monoclonal |
| Clone | PSH04-54 |
| Preservative | 0.05% Sodium Azide |
| Isotype | IgG |
| Purity | Protein A purified |
| Buffer | PBS (pH7.4), 0.1% BSA and 40% Glycerol |
| Target Molecular Weight | 45 kDa |

| Product Description | |
|---------------------|---|
| Description | Novus Biologicals Rabbit Casein Kinase 2 alpha Antibody (PSH04-54) (NBP3-32228) is a recombinant monoclonal antibody validated for use in IHC, WB, Flow and ICC/IF. All Novus Biologicals antibodies are covered by our 100% guarantee. |
| Host | Rabbit |
| Gene ID | 1457 |
| Gene Symbol | CSNK2A1 |
| Species | Human, Mouse, Rat |
| Immunogen | Synthetic peptide within human Casein Kinase 2 alpha aa 342-391 / 391. (Uniprot: P68400) |

| Product Application Details | |
|-----------------------------|--|
| Applications | Western Blot, Immunohistochemistry-Paraffin, Flow Cytometry, Immunocytochemistry/ Immunofluorescence, Immunohistochemistry |
| Recommended Dilutions | Western Blot 1:2000, Flow Cytometry 1:1000, Immunohistochemistry, Immunocytochemistry/ Immunofluorescence 1:500-1:1000, Immunohistochemistry-Paraffin 1:1000 |



Images

Western Blot: Casein Kinase 2 alpha Antibody (PSH04-54) [NBP3-32228] - Western blot analysis of Casein Kinase 2 alpha on different lysates with Rabbit anti-Casein Kinase 2 alpha antibody (NBP3-32228) at 1/2,000 dilution.

Lane 1: HeLa cell lysate
 Lane 2: HCT 116 cell lysate
 Lane 3: NIH/3T3 cell lysate
 Lane 4: C2C12 cell lysate
 Lane 5: PC-12 cell lysate
 Lane 6: Mouse testis tissue lysate
 Lane 7: Rat testis tissue lysate

Lysates/proteins at 30 ug/Lane.

Predicted band size: 45 kDa
 Observed band size: 40 kDa

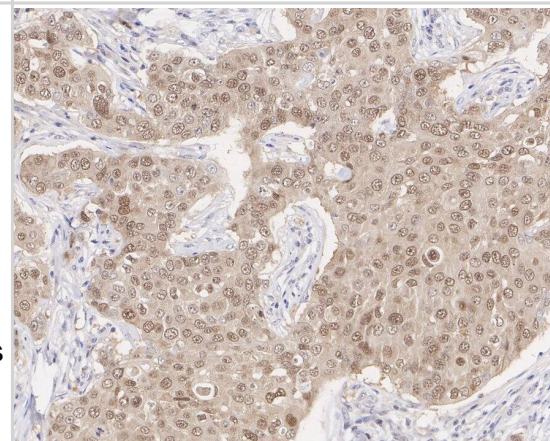
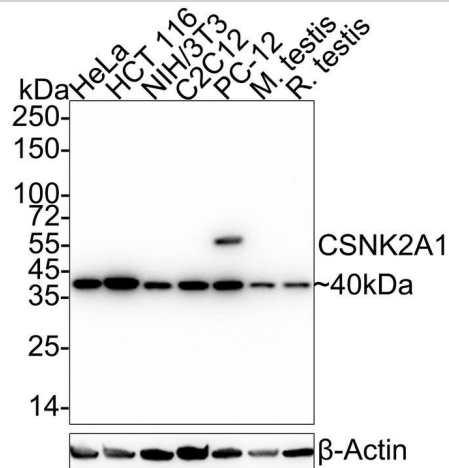
Exposure time: 40 seconds; ECL;

4-20% SDS-PAGE gel.

Proteins were transferred to a PVDF membrane and blocked with 5% NFDM/TBST for 1 hour at room temperature. The primary antibody (NBP3-32228) at 1/2,000 dilution was used in 5% NFDM/TBST at 4C overnight. Goat Anti-Rabbit IgG - HRP Secondary Antibody at 1/50,000 dilution was used for 1 hour at room temperature.

Immunohistochemistry: Casein Kinase 2 alpha Antibody (PSH04-54) [NBP3-32228] - Immunohistochemical analysis of paraffin-embedded human breast cancer tissue with Rabbit anti-Casein Kinase 2 alpha antibody (NBP3-32228) at 1/1,000 dilution.

The section was pre-treated using heat mediated antigen retrieval with sodium citrate buffer (pH 6.0) for 2 minutes. The tissues were blocked in 1% BSA for 20 minutes at room temperature, washed with ddH₂O and PBS, and then probed with the primary antibody (NBP3-32228) at 1/1,000 dilution for 1 hour at room temperature. The detection was performed using an HRP conjugated compact polymer system. DAB was used as the chromogen. Tissues were counterstained with hematoxylin and mounted with DPX.



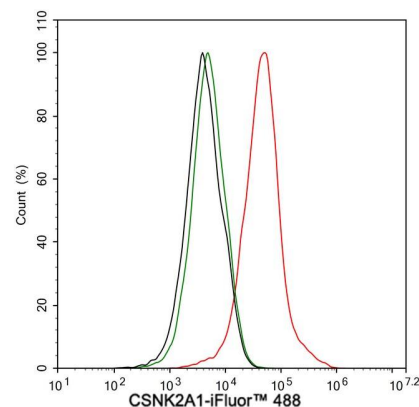
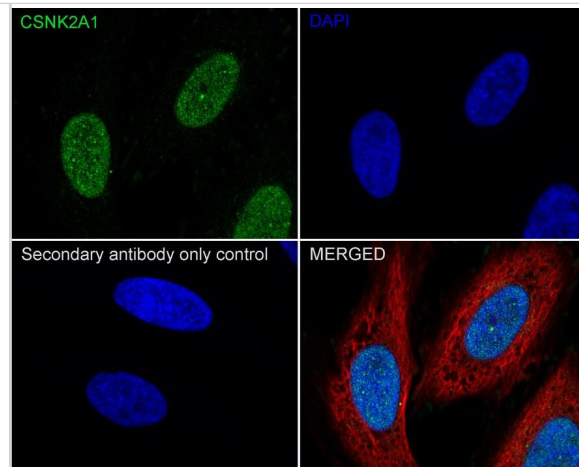
Immunocytochemistry/ Immunofluorescence: Casein Kinase 2 alpha Antibody (PSH04-54) [NBP3-32228] - Immunocytochemistry analysis of HeLa cells labeling Casein Kinase 2 alpha with Rabbit anti-Casein Kinase 2 alpha antibody (NBP3-32228) at 1/500 dilution.

Cells were fixed in 4% paraformaldehyde for 20 minutes at room temperature, permeabilized with 0.1% Triton X-100 in PBS for 5 minutes at room temperature, then blocked with 1% BSA in 10% negative goat serum for 1 hour at room temperature. Cells were then incubated with Rabbit anti-Casein Kinase 2 alpha antibody (NBP3-32228) at 1/500 dilution in 1% BSA in PBST overnight at 4 °C. Goat Anti-Rabbit IgG H&L (iFluor™ 488) was used as the secondary antibody at 1/1,000 dilution. PBS instead of the primary antibody was used as the secondary antibody only control. Nuclear DNA was labelled in blue with DAPI.

Beta tubulin (red) was stained at 1/100 dilution overnight at +4 °C. Goat Anti-Mouse IgG H&L (iFluor™ 594) was used as the secondary antibody at 1/1,000 dilution.

Flow Cytometry: Casein Kinase 2 alpha Antibody (PSH04-54) [NBP3-32228] - Flow cytometric analysis of HeLa cells labeling Casein Kinase 2 alpha.

Cells were fixed and permeabilized. Then stained with the primary antibody (NBP3-32228, 1 µg/mL) (red) compared with Rabbit IgG Isotype Control (green). After incubation of the primary antibody at +4 °C for an hour, the cells were stained with a iFluor™ 488 conjugate-Goat anti-Rabbit IgG Secondary antibody at 1/1,000 dilution for 30 minutes at +4 °C. Unlabelled sample was used as a control (cells without incubation with primary antibody; black).





Novus Biologicals USA

10730 E. Briarwood Avenue
Centennial, CO 80112
USA
Phone: 303.730.1950
Toll Free: 1.888.506.6887
Fax: 303.730.1966
nb-customerservice@bio-techne.com

Bio-Techne Canada

21 Canmotor Ave
Toronto, ON M8Z 4E6
Canada
Phone: 905.827.6400
Toll Free: 855.668.8722
Fax: 905.827.6402
canada.inquires@bio-techne.com

Bio-Techne Ltd

19 Barton Lane
Abingdon Science Park
Abingdon, OX14 3NB, United Kingdom
Phone: (44) (0) 1235 529449
Free Phone: 0800 37 34 15
Fax: (44) (0) 1235 533420
info.EMEA@bio-techne.com

General Contact Information

www.novusbio.com
Technical Support: nb-technical@bio-techne.com
Orders: nb-customerservice@bio-techne.com
General: novus@novusbio.com

Products Related to NBP3-32228

| | |
|-------------|---|
| NBP2-33376H | Blue Marker Antibody (6F4-F6) [HRP] |
| HAF008 | Goat anti-Rabbit IgG Secondary Antibody [HRP] |
| NB7160 | Goat anti-Rabbit IgG (H+L) Secondary Antibody [HRP] |
| NBP2-24891 | Rabbit IgG Isotype Control |

Limitations

This product is for research use only and is not approved for use in humans or in clinical diagnosis. Primary Antibodies are guaranteed for 1 year from date of receipt.

For more information on our 100% guarantee, please visit www.novusbio.com/guarantee

Earn gift cards/discounts by submitting a review: www.novusbio.com/reviews/submit/NBP3-32228

Earn gift cards/discounts by submitting a publication using this product:
www.novusbio.com/publications

