

# Product Datasheet

## TORC3/CRTC3 Antibody (JE63-18) NBP3-32226

Unit Size: 100 ul

Store at 4C short term. Aliquot and store at -20C long term. Avoid freeze-thaw cycles.

[www.novusbio.com](http://www.novusbio.com)



[technical@novusbio.com](mailto:technical@novusbio.com)

Protocols, Publications, Related Products, Reviews, Research Tools and Images at:  
[www.novusbio.com/NBP3-32226](http://www.novusbio.com/NBP3-32226)

Updated 9/9/2025 v.20.1

Earn rewards for product  
reviews and publications.

Submit a publication at [www.novusbio.com/publications](http://www.novusbio.com/publications)

Submit a review at [www.novusbio.com/reviews/destination/NBP3-32226](http://www.novusbio.com/reviews/destination/NBP3-32226)



**NBP3-32226****TORC3/CRTC3 Antibody (JE63-18)**

<b>Product Information</b>	
<b>Unit Size</b>	100 ul
<b>Concentration</b>	1 mg/ml
<b>Storage</b>	Store at 4C short term. Aliquot and store at -20C long term. Avoid freeze-thaw cycles.
<b>Clonality</b>	Monoclonal
<b>Clone</b>	JE63-18
<b>Preservative</b>	0.05% Sodium Azide
<b>Isotype</b>	IgG
<b>Purity</b>	Protein A purified
<b>Buffer</b>	1*TBS (pH7.4), 0.05% BSA and 40% Glycerol
<b>Target Molecular Weight</b>	67 kDa

<b>Product Description</b>	
<b>Description</b>	Novus Biologicals Rabbit TORC3/CRTC3 Antibody (JE63-18) (NBP3-32226) is a recombinant monoclonal antibody validated for use in IHC, WB and Flow. All Novus Biologicals antibodies are covered by our 100% guarantee.
<b>Host</b>	Rabbit
<b>Gene ID</b>	64784
<b>Gene Symbol</b>	CRTC3
<b>Species</b>	Human, Mouse, Rat, Monkey
<b>Immunogen</b>	Synthetic peptide within Human TORC3/CRTC3 aa 570-219 / 619. (Uniprot: Q6UUV7)

<b>Product Application Details</b>	
<b>Applications</b>	Western Blot, Immunohistochemistry-Paraffin, Flow Cytometry, Immunohistochemistry
<b>Recommended Dilutions</b>	Western Blot 1:2000, Flow Cytometry 1:1000, Immunohistochemistry, Immunohistochemistry-Paraffin 1:500



## Images

**Western Blot: TORC3/CRTC3 Antibody (JE63-18) [NBP3-32226]** - Western blot analysis of TORC3/CRTC3 on different lysates with Rabbit anti-TORC3/CRTC3 antibody (NBP3-32226) at 1/2,000 dilution.

Lane 1: HeLa cell lysate  
 Lane 2: TT cell lysate  
 Lane 3: Jurkat cell lysate  
 Lane 4: HDLM-2 cell lysate  
 Lane 5: HEK-293 cell lysate  
 Lane 6: COS-1 cell lysate  
 Lane 7: RAW264.7 cell lysate  
 Lane 8: NIH/3T3 cell lysate  
 Lane 9: PC-12 cell lysate  
 Lane 10: C6 cell lysate

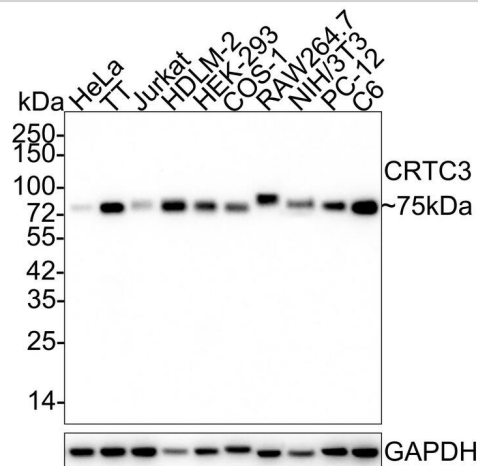
Lysates/proteins at 20 ug/Lane.

Predicted band size: 67 kDa  
 Observed band size: 75 kDa

Exposure time: 5 minutes;

4-20% SDS-PAGE gel.

Proteins were transferred to a PVDF membrane and blocked with 5% NFDM/TBST for 1 hour at room temperature. The primary antibody (NBP3-32226) at 1/2,000 dilution was used in 5% NFDM/TBST at 4C overnight. Goat Anti-Rabbit IgG - HRP Secondary Antibody at 1/50,000 dilution was used for 1 hour at room temperature.



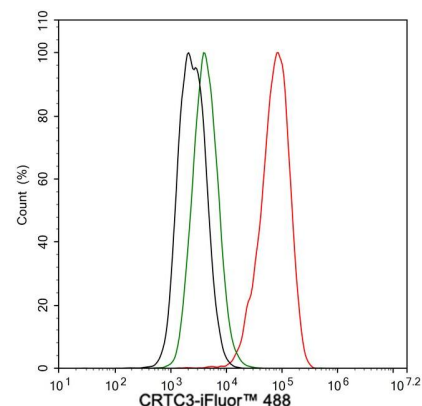
**Immunohistochemistry: TORC3/CRTC3 Antibody (JE63-18) [NBP3-32226]** - Immunohistochemical analysis of paraffin-embedded human brain tissue with Rabbit anti-TORC3/CRTC3 antibody (NBP3-32226) at 1/500 dilution.

The section was pre-treated using heat mediated antigen retrieval with Tris-EDTA buffer (pH 9.0) for 20 minutes. The tissues were blocked in 1% BSA for 20 minutes at room temperature, washed with ddH<sub>2</sub>O and PBS, and then probed with the primary antibody (NBP3-32226) at 1/500 dilution for 1 hour at room temperature. The detection was performed using an HRP conjugated compact polymer system. DAB was used as the chromogen. Tissues were counterstained with hematoxylin and mounted with DPX.



**Flow Cytometry: TORC3/CRTC3 Antibody (JE63-18) [NBP3-32226]** - Flow cytometric analysis of TT cells labeling TORC3/CRTC3.

Cells were fixed and permeabilized. Then stained with the primary antibody (NBP3-32226, 1 µg/mL) (red) compared with Rabbit IgG Isotype Control (green). After incubation of the primary antibody at +4 °C for an hour, the cells were stained with a iFluor™ 488 conjugate-Goat anti-Rabbit IgG Secondary antibody at 1/1,000 dilution for 30 minutes at +4 °C. Unlabelled sample was used as a control (cells without incubation with primary antibody; black).





### **Novus Biologicals USA**

10730 E. Briarwood Avenue  
Centennial, CO 80112  
USA  
Phone: 303.730.1950  
Toll Free: 1.888.506.6887  
Fax: 303.730.1966  
nb-customerservice@bio-techne.com

### **Bio-Techne Canada**

21 Canmotor Ave  
Toronto, ON M8Z 4E6  
Canada  
Phone: 905.827.6400  
Toll Free: 855.668.8722  
Fax: 905.827.6402  
canada.inquires@bio-techne.com

### **Bio-Techne Ltd**

19 Barton Lane  
Abingdon Science Park  
Abingdon, OX14 3NB, United Kingdom  
Phone: (44) (0) 1235 529449  
Free Phone: 0800 37 34 15  
Fax: (44) (0) 1235 533420  
info.EMEA@bio-techne.com

### **General Contact Information**

www.novusbio.com  
Technical Support: nb-technical@bio-techne.com  
Orders: nb-customerservice@bio-techne.com  
General: novus@novusbio.com

### **Products Related to NBP3-32226**

---

NBP2-33376H	Blue Marker Antibody (6F4-F6) [HRP]
HAF008	Goat anti-Rabbit IgG Secondary Antibody [HRP]
NB7160	Goat anti-Rabbit IgG (H+L) Secondary Antibody [HRP]
NBP2-24891	Rabbit IgG Isotype Control

---

### **Limitations**

This product is for research use only and is not approved for use in humans or in clinical diagnosis. Primary Antibodies are guaranteed for 1 year from date of receipt.

For more information on our 100% guarantee, please visit [www.novusbio.com/guarantee](http://www.novusbio.com/guarantee)

Earn gift cards/discounts by submitting a review: [www.novusbio.com/reviews/submit/NBP3-32226](http://www.novusbio.com/reviews/submit/NBP3-32226)

Earn gift cards/discounts by submitting a publication using this product:  
[www.novusbio.com/publications](http://www.novusbio.com/publications)

