

# Product Datasheet

## CARD9 Antibody (PSH0-41)

### NBP3-32106

Unit Size: 100 ul

Store at 4C short term. Aliquot and store at -20C long term. Avoid freeze-thaw cycles.

[www.novusbio.com](http://www.novusbio.com)



[technical@novusbio.com](mailto:technical@novusbio.com)

Protocols, Publications, Related Products, Reviews, Research Tools and Images at:  
[www.novusbio.com/NBP3-32106](http://www.novusbio.com/NBP3-32106)

Updated 9/9/2025 v.20.1

Earn rewards for product reviews and publications.

Submit a publication at [www.novusbio.com/publications](http://www.novusbio.com/publications)

Submit a review at [www.novusbio.com/reviews/destination/NBP3-32106](http://www.novusbio.com/reviews/destination/NBP3-32106)



**NBP3-32106****CARD9 Antibody (PSH0-41)**

<b>Product Information</b>	
<b>Unit Size</b>	100 ul
<b>Concentration</b>	1 mg/ml
<b>Storage</b>	Store at 4C short term. Aliquot and store at -20C long term. Avoid freeze-thaw cycles.
<b>Clonality</b>	Monoclonal
<b>Clone</b>	PSH0-41
<b>Preservative</b>	0.05% Sodium Azide
<b>Isotype</b>	IgG
<b>Purity</b>	Protein A purified
<b>Buffer</b>	PBS (pH7.4), 0.1% BSA and 40% Glycerol
<b>Target Molecular Weight</b>	62.2 kDa

<b>Product Description</b>	
<b>Description</b>	Novus Biologicals Rabbit CARD9 Antibody (PSH0-41) (NBP3-32106) is a recombinant monoclonal antibody validated for use in WB, Flow and ICC/IF. All Novus Biologicals antibodies are covered by our 100% guarantee.
<b>Host</b>	Rabbit
<b>Gene ID</b>	64170
<b>Gene Symbol</b>	CARD9
<b>Species</b>	Human, Mouse, Rat
<b>Immunogen</b>	Recombinant protein within human CARD9 aa 1-200 / 536. (Uniprot: Q9H257)

<b>Product Application Details</b>	
<b>Applications</b>	Western Blot, Flow Cytometry, Immunocytochemistry/ Immunofluorescence
<b>Recommended Dilutions</b>	Western Blot 1:1000, Flow Cytometry 1:500-1:1000, Immunocytochemistry/ Immunofluorescence 1:100



## Images

Western Blot: CARD9 Antibody (PSH0-41) [NBP3-32106] - Western blot analysis of CARD9 on different lysates with Rabbit anti-CARD9 antibody (NBP3-32106) at 1/1,000 dilution.

Lane 1: HL-60 cell lysate  
Lane 2: THP-1 cell lysate  
Lane 3: RAW264.7 cell lysate  
Lane 4: PC-12 cell lysate

Lysates/proteins at 20 ug/Lane.

Predicted band size: 62.2 kDa  
Observed band size: 70 kDa

Exposure time: 24 seconds;

4-20% SDS-PAGE gel.

Proteins were transferred to a PVDF membrane and blocked with 5% NFDm/TBST for 1 hour at room temperature. The primary antibody (NBP3-32106) at 1/1,000 dilution was used in 5% NFDm/TBST at room temperature for 2 hours. Goat Anti-Rabbit IgG - HRP Secondary Antibody at 1:200,000 dilution was used for 1 hour at room temperature.

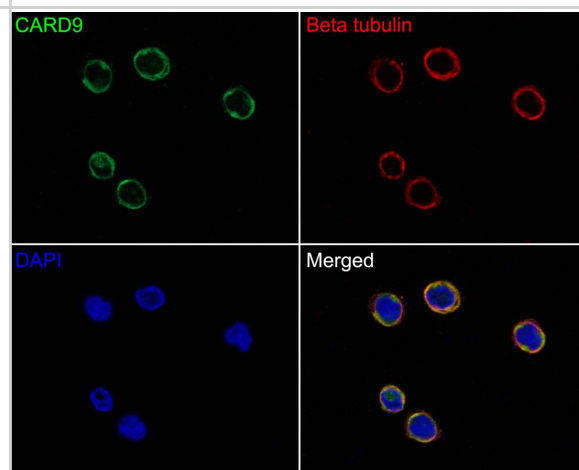
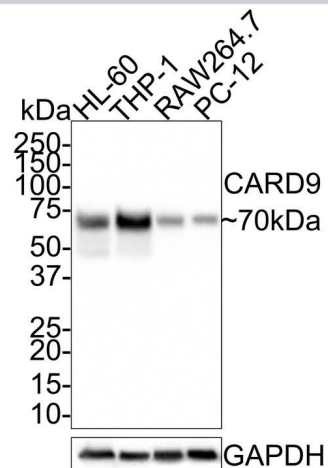
Immunocytochemistry/ Immunofluorescence: CARD9 Antibody (PSH0-41) [NBP3-32106] - Immunocytochemistry analysis of THP-1 cells labeling CARD9 with Rabbit anti-CARD9 antibody (NBP3-32106) at 1/100 dilution.

Cells were fixed in 4% paraformaldehyde for 10 minutes at 37 °C, permeabilized with 0.05% Triton X-100 in PBS for 20 minutes, and then blocked with 2% negative goat serum for 30 minutes at room temperature. Cells were then incubated with Rabbit anti-CARD9 antibody (NBP3-32106) at 1/100 dilution in 2% negative goat serum overnight at 4 °C. Goat Anti-Rabbit IgG H&L (iFluor™ 488) was used as the secondary antibody at 1/1,000 dilution. Nuclear DNA was labelled in blue with DAPI.

Beta tubulin (red) was stained at 1/100 dilution overnight at +4 °C. Goat Anti-Mouse IgG H&L (iFluor™ 594) was used as the secondary antibody at 1/1,000 dilution.

Flow Cytometry: CARD9 Antibody (PSH0-41) [NBP3-32106] - Flow cytometric analysis of THP-1 cells labeling CARD9.

Cells were fixed and permeabilized. Then stained with the primary antibody (NBP3-32106, 1ug/ml) (red) compared with Rabbit IgG Isotype Control (green). After incubation of the primary antibody at +4 °C for an hour, the cells were stained with a iFluor™ 488 conjugate-Goat anti-Rabbit IgG Secondary antibody at 1/1,000 dilution for 30 minutes at +4 °C. Unlabelled sample was used as a control (cells without incubation with primary antibody; black).





### **Novus Biologicals USA**

10730 E. Briarwood Avenue  
Centennial, CO 80112  
USA  
Phone: 303.730.1950  
Toll Free: 1.888.506.6887  
Fax: 303.730.1966  
nb-customerservice@bio-techne.com

### **Bio-Techne Canada**

21 Canmotor Ave  
Toronto, ON M8Z 4E6  
Canada  
Phone: 905.827.6400  
Toll Free: 855.668.8722  
Fax: 905.827.6402  
canada.inquires@bio-techne.com

### **Bio-Techne Ltd**

19 Barton Lane  
Abingdon Science Park  
Abingdon, OX14 3NB, United Kingdom  
Phone: (44) (0) 1235 529449  
Free Phone: 0800 37 34 15  
Fax: (44) (0) 1235 533420  
info.EMEA@bio-techne.com

### **General Contact Information**

www.novusbio.com  
Technical Support: nb-technical@bio-techne.com  
Orders: nb-customerservice@bio-techne.com  
General: novus@novusbio.com

### **Products Related to NBP3-32106**

---

NBP2-33376H	Blue Marker Antibody (6F4-F6) [HRP]
HAF008	Goat anti-Rabbit IgG Secondary Antibody [HRP]
NB7160	Goat anti-Rabbit IgG (H+L) Secondary Antibody [HRP]
NBP2-24891	Rabbit IgG Isotype Control

---

### **Limitations**

This product is for research use only and is not approved for use in humans or in clinical diagnosis. Primary Antibodies are guaranteed for 1 year from date of receipt.

For more information on our 100% guarantee, please visit [www.novusbio.com/guarantee](http://www.novusbio.com/guarantee)

Earn gift cards/discounts by submitting a review: [www.novusbio.com/reviews/submit/NBP3-32106](http://www.novusbio.com/reviews/submit/NBP3-32106)

Earn gift cards/discounts by submitting a publication using this product:  
[www.novusbio.com/publications](http://www.novusbio.com/publications)

