

Product Datasheet

beta Tubulin Antibody (A1-A4-R) NBP3-32081

Unit Size: 100 ul

Store at 4C short term. Aliquot and store at -20C long term. Avoid freeze-thaw cycles.

www.novusbio.com



technical@novusbio.com

Protocols, Publications, Related Products, Reviews, Research Tools and Images at:
www.novusbio.com/NBP3-32081

Updated 9/9/2025 v.20.1

Earn rewards for product
reviews and publications.

Submit a publication at www.novusbio.com/publications

Submit a review at www.novusbio.com/reviews/destination/NBP3-32081



NBP3-32081

beta Tubulin Antibody (A1-A4-R)

Product Information	
Unit Size	100 ul
Concentration	1 mg/ml
Storage	Store at 4C short term. Aliquot and store at -20C long term. Avoid freeze-thaw cycles.
Clonality	Monoclonal
Clone	A1-A4-R
Preservative	0.05% Sodium Azide
Isotype	IgG1
Purity	Protein A purified
Buffer	PBS (pH7.4), 0.1% BSA and 40% Glycerol
Target Molecular Weight	50 kDa
Product Description	
Description	Novus Biologicals Mouse beta Tubulin Antibody (A1-A4-R) (NBP3-32081) is a recombinant monoclonal antibody validated for use in IHC, WB, Flow and ICC/IF. All Novus Biologicals antibodies are covered by our 100% guarantee.
Host	Mouse
Gene ID	203068
Gene Symbol	TUBB
Species	Human, Mouse, Rat, Monkey
Immunogen	Synthetic peptide within Human beta Tubulin aa 151-200 / 444. (Uniprot: P07437)
Product Application Details	
Applications	Western Blot, Immunohistochemistry-Paraffin, Flow Cytometry, Immunocytochemistry/ Immunofluorescence, Immunohistochemistry
Recommended Dilutions	Western Blot 1:10000, Flow Cytometry 1:1000, Immunohistochemistry, Immunocytochemistry/ Immunofluorescence 1:100, Immunohistochemistry-Paraffin 1:10000

Images

Western Blot: beta Tubulin Antibody (A1-A4-R) [NBP3-32081] - Western blot analysis of beta Tubulin on different lysates with Mouse anti-beta Tubulin antibody (NBP3-32081) at 1/10,000 dilution.

Lane 1: HepG2 cell lysate (10 ug/Lane)
 Lane 2: A549 cell lysate (10 ug/Lane)
 Lane 3: NIH/3T3 cell lysate (10 ug/Lane)
 Lane 4: L-929 cell lysate (10 ug/Lane)
 Lane 5: PC-12 cell lysate (10 ug/Lane)
 Lane 6: C6 cell lysate (10 ug/Lane)
 Lane 7: Vero cell lysate (10 ug/Lane)
 Lane 8: COS-1 cell lysate (10 ug/Lane)
 Lane 9: Mouse spleen tissue lysate (20 ug/Lane)
 Lane 10: Mouse stomach tissue lysate (20 ug/Lane)
 Lane 11: Rat kidney tissue lysate (20 ug/Lane)

Predicted band size: 50 kDa
 Observed band size: 50 kDa

Exposure time: 24 seconds;

4-20% SDS-PAGE gel.

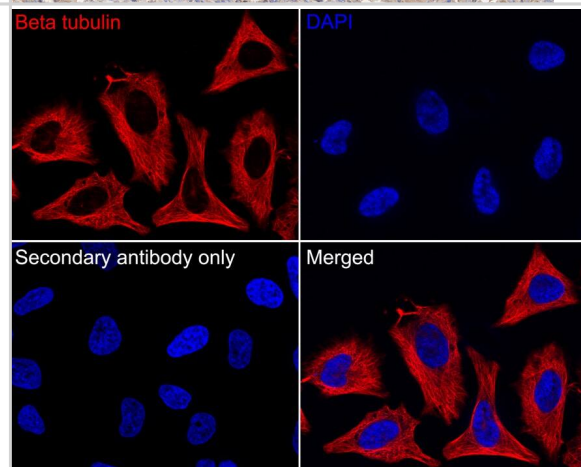
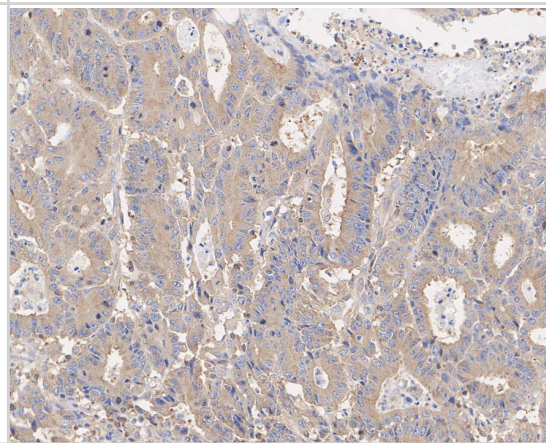
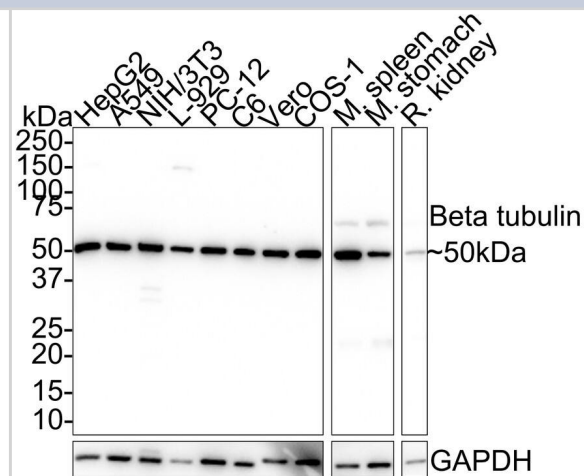
Proteins were transferred to a PVDF membrane and blocked with 5% NFDM/TBST for 1 hour at room temperature. The primary antibody (NBP3-32081) at 1/10,000 dilution was used in 5% NFDM/TBST at room temperature for 2 hours. Goat Anti-Mouse IgG - HRP Secondary Antibody at 1/50,000 dilution was used for 1 hour at room temperature.

Immunohistochemistry: beta Tubulin Antibody (A1-A4-R) [NBP3-32081] - Immunohistochemical analysis of paraffin-embedded human colon cancer tissue with Mouse anti-beta Tubulin antibody (NBP3-32081) at 1/10,000 dilution.

The section was pre-treated using heat mediated antigen retrieval with Tris-EDTA buffer (pH 9.0) for 20 minutes. The tissues were blocked in 1% BSA for 20 minutes at room temperature, washed with ddH₂O and PBS, and then probed with the primary antibody (NBP3-32081) at 1/10,000 dilution for 1 hour at room temperature. The detection was performed using an HRP conjugated compact polymer system. DAB was used as the chromogen. Tissues were counterstained with hematoxylin and mounted with DPX.

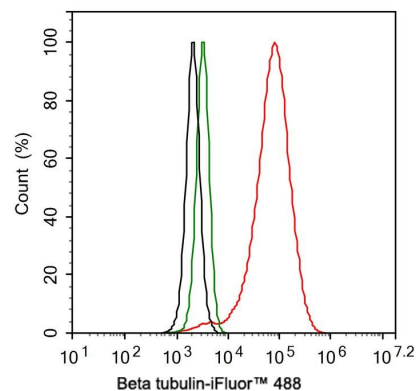
Immunocytochemistry/ Immunofluorescence: beta Tubulin Antibody (A1-A4-R) [NBP3-32081] - Immunocytochemistry analysis of HeLa cells labeling beta Tubulin with Mouse anti-beta Tubulin antibody (NBP3-32081) at 1/100 dilution.

Cells were fixed in 4% paraformaldehyde for 20 minutes at room temperature, permeabilized with 0.1% Triton X-100 in PBS for 5 minutes at room temperature, then blocked with 1% BSA in 10% negative goat serum for 1 hour at room temperature. Cells were then incubated with Mouse anti-beta Tubulin antibody (NBP3-32081) at 1/100 dilution in 1% BSA in PBST overnight at 4 °C. Goat Anti-Mouse IgG H&L (iFluor™ 594) was used as the secondary antibody at 1/1,000 dilution. PBS instead of the primary antibody was used as the secondary antibody only control. Nuclear DNA was labelled in blue with DAPI.



Flow Cytometry: beta Tubulin Antibody (A1-A4-R) [NBP3-32081] - Flow cytometric analysis of HeLa cells labeling beta Tubulin.

Cells were fixed and permeabilized. Then stained with the primary antibody (NBP3-32081, 1 µg/mL) (red) compared with Mouse IgG1 Isotype Control (green). After incubation of the primary antibody at +4□ for an hour, the cells were stained with a iFluor™ 488 conjugate-Goat anti-Mouse IgG Secondary antibody at 1/1,000 dilution for 30 minutes at +4□. Unlabelled sample was used as a control (cells without incubation with primary antibody; black).





Novus Biologicals USA

10730 E. Briarwood Avenue
Centennial, CO 80112
USA
Phone: 303.730.1950
Toll Free: 1.888.506.6887
Fax: 303.730.1966
nb-customerservice@bio-techne.com

Bio-Techne Canada

21 Canmotor Ave
Toronto, ON M8Z 4E6
Canada
Phone: 905.827.6400
Toll Free: 855.668.8722
Fax: 905.827.6402
canada.inquires@bio-techne.com

Bio-Techne Ltd

19 Barton Lane
Abingdon Science Park
Abingdon, OX14 3NB, United Kingdom
Phone: (44) (0) 1235 529449
Free Phone: 0800 37 34 15
Fax: (44) (0) 1235 533420
info.EMEA@bio-techne.com

General Contact Information

www.novusbio.com
Technical Support: nb-technical@bio-techne.com
Orders: nb-customerservice@bio-techne.com
General: novus@novusbio.com

Products Related to NBP3-32081

NBP2-33376H	Blue Marker Antibody (6F4-F6) [HRP]
HAF007	Goat anti-Mouse IgG Secondary Antibody [HRP]
NB7539	Goat anti-Mouse IgG (H+L) Secondary Antibody [HRP]
NBP1-97005-0.5mg	Mouse IgG1 Isotype Control (MG1)

Limitations

This product is for research use only and is not approved for use in humans or in clinical diagnosis. Primary Antibodies are guaranteed for 1 year from date of receipt.

For more information on our 100% guarantee, please visit www.novusbio.com/guarantee

Earn gift cards/discounts by submitting a review: www.novusbio.com/reviews/submit/NBP3-32081

Earn gift cards/discounts by submitting a publication using this product:
www.novusbio.com/publications

