

Product Datasheet

Aldehyde Dehydrogenase 1-A1/ALDH1A1 Antibody (8F1-R) NBP3-32019

Unit Size: 100 ul

Store at 4C short term. Aliquot and store at -20C long term. Avoid freeze-thaw cycles.

www.novusbio.com



technical@novusbio.com

Protocols, Publications, Related Products, Reviews, Research Tools and Images at:
www.novusbio.com/NBP3-32019

Updated 9/9/2025 v.20.1

Earn rewards for product
reviews and publications.

Submit a publication at www.novusbio.com/publications

Submit a review at www.novusbio.com/reviews/destination/NBP3-32019



NBP3-32019**Aldehyde Dehydrogenase 1-A1/ALDH1A1 Antibody (8F1-R)**

Product Information	
Unit Size	100 ul
Concentration	1 mg/ml
Storage	Store at 4C short term. Aliquot and store at -20C long term. Avoid freeze-thaw cycles.
Clonality	Monoclonal
Clone	8F1-R
Preservative	0.05% Sodium Azide
Isotype	IgG1
Purity	Protein A purified
Buffer	PBS (pH7.4), 0.1% BSA and 40% Glycerol
Target Molecular Weight	55 kDa
Product Description	
Description	Novus Biologicals Mouse Aldehyde Dehydrogenase 1-A1/ALDH1A1 Antibody (8F1-R) (NBP3-32019) is a recombinant monoclonal antibody validated for use in WB, Flow and ICC/IF. All Novus Biologicals antibodies are covered by our 100% guarantee.
Host	Mouse
Gene ID	216
Gene Symbol	ALDH1A1
Species	Human
Immunogen	Recombinant protein within Human Aldehyde Dehydrogenase 1-A1/ALDH1A1 aa 1-501 / 501. (Uniprot: P00352)
Product Application Details	
Applications	Western Blot, Flow Cytometry, Immunocytochemistry/ Immunofluorescence
Recommended Dilutions	Western Blot 1:1000, Flow Cytometry 1:1000, Immunocytochemistry/ Immunofluorescence 1:100

Images

Western Blot: Aldehyde Dehydrogenase 1-A1/ALDH1A1 Antibody (8F1-R) [NBP3-32019] - Western blot analysis of Aldehyde Dehydrogenase 1-A1/ALDH1A1 on different lysates with Mouse anti-Aldehyde Dehydrogenase 1-A1/ALDH1A1 antibody (NBP3-32019) at 1/1,000 dilution.

Lane 1: A549 cell lysate (20 ug/Lane)
 Lane 2: HT-29 cell lysate (20 ug/Lane)
 Lane 3: HepG2 cell lysate (20 ug/Lane)
 Lane 4: K-562 cell lysate (20 ug/Lane)
 Lane 5: Human liver tissue lysate (40 ug/Lane)
 Lane 6: Human lung tissue lysate (40 ug/Lane)

Predicted band size: 55 kDa
 Observed band size: 50 kDa

Exposure time: 1 minute;

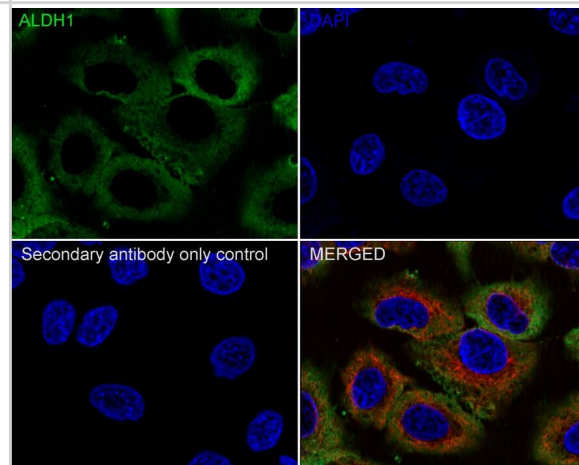
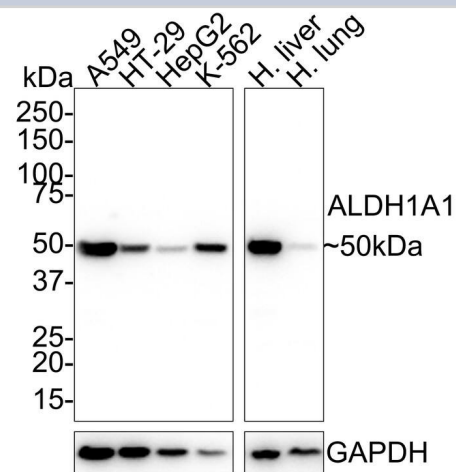
4-20% SDS-PAGE gel.

Proteins were transferred to a PVDF membrane and blocked with 5% NFDM/TBST for 1 hour at room temperature. The primary antibody (NBP3-32019) at 1/1,000 dilution was used in 5% NFDM/TBST at room temperature for 2 hours. Goat Anti-Mouse IgG - HRP Secondary Antibody at 1/50,000 dilution was used for 1 hour at room temperature.

Immunocytochemistry/ Immunofluorescence: Aldehyde Dehydrogenase 1-A1/ALDH1A1 Antibody (8F1-R) [NBP3-32019] - Immunocytochemistry analysis of A549 cells labeling Aldehyde Dehydrogenase 1-A1/ALDH1A1 with Mouse anti-Aldehyde Dehydrogenase 1-A1/ALDH1A1 antibody (NBP3-32019) at 1/100 dilution.

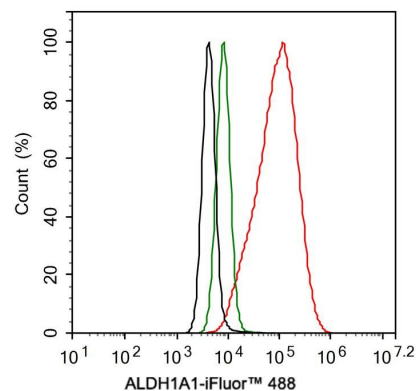
Cells were fixed in 4% paraformaldehyde for 20 minutes at room temperature, permeabilized with 0.1% Triton X-100 in PBS for 5 minutes at room temperature, then blocked with 1% BSA in 10% negative goat serum for 1 hour at room temperature. Cells were then incubated with Mouse anti-Aldehyde Dehydrogenase 1-A1/ALDH1A1 antibody (NBP3-32019) at 1/100 dilution in 1% BSA in PBST overnight at 4 °C. Goat Anti-Mouse IgG H&L (iFluor™ 488) was used as the secondary antibody at 1/1,000 dilution. PBS instead of the primary antibody was used as the secondary antibody only control. Nuclear DNA was labelled in blue with DAPI.

beta Tubulin (red) was stained at 1/100 dilution overnight at +4 °C. Goat Anti-Rabbit IgG H&L (iFluor™ 594) were used as the secondary antibody at 1/1,000 dilution.



Flow Cytometry: Aldehyde Dehydrogenase 1-A1/ALDH1A1 Antibody (8F1-R) [NBP3-32019] - Flow cytometric analysis of A549 cells labeling Aldehyde Dehydrogenase 1-A1/ALDH1A1.

Cells were fixed and permeabilized. Then stained with the primary antibody (NBP3-32019, 1 µg/mL) (red) compared with Mouse IgG1 Isotype Control (green). After incubation of the primary antibody at +4 °C for an hour, the cells were stained with a iFluor™ 488 conjugate-Goat anti-Mouse IgG Secondary antibody at 1/1,000 dilution for 30 minutes at +4 °C. Unlabelled sample was used as a control (cells without incubation with primary antibody; black).





Novus Biologicals USA

10730 E. Briarwood Avenue
Centennial, CO 80112
USA
Phone: 303.730.1950
Toll Free: 1.888.506.6887
Fax: 303.730.1966
nb-customerservice@bio-techne.com

Bio-Techne Canada

21 Canmotor Ave
Toronto, ON M8Z 4E6
Canada
Phone: 905.827.6400
Toll Free: 855.668.8722
Fax: 905.827.6402
canada.inquires@bio-techne.com

Bio-Techne Ltd

19 Barton Lane
Abingdon Science Park
Abingdon, OX14 3NB, United Kingdom
Phone: (44) (0) 1235 529449
Free Phone: 0800 37 34 15
Fax: (44) (0) 1235 533420
info.EMEA@bio-techne.com

General Contact Information

www.novusbio.com
Technical Support: nb-technical@bio-techne.com
Orders: nb-customerservice@bio-techne.com
General: novus@novusbio.com

Products Related to NBP3-32019

NBP2-33376H	Blue Marker Antibody (6F4-F6) [HRP]
HAF007	Goat anti-Mouse IgG Secondary Antibody [HRP]
NB7539	Goat anti-Mouse IgG (H+L) Secondary Antibody [HRP]
NBP1-97005-0.5mg	Mouse IgG1 Isotype Control (MG1)

Limitations

This product is for research use only and is not approved for use in humans or in clinical diagnosis. Primary Antibodies are guaranteed for 1 year from date of receipt.

For more information on our 100% guarantee, please visit www.novusbio.com/guarantee

Earn gift cards/discounts by submitting a review: www.novusbio.com/reviews/submit/NBP3-32019

Earn gift cards/discounts by submitting a publication using this product:
www.novusbio.com/publications

