

Product Datasheet

Human GnRH - Pre-Diluted ELISA Kit (Colorimetric) NBP3-31838

Unit Size: 1 Kit

Storage of components varies. See protocol for specific instructions.

www.novusbio.com



technical@novusbio.com

Protocols, Publications, Related Products, Reviews, Research Tools and Images at:
www.novusbio.com/NBP3-31838

Updated 6/1/2026 v.20.1

Earn rewards for product
reviews and publications.

Submit a publication at www.novusbio.com/publications

Submit a review at www.novusbio.com/reviews/destination/NBP3-31838



NBP3-31838**Human GnRH - Pre-Diluted ELISA Kit (Colorimetric)**

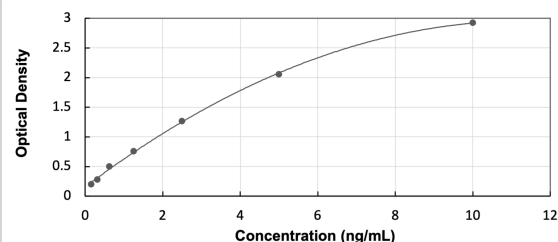
| Product Information | |
|----------------------------|--|
| Unit Size | 1 Kit |
| Concentration | Concentration is not relevant for this product. Please see the protocols for proper use of this product. |
| Storage | Storage of components varies. See protocol for specific instructions. |

| Product Description | |
|-----------------------------|---|
| Description | The Ready-To-Use ELISA kit offers pre-diluted detection reagents and a shorter experimental time. Assay Length: 3 hours |
| Gene ID | 2796 |
| Gene Symbol | GNRH1 |
| Species | Human |
| Kit Components | Pre-coated 96T strip plate, Plate sealer for 96 wells, Standard, Standard Diluent, Detection Solution A, Detection Solution B, TMB Substrate, Stop Solution, Wash Buffer (30 x concentrate), Instruction manual |
| Standard Curve Range | 0.156 - 10 ng/mL (example only; lot dependent) |
| Sensitivity | 0.064 ng/mL (example only; lot dependent) |
| Inter Assay | %CV < 12 (example only; lot dependent) |
| Intra Assay | %CV < 10 (example only; lot dependent) |
| Assay Type | Sandwich ELISA |
| Suitable Sample Type | Serum, plasma, tissue homogenates, cell lysates, cell culture supernatants and other biological fluids |
| Sample Volume | 100 uL |

| Product Application Details | |
|------------------------------------|-------|
| Applications | ELISA |
| Recommended Dilutions | ELISA |

Images

ELISA: Human GnRH - Ready-To-Use ELISA Kit (Colorimetric) [NBP3-31838] - Standard Curve Reference





Novus Biologicals USA

10730 E. Briarwood Avenue
Centennial, CO 80112
USA
Phone: 303.730.1950
Toll Free: 1.888.506.6887
Fax: 303.730.1966
nb-customerservice@bio-techne.com

Bio-Techne Canada

21 Canmotor Ave
Toronto, ON M8Z 4E6
Canada
Phone: 905.827.6400
Toll Free: 855.668.8722
Fax: 905.827.6402
canada.inquires@bio-techne.com

Bio-Techne Ltd

19 Barton Lane
Abingdon Science Park
Abingdon, OX14 3NB, United Kingdom
Phone: (44) (0) 1235 529449
Free Phone: 0800 37 34 15
Fax: (44) (0) 1235 533420
info.EMEA@bio-techne.com

General Contact Information

www.novusbio.com
Technical Support: nb-technical@bio-techne.com
Orders: nb-customerservice@bio-techne.com
General: novus@novusbio.com

Products Related to NBP3-31838

| | |
|------------------|--|
| NBP2-51724-0.1mg | Recombinant Human GnRH His Protein |
| AF1067 | Growth Hormone Antibody [Unconjugated] |
| NBP3-38172-100ul | GnRH Antibody - BSA Free |
| NBP1-46535 | Neuropeptide Y Antibody |

Limitations

This product is for research use only and is not approved for use in humans or in clinical diagnosis. ELISA Kits are guaranteed for 6 months from date of receipt.

For more information on our 100% guarantee, please visit www.novusbio.com/guarantee

Earn gift cards/discounts by submitting a review: www.novusbio.com/reviews/submit/NBP3-31838

Earn gift cards/discounts by submitting a publication using this product:
www.novusbio.com/publications

