

# Product Datasheet

## Enolase 2/Neuron-specific Enolase Antibody (NSE-P2) - BSA Free NBP3-30895-200ug

Unit Size: 200 ug

Store at -20C. Avoid freeze-thaw cycles.

[www.novusbio.com](http://www.novusbio.com)



[technical@novusbio.com](mailto:technical@novusbio.com)

Protocols, Publications, Related Products, Reviews, Research Tools and Images at:  
[www.novusbio.com/NBP3-30895](http://www.novusbio.com/NBP3-30895)

Updated 9/9/2025 v.20.1

Earn rewards for product  
reviews and publications.

Submit a publication at [www.novusbio.com/publications](http://www.novusbio.com/publications)

Submit a review at [www.novusbio.com/reviews/destination/NBP3-30895](http://www.novusbio.com/reviews/destination/NBP3-30895)



**NBP3-30895-200ug**

Enolase 2/Neuron-specific Enolase Antibody (NSE-P2) - BSA Free

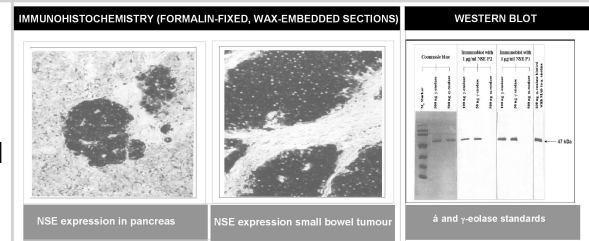
Product Information	
Unit Size	200 ug
Concentration	Please see the vial label for concentration. If unlisted please contact technical services.
Storage	Store at -20C. Avoid freeze-thaw cycles.
Clonality	Monoclonal
Clone	NSE-P2
Preservative	0.08% Sodium Azide
Isotype	IgG1
Purity	Protein A or G purified
Buffer	Phosphate buffered saline

Product Description	
Description	Novus Biologicals Mouse Enolase 2/Neuron-specific Enolase Antibody (NSE-P2) - BSA Free (NBP3-30895) is a monoclonal antibody validated for use in IHC, WB and ELISA. All Novus Biologicals antibodies are covered by our 100% guarantee.
Host	Mouse
Gene ID	2026
Gene Symbol	ENO2
Species	Human, Mouse, Chicken
Immunogen	Hybridoma produced by the fusion of splenocytes from BALB/c mice immunized with a synthetic peptide derived from the human Enolase 2/Neuron-specific Enolase protein and mouse myeloma Ag8563 cells. Sequence common in human, mouse and chicken.

Product Application Details	
Applications	Western Blot, Immunohistochemistry-Paraffin, ELISA
Recommended Dilutions	Western Blot : 1-2 ug/ml, ELISA, Immunohistochemistry-Paraffin : 1-5 ug/ml
Application Notes	.

**Images**

Immunohistochemistry: Enolase 2/Neuron-specific Enolase Antibody (NSE-P2) [NBP3-30895] - Left and Center: Immunohistochemical staining of normal pancreas tissue (left) and small bowel tumor tissue (center) using NSE antibody (X2070M and NBP3-30895). Right: Western blot analysis using NSE antibodies (X2070M and NBP3-30895) on  $\alpha$  and  $\gamma$  enolase standards.





### **Novus Biologicals USA**

10730 E. Briarwood Avenue  
Centennial, CO 80112  
USA  
Phone: 303.730.1950  
Toll Free: 1.888.506.6887  
Fax: 303.730.1966  
nb-customerservice@bio-techne.com

### **Bio-Techne Canada**

21 Canmotor Ave  
Toronto, ON M8Z 4E6  
Canada  
Phone: 905.827.6400  
Toll Free: 855.668.8722  
Fax: 905.827.6402  
canada.inquires@bio-techne.com

### **Bio-Techne Ltd**

19 Barton Lane  
Abingdon Science Park  
Abingdon, OX14 3NB, United Kingdom  
Phone: (44) (0) 1235 529449  
Free Phone: 0800 37 34 15  
Fax: (44) (0) 1235 533420  
info.EMEA@bio-techne.com

### **General Contact Information**

www.novusbio.com  
Technical Support: nb-technical@bio-techne.com  
Orders: nb-customerservice@bio-techne.com  
General: novus@novusbio.com

### **Products Related to NBP3-30895-200ug**

---

NBP2-33376H	Blue Marker Antibody (6F4-F6) [HRP]
HAF007	Goat anti-Mouse IgG Secondary Antibody [HRP]
NB7539	Goat anti-Mouse IgG (H+L) Secondary Antibody [HRP]
NBP1-97005-0.5mg	Mouse IgG1 Isotype Control (MG1)

---

### **Limitations**

This product is for research use only and is not approved for use in humans or in clinical diagnosis. Primary Antibodies are guaranteed for 1 year from date of receipt.

For more information on our 100% guarantee, please visit [www.novusbio.com/guarantee](http://www.novusbio.com/guarantee)

Earn gift cards/discounts by submitting a review: [www.novusbio.com/reviews/submit/NBP3-30895](http://www.novusbio.com/reviews/submit/NBP3-30895)

Earn gift cards/discounts by submitting a publication using this product:  
[www.novusbio.com/publications](http://www.novusbio.com/publications)

