

# Product Datasheet

## LMW-PTP/ACP1 Antibody - BSA Free NBP3-30788-100ug

Unit Size: 100 ug

Store at -20C. Avoid freeze-thaw cycles.

[www.novusbio.com](http://www.novusbio.com)



[technical@novusbio.com](mailto:technical@novusbio.com)

Protocols, Publications, Related Products, Reviews, Research Tools and Images at:  
[www.novusbio.com/NBP3-30788](http://www.novusbio.com/NBP3-30788)

Updated 9/9/2025 v.20.1

Earn rewards for product  
reviews and publications.

Submit a publication at [www.novusbio.com/publications](http://www.novusbio.com/publications)

Submit a review at [www.novusbio.com/reviews/destination/NBP3-30788](http://www.novusbio.com/reviews/destination/NBP3-30788)



**NBP3-30788-100ug**

LMW-PTP/ACP1 Antibody - BSA Free

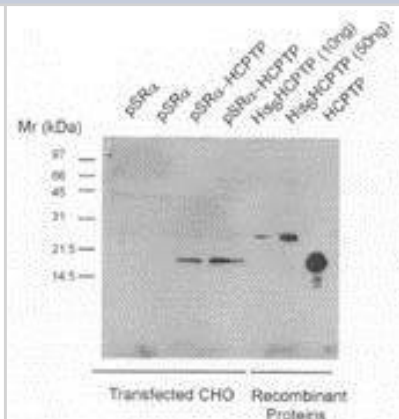
Product Information	
Unit Size	100 ug
Concentration	Please see the vial label for concentration. If unlisted please contact technical services.
Storage	Store at -20C. Avoid freeze-thaw cycles.
Clonality	Polyclonal
Preservative	0.08% Sodium Azide
Isotype	IgG
Purity	Ammonium sulfate precipitation
Buffer	Phosphate buffered saline

Product Description	
Description	Novus Biologicals Sheep LMW-PTP/ACP1 Antibody - BSA Free (NBP3-30788) is a polyclonal antibody validated for use in WB and IP. All Novus Biologicals antibodies are covered by our 100% guarantee.
Host	Sheep
Gene ID	52
Gene Symbol	ACP1
Species	Human, Mouse, Rat, Bovine
Immunogen	The human protein, LMW-PTP/ACP1 (GB Accession #M83653) was subcloned into pRSET to express a His6 N terminal fusion protein. This protein was expressed in E. coli and purified to homogeneity on Ni affinity matrix.

Product Application Details	
Applications	Western Blot, Immunoprecipitation
Recommended Dilutions	Western Blot : 1-10ug/ml, Immunoprecipitation : 1-10ug/ml
Application Notes	.

**Images**

Western Blot: LMW-PTP/ACP1 Antibody [NBP3-30788] - CHO cells were transfected with either Vector (pSRa) or expression vector driving expression of HCPTPA (pSRa-LMWPTP), and harvested in Triton X-100 lysis buffer at 72 h after transfection. 2mg of lysate protein was incubated for 1 h with 10ml of sheep-anti-LMWPTP containing anti-serum, and immuno-precipitated proteins recovered by Protein A/G were separated on PAGE (12%), and HCPTPA detected using a mouse anti-sheep monoclonal antibody.





### **Novus Biologicals USA**

10730 E. Briarwood Avenue  
Centennial, CO 80112  
USA  
Phone: 303.730.1950  
Toll Free: 1.888.506.6887  
Fax: 303.730.1966  
nb-customerservice@bio-techne.com

### **Bio-Techne Canada**

21 Canmotor Ave  
Toronto, ON M8Z 4E6  
Canada  
Phone: 905.827.6400  
Toll Free: 855.668.8722  
Fax: 905.827.6402  
canada.inquires@bio-techne.com

### **Bio-Techne Ltd**

19 Barton Lane  
Abingdon Science Park  
Abingdon, OX14 3NB, United Kingdom  
Phone: (44) (0) 1235 529449  
Free Phone: 0800 37 34 15  
Fax: (44) (0) 1235 533420  
info.EMEA@bio-techne.com

### **General Contact Information**

www.novusbio.com  
Technical Support: nb-technical@bio-techne.com  
Orders: nb-customerservice@bio-techne.com  
General: novus@novusbio.com

### **Products Related to NBP3-30788-100ug**

---

NBP2-33376H	Blue Marker Antibody (6F4-F6) [HRP]
HAF016	Donkey anti-Sheep IgG Secondary Antibody [HRP]
NL010	Donkey anti-Sheep IgG Secondary Antibody [NL557]
NBP1-97055-10mg	Sheep IgG Isotype Control

---

### **Limitations**

This product is for research use only and is not approved for use in humans or in clinical diagnosis. Primary Antibodies are guaranteed for 1 year from date of receipt.

For more information on our 100% guarantee, please visit [www.novusbio.com/guarantee](http://www.novusbio.com/guarantee)

Earn gift cards/discounts by submitting a review: [www.novusbio.com/reviews/submit/NBP3-30788](http://www.novusbio.com/reviews/submit/NBP3-30788)

Earn gift cards/discounts by submitting a publication using this product:  
[www.novusbio.com/publications](http://www.novusbio.com/publications)

