

# Product Datasheet

## MARCKS like protein Antibody - BSA Free NBP3-29649

Unit Size: 100 ug

Store at 4C. Do not freeze.

[www.novusbio.com](http://www.novusbio.com)



[technical@novusbio.com](mailto:technical@novusbio.com)

Protocols, Publications, Related Products, Reviews, Research Tools and Images at:  
[www.novusbio.com/NBP3-29649](http://www.novusbio.com/NBP3-29649)

Updated 9/9/2025 v.20.1

Earn rewards for product  
reviews and publications.

Submit a publication at [www.novusbio.com/publications](http://www.novusbio.com/publications)

Submit a review at [www.novusbio.com/reviews/destination/NBP3-29649](http://www.novusbio.com/reviews/destination/NBP3-29649)



**NBP3-29649**

MARCKS like protein Antibody - BSA Free

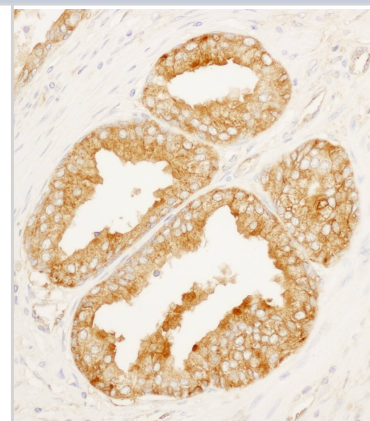
| Product Information |   |
|---------------------|---|
| Unit Size           | 100 ug  |
| Concentration       | Please see the vial label for concentration. If unlisted please contact technical services. |
| Storage             | Store at 4C. Do not freeze.   |
| Clonality           | Polyclonal  |
| Preservative        | 0.09% Sodium Azide  |
| Isotype             | IgG   |
| Purity              | Affinity purified   |
| Buffer              | Tris-citrate/phosphate buffer, pH 7 to 8  |

| Product Description |   |
|---------------------|---|
| Description         | Novus Biologicals Rabbit MARCKS like protein Antibody - BSA Free (NBP3-29649) is a polyclonal antibody validated for use in IHC, WB and IP. All Novus Biologicals antibodies are covered by our 100% guarantee. |
| Host                | Rabbit  |
| Gene ID             | 65108   |
| Gene Symbol         | MARCKSL1  |
| Species             | Human   |
| Immunogen           | between 145 and 195   |
| Assay Type          | [Assay Type]  |
| Sample Volume       | [Sample Volume]   |

| Product Application Details |   |
|-----------------------------|---|
| Applications                | Western Blot, Immunohistochemistry, Immunoprecipitation |
| Recommended Dilutions       | Western Blot, Immunohistochemistry, Immunoprecipitation |

**Images**

Immunohistochemistry;MARCKS like protein Antibody[NBP3-29629]Detection of human MARCKS-like 1 by immunohistochemistry. Sample: FFPE section of human prostate carcinoma. Antibody: Affinity purified rabbit anti-MARCKS-like 1 used at a dilution of 1:1,000 . Detection: DAB





### **Novus Biologicals USA**

10730 E. Briarwood Avenue  
Centennial, CO 80112  
USA  
Phone: 303.730.1950  
Toll Free: 1.888.506.6887  
Fax: 303.730.1966  
nb-customerservice@bio-techne.com

### **Bio-Techne Canada**

21 Canmotor Ave  
Toronto, ON M8Z 4E6  
Canada  
Phone: 905.827.6400  
Toll Free: 855.668.8722  
Fax: 905.827.6402  
canada.inquires@bio-techne.com

### **Bio-Techne Ltd**

19 Barton Lane  
Abingdon Science Park  
Abingdon, OX14 3NB, United Kingdom  
Phone: (44) (0) 1235 529449  
Free Phone: 0800 37 34 15  
Fax: (44) (0) 1235 533420  
info.EMEA@bio-techne.com

### **General Contact Information**

www.novusbio.com  
Technical Support: nb-technical@bio-techne.com  
Orders: nb-customerservice@bio-techne.com  
General: novus@novusbio.com

### **Products Related to NBP3-29649**

---

|             |   |
|-------------|---|
| NBP2-33376H | Blue Marker Antibody (6F4-F6) [HRP]                 |
| HAF008      | Goat anti-Rabbit IgG Secondary Antibody [HRP]       |
| NB7160      | Goat anti-Rabbit IgG (H+L) Secondary Antibody [HRP] |
| NBP2-24891  | Rabbit IgG Isotype Control                          |

---

### **Limitations**

This product is for research use only and is not approved for use in humans or in clinical diagnosis. Primary Antibodies are guaranteed for 1 year from date of receipt.

For more information on our 100% guarantee, please visit [www.novusbio.com/guarantee](http://www.novusbio.com/guarantee)

Earn gift cards/discounts by submitting a review: [www.novusbio.com/reviews/submit/NBP3-29649](http://www.novusbio.com/reviews/submit/NBP3-29649)

Earn gift cards/discounts by submitting a publication using this product:  
[www.novusbio.com/publications](http://www.novusbio.com/publications)

