

# Product Datasheet

## NPM1 Antibody - BSA Free

### NBP3-29484

Unit Size: 100 ug

Store at 4C. Do not freeze.

[www.novusbio.com](http://www.novusbio.com)



[technical@novusbio.com](mailto:technical@novusbio.com)

Protocols, Publications, Related Products, Reviews, Research Tools and Images at:  
[www.novusbio.com/NBP3-29484](http://www.novusbio.com/NBP3-29484)

Updated 9/9/2025 v.20.1

Earn rewards for product  
reviews and publications.

Submit a publication at [www.novusbio.com/publications](http://www.novusbio.com/publications)

Submit a review at [www.novusbio.com/reviews/destination/NBP3-29484](http://www.novusbio.com/reviews/destination/NBP3-29484)



**NBP3-29484**

NPM1 Antibody - BSA Free

Product Information	
Unit Size	100 ug
Concentration	Please see the vial label for concentration. If unlisted please contact technical services.
Storage	Store at 4C. Do not freeze.
Clonality	Polyclonal
Preservative	0.09% Sodium Azide
Isotype	IgG
Purity	Affinity purified
Buffer	Tris-citrate/phosphate buffer, pH 7 to 8

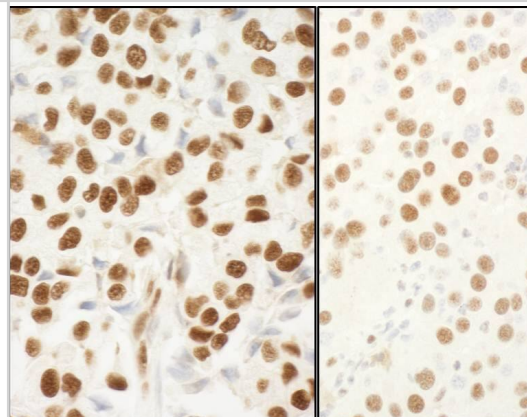
Product Description	
Description	Novus Biologicals Rabbit NPM1 Antibody - BSA Free (NBP3-29484) is a polyclonal antibody validated for use in IHC and IP. All Novus Biologicals antibodies are covered by our 100% guarantee.
Host	Rabbit
Gene ID	4869
Gene Symbol	NPM1
Species	Human, Mouse
Immunogen	between 250 and 294
Assay Type	[Assay Type]
Sample Volume	[Sample Volume]

Product Application Details	
Applications	Immunohistochemistry, Immunoprecipitation
Recommended Dilutions	Immunohistochemistry, Immunoprecipitation

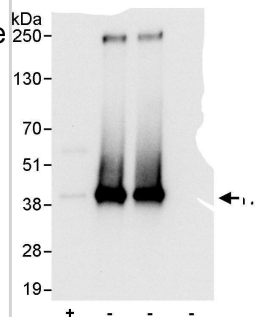


## Images

Immunohistochemistry;NPM1 Antibody[NBP3-29483]Detection of human and mouse NPM1 by immunohistochemistry. Sample: FFPE section of human breast carcinoma and mouse renal cell carcinoma . Antibody: Affinity purified rabbit anti-NPM1 used at a dilution of 1:1,000 . Detection: DAB



Immunoprecipitation:NPM1 Antibody[NBP3-29484] -Detection of human NPM1 by western blot of immunoprecipitates. Samples: Whole cell lysate (1 mg for IP, 20% of IP loaded) from HeLa cells. Antibodies: Affinity purified rabbit anti-NPM1 antibody NBP3-29484 used for IP at 10 µg/mg lysate. NPM1 was also immunoprecipitated by rabbit anti-NPM1 antibodies which recognize upstream epitopes. For blotting immunoprecipitated NPM1, was used at 0.1 µg/ml. Detection: Chemiluminescence with an exposure time of 3 seconds.





### **Novus Biologicals USA**

10730 E. Briarwood Avenue  
Centennial, CO 80112  
USA  
Phone: 303.730.1950  
Toll Free: 1.888.506.6887  
Fax: 303.730.1966  
nb-customerservice@bio-techne.com

### **Bio-Techne Canada**

21 Canmotor Ave  
Toronto, ON M8Z 4E6  
Canada  
Phone: 905.827.6400  
Toll Free: 855.668.8722  
Fax: 905.827.6402  
canada.inquires@bio-techne.com

### **Bio-Techne Ltd**

19 Barton Lane  
Abingdon Science Park  
Abingdon, OX14 3NB, United Kingdom  
Phone: (44) (0) 1235 529449  
Free Phone: 0800 37 34 15  
Fax: (44) (0) 1235 533420  
info.EMEA@bio-techne.com

### **General Contact Information**

www.novusbio.com  
Technical Support: nb-technical@bio-techne.com  
Orders: nb-customerservice@bio-techne.com  
General: novus@novusbio.com

### **Products Related to NBP3-29484**

---

HAF008	Goat anti-Rabbit IgG Secondary Antibody [HRP]
NB7160	Goat anti-Rabbit IgG (H+L) Secondary Antibody [HRP]
NBP2-24891	Rabbit IgG Isotype Control
NB110-61646PEP	NPM1 Antibody Blocking Peptide

---

### **Limitations**

This product is for research use only and is not approved for use in humans or in clinical diagnosis. Primary Antibodies are guaranteed for 1 year from date of receipt.

For more information on our 100% guarantee, please visit [www.novusbio.com/guarantee](http://www.novusbio.com/guarantee)

Earn gift cards/discounts by submitting a review: [www.novusbio.com/reviews/submit/NBP3-29484](http://www.novusbio.com/reviews/submit/NBP3-29484)

Earn gift cards/discounts by submitting a publication using this product:  
[www.novusbio.com/publications](http://www.novusbio.com/publications)

