

# Product Datasheet

## MAML2 Antibody (MMLP2-1)

### NBP3-27933

Unit Size: 100 ug

Store at 4C.

[www.novusbio.com](http://www.novusbio.com)



[technical@novusbio.com](mailto:technical@novusbio.com)

Protocols, Publications, Related Products, Reviews, Research Tools and Images at:  
[www.novusbio.com/NBP3-27933](http://www.novusbio.com/NBP3-27933)

Updated 10/13/2025 v.20.1

Earn rewards for product  
reviews and publications.

Submit a publication at [www.novusbio.com/publications](http://www.novusbio.com/publications)

Submit a review at [www.novusbio.com/reviews/destination/NBP3-27933](http://www.novusbio.com/reviews/destination/NBP3-27933)



**NBP3-27933****MAML2 Antibody (MMLP2-1)**

<b>Product Information</b>	
<b>Unit Size</b>	100 ug
<b>Concentration</b>	0.2 mg/ml
<b>Storage</b>	Store at 4C.
<b>Clonality</b>	Monoclonal
<b>Clone</b>	MMLP2-1
<b>Preservative</b>	0.05% Sodium Azide
<b>Isotype</b>	IgG2a
<b>Purity</b>	Protein G purified
<b>Buffer</b>	PBS, 0.1 mg/ml BSA

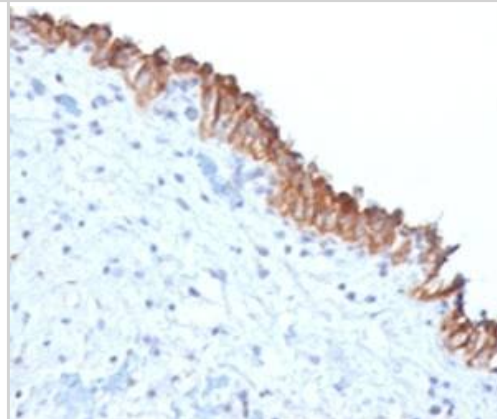
<b>Product Description</b>	
<b>Description</b>	Novus Biologicals Mouse MAML2 Antibody (MMLP2-1) (NBP3-27933) is a monoclonal antibody validated for use in IHC, Flow and ICC/IF. All Novus Biologicals antibodies are covered by our 100% guarantee.
<b>Host</b>	Mouse
<b>Gene ID</b>	84441
<b>Gene Symbol</b>	MAML2
<b>Species</b>	Human
<b>Immunogen</b>	A human recombinant protein was used as the immunogen for this MAML2 antibody.

<b>Product Application Details</b>	
<b>Applications</b>	Immunohistochemistry-Paraffin, Flow Cytometry, Immunocytochemistry/ Immunofluorescence
<b>Recommended Dilutions</b>	Flow Cytometry 0.5 - 1ug/10 <sup>6</sup> cell, Immunocytochemistry/ Immunofluorescence 1 - 2 ug, Immunohistochemistry-Paraffin 0.5 - 1 ug/ml

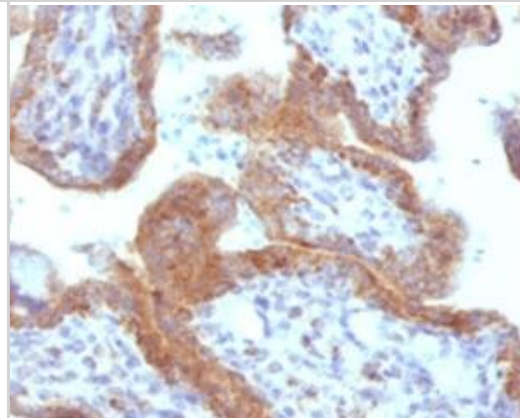


**Images**

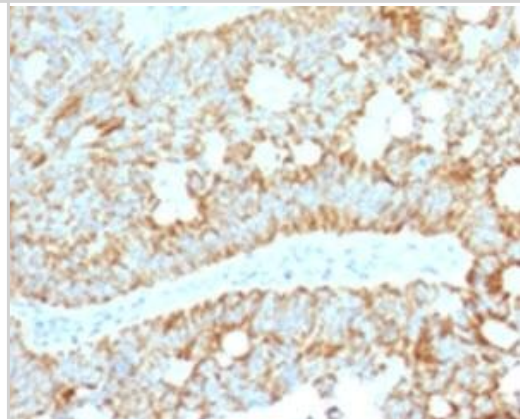
Immunohistochemistry: MAML2 Antibody (MMLP2-1) [NBP3-27933] - IHC testing of FFPE human bladder carcinoma with MAML2 antibody (clone MMLP2-1).



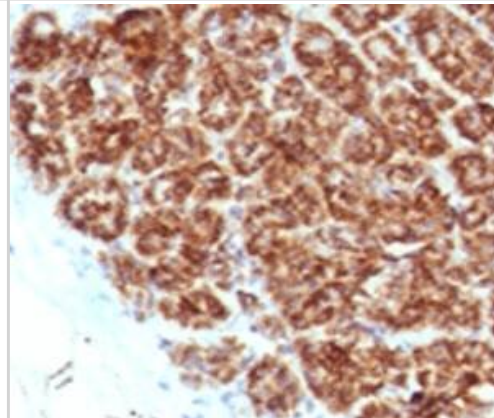
Immunohistochemistry: MAML2 Antibody (MMLP2-1) [NBP3-27933] - IHC testing of FFPE human placenta with MAML2 antibody (clone MMLP2-1).



Immunohistochemistry: MAML2 Antibody (MMLP2-1) [NBP3-27933] - IHC testing of FFPE human colon carcinoma with MAML2 antibody (clone MMLP2-1).



Immunohistochemistry: MAML2 Antibody (MMLP2-1) [NBP3-27933] - IHC testing of FFPE human pancreas with MAML2 antibody (clone MMLP2-1).





### **Novus Biologicals USA**

10730 E. Briarwood Avenue  
Centennial, CO 80112  
USA  
Phone: 303.730.1950  
Toll Free: 1.888.506.6887  
Fax: 303.730.1966  
nb-customerservice@bio-techne.com

### **Bio-Techne Canada**

21 Canmotor Ave  
Toronto, ON M8Z 4E6  
Canada  
Phone: 905.827.6400  
Toll Free: 855.668.8722  
Fax: 905.827.6402  
canada.inquires@bio-techne.com

### **Bio-Techne Ltd**

19 Barton Lane  
Abingdon Science Park  
Abingdon, OX14 3NB, United Kingdom  
Phone: (44) (0) 1235 529449  
Free Phone: 0800 37 34 15  
Fax: (44) (0) 1235 533420  
info.EMEA@bio-techne.com

### **General Contact Information**

www.novusbio.com  
Technical Support: nb-technical@bio-techne.com  
Orders: nb-customerservice@bio-techne.com  
General: novus@novusbio.com

### **Products Related to NBP3-27933**

---

HAF007	Goat anti-Mouse IgG Secondary Antibody [HRP]
NB7539	Goat anti-Mouse IgG (H+L) Secondary Antibody [HRP]
NBP1-96778	Mouse IgG2a Isotype Control (M2A)
NBP1-82891PEP	MAML2 Recombinant Protein Antigen

---

### **Limitations**

This product is for research use only and is not approved for use in humans or in clinical diagnosis. Primary Antibodies are guaranteed for 1 year from date of receipt.

For more information on our 100% guarantee, please visit [www.novusbio.com/guarantee](http://www.novusbio.com/guarantee)

Earn gift cards/discounts by submitting a review: [www.novusbio.com/reviews/submit/NBP3-27933](http://www.novusbio.com/reviews/submit/NBP3-27933)

Earn gift cards/discounts by submitting a publication using this product:  
[www.novusbio.com/publications](http://www.novusbio.com/publications)

