

# Product Datasheet

## TET2 Antibody - BSA Free NBP3-27879

Unit Size: 0.1 mg

Store at 4C short term. Aliquot and store at -20C long term. Avoid freeze-thaw cycles.

[www.novusbio.com](http://www.novusbio.com)



[technical@novusbio.com](mailto:technical@novusbio.com)

Protocols, Publications, Related Products, Reviews, Research Tools and Images at:  
[www.novusbio.com/NBP3-27879](http://www.novusbio.com/NBP3-27879)

Updated 9/9/2025 v.20.1

Earn rewards for product  
reviews and publications.

Submit a publication at [www.novusbio.com/publications](http://www.novusbio.com/publications)

Submit a review at [www.novusbio.com/reviews/destination/NBP3-27879](http://www.novusbio.com/reviews/destination/NBP3-27879)



**NBP3-27879**

TET2 Antibody - BSA Free

Product Information	
Unit Size	0.1 mg
Concentration	1 mg/ml
Storage	Store at 4C short term. Aliquot and store at -20C long term. Avoid freeze-thaw cycles.
Clonality	Polyclonal
Preservative	0.02% Sodium Azide
Purity	Peptide affinity purified
Buffer	PBS

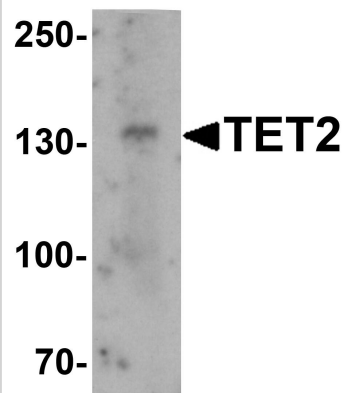
Product Description	
Description	Novus Biologicals Rabbit TET2 Antibody - BSA Free (NBP3-27879) is a polyclonal antibody validated for use in IHC, WB, ELISA and ICC/IF. All Novus Biologicals antibodies are covered by our 100% guarantee.
Host	Rabbit
Gene ID	54790
Gene Symbol	TET2
Species	Human
Specificity/Sensitivity	At least two isoforms of TET2 are known to exist; this antibody will detect both isoforms.
Immunogen	TET2 antibody was raised against an 18 amino acid synthetic peptide near the amino terminus of human TET2. The immunogen is located within amino acids 20 - 70 of TET2.

Product Application Details	
Applications	Western Blot, Immunohistochemistry-Paraffin, ELISA, Immunocytochemistry/Immunofluorescence
Recommended Dilutions	Western Blot 1 ug/mL, ELISA, Immunocytochemistry/ Immunofluorescence, Immunohistochemistry-Paraffin 2 ug/mL



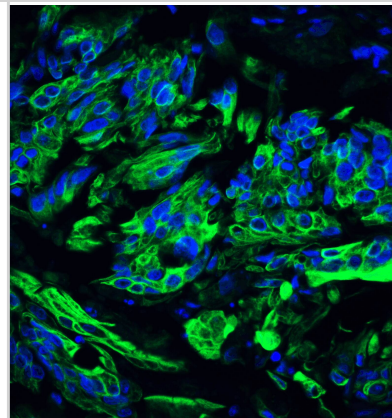
**Images**

Western Blot: TET2 Antibody [NBP3-27879] - Western blot analysis of TET2 in SK-N-SH cell lysate with TET2 antibody at 1 u/mL.

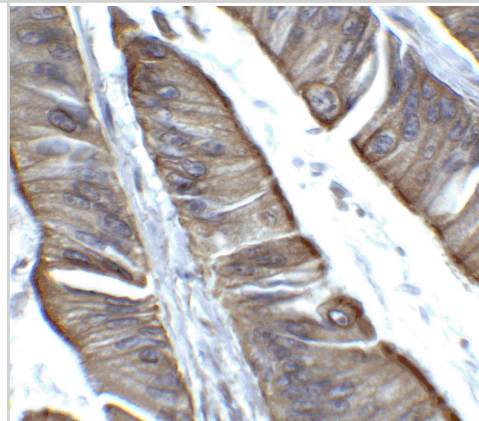


Immunocytochemistry/ Immunofluorescence: TET2 Antibody [NBP3-27879] - Immunofluorescence of TET2 in human colon carcinoma tissue with TET2 antibody at 20 u/ml.

Green: TET2 Antibody  
Blue: DAPI staining



Immunohistochemistry: TET2 Antibody [NBP3-27879] - Immunohistochemistry of TET2 in human colon carcinoma tissue with TET2 antibody at 2 u/ml.





### **Novus Biologicals USA**

10730 E. Briarwood Avenue  
Centennial, CO 80112  
USA  
Phone: 303.730.1950  
Toll Free: 1.888.506.6887  
Fax: 303.730.1966  
nb-customerservice@bio-techne.com

### **Bio-Techne Canada**

21 Canmotor Ave  
Toronto, ON M8Z 4E6  
Canada  
Phone: 905.827.6400  
Toll Free: 855.668.8722  
Fax: 905.827.6402  
canada.inquires@bio-techne.com

### **Bio-Techne Ltd**

19 Barton Lane  
Abingdon Science Park  
Abingdon, OX14 3NB, United Kingdom  
Phone: (44) (0) 1235 529449  
Free Phone: 0800 37 34 15  
Fax: (44) (0) 1235 533420  
info.EMEA@bio-techne.com

### **General Contact Information**

www.novusbio.com  
Technical Support: nb-technical@bio-techne.com  
Orders: nb-customerservice@bio-techne.com  
General: novus@novusbio.com

### **Products Related to NBP3-27879**

---

NBP2-33376H	Blue Marker Antibody (6F4-F6) [HRP]
HAF008	Goat anti-Rabbit IgG Secondary Antibody [HRP]
NB7160	Goat anti-Rabbit IgG (H+L) Secondary Antibody [HRP]
NBP2-27465PEP	TET2 Antibody Blocking Peptide

---

### **Limitations**

This product is for research use only and is not approved for use in humans or in clinical diagnosis. Primary Antibodies are guaranteed for 1 year from date of receipt.

For more information on our 100% guarantee, please visit [www.novusbio.com/guarantee](http://www.novusbio.com/guarantee)

Earn gift cards/discounts by submitting a review: [www.novusbio.com/reviews/submit/NBP3-27879](http://www.novusbio.com/reviews/submit/NBP3-27879)

Earn gift cards/discounts by submitting a publication using this product:  
[www.novusbio.com/publications](http://www.novusbio.com/publications)

