

# Product Datasheet

## Pax6 Antibody (22C3) - BSA Free NBP3-26437-100ul

Unit Size: 100 ul

Store at -20 to -70C. Avoid freeze-thaw cycles.

[www.novusbio.com](http://www.novusbio.com)



[technical@novusbio.com](mailto:technical@novusbio.com)

Protocols, Publications, Related Products, Reviews, Research Tools and Images at:  
[www.novusbio.com/NBP3-26437](http://www.novusbio.com/NBP3-26437)

Updated 2/24/2026 v.20.1

Earn rewards for product  
reviews and publications.

Submit a publication at [www.novusbio.com/publications](http://www.novusbio.com/publications)

Submit a review at [www.novusbio.com/reviews/destination/NBP3-26437](http://www.novusbio.com/reviews/destination/NBP3-26437)



**NBP3-26437-100ul**

Pax6 Antibody (22C3) - BSA Free

| Product Information  |   |
|----------------------|---|
| <b>Unit Size</b>     | 100 ul  |
| <b>Concentration</b> | Please see the vial label for concentration. If unlisted please contact technical services. |
| <b>Storage</b>       | Store at -20 to -70C. Avoid freeze-thaw cycles.   |
| <b>Clonality</b>     | Monoclonal  |
| <b>Clone</b>         | 22C3  |
| <b>Preservative</b>  | 0.02% Sodium Azide  |
| <b>Isotype</b>       | IgG   |
| <b>Purity</b>        | Affinity purified   |
| <b>Buffer</b>        | PBS, pH 7.4, 150mM NaCl, and 50% glycerol   |

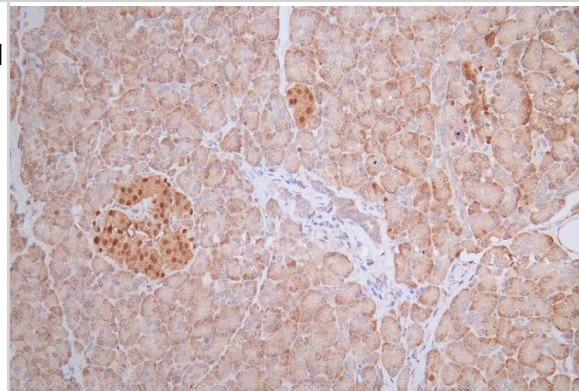
| Product Description |  |
|---------------------|--|
| <b>Description</b>  | Novus Biologicals Rabbit Pax6 Antibody (22C3) - BSA Free (NBP3-26437) is a recombinant monoclonal antibody validated for use in IHC, ELISA and Flow. All Novus Biologicals antibodies are covered by our 100% guarantee. |
| <b>Host</b>         | Rabbit   |
| <b>Gene ID</b>      | 5080   |
| <b>Gene Symbol</b>  | PAX6   |
| <b>Species</b>      | Human  |
| <b>Immunogen</b>    | A synthesized peptide derived from Human Pax6 [UniProt P26367]   |

| Product Application Details  |   |
|------------------------------|---|
| <b>Applications</b>          | ELISA, Flow Cytometry, Immunohistochemistry                       |
| <b>Recommended Dilutions</b> | Flow Cytometry 1:50-1:200, ELISA, Immunohistochemistry 1:50-1:200 |

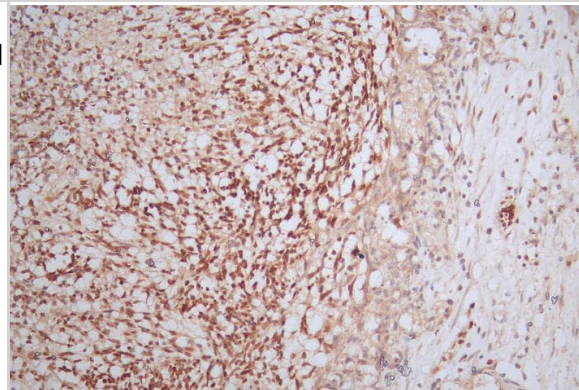


## Images

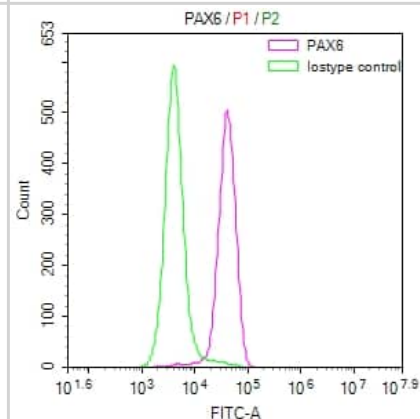
Immunohistochemistry: Pax6 Antibody (22C3) [NBP3-26437] - Image of Pax6 Antibody (22C3) diluted at 1:100 and staining in paraffin-embedded human pancreati tissue performed. After dewaxing and hydration, antigen retrieval was mediated by high pressure in a citrate buffer (pH 6.0). Section was blocked with 10% normal goat serum 30min at RT. Then primary antibody (1% BSA) was incubated at 4C overnight. The primary is detected by a Goat anti-rabbit polymer IgG labeled by HRP and visualized using 0.55% DAB.



Immunohistochemistry: Pax6 Antibody (22C3) [NBP3-26437] - Image of Pax6 Antibody (22C3) diluted at 1:100 and staining in paraffin-embedded human pancreati tissue performed. After dewaxing and hydration, antigen retrieval was mediated by high pressure in a citrate buffer (pH 6.0). Section was blocked with 10% normal goat serum 30min at RT. Then primary antibody (1% BSA) was incubated at 4°C overnight. The primary is detected by a Goat anti-rabbit polymer IgG labeled by HRP and visualized using 0.55% DAB.



Flow Cytometry: Pax6 Antibody (22C3) [NBP3-26437] - Overlay Peak curve showing SH-SY5Y cells stained with Pax6 Antibody (22C3) (red line) at 1:50. The cells were fixed in 4% formaldehyde and permeated by 0.2% Triton X-100. Then 10% normal goat serum to block non-specific protein-protein interactions followed by the antibody (1ug/1\*10^6 cells) for 45min at 4C. The secondary antibody used was FITC-conjugated Goat Anti-rabbit IgG (H+L) at 1:200 dilution for 35min at 4C. Control antibody (green line) was rabbit IgG (1ug/1\*10^6 cells) used under the same conditions. Acquisition of >10,000 events was performed.





### **Novus Biologicals USA**

10730 E. Briarwood Avenue  
Centennial, CO 80112  
USA  
Phone: 303.730.1950  
Toll Free: 1.888.506.6887  
Fax: 303.730.1966  
nb-customerservice@bio-techne.com

### **Bio-Techne Canada**

21 Canmotor Ave  
Toronto, ON M8Z 4E6  
Canada  
Phone: 905.827.6400  
Toll Free: 855.668.8722  
Fax: 905.827.6402  
canada.inquires@bio-techne.com

### **Bio-Techne Ltd**

19 Barton Lane  
Abingdon Science Park  
Abingdon, OX14 3NB, United Kingdom  
Phone: (44) (0) 1235 529449  
Free Phone: 0800 37 34 15  
Fax: (44) (0) 1235 533420  
info.EMEA@bio-techne.com

### **General Contact Information**

www.novusbio.com  
Technical Support: nb-technical@bio-techne.com  
Orders: nb-customerservice@bio-techne.com  
General: novus@novusbio.com

### **Products Related to NBP3-26437-100ul**

---

|                    |   |
|--------------------|---|
| HAF008             | Goat anti-Rabbit IgG Secondary Antibody [HRP]       |
| NB7160             | Goat anti-Rabbit IgG (H+L) Secondary Antibody [HRP] |
| NBP2-24891         | Rabbit IgG Isotype Control                          |
| H00005080-P01-10ug | Recombinant Human Pax6 GST (N-Term) Protein         |

---

### **Limitations**

This product is for research use only and is not approved for use in humans or in clinical diagnosis. Primary Antibodies are guaranteed for 1 year from date of receipt.

For more information on our 100% guarantee, please visit [www.novusbio.com/guarantee](http://www.novusbio.com/guarantee)

Earn gift cards/discounts by submitting a review: [www.novusbio.com/reviews/submit/NBP3-26437](http://www.novusbio.com/reviews/submit/NBP3-26437)

Earn gift cards/discounts by submitting a publication using this product:  
[www.novusbio.com/publications](http://www.novusbio.com/publications)

