

# Product Datasheet

## Prolactin R Antibody (1D3) - BSA Free NBP3-26368-100ul

Unit Size: 100 ul

Store at -20 to -70C. Avoid freeze-thaw cycles.

[www.novusbio.com](http://www.novusbio.com)



[technical@novusbio.com](mailto:technical@novusbio.com)

Protocols, Publications, Related Products, Reviews, Research Tools and Images at:  
[www.novusbio.com/NBP3-26368](http://www.novusbio.com/NBP3-26368)

Updated 2/24/2026 v.20.1

Earn rewards for product  
reviews and publications.

Submit a publication at [www.novusbio.com/publications](http://www.novusbio.com/publications)

Submit a review at [www.novusbio.com/reviews/destination/NBP3-26368](http://www.novusbio.com/reviews/destination/NBP3-26368)



**NBP3-26368-100ul**

Prolactin R Antibody (1D3) - BSA Free

<b>Product Information</b>	
<b>Unit Size</b>	100 ul
<b>Concentration</b>	Please see the vial label for concentration. If unlisted please contact technical services.
<b>Storage</b>	Store at -20 to -70C. Avoid freeze-thaw cycles.
<b>Clonality</b>	Monoclonal
<b>Clone</b>	1D3
<b>Preservative</b>	0.03% Proclin 300
<b>Isotype</b>	IgG2
<b>Purity</b>	Affinity purified
<b>Buffer</b>	50% Glycerol, 0.01M PBS, PH 7.4

<b>Product Description</b>	
<b>Description</b>	Novus Biologicals Human Prolactin R Antibody (1D3) - BSA Free (NBP3-26368) is a recombinant monoclonal antibody validated for use in ELISA. All Novus Biologicals antibodies are covered by our 100% guarantee.
<b>Host</b>	Human
<b>Gene ID</b>	5618
<b>Gene Symbol</b>	PRLR
<b>Species</b>	Human, Mouse
<b>Immunogen</b>	Recombinant Human Prolactin R protein [UniProt P16471]

<b>Product Application Details</b>	
<b>Applications</b>	ELISA
<b>Recommended Dilutions</b>	ELISA

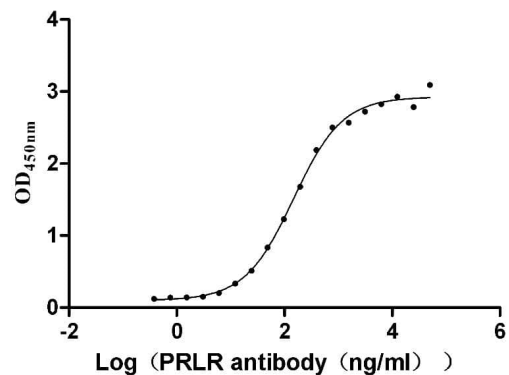


## Images

ELISA: Prolactin R Antibody (1D3) [NBP3-26368] - The Binding Activity of Human Prolactin R with Prolactin R Antibody.

Activity: Measured by its binding ability in a functional ELISA.

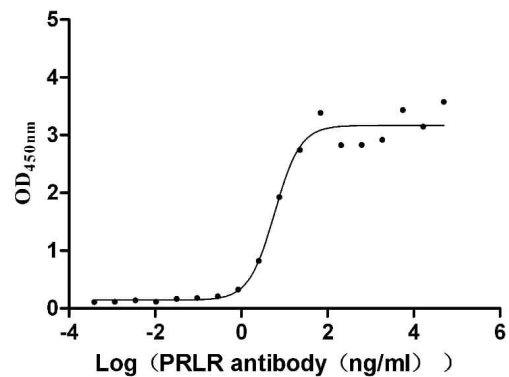
Immobilized Human Prolactin R at 2 ug/mL can bind Prolactin R Antibody, the EC50 is 126.8-171.9 ng/mL.



ELISA: Prolactin R Antibody (1D3) [NBP3-26368] - The Binding Activity of Mouse Prolactin R with Prolactin R Antibody.

Activity: Measured by its binding ability in a functional ELISA.

Immobilized Mouse Prolactin R at 5 ug/mL can bind Prolactin R Antibody, the EC50 is 4.021-8.706 ng/mL.





### **Novus Biologicals USA**

10730 E. Briarwood Avenue  
Centennial, CO 80112  
USA  
Phone: 303.730.1950  
Toll Free: 1.888.506.6887  
Fax: 303.730.1966  
nb-customerservice@bio-techne.com

### **Bio-Techne Canada**

21 Canmotor Ave  
Toronto, ON M8Z 4E6  
Canada  
Phone: 905.827.6400  
Toll Free: 855.668.8722  
Fax: 905.827.6402  
canada.inquires@bio-techne.com

### **Bio-Techne Ltd**

19 Barton Lane  
Abingdon Science Park  
Abingdon, OX14 3NB, United Kingdom  
Phone: (44) (0) 1235 529449  
Free Phone: 0800 37 34 15  
Fax: (44) (0) 1235 533420  
info.EMEA@bio-techne.com

### **General Contact Information**

www.novusbio.com  
Technical Support: nb-technical@bio-techne.com  
Orders: nb-customerservice@bio-techne.com  
General: novus@novusbio.com

### **Products Related to NBP3-26368-100ul**

---

G-102-C	Goat anti-Human IgG Secondary Antibody [Unconjugated]
NB7446	Goat anti-Human IgG Fc Secondary Antibody
DDXCH02P-100	Human IgG2 Isotype Control
291-G1-200	IGF-I/IGF-1 [Unconjugated]

---

### **Limitations**

This product is for research use only and is not approved for use in humans or in clinical diagnosis. Primary Antibodies are guaranteed for 1 year from date of receipt.

For more information on our 100% guarantee, please visit [www.novusbio.com/guarantee](http://www.novusbio.com/guarantee)

Earn gift cards/discounts by submitting a review: [www.novusbio.com/reviews/submit/NBP3-26368](http://www.novusbio.com/reviews/submit/NBP3-26368)

Earn gift cards/discounts by submitting a publication using this product:  
[www.novusbio.com/publications](http://www.novusbio.com/publications)

