

# Product Datasheet

## IgD Antibody (RM123) - Azide and BSA Free NBP3-25972

Unit Size: 100 ug

Store at -20C. Avoid freeze-thaw cycles.

[www.novusbio.com](http://www.novusbio.com)



[technical@novusbio.com](mailto:technical@novusbio.com)

Protocols, Publications, Related Products, Reviews, Research Tools and Images at:  
[www.novusbio.com/NBP3-25972](http://www.novusbio.com/NBP3-25972)

Updated 9/9/2025 v.20.1

Earn rewards for product  
reviews and publications.

Submit a publication at [www.novusbio.com/publications](http://www.novusbio.com/publications)

Submit a review at [www.novusbio.com/reviews/destination/NBP3-25972](http://www.novusbio.com/reviews/destination/NBP3-25972)



**NBP3-25972**

IgD Antibody (RM123) - Azide and BSA Free

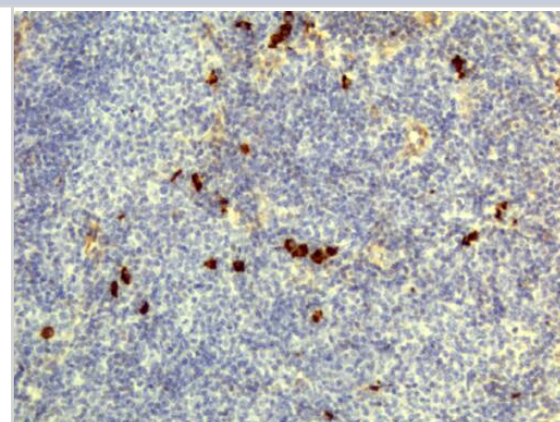
Product Information	
Unit Size	100 ug
Concentration	1 mg/ml
Storage	Store at -20C. Avoid freeze-thaw cycles.
Clonality	Monoclonal
Clone	RM123
Preservative	No Preservative
Isotype	IgG
Purity	Protein A purified
Buffer	PBS

Product Description	
Description	Novus Biologicals Rabbit IgD Antibody (RM123) - Azide and BSA Free (NBP2-62026) is a recombinant monoclonal antibody validated for use in IHC and ELISA. All Novus Biologicals antibodies are covered by our 100% guarantee.
Host	Rabbit
Gene ID	3495
Gene Symbol	IGHD
Species	Human
Specificity/Sensitivity	This antibody reacts to human IgD. No cross reactivity with human IgG, IgM, IgA, or IgE.
Immunogen	Human IgD

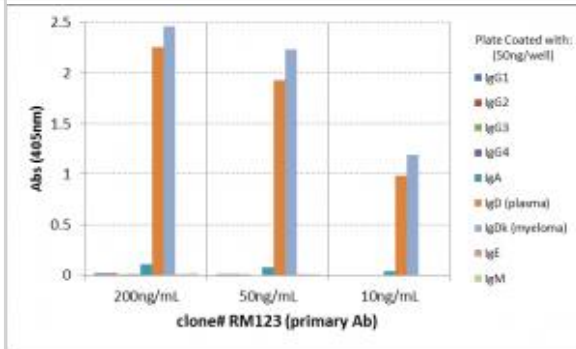
Product Application Details	
Applications	ELISA, Immunohistochemistry, Sandwich ELISA Capture, Sandwich ELISA Detection
Recommended Dilutions	ELISA, Immunohistochemistry, Sandwich ELISA Capture 50 - 200ng/well, Sandwich ELISA Detection 0.01 - 0.1 ug/ml

**Images**

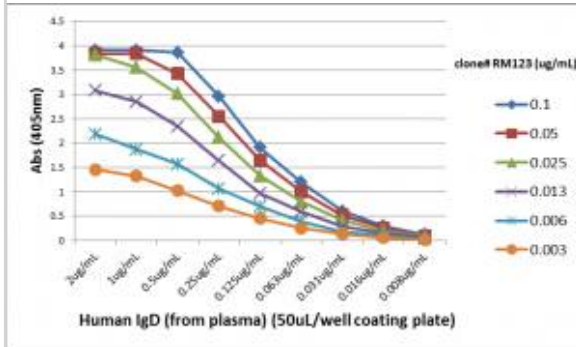
Immunohistochemistry-Paraffin: IgD Antibody (RM123) - Azide and BSA Free [NBP3-25972] - Immunohistochemistry of Human Lymphoid Tissue using Clone RM123.



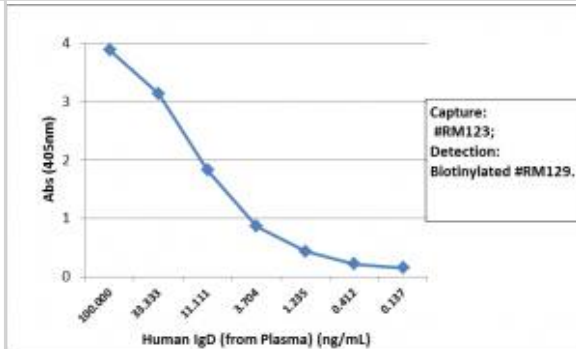
ELISA: IgD Antibody (RM123) - Azide and BSA Free [NBP3-25972] - ELISA of human immunoglobulins shows RM123 reacts to IgD from human plasma and IgD kappa from human myeloma. No cross reactivity with human IgG, IgM, IgA, or IgE. The plate was coated with 50 ng/well of different immunoglobulins. 200 ng/mL, 50ng/mL, or 10 ng/mL of RM123 was used as the primary antibody. An alkaline phosphatase conjugated anti-rabbit IgG as the secondary antibody.



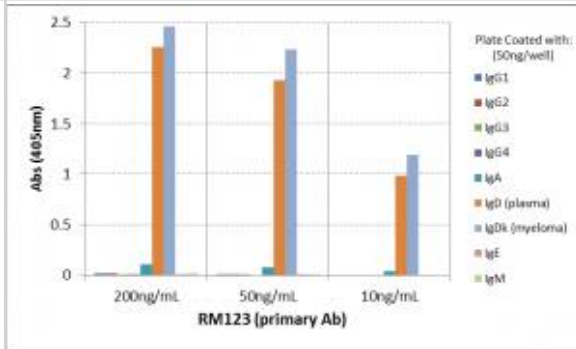
ELISA: IgD Antibody (RM123) - Azide and BSA Free [NBP3-25972] - A titer ELISA using RM123. The plate was coated with different amounts of human IgD (from plasma). A serial dilution of RM123 was used as the primary antibody. An alkaline phosphatase conjugated anti-rabbit IgG as the secondary antibody.



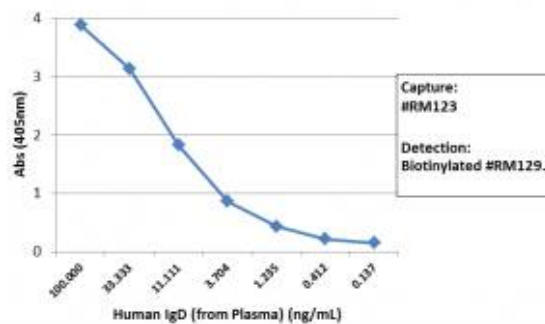
Sandwich ELISA: IgD Antibody (RM123) - Azide and BSA Free [NBP3-25972] - Sandwich ELISA using RM123 as the capture antibody (100ng/well), and NBP3-18532 as the detection antibody, followed by an alkaline phosphatase conjugated streptavidin.



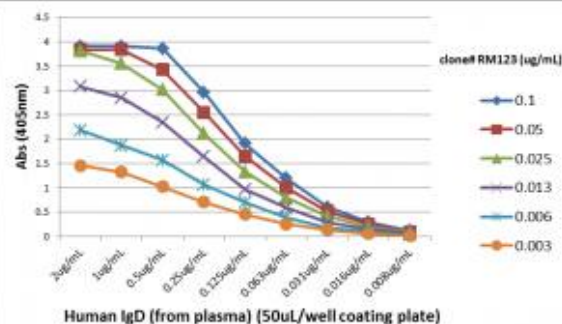
ELISA: IgD Antibody (RM123) - Azide and BSA Free [NBP3-25972] - ELISA of human immunoglobulins shows RM123 reacts to IgD from human plasma and IgD kappa from human myeloma. No cross reactivity with human IgG, IgM, IgA, or IgE. The plate was coated with 50 ng/well of different immunoglobulins. 200 ng/mL, 50ng/mL, or 10 ng/mL of RM123 was used as the primary antibody. An alkaline phosphatase conjugated anti-rabbit IgG as the secondary antibody.



Sandwich ELISA: IgD Antibody (RM123) - Azide and BSA Free [NBP3-25972] - Sandwich ELISA using RM123 as the capture antibody (100ng/well), and NBP3-18532 as the detection antibody, followed by an alkaline phosphatase conjugated streptavidin.



ELISA: IgD Antibody (RM123) - Azide and BSA Free [NBP3-25972] - A titer ELISA using RM123. The plate was coated with different amounts of human IgD (from plasma). A serial dilution of RM123 was used as the primary antibody. An alkaline phosphatase conjugated anti-rabbit IgG as the secondary antibody.





### **Novus Biologicals USA**

10730 E. Briarwood Avenue  
Centennial, CO 80112  
USA  
Phone: 303.730.1950  
Toll Free: 1.888.506.6887  
Fax: 303.730.1966  
nb-customerservice@bio-techne.com

### **Bio-Techne Canada**

21 Canmotor Ave  
Toronto, ON M8Z 4E6  
Canada  
Phone: 905.827.6400  
Toll Free: 855.668.8722  
Fax: 905.827.6402  
canada.inquires@bio-techne.com

### **Bio-Techne Ltd**

19 Barton Lane  
Abingdon Science Park  
Abingdon, OX14 3NB, United Kingdom  
Phone: (44) (0) 1235 529449  
Free Phone: 0800 37 34 15  
Fax: (44) (0) 1235 533420  
info.EMEA@bio-techne.com

### **General Contact Information**

www.novusbio.com  
Technical Support: nb-technical@bio-techne.com  
Orders: nb-customerservice@bio-techne.com  
General: novus@novusbio.com

### **Products Related to NBP3-25972**

---

HAF008	Goat anti-Rabbit IgG Secondary Antibody [HRP]
NB7160	Goat anti-Rabbit IgG (H+L) Secondary Antibody [HRP]
NBP2-24891	Rabbit IgG Isotype Control
291-G1-200	IGF-I/IGF-1 [Unconjugated]

---

### **Limitations**

This product is for research use only and is not approved for use in humans or in clinical diagnosis. Primary Antibodies are guaranteed for 1 year from date of receipt.

For more information on our 100% guarantee, please visit [www.novusbio.com/guarantee](http://www.novusbio.com/guarantee)

Earn gift cards/discounts by submitting a review: [www.novusbio.com/reviews/submit/NBP3-25972](http://www.novusbio.com/reviews/submit/NBP3-25972)

Earn gift cards/discounts by submitting a publication using this product:  
[www.novusbio.com/publications](http://www.novusbio.com/publications)

