

# Product Datasheet

## Lambda Light Chain Antibody (RM127) - Azide and BSA Free NBP3-25966

Unit Size: 100 ug

Store at -20C. Avoid freeze-thaw cycles.

[www.novusbio.com](http://www.novusbio.com)



[technical@novusbio.com](mailto:technical@novusbio.com)

Protocols, Publications, Related Products, Reviews, Research Tools and Images at:  
[www.novusbio.com/NBP3-25966](http://www.novusbio.com/NBP3-25966)

Updated 9/9/2025 v.20.1

Earn rewards for product reviews and publications.

Submit a publication at [www.novusbio.com/publications](http://www.novusbio.com/publications)

Submit a review at [www.novusbio.com/reviews/destination/NBP3-25966](http://www.novusbio.com/reviews/destination/NBP3-25966)



**NBP3-25966**

Lambda Light Chain Antibody (RM127) - Azide and BSA Free

Product Information	
Unit Size	100 ug
Concentration	1 mg/ml
Storage	Store at -20C. Avoid freeze-thaw cycles.
Clonality	Monoclonal
Clone	RM127
Preservative	No Preservative
Isotype	IgG
Purity	Protein A purified
Buffer	PBS

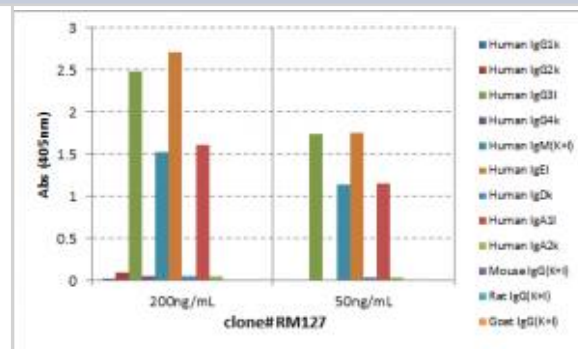
Product Description	
Description	Novus Biologicals Rabbit Lambda Light Chain Antibody (RM127) - Azide and BSA Free (NBP2-62021) is a recombinant monoclonal antibody validated for use in IHC, ELISA, Flow and ICC/IF. All Novus Biologicals antibodies are covered by our 100% guarantee.
Host	Rabbit
Gene ID	3537
Gene Symbol	IGLC1
Species	Human
Specificity/Sensitivity	This antibody reacts to the lambda light chain of human immunoglobulins, and does not react to the kappa light chain. This antibody does not react to monkey (Cyno or Rhesus) IgG, mouse IgG, rat IgG, or goat IgG.
Immunogen	Human IgG

Product Application Details	
Applications	ELISA, Flow Cytometry, Immunocytochemistry/ Immunofluorescence, Immunohistochemistry
Recommended Dilutions	Flow Cytometry 0.2ug/ml-2ug/ml, ELISA 0.05ug/ml - 0.2ug/ml, Immunohistochemistry 0.5ug/ml - 2ug/ml, Immunocytochemistry/ Immunofluorescence 0.5ug/ml - 2ug/ml

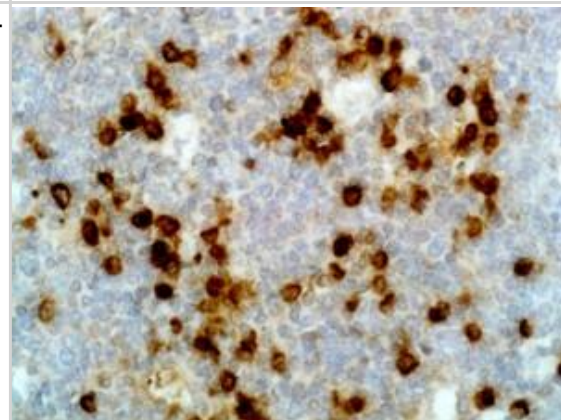


## Images

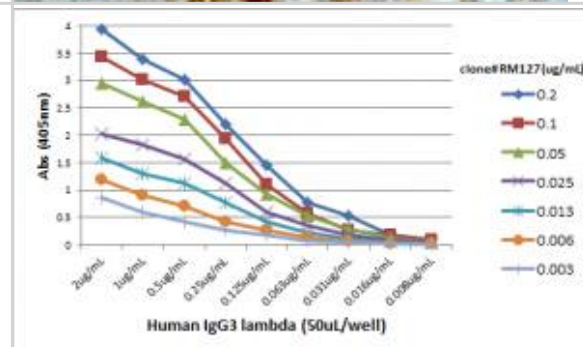
ELISA: Lambda Light Chain Antibody (RM127) - Azide and BSA Free [NBP3-25966] - ELISA of human immunoglobulins shows RM127 reacts to the lambda light chain of human immunoglobulins. No cross reactivity with the kappa light chain, mouse IgG, rat IgG, or goat IgG. The plate was coated with 50 ng/well of different immunoglobulins. 200 ng/mL or 50 ng/mL of RM127 was used as the primary antibody. An alkaline phosphatase conjugated anti-rabbit IgG as the secondary antibody.



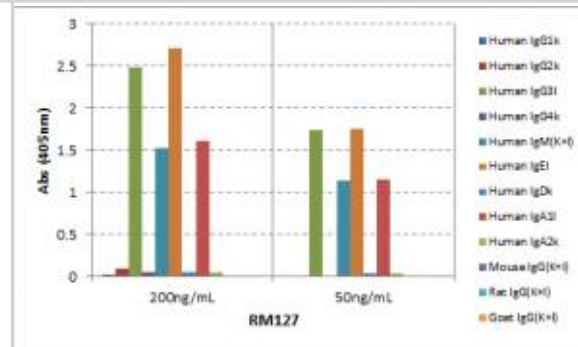
Immunohistochemistry-Paraffin: Lambda Light Chain Antibody (RM127) - Azide and BSA Free [NBP3-25966] - Immunohistochemistry of Human Tonsil using Clone RM127.



ELISA: Lambda Light Chain Antibody (RM127) - Azide and BSA Free [NBP3-25966] - A titer ELISA using RM127. The plate was coated with different amounts of human IgG3l. A serial dilution of RM127 was used as the primary antibody. An alkaline phosphatase conjugated anti-rabbit IgG as the secondary antibody.



ELISA: Lambda Light Chain Antibody (RM127) - Azide and BSA Free [NBP3-25966] - ELISA of human immunoglobulins shows RM127 reacts to the lambda light chain of human immunoglobulins. No cross reactivity with the kappa light chain, mouse IgG, rat IgG, or goat IgG. The plate was coated with 50 ng/well of different immunoglobulins. 200 ng/mL or 50 ng/mL of RM127 was used as the primary antibody. An alkaline phosphatase conjugated anti-rabbit IgG as the secondary antibody.





### **Novus Biologicals USA**

10730 E. Briarwood Avenue  
Centennial, CO 80112  
USA  
Phone: 303.730.1950  
Toll Free: 1.888.506.6887  
Fax: 303.730.1966  
nb-customerservice@bio-techne.com

### **Bio-Techne Canada**

21 Canmotor Ave  
Toronto, ON M8Z 4E6  
Canada  
Phone: 905.827.6400  
Toll Free: 855.668.8722  
Fax: 905.827.6402  
canada.inquires@bio-techne.com

### **Bio-Techne Ltd**

19 Barton Lane  
Abingdon Science Park  
Abingdon, OX14 3NB, United Kingdom  
Phone: (44) (0) 1235 529449  
Free Phone: 0800 37 34 15  
Fax: (44) (0) 1235 533420  
info.EMEA@bio-techne.com

### **General Contact Information**

www.novusbio.com  
Technical Support: nb-technical@bio-techne.com  
Orders: nb-customerservice@bio-techne.com  
General: novus@novusbio.com

### **Products Related to NBP3-25966**

---

HAF008	Goat anti-Rabbit IgG Secondary Antibody [HRP]
NB7160	Goat anti-Rabbit IgG (H+L) Secondary Antibody [HRP]
NBP2-24891	Rabbit IgG Isotype Control
NB7552	Goat anti-Mouse Lambda Light Chain Secondary Antibody [HRP]

---

### **Limitations**

This product is for research use only and is not approved for use in humans or in clinical diagnosis. Primary Antibodies are guaranteed for 1 year from date of receipt.

For more information on our 100% guarantee, please visit [www.novusbio.com/guarantee](http://www.novusbio.com/guarantee)

Earn gift cards/discounts by submitting a review: [www.novusbio.com/reviews/submit/NBP3-25966](http://www.novusbio.com/reviews/submit/NBP3-25966)

Earn gift cards/discounts by submitting a publication using this product:  
[www.novusbio.com/publications](http://www.novusbio.com/publications)

