

# Product Datasheet

## IgG2b Antibody (RM108) - Azide and BSA Free NBP3-25953

Unit Size: 100 ug

Store at -20C. Avoid freeze-thaw cycles.

[www.novusbio.com](http://www.novusbio.com)



[technical@novusbio.com](mailto:technical@novusbio.com)

Protocols, Publications, Related Products, Reviews, Research Tools and Images at:  
[www.novusbio.com/NBP3-25953](http://www.novusbio.com/NBP3-25953)

Updated 9/9/2025 v.20.1

Earn rewards for product  
reviews and publications.

Submit a publication at [www.novusbio.com/publications](http://www.novusbio.com/publications)

Submit a review at [www.novusbio.com/reviews/destination/NBP3-25953](http://www.novusbio.com/reviews/destination/NBP3-25953)



**NBP3-25953**

IgG2b Antibody (RM108) - Azide and BSA Free

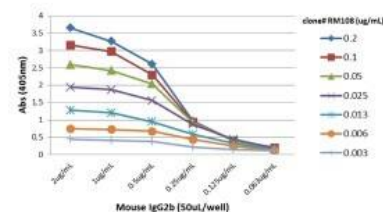
| Product Information |  |
|---------------------|--|
| Unit Size           | 100 ug                                   |
| Concentration       | 1 mg/ml                                  |
| Storage             | Store at -20C. Avoid freeze-thaw cycles. |
| Clonality           | Monoclonal                               |
| Clone               | RM108                                    |
| Preservative        | No Preservative                          |
| Isotype             | IgG                                      |
| Purity              | Protein A purified                       |
| Buffer              | PBS                                      |

| Product Description     |   |
|-------------------------|---|
| Description             | Novus Biologicals Rabbit IgG2b Antibody (RM108) - Azide and BSA Free (NBP2-62009) is a recombinant monoclonal antibody validated for use in WB and ELISA. All Novus Biologicals antibodies are covered by our 100% guarantee. |
| Host                    | Rabbit  |
| Species                 | Mouse   |
| Specificity/Sensitivity | This antibody reacts to the Fc region of mouse IgG2b. No cross reactivity with mouse IgG1, IgG2a, IgG3, IgM, IgA, IgE, human IgG, rat IgG, or goat IgG.   |
| Immunogen               | Mouse IgG2b   |

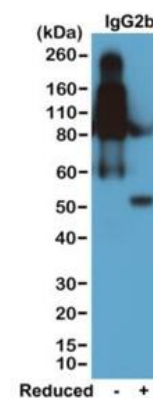
| Product Application Details |   |
|-----------------------------|---|
| Applications                | Western Blot, ELISA   |
| Recommended Dilutions       | Western Blot 0.1 ug/ml-0.5 ug/ml, ELISA 0.005 ug/ml - 0.2 ug/ml |

**Images**

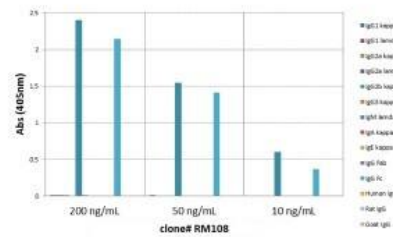
ELISA: IgG2b Antibody (RM108) - Azide and BSA Free [NBP3-25953] - A titer ELISA of mouse IgG2b. The plate was coated with different amounts of mouse IgG2b. A serial dilution of RM108 was used as the primary antibody. An alkaline phosphatase conjugated anti-rabbit IgG as the secondary antibody.



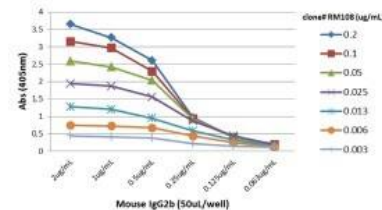
Western Blot: IgG2b Antibody (RM108) - Azide and BSA Free [NBP3-25953] - Western blot of nonreduced(-) and reduced(+) mouse IgG2b (20ng/lane), using Clone RM108. This antibody reacts to nonreduced IgG2b (~150 kDa) much stronger than the reduced g2b form (~50 kDa).



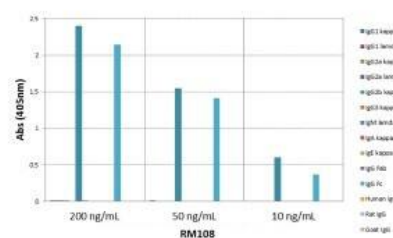
ELISA: IgG2b Antibody (RM108) - Azide and BSA Free [NBP3-25953] - ELISA of mouse immunoglobulins shows RM108 reacts to the Fc region of mouse IgG2b; no cross reactivity with IgG1, IgG2a, IgG3, IgM, IgA, IgE, human IgG, rat IgG, or goat IgG. The plate was coated with 50 ng/well of different immunoglobulins. 200 ng/mL, 50 ng/mL, or 10 ng/mL of RM108 was used as the primary antibody. An alkaline phosphatase conjugated anti-rabbit IgG as the secondary antibody.



ELISA: IgG2b Antibody (RM108) - Azide and BSA Free [NBP3-25953] - A titer ELISA of mouse IgG2b. The plate was coated with different amounts of mouse IgG2b. A serial dilution of RM108 was used as the primary antibody. An alkaline phosphatase conjugated anti-rabbit IgG as the secondary antibody.



ELISA: IgG2b Antibody (RM108) - Azide and BSA Free [NBP3-25953] - ELISA of mouse immunoglobulins shows RM108 reacts to the Fc region of mouse IgG2b; no cross reactivity with IgG1, IgG2a, IgG3, IgM, IgA, IgE, human IgG, rat IgG, or goat IgG. The plate was coated with 50 ng/well of different immunoglobulins. 200 ng/mL, 50 ng/mL, or 10 ng/mL of RM108 was used as the primary antibody. An alkaline phosphatase conjugated anti-rabbit IgG as the secondary antibody.





### **Novus Biologicals USA**

10730 E. Briarwood Avenue  
Centennial, CO 80112  
USA  
Phone: 303.730.1950  
Toll Free: 1.888.506.6887  
Fax: 303.730.1966  
nb-customerservice@bio-techne.com

### **Bio-Techne Canada**

21 Canmotor Ave  
Toronto, ON M8Z 4E6  
Canada  
Phone: 905.827.6400  
Toll Free: 855.668.8722  
Fax: 905.827.6402  
canada.inquires@bio-techne.com

### **Bio-Techne Ltd**

19 Barton Lane  
Abingdon Science Park  
Abingdon, OX14 3NB, United Kingdom  
Phone: (44) (0) 1235 529449  
Free Phone: 0800 37 34 15  
Fax: (44) (0) 1235 533420  
info.EMEA@bio-techne.com

### **General Contact Information**

www.novusbio.com  
Technical Support: nb-technical@bio-techne.com  
Orders: nb-customerservice@bio-techne.com  
General: novus@novusbio.com

### **Products Related to NBP3-25953**

---

|             |   |
|-------------|---|
| NBP2-33376H | Blue Marker Antibody (6F4-F6) [HRP]                 |
| HAF008      | Goat anti-Rabbit IgG Secondary Antibody [HRP]       |
| NB7160      | Goat anti-Rabbit IgG (H+L) Secondary Antibody [HRP] |
| NBP2-24891  | Rabbit IgG Isotype Control                          |

---

### **Limitations**

This product is for research use only and is not approved for use in humans or in clinical diagnosis. Primary Antibodies are guaranteed for 1 year from date of receipt.

For more information on our 100% guarantee, please visit [www.novusbio.com/guarantee](http://www.novusbio.com/guarantee)

Earn gift cards/discounts by submitting a review: [www.novusbio.com/reviews/submit/NBP3-25953](http://www.novusbio.com/reviews/submit/NBP3-25953)

Earn gift cards/discounts by submitting a publication using this product:  
[www.novusbio.com/publications](http://www.novusbio.com/publications)

