

# Product Datasheet

## Lambda Light Chain Antibody (RM110) - Azide and BSA Free NBP3-25947

Unit Size: 100 ug

Store at -20C. Avoid freeze-thaw cycles.

[www.novusbio.com](http://www.novusbio.com)



[technical@novusbio.com](mailto:technical@novusbio.com)

Protocols, Publications, Related Products, Reviews, Research Tools and Images at:  
[www.novusbio.com/NBP3-25947](http://www.novusbio.com/NBP3-25947)

Updated 9/9/2025 v.20.1

Earn rewards for product reviews and publications.

Submit a publication at [www.novusbio.com/publications](http://www.novusbio.com/publications)

Submit a review at [www.novusbio.com/reviews/destination/NBP3-25947](http://www.novusbio.com/reviews/destination/NBP3-25947)



**NBP3-25947**

Lambda Light Chain Antibody (RM110) - Azide and BSA Free

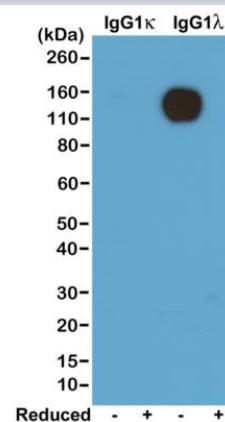
Product Information	
Unit Size	100 ug
Concentration	1 mg/ml
Storage	Store at -20C. Avoid freeze-thaw cycles.
Clonality	Monoclonal
Clone	RM110
Preservative	No Preservative
Isotype	IgG
Purity	Protein A purified
Buffer	PBS

Product Description	
Description	Novus Biologicals Rabbit Lambda Light Chain Antibody (RM110) - Azide and BSA Free (NBP2-61910) is a recombinant monoclonal antibody validated for use in WB and ELISA. All Novus Biologicals antibodies are covered by our 100% guarantee.
Host	Rabbit
Gene ID	3537
Gene Symbol	IGLC1
Species	Mouse
Specificity/Sensitivity	This antibody reacts to the lambda light chain of mouse immunoglobulins. No cross reactivity with the kappa light chain, human IgG, rat IgG, or goat IgG.
Immunogen	Mouse IgM Lambda

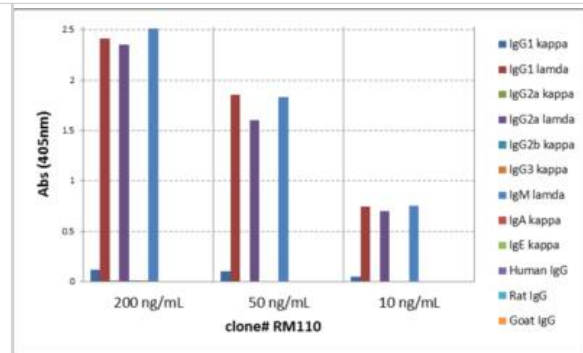
Product Application Details	
Applications	Western Blot, ELISA
Recommended Dilutions	Western Blot 0.1 - 0.5 ug/mL, ELISA 0.005 ug/ml - 0.2 ug/ml

**Images**

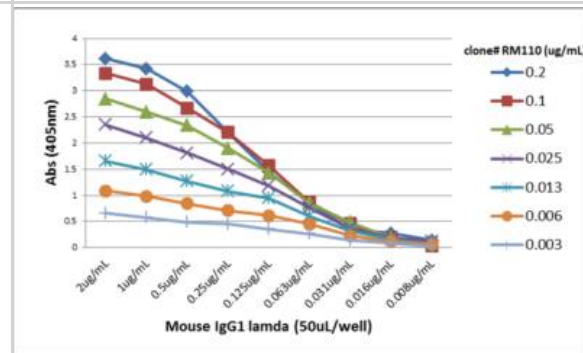
Western Blot: Lambda Light Chain Antibody (RM110) - Azide and BSA Free [NBP3-25947] - Western blot of nonreduced(-) and reduced(+) mouse IgG1k and IgG1l (20ng/lane), using Clone RM110. This antibody reacts to nonreduced IgG1l.



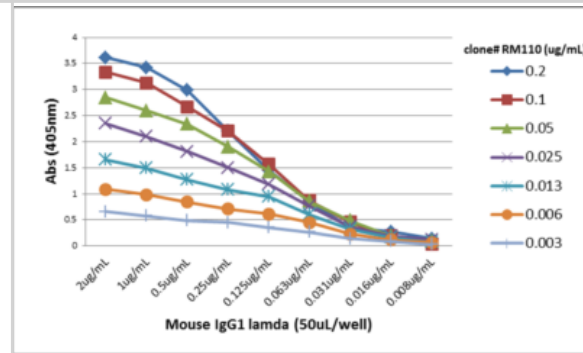
ELISA: Lambda Light Chain Antibody (RM110) - Azide and BSA Free [NBP3-25947] - ELISA of mouse immunoglobulins shows RM110 reacts to the lamda light chain of mouse immunoglobulins. No cross reactivity with the kappa light chain, human IgG, rat IgG, or goat IgG. The plate was coated with 50 ng/well of different immunoglobulins. 200 ng/mL, 50 ng/mL, or 10 ng/mL of RM110 was used as the primary antibody. An alkaline phosphatase conjugated anti-rabbit IgG as the secondary antibody.



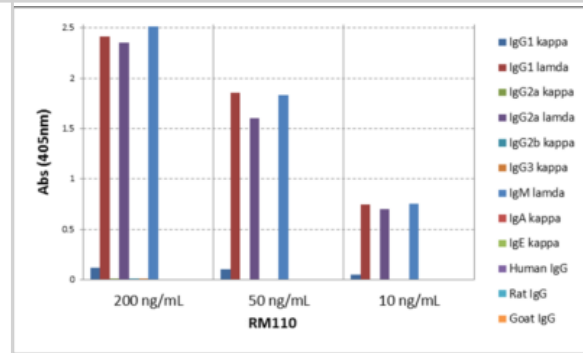
ELISA: Lambda Light Chain Antibody (RM110) - Azide and BSA Free [NBP3-25947] - A titer ELISA of mouse IgG1 lambda. The plate was coated with different amounts of mouse IgG1 lambda. A serial dilution of RM110 was used as the primary antibody. An alkaline phosphatase conjugated anti-rabbit IgG as the secondary antibody.



ELISA: Lambda Light Chain Antibody (RM110) - Azide and BSA Free [NBP3-25947] - A titer ELISA of mouse IgG1 lambda. The plate was coated with different amounts of mouse IgG1 lambda. A serial dilution of RM110 was used as the primary antibody. An alkaline phosphatase conjugated anti-rabbit IgG as the secondary antibody.



ELISA: Lambda Light Chain Antibody (RM110) - Azide and BSA Free [NBP3-25947] - ELISA of mouse immunoglobulins shows RM110 reacts to the lamda light chain of mouse immunoglobulins. No cross reactivity with the kappa light chain, human IgG, rat IgG, or goat IgG. The plate was coated with 50 ng/well of different immunoglobulins. 200 ng/mL, 50 ng/mL, or 10 ng/mL of RM110 was used as the primary antibody. An alkaline phosphatase conjugated anti-rabbit IgG as the secondary antibody.





### **Novus Biologicals USA**

10730 E. Briarwood Avenue  
Centennial, CO 80112  
USA  
Phone: 303.730.1950  
Toll Free: 1.888.506.6887  
Fax: 303.730.1966  
nb-customerservice@bio-techne.com

### **Bio-Techne Canada**

21 Canmotor Ave  
Toronto, ON M8Z 4E6  
Canada  
Phone: 905.827.6400  
Toll Free: 855.668.8722  
Fax: 905.827.6402  
canada.inquires@bio-techne.com

### **Bio-Techne Ltd**

19 Barton Lane  
Abingdon Science Park  
Abingdon, OX14 3NB, United Kingdom  
Phone: (44) (0) 1235 529449  
Free Phone: 0800 37 34 15  
Fax: (44) (0) 1235 533420  
info.EMEA@bio-techne.com

### **General Contact Information**

www.novusbio.com  
Technical Support: nb-technical@bio-techne.com  
Orders: nb-customerservice@bio-techne.com  
General: novus@novusbio.com

### **Products Related to NBP3-25947**

---

NBP2-33376H	Blue Marker Antibody (6F4-F6) [HRP]
HAF008	Goat anti-Rabbit IgG Secondary Antibody [HRP]
NB7160	Goat anti-Rabbit IgG (H+L) Secondary Antibody [HRP]
NBP2-24891	Rabbit IgG Isotype Control

---

### **Limitations**

This product is for research use only and is not approved for use in humans or in clinical diagnosis. Primary Antibodies are guaranteed for 1 year from date of receipt.

For more information on our 100% guarantee, please visit [www.novusbio.com/guarantee](http://www.novusbio.com/guarantee)

Earn gift cards/discounts by submitting a review: [www.novusbio.com/reviews/submit/NBP3-25947](http://www.novusbio.com/reviews/submit/NBP3-25947)

Earn gift cards/discounts by submitting a publication using this product:  
[www.novusbio.com/publications](http://www.novusbio.com/publications)

