

Product Datasheet

TREM2 Antibody (HL1738) - Azide and BSA Free NBP3-25728

Unit Size: 100 ul

Store at 4C short term. Aliquot and store at -20C long term. Avoid freeze-thaw cycles.

www.novusbio.com



technical@novusbio.com

Protocols, Publications, Related Products, Reviews, Research Tools and Images at:
www.novusbio.com/NBP3-25728

Updated 1/12/2026 v.20.1

Earn rewards for product
reviews and publications.

Submit a publication at www.novusbio.com/publications

Submit a review at www.novusbio.com/reviews/destination/NBP3-25728



NBP3-25728

TREM2 Antibody (HL1738) - Azide and BSA Free

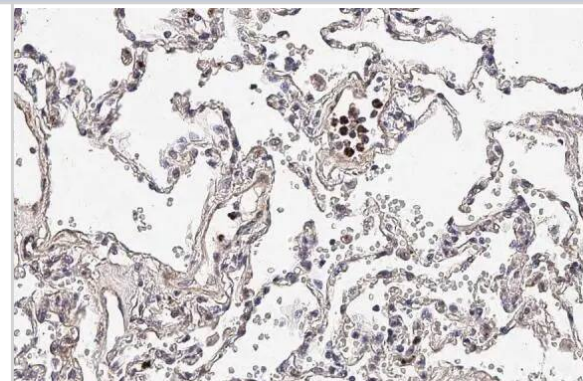
Product Information	
Unit Size	100 ul
Concentration	Concentrations vary lot to lot. See vial label for concentration. If unlisted please contact technical services.
Storage	Store at 4C short term. Aliquot and store at -20C long term. Avoid freeze-thaw cycles.
Clonality	Monoclonal
Clone	HL1738
Preservative	No Preservative
Isotype	IgG
Purity	Protein A purified
Buffer	PBS
Target Molecular Weight	28 kDa

Product Description	
Description	Novus Biologicals Rabbit TREM2 Antibody (HL1738) - Azide and BSA Free (NBP3-25728) is a recombinant monoclonal antibody validated for use in IHC, WB and ICC/IF. All Novus Biologicals antibodies are covered by our 100% guarantee.
Host	Rabbit
Gene ID	54209
Gene Symbol	TREM2
Species	Human
Immunogen	full length human TREM2 recombinant protein.

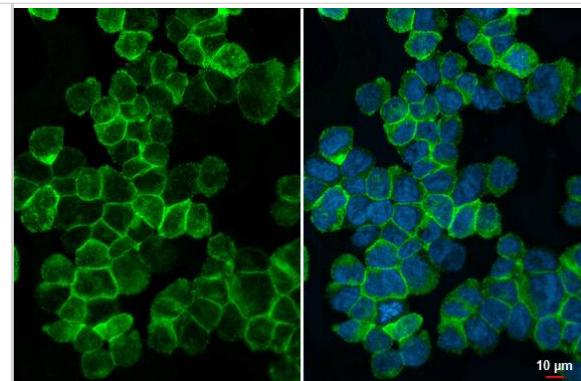
Product Application Details	
Applications	Western Blot, Immunohistochemistry-Paraffin, ELISA, Immunocytochemistry/Immunofluorescence, Immunohistochemistry, Sandwich ELISA
Recommended Dilutions	Western Blot 1:500-1:3000, ELISA Assay dependent, Immunohistochemistry Assay dependent, Immunocytochemistry/ Immunofluorescence Assay dependent, Immunohistochemistry-Paraffin Assay dependent, Sandwich ELISA Assay dependent

Images

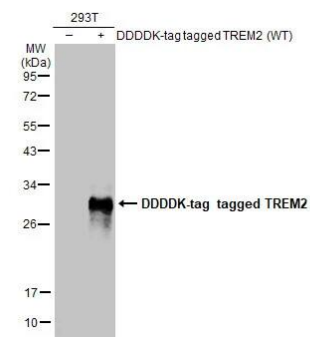
Immunohistochemistry-Paraffin: TREM2 Antibody (HL1738) - Azide and BSA Free [NBP3-25728] - TREM2 antibody [HL1738] detects TREM2 protein at cell membrane by immunohistochemical analysis. Sample: Paraffin-embedded human lung cancer. TREM2 stained by TREM2 antibody [HL1738] (NBP3-25728) diluted at 1:200. Antigen Retrieval: Citrate buffer, pH 6.0, 15 min



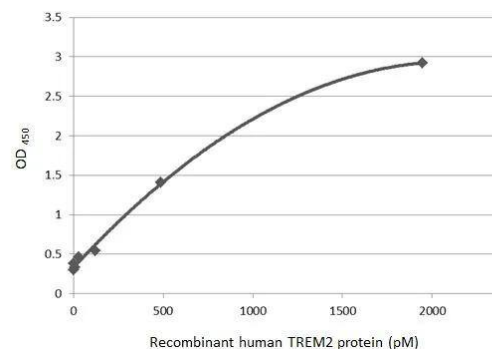
Immunocytochemistry/Immunofluorescence: TREM2 Antibody (HL1738) - Azide and BSA Free [NBP3-25728] - TREM2 antibody [HL1738] detects TREM2 protein at cell membrane and cytoplasm by immunofluorescent analysis. Sample: THP-1 cells were fixed in 4% paraformaldehyde at RT for 15 min. Green: TREM2 stained by TREM2 antibody [HL1738] (NBP3-25728) diluted at 1:250. Blue: Fluoroshield with DAPI .



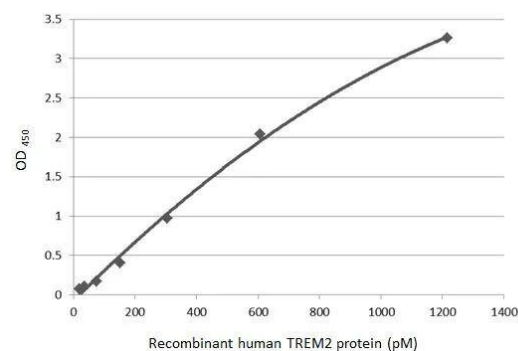
Western Blot: TREM2 Antibody (HL1738) - Azide and BSA Free [NBP3-25728] - Non-transfected (-) and transfected (+) 293T whole cell extracts (30 ug) were separated by 12% SDS-PAGE, and the membrane was blotted with TREM2 antibody [HL1738] (NBP3-25728) diluted at 1:500. The HRP-conjugated anti-rabbit IgG antibody was used to detect the primary antibody.



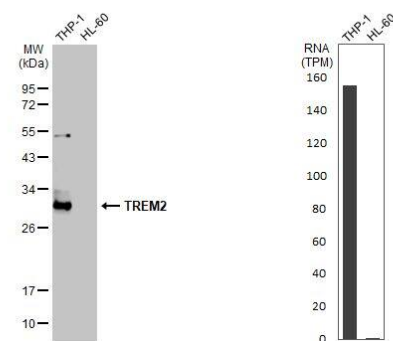
Sandwich ELISA detection of recombinant E.coli expressed, full-length human TREM2 protein using antibodies as below. **Capture:** TREM2 antibody [HL1739] (1 ug/mL) Please notice that NBP3-25728 needs to be conjugated to HRP to function as the detection antibody when paired with GTX637387. Please contact us for custom HRP-conjugated antibody.



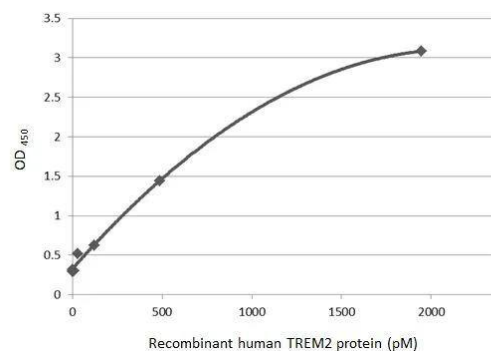
Indirect ELISA analysis was performed by coating the plate with recombinant E.coli expressed, full-length human TREM2 protein (1215.95-19.07 pM). Coated protein was probed with TREM2 antibody [HL1738] (NBP3-25728) (1 ug/mL). Goat anti-rabbit IgG antibody (HRP) was used to detect the bound primary antibody.



Various whole cell extracts (30 ug) were separated by 12% SDS-PAGE, and the membrane was blotted with TREM2 antibody [HL1738] (NBP3-25728) diluted at 1:2000. The HRP-conjugated anti-rabbit IgG antibody was used to detect the primary antibody, and the signal was developed with Trident ECL plus-Enhanced. Corresponding RNA expression data for the same cell lines are based on Human Protein Atlas program.



Sandwich ELISA detection of recombinant E.coli expressed, full-length human TREM2 protein using antibodies as below. **Capture:** TREM2 antibody [HL1738] (NBP3-25728) (5 ug/mL) **Detection:** HRP-conjugated TREM2 antibody [HL1739] (1 ug/mL) Please notice that GTX637387 needs to be conjugated to HRP to function as the detection antibody when paired with NBP3-25728. Please contact us for custom HRP-conjugated antibody.





Novus Biologicals USA

10730 E. Briarwood Avenue
Centennial, CO 80112
USA
Phone: 303.730.1950
Toll Free: 1.888.506.6887
Fax: 303.730.1966
nb-customerservice@bio-techne.com

Bio-Techne Canada

21 Canmotor Ave
Toronto, ON M8Z 4E6
Canada
Phone: 905.827.6400
Toll Free: 855.668.8722
Fax: 905.827.6402
canada.inquires@bio-techne.com

Bio-Techne Ltd

19 Barton Lane
Abingdon Science Park
Abingdon, OX14 3NB, United Kingdom
Phone: (44) (0) 1235 529449
Free Phone: 0800 37 34 15
Fax: (44) (0) 1235 533420
info.EMEA@bio-techne.com

General Contact Information

www.novusbio.com
Technical Support: nb-technical@bio-techne.com
Orders: nb-customerservice@bio-techne.com
General: novus@novusbio.com

Products Related to NBP3-25728

NBP2-33376H	Blue Marker Antibody (6F4-F6) [HRP]
HAF008	Goat anti-Rabbit IgG Secondary Antibody [HRP]
NB7160	Goat anti-Rabbit IgG (H+L) Secondary Antibody [HRP]
NBP2-24891	Rabbit IgG Isotype Control

Limitations

This product is for research use only and is not approved for use in humans or in clinical diagnosis. Primary Antibodies are guaranteed for 1 year from date of receipt.

For more information on our 100% guarantee, please visit www.novusbio.com/guarantee

Earn gift cards/discounts by submitting a review: www.novusbio.com/reviews/submit/NBP3-25728

Earn gift cards/discounts by submitting a publication using this product:
www.novusbio.com/publications

