

# Product Datasheet

## KLF5 Antibody (HL2269) - Azide and BSA Free NBP3-25544

Unit Size: 100 ul

Store at 4C short term. Aliquot and store at -20C long term. Avoid freeze-thaw cycles.

[www.novusbio.com](http://www.novusbio.com)



[technical@novusbio.com](mailto:technical@novusbio.com)

Protocols, Publications, Related Products, Reviews, Research Tools and Images at:  
[www.novusbio.com/NBP3-25544](http://www.novusbio.com/NBP3-25544)

Updated 9/9/2025 v.20.1

Earn rewards for product  
reviews and publications.

Submit a publication at [www.novusbio.com/publications](http://www.novusbio.com/publications)

Submit a review at [www.novusbio.com/reviews/destination/NBP3-25544](http://www.novusbio.com/reviews/destination/NBP3-25544)



**NBP3-25544**

KLF5 Antibody (HL2269) - Azide and BSA Free

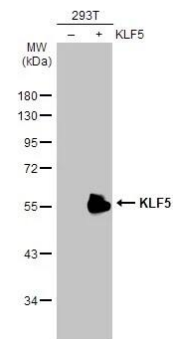
| Product Information |  |
|---------------------|--|
| Unit Size           | 100 ul   |
| Concentration       | Concentrations vary lot to lot. See vial label for concentration. If unlisted please contact technical services. |
| Storage             | Store at 4C short term. Aliquot and store at -20C long term. Avoid freeze-thaw cycles.                           |
| Clonality           | Monoclonal   |
| Clone               | HL2269   |
| Preservative        | No Preservative  |
| Isotype             | IgG  |
| Purity              | Protein A purified   |
| Buffer              | PBS  |

| Product Description |   |
|---------------------|---|
| Description         | Novus Biologicals Rabbit KLF5 Antibody (HL2269) - Azide and BSA Free (NBP3-25544) is a recombinant monoclonal antibody validated for use in IHC and WB. All Novus Biologicals antibodies are covered by our 100% guarantee. |
| Host                | Rabbit  |
| Gene ID             | 688   |
| Gene Symbol         | KLF5  |
| Species             | Human, Mouse, Rat   |
| Immunogen           | Recombinant fragment of human KLF5.   |

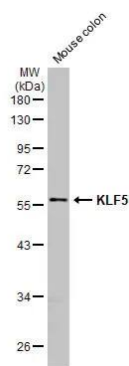
| Product Application Details |  |
|-----------------------------|--|
| Applications                | Western Blot, Immunohistochemistry-Paraffin, Immunohistochemistry              |
| Recommended Dilutions       | Western Blot 1:500-1:3000, Immunohistochemistry, Immunohistochemistry-Paraffin |

**Images**

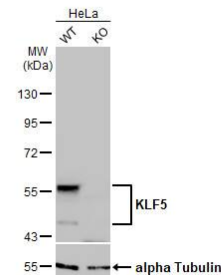
Western Blot: KLF5 Antibody (HL2269) - Azide and BSA Free [NBP3-25544] - Non-transfected (-) and transfected (+) 293T whole cell extracts (30 ug) were separated by 10% SDS-PAGE, and the membrane was blotted with KLF5 antibody [HL2269] (NBP3-25544) diluted at 1:5000. The HRP-conjugated anti-rabbit IgG antibody was used to detect the primary antibody.



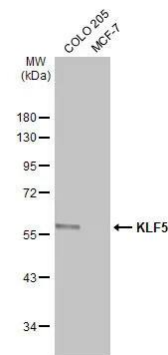
Western Blot: KLF5 Antibody (HL2269) - Azide and BSA Free [NBP3-25544] - Mouse tissue extract (50 ug) was separated by 10% SDS-PAGE, and the membrane was blotted with KLF5 antibody [HL2269] (NBP3-25544) diluted at 1:1000. The HRP-conjugated anti-rabbit IgG antibody was used to detect the primary antibody, and the signal was developed with Trident ECL plus-Enhanced.



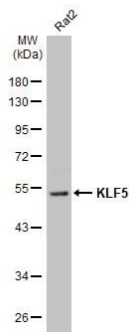
Western Blot: KLF5 Antibody (HL2269) - Azide and BSA Free [NBP3-25544] - Wild-type (WT) and KLF5 knockout (KO) HeLa cell extracts (30 ug) were separated by 10% SDS-PAGE, and the membrane was blotted with KLF5 antibody [HL2269] (NBP3-25544) diluted at 1:1000. The HRP-conjugated anti-rabbit IgG antibody was used to detect the primary antibody.



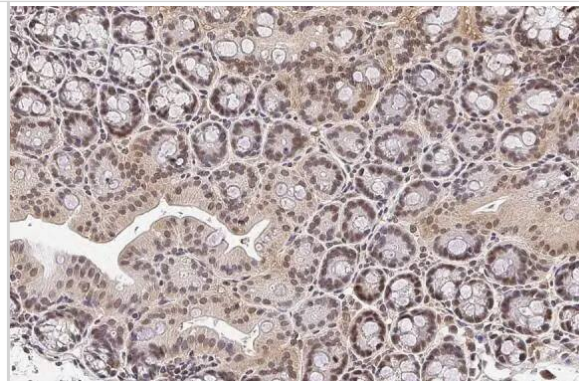
Western Blot: KLF5 Antibody (HL2269) - Azide and BSA Free [NBP3-25544] - Various whole cell extracts (30 ug) were separated by 10% SDS-PAGE, and the membrane was blotted with KLF5 antibody [HL2269] (NBP3-25544) diluted at 1:1000. The HRP-conjugated anti-rabbit IgG antibody was used to detect the primary antibody.



Western Blot: KLF5 Antibody (HL2269) - Azide and BSA Free [NBP3-25544] - Whole cell extract (50 ug) was separated by 10% SDS-PAGE, and the membrane was blotted with KLF5 antibody [HL2269] (NBP3-25544) diluted at 1:1000. The HRP-conjugated anti-rabbit IgG antibody was used to detect the primary antibody.



Immunohistochemistry-Paraffin: KLF5 Antibody (HL2269) - Azide and BSA Free [NBP3-25544] - KLF5 antibody [HL2269] detects KLF5 protein at nucleus by immunohistochemical analysis. Sample: Paraffin-embedded mouse colon. KLF5 stained by KLF5 antibody [HL2269] (NBP3-25544) diluted at 1:100. Antigen Retrieval: Citrate buffer, pH 6.0, 15 min



Immunohistochemistry-Paraffin: KLF5 Antibody (HL2269) - Azide and BSA Free [NBP3-25544] - KLF5 antibody [HL2269] detects KLF5 protein by immunohistochemical analysis. Sample: Paraffin-embedded mouse tissues. KLF5 stained by KLF5 antibody [HL2269] (NBP3-25544) diluted at 1:100. Antigen Retrieval: Citrate buffer, pH 6.0, 15 min





### **Novus Biologicals USA**

10730 E. Briarwood Avenue  
Centennial, CO 80112  
USA  
Phone: 303.730.1950  
Toll Free: 1.888.506.6887  
Fax: 303.730.1966  
nb-customerservice@bio-techne.com

### **Bio-Techne Canada**

21 Canmotor Ave  
Toronto, ON M8Z 4E6  
Canada  
Phone: 905.827.6400  
Toll Free: 855.668.8722  
Fax: 905.827.6402  
canada.inquires@bio-techne.com

### **Bio-Techne Ltd**

19 Barton Lane  
Abingdon Science Park  
Abingdon, OX14 3NB, United Kingdom  
Phone: (44) (0) 1235 529449  
Free Phone: 0800 37 34 15  
Fax: (44) (0) 1235 533420  
info.EMEA@bio-techne.com

### **General Contact Information**

www.novusbio.com  
Technical Support: nb-technical@bio-techne.com  
Orders: nb-customerservice@bio-techne.com  
General: novus@novusbio.com

### **Products Related to NBP3-25544**

---

|             |   |
|-------------|---|
| NBP2-33376H | Blue Marker Antibody (6F4-F6) [HRP]                 |
| HAF008      | Goat anti-Rabbit IgG Secondary Antibody [HRP]       |
| NB7160      | Goat anti-Rabbit IgG (H+L) Secondary Antibody [HRP] |
| NBP2-24891  | Rabbit IgG Isotype Control                          |

---

### **Limitations**

This product is for research use only and is not approved for use in humans or in clinical diagnosis. Primary Antibodies are guaranteed for 1 year from date of receipt.

For more information on our 100% guarantee, please visit [www.novusbio.com/guarantee](http://www.novusbio.com/guarantee)

Earn gift cards/discounts by submitting a review: [www.novusbio.com/reviews/submit/NBP3-25544](http://www.novusbio.com/reviews/submit/NBP3-25544)

Earn gift cards/discounts by submitting a publication using this product:  
[www.novusbio.com/publications](http://www.novusbio.com/publications)

