

Product Datasheet

IGF-II/IGF2 Antibody (HL1982) - Azide and BSA Free NBP3-25520

Unit Size: 100 ul

Store at 4C short term. Aliquot and store at -20C long term. Avoid freeze-thaw cycles.

www.novusbio.com



technical@novusbio.com

Protocols, Publications, Related Products, Reviews, Research Tools and Images at:
www.novusbio.com/NBP3-25520

Updated 3/4/2026 v.20.1

Earn rewards for product
reviews and publications.

Submit a publication at www.novusbio.com/publications

Submit a review at www.novusbio.com/reviews/destination/NBP3-25520



NBP3-25520

IGF-II/IGF2 Antibody (HL1982) - Azide and BSA Free

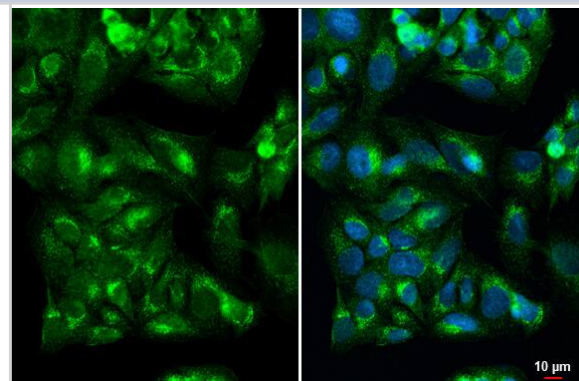
Product Information	
Unit Size	100 ul
Concentration	Concentrations vary lot to lot. See vial label for concentration. If unlisted please contact technical services.
Storage	Store at 4C short term. Aliquot and store at -20C long term. Avoid freeze-thaw cycles.
Clonality	Monoclonal
Clone	HL1982
Preservative	No Preservative
Isotype	IgG
Purity	Protein A purified
Buffer	PBS

Product Description	
Host	Rabbit
Gene ID	3481
Gene Symbol	IGF2
Species	Human, Mouse
Reactivity Notes	Immunogen displays the following percentage of sequence identity for non-tested species: Rat (85%), Sheep (87%), Bovine (87%).
Immunogen	Recombinant fragment of human IGF-II/IGF2

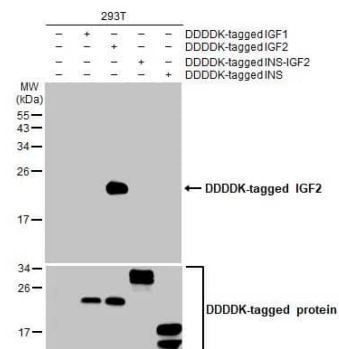
Product Application Details	
Applications	Western Blot, ELISA, Immunocytochemistry/ Immunofluorescence, Sandwich ELISA
Recommended Dilutions	Western Blot 1:500-1:3000, ELISA Assay dependent, Immunocytochemistry/ Immunofluorescence Assay dependent, Sandwich ELISA Assay dependent

Images

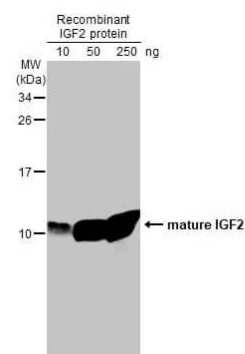
Immunocytochemistry/Immunofluorescence: IGF-II/IGF2 Antibody (HL1982) - Azide and BSA Free [NBP3-25520] - IGF2 antibody [HL1982] detects IGF2 protein at cytoplasm by immunofluorescent analysis. Sample: HepG2 cells were fixed in 4% paraformaldehyde at RT for 15 min. Green: IGF2 stained by IGF2 antibody [HL1982] (NBP3-25520) diluted at 1:500. Blue: Fluoroshield with DAPI .



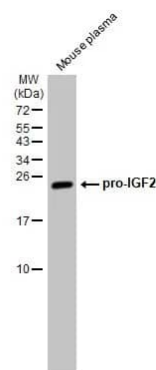
Western Blot: IGF-II/IGF2 Antibody (HL1982) - Azide and BSA Free [NBP3-25520] - Non-transfected (-) and transfected (+) 293T whole cell extracts (30 ug) were separated by 15% SDS-PAGE, and the membrane was blotted with IGF2 antibody [HL1982] (NBP3-25520) diluted at 1:5000. The HRP-conjugated anti-rabbit IgG antibody was used to detect the primary antibody.



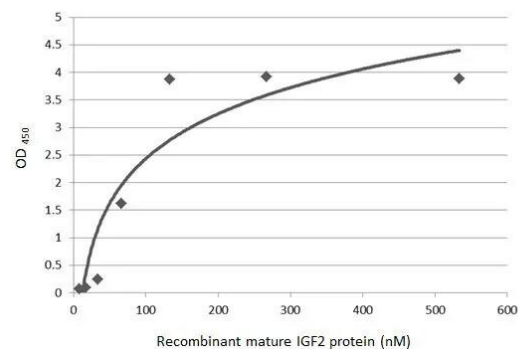
Western Blot: IGF-II/IGF2 Antibody (HL1982) - Azide and BSA Free [NBP3-25520] - Recombinant IGF2 protein were separated by 15% SDS-PAGE, and the membrane was blotted with IGF2 antibody [HL1982] (NBP3-25520) diluted at 1:2000. The HRP-conjugated anti-rabbit IgG antibody was used to detect the primary antibody.



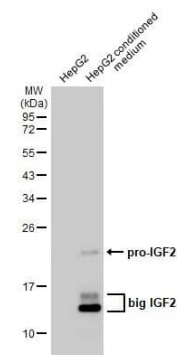
Western Blot: IGF-II/IGF2 Antibody (HL1982) - Azide and BSA Free [NBP3-25520] - Mouse plasma (30 ug) was separated by 15% SDS-PAGE, and the membrane was blotted with IGF2 antibody [HL1982] (NBP3-25520) diluted at 1:1000. The HRP-conjugated anti-rabbit IgG antibody was used to detect the primary antibody.



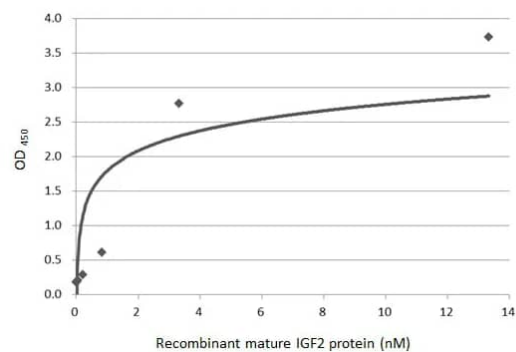
ELISA: IGF-II/IGF2 Antibody (HL1982) - Azide and BSA Free [NBP3-25520] - Indirect ELISA analysis was performed by coating the plate with recombinant E.coli expressed, mature recombinant human IGF2 protein (533.33-8.33 nM). Coated protein was probed with IGF2 antibody [HL1982] (NBP3-25520) (1 ug/mL). Goat anti-rabbit IgG antibody (HRP) (1:10000) was used to detect the bound primary antibody.



Western Blot: IGF-II/IGF2 Antibody (HL1982) - Azide and BSA Free [NBP3-25520] - HepG2 whole cell extract and conditioned medium (30 ug) were separated by 12% SDS-PAGE, and the membrane was blotted with IGF2 antibody [HL1982] (NBP3-25520) diluted at 1:1000. The HRP-conjugated anti-rabbit IgG antibody was used to detect the primary antibody.



IGF2 antibody [HL2937] (5 µg/mL) Detection: HRP-conjugated IGF2 antibody [HL1982] (1 µg/mL). Please notice that the detection antibody requires HRP to function as the detection antibody when paired with capture antibody. Please contact us for the conjugation service.





Novus Biologicals USA

10730 E. Briarwood Avenue
Centennial, CO 80112
USA
Phone: 303.730.1950
Toll Free: 1.888.506.6887
Fax: 303.730.1966
nb-customerservice@bio-techne.com

Bio-Techne Canada

21 Canmotor Ave
Toronto, ON M8Z 4E6
Canada
Phone: 905.827.6400
Toll Free: 855.668.8722
Fax: 905.827.6402
canada.inquires@bio-techne.com

Bio-Techne Ltd

19 Barton Lane
Abingdon Science Park
Abingdon, OX14 3NB, United Kingdom
Phone: (44) (0) 1235 529449
Free Phone: 0800 37 34 15
Fax: (44) (0) 1235 533420
info.EMEA@bio-techne.com

General Contact Information

www.novusbio.com
Technical Support: nb-technical@bio-techne.com
Orders: nb-customerservice@bio-techne.com
General: novus@novusbio.com

Products Related to NBP3-25520

HAF008	Goat anti-Rabbit IgG Secondary Antibody [HRP]
NB7160	Goat anti-Rabbit IgG (H+L) Secondary Antibody [HRP]
NBP2-24891	Rabbit IgG Isotype Control
NBP2-59722-10ug	Recombinant Human IGF-II/IGF2 Protein

Limitations

This product is for research use only and is not approved for use in humans or in clinical diagnosis. Primary Antibodies are guaranteed for 1 year from date of receipt.

For more information on our 100% guarantee, please visit www.novusbio.com/guarantee

Earn gift cards/discounts by submitting a review: www.novusbio.com/reviews/submit/NBP3-25520

Earn gift cards/discounts by submitting a publication using this product:
www.novusbio.com/publications

