

# Product Datasheet

## Dopamine beta-Hydroxylase Antibody (HL1163) - Azide and BSA Free NBP3-25442

Unit Size: 100 ul

Store at 4C short term. Aliquot and store at -20C long term. Avoid freeze-thaw cycles.

[www.novusbio.com](http://www.novusbio.com)



[technical@novusbio.com](mailto:technical@novusbio.com)

Protocols, Publications, Related Products, Reviews, Research Tools and Images at:  
[www.novusbio.com/NBP3-25442](http://www.novusbio.com/NBP3-25442)

Updated 9/9/2025 v.20.1

Earn rewards for product  
reviews and publications.

Submit a publication at [www.novusbio.com/publications](http://www.novusbio.com/publications)

Submit a review at [www.novusbio.com/reviews/destination/NBP3-25442](http://www.novusbio.com/reviews/destination/NBP3-25442)



**NBP3-25442**

Dopamine beta-Hydroxylase Antibody (HL1163) - Azide and BSA Free

Product Information	
Unit Size	100 ul
Concentration	Concentrations vary lot to lot. See vial label for concentration. If unlisted please contact technical services.
Storage	Store at 4C short term. Aliquot and store at -20C long term. Avoid freeze-thaw cycles.
Clonality	Monoclonal
Clone	HL1163
Preservative	No Preservative
Isotype	IgG
Purity	Protein A purified
Buffer	PBS

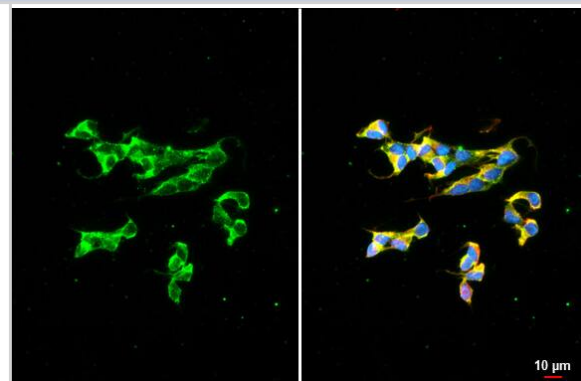
Product Description	
Description	Novus Biologicals Rabbit Dopamine beta-Hydroxylase Antibody (HL1163) - Azide and BSA Free (NBP3-25442) is a recombinant monoclonal antibody validated for use in WB and ICC/IF. All Novus Biologicals antibodies are covered by our 100% guarantee.
Host	Rabbit
Gene ID	1621
Gene Symbol	DBH
Species	Human
Reactivity Notes	Immunogen displays the following percentage of sequence identity for non-tested species: Bovine (80%), Rhesus Macaque (86%).
Immunogen	Recombinant protein encompassing a sequence within the center region of human Dopamine beta-Hydroxylase. The exact sequence is proprietary.

Product Application Details	
Applications	Western Blot, Immunocytochemistry/ Immunofluorescence
Recommended Dilutions	Western Blot 1:500-1:3000, Immunocytochemistry/ Immunofluorescence

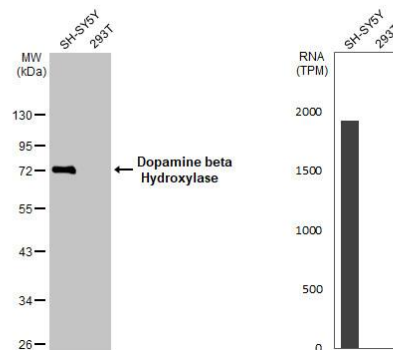


## Images

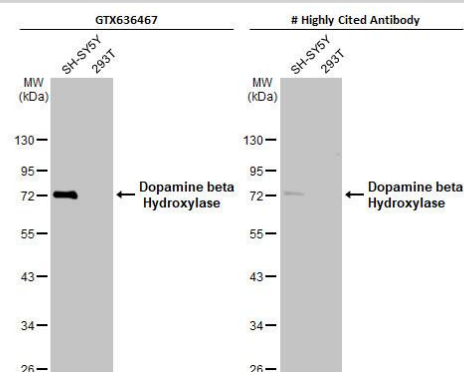
**Immunocytochemistry/Immunofluorescence: Dopamine beta-Hydroxylase Antibody (HL1163) - Azide and BSA Free [NBP3-25442] - Dopamine beta Hydroxylase antibody [HL1163] detects Dopamine beta Hydroxylase protein at cytoplasm by immunofluorescent analysis.**  
**Sample:** SH-SY5Y cells were fixed in 4% paraformaldehyde at RT for 15 min. **Green:** Dopamine beta Hydroxylase stained by Dopamine beta Hydroxylase antibody [HL1163] (NBP3-25442) diluted at 1:200. **Red:** alpha Tubulin, a cytoskeleton marker, stained by alpha Tubulin antibody [GT114] (NBP2-43837) diluted at 1:1000. **Blue:** Fluoroshield with DAPI. **Scale bar= 10um.**



**Western Blot: Dopamine beta-Hydroxylase Antibody (HL1163) - Azide and BSA Free [NBP3-25442] - Various whole cell extracts (30 ug) were separated by 10% SDS-PAGE, and the membrane was blotted with Dopamine beta Hydroxylase antibody [HL1163] (NBP3-25442) diluted at 1:1000. The HRP-conjugated anti-rabbit IgG antibody was used to detect the primary antibody, and the signal was developed with Trident ECL plus-Enhanced. Corresponding RNA expression data for the same cell lines are based on Human Protein Atlas program.**



**Western Blot: Dopamine beta-Hydroxylase Antibody (HL1163) - Azide and BSA Free [NBP3-25442] - Various whole cell extracts (30 ug) were separated by 10% SDS-PAGE, and the membranes were blotted with Dopamine beta Hydroxylase antibody [HL1163] (NBP3-25442) diluted at 1:1000 and competitor's antibody (# Highly Cited Antibody) diluted at 1:200. The HRP-conjugated anti-rabbit IgG antibody was used to detect the primary antibody, and the signal was developed with Trident ECL plus-Enhanced.**





### **Novus Biologicals USA**

10730 E. Briarwood Avenue  
Centennial, CO 80112  
USA  
Phone: 303.730.1950  
Toll Free: 1.888.506.6887  
Fax: 303.730.1966  
nb-customerservice@bio-techne.com

### **Bio-Techne Canada**

21 Canmotor Ave  
Toronto, ON M8Z 4E6  
Canada  
Phone: 905.827.6400  
Toll Free: 855.668.8722  
Fax: 905.827.6402  
canada.inquires@bio-techne.com

### **Bio-Techne Ltd**

19 Barton Lane  
Abingdon Science Park  
Abingdon, OX14 3NB, United Kingdom  
Phone: (44) (0) 1235 529449  
Free Phone: 0800 37 34 15  
Fax: (44) (0) 1235 533420  
info.EMEA@bio-techne.com

### **General Contact Information**

www.novusbio.com  
Technical Support: nb-technical@bio-techne.com  
Orders: nb-customerservice@bio-techne.com  
General: novus@novusbio.com

### **Products Related to NBP3-25442**

---

NBP2-33376H	Blue Marker Antibody (6F4-F6) [HRP]
HAF008	Goat anti-Rabbit IgG Secondary Antibody [HRP]
NB7160	Goat anti-Rabbit IgG (H+L) Secondary Antibody [HRP]
NBP2-24891	Rabbit IgG Isotype Control

---

### **Limitations**

This product is for research use only and is not approved for use in humans or in clinical diagnosis. Primary Antibodies are guaranteed for 1 year from date of receipt.

For more information on our 100% guarantee, please visit [www.novusbio.com/guarantee](http://www.novusbio.com/guarantee)

Earn gift cards/discounts by submitting a review: [www.novusbio.com/reviews/submit/NBP3-25442](http://www.novusbio.com/reviews/submit/NBP3-25442)

Earn gift cards/discounts by submitting a publication using this product:  
[www.novusbio.com/publications](http://www.novusbio.com/publications)

