

# Product Datasheet

## C-Peptide Antibody (HL1159) - Azide and BSA Free NBP3-25422

Unit Size: 100 ul

Store at 4C short term. Aliquot and store at -20C long term. Avoid freeze-thaw cycles.

[www.novusbio.com](http://www.novusbio.com)



[technical@novusbio.com](mailto:technical@novusbio.com)

Protocols, Publications, Related Products, Reviews, Research Tools and Images at:  
[www.novusbio.com/NBP3-25422](http://www.novusbio.com/NBP3-25422)

Updated 9/9/2025 v.20.1

Earn rewards for product  
reviews and publications.

Submit a publication at [www.novusbio.com/publications](http://www.novusbio.com/publications)

Submit a review at [www.novusbio.com/reviews/destination/NBP3-25422](http://www.novusbio.com/reviews/destination/NBP3-25422)



**NBP3-25422**

C-Peptide Antibody (HL1159) - Azide and BSA Free

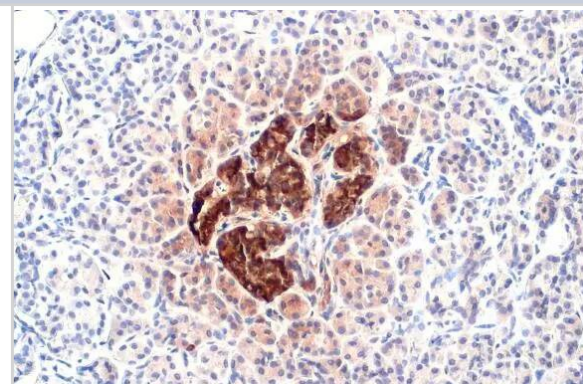
Product Information	
Unit Size	100 ul
Concentration	Concentrations vary lot to lot. See vial label for concentration. If unlisted please contact technical services.
Storage	Store at 4C short term. Aliquot and store at -20C long term. Avoid freeze-thaw cycles.
Clonality	Monoclonal
Clone	HL1159
Preservative	No Preservative
Isotype	IgG
Purity	Protein A purified
Buffer	PBS
Target Molecular Weight	12 kDa

Product Description	
Description	Novus Biologicals Rabbit C-Peptide Antibody (HL1159) - Azide and BSA Free (NBP3-25422) is a recombinant monoclonal antibody validated for use in IHC and ELISA. All Novus Biologicals antibodies are covered by our 100% guarantee.
Host	Rabbit
Gene ID	3630
Gene Symbol	INS
Species	Human, Mouse, Rat
Immunogen	Synthetic peptide corresponding to human C-Peptide.

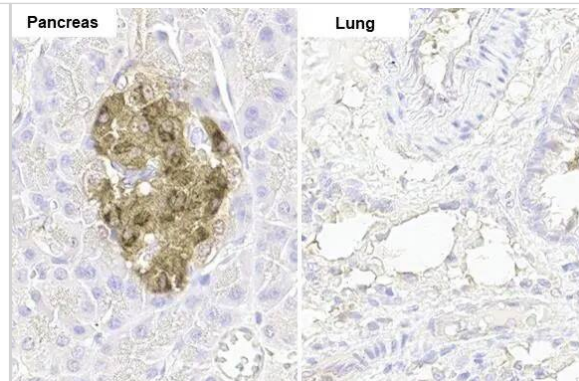
Product Application Details	
Applications	Immunohistochemistry-Paraffin, ELISA, Immunohistochemistry
Recommended Dilutions	ELISA Assay dependent, Immunohistochemistry, Immunohistochemistry-Paraffin 1:100-1:10000

**Images**

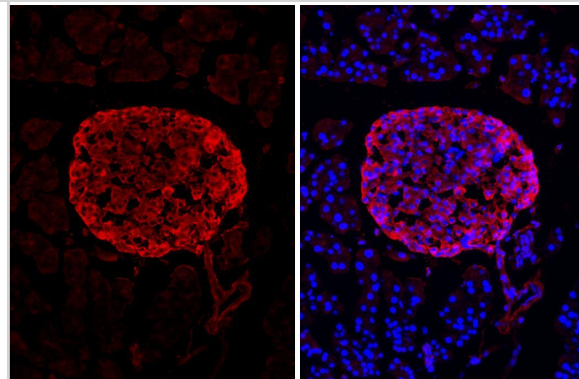
Immunohistochemistry-Paraffin: C-Peptide Antibody (HL1159) - Azide and BSA Free [NBP3-25422] - C-Peptide antibody [HL1159] detects secreted C-Peptide protein by immunohistochemical analysis. Sample: Paraffin-embedded human pancreas. C-Peptide stained by C-Peptide antibody [HL1159] (NBP3-25422) diluted at 1:10000. Antigen Retrieval: Citrate buffer, pH 6.0, 15 min



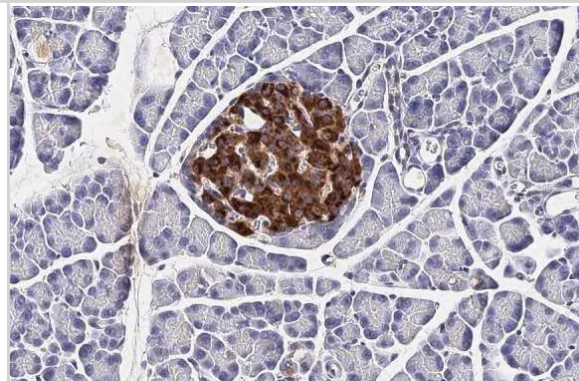
Immunohistochemistry-Paraffin: C-Peptide Antibody (HL1159) - Azide and BSA Free [NBP3-25422] - C-Peptide antibody [HL1159] detects C-Peptide protein by immunohistochemical analysis. Sample: Paraffin-embedded rat tissues. C-Peptide stained by C-Peptide antibody [HL1159] (NBP3-25422) diluted at 1:100. Antigen Retrieval: Citrate buffer, pH 6.0, 15 min



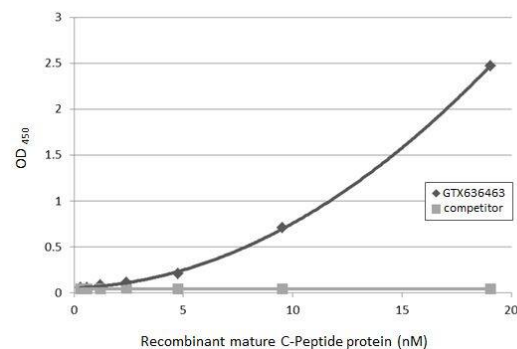
C-Peptide antibody [HL1159] detects C-Peptide protein by immunohistochemical analysis. Sample: Frozen-sectioned mouse pancreas. Green: C-Peptide stained by C-Peptide antibody [HL1159] (NBP3-25422) diluted at 1:500. Blue: Fluoroshield with DAPI .



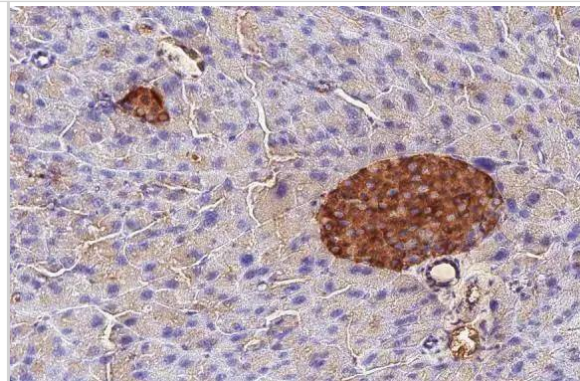
C-Peptide antibody [HL1159] detects secreted C-Peptide protein by immunohistochemical analysis. Sample: Paraffin-embedded rat pancreas. C-Peptide stained by C-Peptide antibody [HL1159] (NBP3-25422) diluted at 1:100. Antigen Retrieval: Citrate buffer, pH 6.0, 15 min



Indirect ELISA analysis was performed by coating the plate with recombinant mature C-Peptide protein (19.05-0.3 nM). Coated protein was probed with C-Peptide antibody [HL1159] (NBP3-25422) (1 ug/mL). Goat anti-rabbit IgG antibody (HRP) (1:10000) was used to detect the bound primary antibody.



C-Peptide antibody [HL1159] detects secreted C-Peptide protein by immunohistochemical analysis. Sample: Paraffin-embedded mouse pancreas. C-Peptide stained by C-Peptide antibody [HL1159] (NBP3-25422) diluted at 1:100. Antigen Retrieval: Citrate buffer, pH 6.0, 15 min





### **Novus Biologicals USA**

10730 E. Briarwood Avenue  
Centennial, CO 80112  
USA  
Phone: 303.730.1950  
Toll Free: 1.888.506.6887  
Fax: 303.730.1966  
nb-customerservice@bio-techne.com

### **Bio-Techne Canada**

21 Canmotor Ave  
Toronto, ON M8Z 4E6  
Canada  
Phone: 905.827.6400  
Toll Free: 855.668.8722  
Fax: 905.827.6402  
canada.inquires@bio-techne.com

### **Bio-Techne Ltd**

19 Barton Lane  
Abingdon Science Park  
Abingdon, OX14 3NB, United Kingdom  
Phone: (44) (0) 1235 529449  
Free Phone: 0800 37 34 15  
Fax: (44) (0) 1235 533420  
info.EMEA@bio-techne.com

### **General Contact Information**

www.novusbio.com  
Technical Support: nb-technical@bio-techne.com  
Orders: nb-customerservice@bio-techne.com  
General: novus@novusbio.com

### **Products Related to NBP3-25422**

---

HAF008	Goat anti-Rabbit IgG Secondary Antibody [HRP]
NB7160	Goat anti-Rabbit IgG (H+L) Secondary Antibody [HRP]
NBP2-24891	Rabbit IgG Isotype Control
236-EG-200	EGF [Unconjugated]

---

### **Limitations**

This product is for research use only and is not approved for use in humans or in clinical diagnosis. Primary Antibodies are guaranteed for 1 year from date of receipt.

For more information on our 100% guarantee, please visit [www.novusbio.com/guarantee](http://www.novusbio.com/guarantee)

Earn gift cards/discounts by submitting a review: [www.novusbio.com/reviews/submit/NBP3-25422](http://www.novusbio.com/reviews/submit/NBP3-25422)

Earn gift cards/discounts by submitting a publication using this product:  
[www.novusbio.com/publications](http://www.novusbio.com/publications)

