

Product Datasheet

Golgi Glycoprotein 1/GLG1 Antibody (GLG1/4830) - BSA Free NBP3-20872

Unit Size: 100 ug

Store at -20 to -70C. Avoid freeze-thaw cycles.

www.novusbio.com



technical@novusbio.com

Protocols, Publications, Related Products, Reviews, Research Tools and Images at:
www.novusbio.com/NBP3-20872

Updated 7/16/2024 v.20.1

**Earn rewards for product
reviews and publications.**

Submit a publication at www.novusbio.com/publications

Submit a review at www.novusbio.com/reviews/destination/NBP3-20872



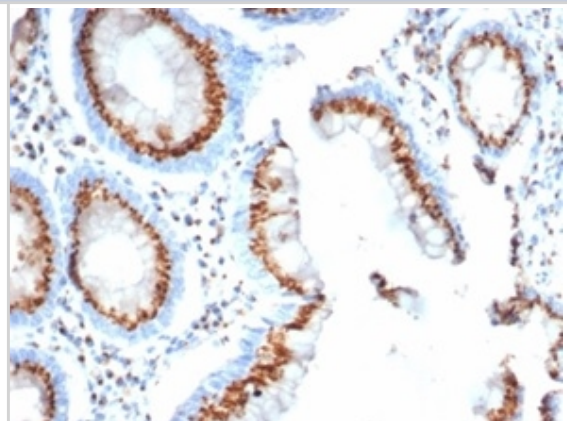
NBP3-20872

Golgi Glycoprotein 1/GLG1 Antibody (GLG1/4830) - BSA Free

Product Information	
Unit Size	100 ug
Concentration	1 mg/ml
Storage	Store at -20 to -70C. Avoid freeze-thaw cycles.
Clonality	Monoclonal
Clone	GLG1/4830
Preservative	0.05% Sodium Azide
Isotype	IgG2b Kappa
Purity	Protein A or G purified
Buffer	10mM PBS
Product Description	
Description	Positive Controls: HepG2, A431 or HeLa cells. Human placenta, tonsil or ovary. Antibody with azide - store at 2 to 8 C. Antibody without azide - store at -20 to -80 C. Non-hazardous. No MSDS required.
Host	Mouse
Gene ID	2734
Gene Symbol	GLG1
Species	Human
Specificity/Sensitivity	This monoclonal antibody can be used to stain the Golgi complex in cell or tissue preparations and can be used as a Golgi marker in subcellular fractions It produces a diffuse staining pattern of the Golgi zone in normal and malignant cells This monoclonal antibody is an excellent marker for human cells in xenographic model research It reacts specifically with human cells
Immunogen	Recombinant full-length human Golgi Glycoprotein 1/GLG1 protein
Product Application Details	
Applications	Immunohistochemistry-Frozen, Immunohistochemistry-Paraffin
Recommended Dilutions	Immunohistochemistry-Paraffin 0.5-1 ug/ml, Immunohistochemistry-Frozen 0.5-1 ug/ml
Application Notes	Immunohistochemistry (Frozen & Formalin-fixed): 0.5-1ug/ml for 30 minutes. at RT. No special pretreatment is required for the immunohistochemical staining of formalin-fixed tissues. Optimal dilution for a specific application should be determined.

Images

Formalin-fixed, paraffin-embedded human colon stained with Golgi Glycoprotein 1/GLG1 antibody (GLG1/4830).





Novus Biologicals USA

10730 E. Briarwood Avenue
Centennial, CO 80112
USA
Phone: 303.730.1950
Toll Free: 1.888.506.6887
Fax: 303.730.1966
nb-customerservice@bio-techne.com

Bio-Techne Canada

21 Canmotor Ave
Toronto, ON M8Z 4E6
Canada
Phone: 905.827.6400
Toll Free: 855.668.8722
Fax: 905.827.6402
canada.inquires@bio-techne.com

Bio-Techne Ltd

19 Barton Lane
Abingdon Science Park
Abingdon, OX14 3NB, United Kingdom
Phone: (44) (0) 1235 529449
Free Phone: 0800 37 34 15
Fax: (44) (0) 1235 533420
info.EMEA@bio-techne.com

General Contact Information

www.novusbio.com
Technical Support: nb-technical@bio-techne.com
Orders: nb-customerservice@bio-techne.com
General: novus@novusbio.com

Products Related to NBP3-20872

HAF007	Goat anti-Mouse IgG Secondary Antibody [HRP]
NB720-B	Rabbit anti-Mouse IgG (H+L) Secondary Antibody [Biotin]
NBP1-43317-0.5mg	Mouse IgG2b Kappa Light Chain Isotype Control (MG2b)
NBP1-90636PEP	Golgi Glycoprotein 1/GLG1 Recombinant Protein Antigen

Limitations

This product is for research use only and is not approved for use in humans or in clinical diagnosis. Primary Antibodies are guaranteed for 1 year from date of receipt.

For more information on our 100% guarantee, please visit www.novusbio.com/guarantee

Earn gift cards/discounts by submitting a review: www.novusbio.com/reviews/submit/NBP3-20872

Earn gift cards/discounts by submitting a publication using this product:
www.novusbio.com/publications

